



# Annual Report

## 2006

---

# Annual Report 2006

---

---

**Published by**  
The Australian National University

**Produced by**  
Marketing and Communications Division  
The Australian National University

**Printed by**  
University Printing Service  
The Australian National University  
ISSN 1327-7227

April 2007

---

---

## **FURTHER INFORMATION ABOUT ANU**

Detailed information about ANU is available from the University's website:  
[www.anu.edu.au](http://www.anu.edu.au)

For course and other academic information, contact:

Registrar  
The Australian National University  
Canberra ACT 0200  
T: +61 2 6125 3339 F: +61 2 6125 0751

For general information, contact:

Director  
Marketing and Communications Division  
The Australian National University  
Canberra ACT 0200  
T: +61 2 6125 2229 F: +61 2 6125 5568

---

---

# CONTENTS

---

<i>ANU by 2010</i>	6
Implementing the ANU College structure	6
Australia's highest ranked university and among the world's best	7
A local, national and global participant	8
Sources of income	10
Research	11
Education	14
Governance and Freedom of Information	19
Academic structure	21
Organisational chart	22
Access	25
Risk management	27
A safe and healthy place	28
The environment	29
Infrastructure	31
The Council and University Officers	32
Council and Council Committees	39
Auditor-General's Report	41
Statement by Directors	43
Financial Statements	44
Glossary	94

DR ALLAN HAWKE  
Chancellor

Canberra ACT 0200 Australia  
T: +61 2 6125 2113  
F: +61 2 6125 8524  
E: [Chancellor@anu.edu.au](mailto:Chancellor@anu.edu.au)  
[www.anu.edu.au](http://www.anu.edu.au)

5 April 2007

The Hon Julie Bishop MP  
Minister for Education, Science and Training  
Parliament House  
CANBERRA ACT 2600

Dear Minister,

**Report of the Council for the period 1 January 2006 to 31 December 2006**

We have the honour to transmit the report of the Council of The Australian National University for the period 1 January 2006 to 31 December 2006 furnished in compliance with Section 9 of the *Commonwealth Authorities and Companies Act 1997*.



**Allan Hawke**  
Chancellor



**Ian Chubb AC**  
Vice-Chancellor

## ANU BY 2010

In July 2006, the University Council endorsed *ANU by 2010*, the University's strategic plan. It is not a traditional plan but rather about people, values and aspirations.

---

*The reputation of a university depends not on the number of its students or the splendour of its buildings, but on the quality of its members and the nature of its contribution to learning.<sup>1</sup>*

---

*ANU by 2010* is written to influence all that ANU does, and to describe what ANU will be in 2010 and beyond. Delivery on the aspirations is the matter of the ANU College plans.

## IMPLEMENTING THE ANU COLLEGE STRUCTURE

The University Council approved an Operational Improvements Plan in June 2005, which included structural reforms and in particular an academic structure around seven ANU Colleges.

From 1 January 2006, the ANU Colleges were formally constituted and began operation. The principal role of the Colleges is to coordinate the academic work of ANU within disciplines and areas of research and education. Across the University, 2006 was a year of transition to the College structure. The College Convener assumed responsibility for overall planning within each College, and the Dean of the College assumed responsibility for all educational matters. The College Advisory Board (or in some cases, College Forum) became the principal reference bodies for advising the College executive on strategic matters. Changes to University rules and delegations were made to reflect the College structure, and accreditation and administrative systems established. By the end of 2006 a number of academic initiatives were underway as a result of College-wide planning processes: College research projects; new degree programs, in some cases developed in conjunction with partners from industry and government; and some significant infrastructure development taking College needs into account.

<sup>1</sup> J.J. Dedman, Second reading Speech, Hansard vol 187, p1567

# AUSTRALIA'S HIGHEST RANKED UNIVERSITY & AMONG THE WORLD'S BEST

ANU is an education-intensive research institute of international distinction, established by an Act of the Parliament of the Commonwealth of Australia.

ANU is consistently ranked as Australia's top university and among the leading universities in the world.

## World Rankings

The merits of particular university rankings continue to be debated and it is doubtful that there are any that are not seriously flawed. Positions in rankings provide, however, some indication of relative performance. ANU performed very well on a broad range of measures and continues to be among the best in world rankings.

Table 1: World Rankings in 2006

Academic Ranking of World Universities, Institute of Higher Education, Shanghai Jiao Tong University	54
<i>The Times Higher Education Supplement</i>	16
<i>Newsweek International</i>	38

Within the *Times Higher Education Supplement* ranking, ANU also fared well in constituent discipline rankings of the world's top universities:

Social Sciences	6
Arts and Humanities	6
Science	16
Technology	24
Biomedicine	24

## Learning & Teaching Performance Fund

Education endeavours at ANU were recognised during 2006 in the Australian Government's Learning and Teaching Performance Fund for 2007. ANU was the only university to achieve in the top performance band for every discipline group for which it was eligible, and it achieved the highest score for discipline group 1 (which includes Science, Computing and Engineering). As a result, ANU will receive \$3.967m from the Learning and Teaching Performance Fund Allocations for 2007.

Further national recognition came through ANU receiving five of the 33 national awards from the Carrick Institute for Teaching and Learning in Higher Education.

## Webometrics

In July 2006, ANU was the highest ranked Australian university and ranked fifty-fifth in the world by Webometrics. The Webometrics rankings are designed as indicators of commitment to web publishing and to open access principles.



## A LOCAL, NATIONAL & GLOBAL PARTICIPANT

ANU and its staff contribute to our local, national and international communities by extending knowledge and intellectual and scholarly resources. Members of ANU contribute their expertise to debates on areas and issues of significance to Australia and the world, and are regularly sought out by the media, government, business and community groups for comment, expert analysis, advice and research on matters of international, national and local importance. ANU researchers feature daily in the media.

Researchers and other academic staff are called upon to provide advice to different levels of government, and regularly serve on government review committees, tribunals, councils and advisory groups. Examples include: Ministerial Council on Aboriginal and Torres Strait Islander Affairs; Prime Minister's Science, Engineering and Innovation Council; AusAID; Department of Environment and Heritage; Department of Agriculture, Fisheries and Forestry; the Productivity Commission; the Reserve Bank of Australia; Australian Bureau of Statistics; Australian Government's Ministerial Advisory Group on AIDS, Sexual Health and Hepatitis; Family and Community Services; Australian Health Information Committee; Department of Health and Ageing; the National Community and Expert Advisory Forum on Suicide Prevention; and the Bureau of Meteorology. The University also provides a number of tailored programs to meet the needs of government, including executive programs for senior government officials. Many ANU researchers are also involved in the work of international bodies such as the United Nations, the World Bank, World Vision, and the United Nations Educational, Scientific and Cultural Organisation (UNESCO).

By engaging with our communities through outreach programs, ANU staff and students contribute to intellectual understanding, social debate and cultural enrichment. Examples include the following:

- Seventy-three public lectures were presented in 2006 to a total audience of more than 10,000 and podcasts of a number of major lectures were made available to make the presentations more accessible to a broader audience.
- Speakers of international significance included Jose Ramos Horta, Prime Minister of East Timor, and Jan Balkenende, Prime Minister of the Netherlands.
- A public symposium was held in collaboration with the National Museum of Australia, *Discovering Cook's Collections*.
- The Australian Dictionary of Biography (ADB) Online was launched, containing over 10,000 scholarly biographical articles on 11,237 individuals who were significant in Australian history, as a free resource. The ADB Online won the Manning Clark National Cultural Award.
- ANU contributed to the *Great Wall of China* exhibition at the Powerhouse Museum, Sydney, in collaboration with the National Museum of China.
- The Shell Questacon Science Circus, a partnership between ANU, Shell Companies in Australia and Questacon - The National Science and Technology Centre, celebrated 21 years. The Science Circus also won a Prime Minister's Award for Excellence in Business/Community Partnerships.
- ANU participated in a number of initiatives to bring the excitement of science, technology and engineering to the next generation, including Science Week, the Amazing World of Science, Archimedes Days, Australian Science Olympiads, ANU Kioloa Open Week, the National Maths Summer School and the National Youth Science Forum.
- The ANU Secondary College program commenced for Year 11 students in Chemistry, Mathematics and Physics.

In the international sphere, examples of ANU activities include the following:

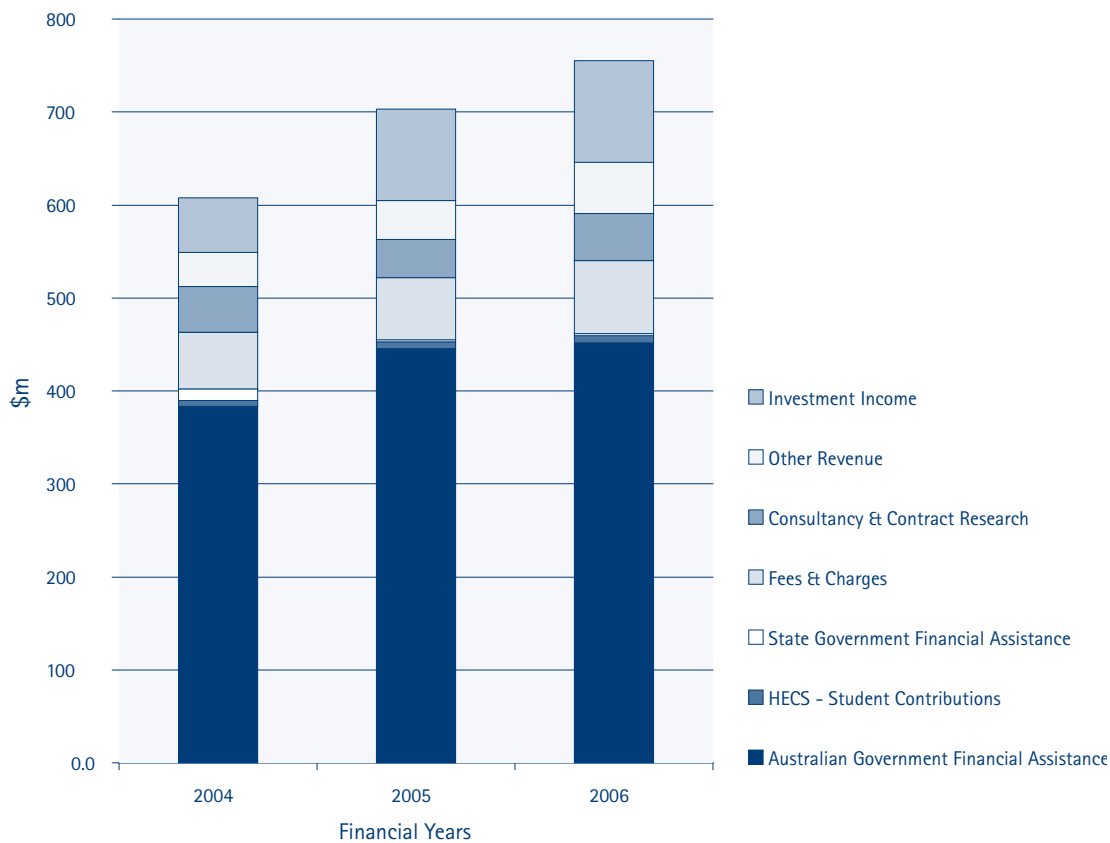
- The international body for world music moved to ANU after being based in the US for 25 years. The International Council for Traditional Music secretariat will be based at the ANU School of Music for the next three years.
- The Australian Network for Japanese Law team (made up of students from ANU and the University of Sydney) won the 2006 Japanese Intercollegiate Arbitration and Negotiation Competition against the top 15 Japanese universities, in Japan.
- The annual *International New Glass Review* highlights the 100 most significant works in contemporary art glass around the world. Issue number 27 in 2006 features nine graduates and staff of the Glass Workshop at the ANU School of Art.
- The *International Philosophical Gourmet Guide* once again assessed the University's Philosophy program as being one of the very best in the world.
- The ANU College of Asia and the Pacific undertook annual updates for China, Indonesia, India, Korea, Thailand, Vietnam, Pacific Islands and Myanmar (held in Singapore in conjunction with the Institute of South East Asian Studies).
- The ANU National Europe Centre won a competitive grant of €1m from the European Union to continue to foster dialogue and research between Australia and Europe.
- The ANU College of Law was re-invited to be the only Australian law school to nominate interns for the International Court of Justice.
- As a member of the International Alliance of Research Universities (IARU), ANU is contributing to the framework for research of global issues under the theme of 'Global Change', exploring four key topics – security; energy, resources and environment; health and longevity; and movement of people.
- An ANU office was established at Yale University in the US in 2006, with functions including: fund-raising and development in North America; building stronger alumni relations; fostering closer relations in education and research with IARU partners Yale and University of California, Berkeley; representing ANU in the Americas and in Europe; and supporting the work of ANU Enterprise in North America.

## SOURCES OF INCOME

The University's operating income on a consolidated basis has grown from \$703m in 2005 to \$755m in 2006, an increase of some seven per cent. The net operating result for 2006 was \$101m, (excluding a Commonwealth capital grant of \$125m) up from \$47m in 2005.

Figure 1 shows the distribution of, and changes to, sources of the University's income.

Figure 1: Sources of Income<sup>2</sup>



<sup>2</sup> Source: Consolidated figures from the Income Statement

# AN EDUCATION-INTENSIVE RESEARCH INSTITUTE

ANU is a centre of research excellence.

## PERFORMANCE MEASURES

- In the Australian Research Council (ARC) funding round, ANU won more than \$40 million for 100 new Discovery Projects, 13 Linkage Projects, and four Linkage Infrastructure, Equipment and Facilities Proposals. The funding will support a diverse range of research projects, looking at subjects such as sustainable farming, HIV/AIDs prevention and the prevention of environmental degradation.
- The University was also awarded more than \$13.5 million from the National Health and Medical Research Council, which will support research into mental health, cancer treatment, and malaria.
- The ACT has the highest percentage expenditure on research and experimental development (61.5 per cent), and highest dollar expenditure per academic FTE (\$235,000), in a State/Territory ranking. ANU expenditure is 69.3 per cent and \$305,000 respectively<sup>3</sup>.
- Benchmarked against the Group of Eight, ANU has the:
  - highest percentage of academic staff affiliated with the Royal Society and Australian Academies<sup>4</sup>
  - highest percentage of academic staff with ARC Fellowships<sup>5</sup>
  - highest number of new ARC Discovery Grants per academic FTE and highest dollar value of new grants per academic FTE<sup>6</sup>
  - fourth highest number of new ARC Linkage Grants per academic FTE and fourth highest dollar value of new grants per academic FTE<sup>7</sup>
  - highest percentage of academic staff holding doctorates<sup>8</sup>.

<sup>3</sup> Based on data for 2004 which are the latest data available. No data collection occurred in 2005 as the collection is based on a biennial survey. The data for 2004 is available from the ABS in state/territory groups rather than by individual higher education providers. Source: DEST Finance data, [www.dest.gov.au/NR/rdonlyres/FC5576B6-C249-4C16-BE17-91199CF47845/9697/finance\\_2004.pdf](http://www.dest.gov.au/NR/rdonlyres/FC5576B6-C249-4C16-BE17-91199CF47845/9697/finance_2004.pdf), DEST Research Expenditure data [www.ausstats.abs.gov.au/ausstats/subscriber.nsf/0/3FFCAB7F97F450A0CA2571B7007E4F78/\\$File/81110\\_2004%20\(reissue\).pdf](http://www.ausstats.abs.gov.au/ausstats/subscriber.nsf/0/3FFCAB7F97F450A0CA2571B7007E4F78/$File/81110_2004%20(reissue).pdf), DEST Staff data [http://www.dest.gov.au/NR/rdonlyres/EC48C875-7617-4817-8849-BAEE97664471/2457/2004\\_staff.xls](http://www.dest.gov.au/NR/rdonlyres/EC48C875-7617-4817-8849-BAEE97664471/2457/2004_staff.xls)

<sup>4</sup> Sources: Royal Society Fellowship at June 2006, [www.royalsoc.ac.uk/page.asp?id=2215](http://www.royalsoc.ac.uk/page.asp?id=2215)  
Australian Academy of Science Fellowship at June 2006, [www.science.org.au/academy/fellows/fellow.htm](http://www.science.org.au/academy/fellows/fellow.htm)  
Australian Academy of Technology Sciences and Engineering Fellowship at June 2006, [www.atse.org.au](http://www.atse.org.au)  
Australian Academy of Social Sciences Fellowship at June 2006, [www.assa.edu.au/directory/](http://www.assa.edu.au/directory/)  
Australian academy of Humanities Fellowship at June 2006, [www.humanities.org.au/Fellows/Overview.htm](http://www.humanities.org.au/Fellows/Overview.htm)  
DEST Staff data, data for 2006 based on 2005 [www.dest.gov.au/sectors/higher\\_education/publications\\_resources/statistics/publications\\_higher\\_education\\_statistics\\_collections.htm#staffpubs](http://www.dest.gov.au/sectors/higher_education/publications_resources/statistics/publications_higher_education_statistics_collections.htm#staffpubs) (Table 7)

<sup>5</sup> ARC Fellowships data: Federation Fellowships, [www.arc.gov.au/funded\\_grants/selection\\_discovery\\_fellow.htm](http://www.arc.gov.au/funded_grants/selection_discovery_fellow.htm)  
Discovery Projects Fellowships [www.arc.gov.au/funded\\_grants/selection\\_discovery\\_projects.htm](http://www.arc.gov.au/funded_grants/selection_discovery_projects.htm)  
DEST Staff data, data for 2006 based on FTE for 2005, [www.dest.gov.au/sectors/higher\\_education/publications\\_resources/statistics/publications\\_higher\\_education\\_statistics\\_collections.htm#staffpubs](http://www.dest.gov.au/sectors/higher_education/publications_resources/statistics/publications_higher_education_statistics_collections.htm#staffpubs)  
FTE for Full-time and Fractional Full-time Staff by State, Institution, Current Duties Classification and Gender for 2003 (Table 7) and 2004 (Table 7). FTE for Full-time and Fractional Full-time Staff by State, Higher Education Provider, Current Duties Classification and Gender for 2005 (Table 7)

<sup>6</sup> Sources: ARC Discovery Grants data, [www.arc.gov.au/funded\\_grants/selection\\_discovery.htm](http://www.arc.gov.au/funded_grants/selection_discovery.htm)  
DEST Staff data, [www.dest.gov.au/sectors/higher\\_education/publications\\_resources/statistics/publications\\_higher\\_education\\_statistics\\_collections.htm#staffpubs](http://www.dest.gov.au/sectors/higher_education/publications_resources/statistics/publications_higher_education_statistics_collections.htm#staffpubs)

<sup>7</sup> Sources: ARC Linkage Projects data, [www.arc.gov.au/funded\\_grants/selection\\_linkage\\_projects.htm](http://www.arc.gov.au/funded_grants/selection_linkage_projects.htm)  
DEST Staff data, [http://www.dest.gov.au/sectors/higher\\_education/publications\\_resources/statistics/publications\\_higher\\_education\\_statistics\\_collections.htm#staffpubs](http://www.dest.gov.au/sectors/higher_education/publications_resources/statistics/publications_higher_education_statistics_collections.htm#staffpubs)

<sup>8</sup> Based on 2005 data. DEST Staff data, [http://www.dest.gov.au/sectors/higher\\_education/publications\\_resources/statistics/publications\\_higher\\_education\\_statistics\\_collections.htm#staffpubs](http://www.dest.gov.au/sectors/higher_education/publications_resources/statistics/publications_higher_education_statistics_collections.htm#staffpubs)

Table 2: Research Grants & Publications<sup>9</sup> (latest available data)

Research Grants (\$'000)	2003	2004	2005
Australian Competitive Research Grants	55,635	63,832	76,347
Other Public Sector Research Funding	14,470	15,671	16,007
Industry and Other Funding for Research	24,954	19,902	17,880
CRC Funding	4,036	4,034	3,327
<b>TOTAL RESEARCH GRANTS</b>	<b>99,096</b>	<b>103,439</b>	<b>113,560</b>
<b>Research Publications (rounded)</b>			
Books	65	70	68
Book Chapters	371	436	560
Journal Articles	1,390	1,583	1,632
Conference Papers	253	328	371
<b>UNWEIGHTED TOTAL</b>	<b>2,080</b>	<b>2,416</b>	<b>2,631</b>
<b>WEIGHTED TOTAL<sup>10</sup></b>	<b>2,340</b>	<b>2,697</b>	<b>2,904</b>

Table 3: Summary of Research Activity<sup>11</sup>

Research Grants	2004 (\$)	2005 (\$)	2006 (\$)
LIEF/SII/MNRF	7,902,000	12,959,013	13,632,659
ARC	45,116,475	54,022,759	62,207,564
NHMRC	12,151,628	14,235,881	13,978,055
Other	46,171,043	45,301,431	37,145,247
<b>Total</b>	<b>111,341,146</b>	<b>126,519,084</b>	<b>126,963,525</b>

LIEF – Linkage Infrastructure, Equipment and Facilities (ARC Funding); SII – Systemic Infrastructure Initiative (DEST Research Grant); MNRF – Major National Research Facilities; ARC – Australian Research Council; NHMRC – National Health and Medical Research Council.

Staff	2004	2005	2006
ARC Grants and Fellowships	466	484	577
NHMRC Grants and Fellowships	97	101	83
Total Academic Staff (FTE)	1,354	1,441	1,444
Staff: FTE, Level C+	754	769	786
ARC & NHMRC Grants/Staff (FTE, Level C+)	0.75	0.76	0.85
Publications index - value (Previous Year)	2,340	2,695	2,904

<sup>9</sup> Source: ANU return to DEST Higher Education Research Data Collection

<sup>10</sup> Books are weighted as five and other categories as one

<sup>11</sup> 2004 data have been updated. 2005 provisional data have been updated to final data. 2006 data based on 2006 projections as at 16 November 2006. Staff numbers based on DEST 31 March submissions.

Table 4: Research Grants by Academic Unit for 2006<sup>12</sup>

Academic Unit	ARC (\$)	NHMRC (\$)	Other (\$)	TOTAL (\$)
Faculty of Arts	1,946,678	0	1,863,170	3,809,848
Centre for Aboriginal Economic Policy Research	325,625	119,738	576,139	1,021,502
Centre for Cross - Cultural Research	645,184	0	27,250	672,434
Centre for Educational Development & Academic Methods	36,816	0	122,000	158,816
Humanities Research Centre	437,889	0	265,000	702,889
Research School of Social Sciences	5,592,319	87,250	2,013,751	7,693,320
<b>ANU College of Arts and Social Sciences Total</b>	<b>8,984,511</b>	<b>206,988</b>	<b>4,867,310</b>	<b>14,058,809</b>
Asia-Pacific College of Diplomacy	20,000	0	0	20,000
Faculty of Asian Studies	628,447	0	123,358	751,805
Crawford School of Economics & Government	328,945	0	3,056,544	3,385,489
Research School of Pacific & Asian Studies	3,720,823	0	3,322,116	7,042,939
<b>ANU College of Asia and the Pacific Total</b>	<b>4,698,215</b>	<b>0</b>	<b>6,502,018</b>	<b>11,200,233</b>
ANU College of Business & Economics	742,480	0	160,998	903,478
<b>ANU College of Business and Economics Total</b>	<b>742,480</b>	<b>0</b>	<b>160,998</b>	<b>903,478</b>
Faculty of Engineering & Information Technology	2,395,394	0	785,520	3,180,914
Research School of Information Sciences & Engineering	845,736	0	50,000	895,736
<b>ANU College of Engineering and Computer Science Total</b>	<b>3,241,130</b>	<b>0</b>	<b>835,520</b>	<b>4,076,650</b>
ANU College of Law	321,000	0	152,950	473,950
<b>ANU College of Law Total</b>	<b>321,000</b>	<b>0</b>	<b>152,950</b>	<b>473,950</b>
Australian Centre for Economic Research on Health	184,000	1,134,550	19,587	1,338,137
ANU Medical School	0	920,314	2,210,164	3,130,478
Australian Primary Health Care Research Institute	0	20,484	4,520,000	4,540,484
Centre for Mental Health Research	177,000	1,317,145	495,045	1,989,190
The John Curtin School of Medical Research	3,763,781	6,913,072	2,452,782	13,129,635
National Centre for Epidemiology & Population Health	366,179	1,818,291	2,906,460	5,090,930
<b>ANU College of Medicine and Health Sciences Total</b>	<b>4,490,960</b>	<b>12,123,856</b>	<b>12,604,038</b>	<b>29,218,854</b>
Centre for Resource & Environmental Studies	899,142	390,579	1,826,022	3,115,743
Mathematical Sciences Institute	2,119,653	0	45,000	2,164,653
Research School of Astronomy & Astrophysics	1,931,585	0	356,106	2,287,691
Research School of Biological Sciences	4,197,310	562,744	2,872,774	7,632,828
Research School of Chemistry	4,064,980	160,000	467,279	4,692,259
Research School of Earth Sciences	4,468,775	0	627,563	5,096,338
Research School of Physical Sciences & Engineering	13,358,984	74,700	1,971,129	15,404,813
Faculty of Science	8,688,839	849,767	3,465,961	13,004,567
<b>ANU College of Science Total</b>	<b>39,729,268</b>	<b>2,037,790</b>	<b>11,631,834</b>	<b>53,398,892</b>
<b>TOTALS</b>	<b>62,207,564</b>	<b>14,368,634</b>	<b>36,754,668</b>	<b>113,330,866</b>

<sup>12</sup> Based on 2006 projections as at 16 November 2006

# AN EDUCATION-INTENSIVE RESEARCH INSTITUTE

ANU performance in the Australian Government's 2006 and 2007 Learning and Teaching Performance Fund, together with other measures, disproves the notion that excellence in research and exceptional teaching are mutually exclusive.

## PERFORMANCE MEASURES

- ANU was recognised in the Australian Government's Learning and Teaching Performance Fund, being rated in the top performance band for every discipline group for which it was eligible, and achieved the highest score for discipline group 1 (Science, Computing, Engineering, Architecture and Agriculture).
- ANU continues to be sought after by undergraduate students at the top end of the UAI scale. The median entry UAI score for 2006 fell slightly from 2005, but at 92.80 remained one of Australia's highest.
- Teaching at ANU was recognised through five Carrick Awards – three individual awards and two team awards.
- Of the student load almost one third is at postgraduate level and of those, almost half are undertaking study towards a PhD.
- ANU has the highest proportion of Higher Degree Research student load amongst the Group of Eight<sup>13</sup>.
- Of the total student load, international students represented 24 per cent.

Table 5: EFTSL by Program

Program		2004 <sup>14</sup>	2005 <sup>15</sup>	2006 <sup>16</sup>
Higher Degree Research	Domestic	1,184	1,207	1,200
	International	437	469	458
<b>Higher Degree Research Total</b>		<b>1,621</b>	<b>1,676</b>	<b>1,657</b>
Postgraduate Coursework	Domestic	952	961	964
	International	796	733	825
<b>Postgraduate Coursework Total</b>		<b>1,748</b>	<b>1,694</b>	<b>1,789</b>
Undergraduate	Domestic	6,375	6,210	6,018
	International	1,114	1,183	1,197
<b>Undergraduate Total</b>		<b>7,490</b>	<b>7,393</b>	<b>7,215</b>
Non-award	Domestic	36	23	33
	International	156	94	169
<b>Non-award Total</b>		<b>192</b>	<b>117</b>	<b>202</b>
<b>TOTALS</b>		<b>11,051</b>	<b>10,879</b>	<b>10,863</b>

<sup>13</sup> 2005 data. DEST student data source, [www.dest.gov.au/highered/statpubs.htm](http://www.dest.gov.au/highered/statpubs.htm)

<sup>14</sup> From 2005, full-year figures are reported on a calendar year basis. Pre 2005 figures are reported for the September–August period.

<sup>15</sup> Provisional data for 2005 have been updated with final figures (rounded) for 2005.

<sup>16</sup> 2006 based on provisional data submissions to DEST as at 14 November 2006 and, while provisional, use the September–August reporting period.

Table 6: Median Entry Scores

	2004	2005	2006
Median Entry UAI Score	90.49	93.15	92.80

Table 7: Undergraduate Operating Grant Load Against Government Targets

	2004	2005 <sup>17</sup>	2006 <sup>18</sup>
Actual Load	6,375	6,210	6,018
DEST Target	6,030	6,117	6,193
Over/(Under) Enrolment	5.7%	1.5%	(2.8%)

Table 8: Higher Degree & Postgraduate Student Enrolments<sup>19</sup>

2003					
Program Type	Female	Male	Total	% Female	% Male
Doctorate by Research	700	889	1,589	44.1%	55.9%
Masters by Research	39	69	108	36.1%	63.9%
Higher Degree Coursework	778	1,002	1,780	43.7%	56.3%
Other Postgraduate	662	571	1,233	53.7%	46.3%
<b>Total</b>	<b>2,179</b>	<b>2,531</b>	<b>4,710</b>	<b>46.3%</b>	<b>53.7%</b>
2004					
Program Type	Female	Male	Total	% Female	% Male
Doctorate by Research	837	1,047	1,884	44.4%	55.6%
Masters by Research	54	72	126	42.9%	57.1%
Higher Degree Coursework	944	1,245	2,189	43.1%	56.9%
Other Postgraduate	732	647	1,379	53.1%	46.9%
<b>Total</b>	<b>2,567</b>	<b>3,011</b>	<b>5,578</b>	<b>46.0%</b>	<b>54.0%</b>
2005 <sup>20</sup>					
Program Type	Female	Male	Total	% Female	% Male
Doctorate by Research	894	1,097	1,991	44.9%	55.1%
Masters by Research	53	78	131	40.5%	59.5%
Higher Degree Coursework	1,030	1,185	2,215	46.5%	53.5%
Other Postgraduate	621	489	1,110	55.9%	44.1%
<b>Total</b>	<b>2,598</b>	<b>2,849</b>	<b>5,447</b>	<b>47.7%</b>	<b>52.3%</b>

<sup>17</sup> The provisional 2005 data have been updated to final data.

<sup>18</sup> Based on provisional data.

<sup>19</sup> Student count by program type as at 31 March. Students enrolled in two programs within program type are counted only once.

<sup>20</sup> The 2005 provisional data have been updated to final data. 2006 data will not be available until mid 2007.



Table 9: Research & Education Activity by Academic Area 2006

Academic Unit/College	FTE <sup>21</sup>			EFTSL <sup>22</sup>					
	Total Staff	Academic Staff	General Staff	Total Student	Higher Degree Research	Higher Degree Course work	Other Post-graduate	Under-graduate	Non-award
Faculty of Arts	256	185	70	2,493	250	83	38	2,107	15
Centre for Aboriginal Economic Policy Research	17	11	6	6	6				
Centre for Educational Development & Academic Methods	4	4		14	4	2	8		
Research School of Humanities	35	20	15	43	39	1	3		
Research School of Social Sciences	154	89	65	116	104	9	2		1
<b>ANU College of Arts &amp; Social Sciences Total</b>	<b>466</b>	<b>309</b>	<b>157</b>	<b>2,672</b>	<b>403</b>	<b>95</b>	<b>51</b>	<b>2,107</b>	<b>17</b>
Asia-Pacific College of Diplomacy	3	2	1	17		17			
Faculty of Asian Studies	38	31	7	501	40	16	1	439	5
Crawford School of Economics & Government	58	20	38	395	65	189	81		59
International Centre of Excellence in Asia-Pacific Studies	4	1	3						
Research School of Pacific & Asian Studies	200	101	100	376	190	129	40		17
<b>ANU College of Asia &amp; the Pacific Total</b>	<b>304</b>	<b>155</b>	<b>149</b>	<b>1,288</b>	<b>295</b>	<b>351</b>	<b>122</b>	<b>439</b>	<b>82</b>
ANU College of Business & Economics	153	106	47	2,437	98	489	38	1,718	93
<b>ANU College of Business &amp; Economics Total</b>	<b>153</b>	<b>106</b>	<b>47</b>	<b>2,437</b>	<b>98</b>	<b>489</b>	<b>38</b>	<b>1,718</b>	<b>93</b>
Faculty of Engineering & Information Technology	85	49	36	679	64	83	7	526	1
Research School of Information Sciences & Engineering	50	28	23	72	72				
<b>ANU College of Engineering &amp; Computer Science Total</b>	<b>135</b>	<b>76</b>	<b>59</b>	<b>751</b>	<b>136</b>	<b>83</b>	<b>7</b>	<b>526</b>	<b>1</b>
ANU College of Law	83	49	34	1,231	22	123	331	752	3
<b>ANU College of Law Total</b>	<b>83</b>	<b>49</b>	<b>34</b>	<b>1,231</b>	<b>22</b>	<b>123</b>	<b>331</b>	<b>752</b>	<b>3</b>
Australian Centre for Economic Research on Health				2	2				
ANU Medical School	49	23	26	258	7			252	

<sup>21</sup> Based on DEST 31 March 2006 submissions (provisional). All figures have been rounded.

<sup>22</sup> The official DEST reporting period is 1 January - 31 December. However the above EFTSL figures are for 1 September 2005 - 30 August 2006 and are provided to give an early indication of 2006 data based on official submissions. The 1 September - 31 December 2006 information is due to be submitted to DEST on 31 March 2007. Note: All figures have been rounded.

Table 9: Research & Education Activity by Academic Area 2006 (continued)

	FTE			EFTSL					
	Total Staff	Academic Staff	General Staff	Total Student	Higher Degree Research	Higher Degree Course work	Other Post-graduate	Under-graduate	Non-award
<b>Academic Unit/College</b>									
Australian Primary Health Care Research Institute	6	3	3	2	2				
Centre for Mental Health Research	27	9	18	10	10				
The John Curtin School of Medical Research	286	91	195	70	70				
National Centre for Epidemiology & Population Health	57	35	21	40	23	18			
<b>ANU College of Medicine &amp; Health Sciences Total</b>	<b>425</b>	<b>161</b>	<b>264</b>	<b>383</b>	<b>114</b>	<b>18</b>		<b>252</b>	
Centre for Resource & Environmental Studies	38	19	19	43	43				
Mathematical Sciences Institute	32	27	5	19	19				
Research School of Astronomy & Astrophysics	73	27	46	32	32				
Research School of Biological Sciences	186	86	100	65	65				
Research School of Chemistry	129	61	69	60	60				
Research School of Earth Sciences	119	55	64	41	41				
Research School of Physical Sciences & Engineering	235	137	98	87	87				
Faculty of Science	260	162	98	1,728	244	51	32	1,398	4
<b>ANU College of Science Total</b>	<b>1,072</b>	<b>574</b>	<b>499</b>	<b>2,075</b>	<b>590</b>	<b>51</b>	<b>32</b>	<b>1,398</b>	<b>4</b>
Other units including APAC, NCIS	879	13	865						
Australian National Internships Program	2	1	1	27				24	3
<b>TOTALS</b>	<b>3,519</b>	<b>1,444</b>	<b>2,075</b>	<b>10,863</b>	<b>1,657</b>	<b>1,209</b>	<b>580</b>	<b>7,215</b>	<b>202</b>

Table 10: Research & Education Activity by Academic Area 2006

	FTE <sup>23</sup>			EFTSL <sup>24</sup>					
	Total Staff	Academic Staff	General Staff	Total Student	Higher Degree Research	Higher Degree Course work	Other Post-graduate	Under-graduate	Non-award
<b>Academic Area</b>									
Institute of Advanced Studies	1,507	712	794	1,005	802	139	46		18
Faculties	923	605	318	9,135	717	669	442	7,191	117
Centres	180	84	96	663	115	399	85		64
Other Units (including ANIP, APAC, APDC, APHCRI, CEDAM, MSI, NCIS)	909	42	867	60	23	3	8	24	3
<b>TOTALS</b>	<b>3,519</b>	<b>1,444</b>	<b>2,075</b>	<b>10,863</b>	<b>1,657</b>	<b>1,209</b>	<b>580</b>	<b>7,215</b>	<b>202</b>

<sup>23</sup> Based on DEST 31 March 2006 submissions (provisional). All figures have been rounded.

<sup>24</sup> The official DEST reporting period is 1 January - 31 December. However the above EFTSL figures are for 1 September 2005 - 30 August 2006 and are provided to give an early indication of 2006 data based on official submissions. The 1 September - 31 December 2006 information is due to be submitted to DEST on 31 March 2007. Note: All figures have been rounded.

Table 11: Summary of Learning & Teaching Performance Fund Adjusted Percentages for 2007

Adjusted Percentages for 2007								
Discipline Group								
	1		2		3		4	
	Science, Computing, Engineering, Architecture & Agriculture		Business, Law & Economics		Humanities, Arts & Education		Health	
Performance Indicator	ANU	Sector	ANU	Sector	ANU	Sector	ANU	Sector
<b>Student Satisfaction</b>								
Satisfaction with generic skills	82.67	73.97	70.99	71.48	70.68	72.09	79.12	70.81
Satisfaction with good teaching	54.20	47.54	39.14	40.73	56.99	56.39	27.76	47.07
Overall satisfaction	79.97	69.49	72.29	68.93	76.29	71.03	74.10	67.35
<b>Outcomes</b>								
Full-time employment	81.19	76.36	82.88	80.05	67.50	71.72	100.00	91.87
Further full-time & part-time study	42.08	32.33	39.97	26.21	34.06	30.02	na	20.35
<b>Success<sup>25</sup></b>								
All Bachelor students' progress rates	86.07	80.74	85.87	81.92	90.11	85.37	99.34	89.95
Commencing Bachelor students' retention rate	85.03	81.77	89.13	82.08	89.48	80.35	95.18	85.71

<sup>25</sup> Uses 2005 Progress rates

# GOVERNANCE & FREEDOM OF INFORMATION

---

*This statement has been prepared to comply with sections 9, 15 and 16 of the Commonwealth Authorities and Companies (Report of Operations) Orders 2005 and section 8 of the Freedom of Information Act 1982 (Cth) not covered in other sections of this report.*

---

## 1. ORGANISATION & FUNCTIONS OF THE UNIVERSITY'S DECISION-MAKING COUNCIL & BOARD COUNCIL

In accordance with the *Australian National University Act 1991 (Cth)*, the Council is the governing authority of the University. The Act provides that the Council has the control and management of the University and is to act in all matters concerning the University in such manner as it thinks will best promote the interests of the University. The Council may enact delegated legislation, subject to the scrutiny of the Australian Parliament, known as Statutes, Rules and Orders.

The Council is chaired by the Chancellor and comprises 15 members: the Chancellor; the Vice-Chancellor; seven members appointed by the Minister on the recommendation of the Nominations Committee of Council; one person who is either a Dean or the Head of a Research School and is elected, in either case, by the Deans and the Heads of the Research Schools voting together; one member of the academic staff of the Institute of Advanced Studies elected by members of that staff; one member of the academic staff of The Faculties elected by members of that staff; one member of the general staff of the University elected by members of that staff; one postgraduate student of the University elected by the postgraduate students of the University; and one undergraduate student of the University elected by the undergraduate students of the University.

### COMMITTEES OF THE COUNCIL

Council is assisted in its functions by a number of committees:

- The Audit and Risk Management Committee advises the Council regarding the quality of the audits conducted and the adequacy of the University's administrative, operating and accounting controls and compliance with relevant legislation and policies; the Committee also oversees risk management planning and implementation within the University.
- The Finance Committee makes recommendations and decisions concerning financial and accounting matters of the University; a report from the Finance Committee is a standard item on the agenda for each meeting of Council.
- The Honorary Degrees Committee invites persons, within the terms of the Honorary Degrees Rules, to accept nomination for honorary degrees and recommends the names of those who accept nomination to the Council for admission.
- The Nominations Committee of Council makes recommendations to the Minister for Education, Science and Training on persons to be appointed to Council.
- The Committee on Conditions of Appointment of the Vice-Chancellor determines the conditions of appointment (including salary) of the Vice-Chancellor.
- The Emergency Appointment (Vice-Chancellor) Committee exercises in an emergency, the power of the Council to make acting appointments under sub-section 37 of the *Australian National University Act 1991 (Cth)* in relation to the office of Vice-Chancellor until the next meeting of the Council.

## GOVERNANCE

### Induction & professional development of Council members

Council members are provided with an induction program, the Handbook for Council Members and a program of professional development, including corporate governance training.

A session on building an effective Council and self-assessment of Council members was presented by the Australian Institute of Company Directors (AICD) on 24 February 2006. During 2006, a series of presentations was given to Council members on strategic issues including risk management, strategic planning, University financial reports and international student markets. The Chancellor also attended the 2006 National Conference on University Governance.

### Performance review of Council members

The University's enabling legislation specifies the duties of the members of the University Council<sup>26</sup> and the sanctions for the breach of those duties<sup>27</sup>. Council has the power to remove, by at least a two-thirds majority, a member who has breached his or her duties.

Council has resolved that it ensure continual assessment of performance and conformity with the National Governance Protocols for Higher Education Providers. A Council retreat was held on 24 February 2006 at which the AICD gave a session on building an effective Council, including evaluating Council/Director performance. A self-assessment questionnaire was distributed to Council members. Council reviewed its conformance with the Protocols on 28 July 2006.

### Identifying & managing business risk

This is set out in the Risk Management sections of this Annual Report.

### Establishment & maintenance of appropriate ethical standards

The University's Code of Conduct applies to all staff and to members of the University Council. It can be seen at [http://info.anu.edu.au/policies/Codes\\_Of\\_Practice/Human\\_Resources/Other/Code\\_of\\_Conduct.asp](http://info.anu.edu.au/policies/Codes_Of_Practice/Human_Resources/Other/Code_of_Conduct.asp). The University also has a number of Codes of Practice in place for teaching and learning, higher degree research supervision and academic honesty that apply to staff and students.

<sup>26</sup> See sections 18A, B, C, D, E, F of the ANU Act 1991 (Cth) and sections 22, 23, 24, 25, 26, 27A, 27B, 27C, 27D, 27F of *Commonwealth Authorities and Companies Act 1997 (Cth)*.

<sup>27</sup> See sub-section 15(1)(k) of the ANU Act 1991 (Cth) and sections 22, 23, 24, 25, 26, 27A, 27B, 27C, 27D, 27F of *Commonwealth Authorities and Companies Act 1997 (Cth)*.

# ACADEMIC STRUCTURE OF THE UNIVERSITY

ANU has seven Colleges, made up of a network of inter-related research and education Faculties, Research Schools and Centres,

## ANU College of Arts and Social Sciences

- Centre for Aboriginal Economic Policy Research
- Centre for Educational Development and Academic Methods (CEDAM)
- Faculty of Arts
- Research School of Social Sciences
- Research School of Humanities

## ANU College of Asia and the Pacific

- Asia Pacific College of Diplomacy
- Crawford School of Economics and Government
- Faculty of Asian Studies
- International Centre of Excellence in Asia Pacific Studies
- Research School of Pacific and Asian Studies

## ANU College of Business and Economics

- National Centre for Information Systems Research
- Australian National Centre for Audit and Assurance Research
- Australian Centre of Regulatory Economics
- National Graduate School of Management

## ANU College of Engineering and Computer Science

- Faculty of Engineering and Information Technology
- Research School of Information Sciences and Engineering

## ANU College of Law

## ANU College of Medicine and Health Sciences

- ANU Medical School
- The John Curtin School of Medical Research
- Australian Primary Health Care Research Institute
- Australian Centre for Economic Research on Health
- National Centre for Epidemiology and Population Health
- Centre for Mental Health Research

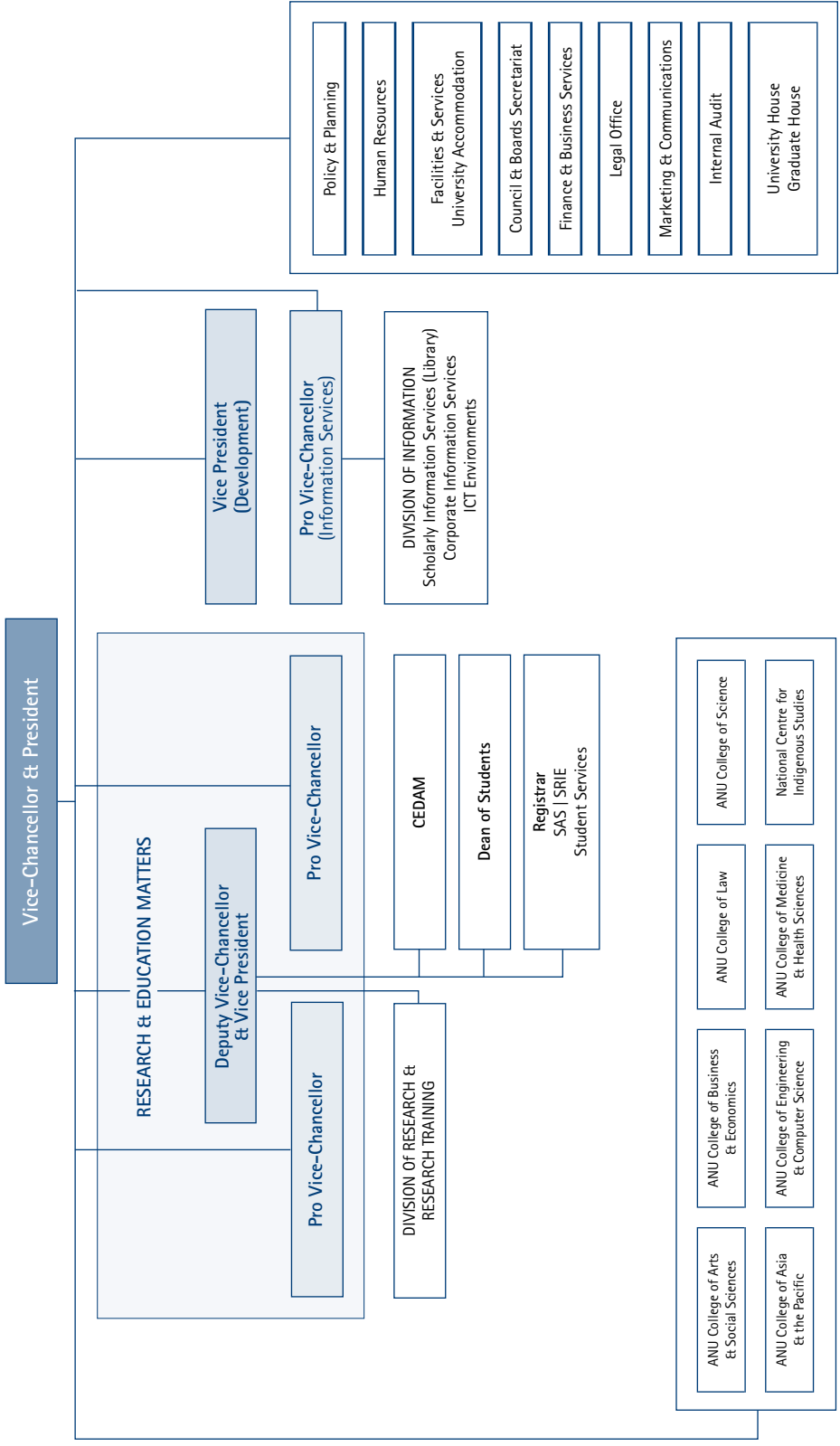
## ANU College of Science

- Centre for Resource and Environmental Studies
- Faculty of Science
- Mathematical Sciences Institute
- Research School of Astronomy and Astrophysics
- Research School of Biological Sciences
- Research School of Chemistry
- Research School of Earth Sciences
- Research School of Physical Sciences and Engineering

The National Centre for Indigenous Studies is a focal point for the coordination of Indigenous education and research across the ANU academic community.

The University structure can be viewed at page overleaf or at [http://info.anu.edu.au/OVC/Organisational\\_Structure/](http://info.anu.edu.au/OVC/Organisational_Structure/)

THE AUSTRALIAN NATIONAL UNIVERSITY ORGANISATIONAL STRUCTURE 2006



## Indemnities & insurance premiums for ANU officers

All employees of the University are covered by the Code of Conduct. The Code states:

---

*"The University will indemnify its staff against liabilities incurred by them while carrying out their duties in good faith for the University. It will stand behind its staff and meet the costs of actions that might be taken against them personally as though the action had been taken against the University, provided that the staff member concerned was acting in good faith."<sup>28</sup>*

---

## 2. FUNCTIONS OF THE UNIVERSITY'S STATUTORY OFFICERS

### Chancellor

The Chancellor presides at all meetings of Council and on all ceremonial occasions when available to do so. The Chancellor and the Vice-Chancellor sign the Annual Report of the University to Parliament.

### Pro-Chancellor

In the absence of the Chancellor, the Pro-Chancellor presides at meetings of the Council and on ceremonial occasions.

### Vice-Chancellor

The Vice-Chancellor is the Chief Executive Officer of the University. Under the *Vice-Chancellorship Statute 2002*, the Vice-Chancellor is charged with the responsibility to control and manage the affairs and concerns of the University and the real and personal property at any time vested in or acquired by the University, including the disposal of that property. The Vice-Chancellor has, and may exercise, such powers as are necessary or desirable to discharge those duties. The Vice-Chancellor also represents and acts for the University in its relations with the Commonwealth Government and other bodies.

## 3. POWERS OF THE UNIVERSITY

The University's powers are based on the *Australian National University Act 1991 (Cth)*. Subject to the Act, the University has power to do all things that are necessary or convenient to be done for, or in connection with, the performance of its functions outlined in section 5 of the Act. The University has made Statutes, Rules and Orders which can be viewed at <http://info.anu.edu.au/policies/Legislation>

The only delegated legislation that affects members of the public who are not members of the University community are Statutes made concerning the management of traffic and parking on campus, which can also be found at <http://info.anu.edu.au/policies/Legislation>

## 4. DOCUMENTS AVAILABLE FOR PURCHASE BY THE PUBLIC OR OTHERWISE ACCESSIBLE IN TERMS OF THE FREEDOM OF INFORMATION ACT 1982

- Council Statutes, Rules and Orders
- Annual Report of ANU to Parliament
- Annual reports of Schools, Faculties, Centres and Units to the Council
- Undergraduate Handbook
- Graduate Coursework Guide
- Purchasing Policy and Procedures

<sup>28</sup> [http://info.anu.edu.au/policies/Codes\\_Of\\_Practice/Human\\_Resources/Other/Code\\_of\\_Conduct.asp](http://info.anu.edu.au/policies/Codes_Of_Practice/Human_Resources/Other/Code_of_Conduct.asp)



- Finance and Business Manual (electronic version only)
- Occupational Health and Safety Unit information

Documents which are customarily made available to the public other than under the *Freedom of Information Act 1982*, free of charge upon request, are the *ANU Reporter*, information pamphlets and booklets on courses and academic requirements in various disciplines, information on external scholarships, leaflets on academic appointments in the Institute of Advanced Studies and in The Faculties, library guides, and an accommodation brochure.

Internal working documents include internal user manuals, Financial Authorisations, Personnel and Payroll (General) Manuals and other policy and procedural documents.

## 5. FACILITIES FOR ACCESS

Limited facilities for the perusal of documents applicable to individual areas are available at the Employment Services section of the Human Resources Division and/or Division of Registrar and Student Services. Many documents are also readily available through the internet at the University web site [www.anu.edu.au](http://www.anu.edu.au)

## 6. FOI PROCEDURES & INITIAL CONTACT POINTS

Applications for access to documents under the *Freedom of Information Act 1982* should be lodged in writing to the Manager, University Records. The written application should include details of the document or information sought, the application fee (currently \$30.00) or a request for its remission, an address to which notices may be sent and, to facilitate contact with the applicant, a telephone number effective during normal business hours. Lodged applications for access to documents will be acknowledged and a decision notified to the applicant as quickly as possible in accordance with the FOI Act.

Enquiries regarding freedom of information and access to documents may be made to:

University Records  
Lower Ground Floor  
Chancelry, Building No. 10a  
The Australian National University  
CANBERRA ACT 0200  
T: +61 2 6125 4237

# ACCESS

---

*This statement has been prepared to comply with section 18 of the Commonwealth Authorities and Companies (Report of Operations) Orders 2005 not covered in other sections of this report.*

---

The University continues to operationalise the employment goals of its Disability Action Plan 2005–2008. The goals relate to: Planning, Policy and Procedures; Physical Access; Information Access; and Employment.

An ANU Diversity initiative, ANU JobMatch, broadly aims to match staff from diverse backgrounds with vacancies in the University. The ANU Diversity initiative aims to fill entry-level general staff vacancies across the University with people from two identified, under-represented groups: people with a disability, and Aboriginal and Torres Strait Islander people.

A fund has been established to support equity employment initiatives and is accessible to areas within the University seeking assistance with costs associated with staff with a disability.

Continuing membership of Employers Making a Difference provides ANU with advice and training on the recruitment of staff with a disability. The University also uses local recruitment providers.

There is increasing demand from students for Disability Services Centre consultations, reflecting increasing numbers of students seeking such consultations and also increased complexity of disability issues and greater need for interventions. Figure 2 illustrates the growth in consultations.

In response to the continuing high demand for student services from students with a disability, the following initiatives have been implemented:

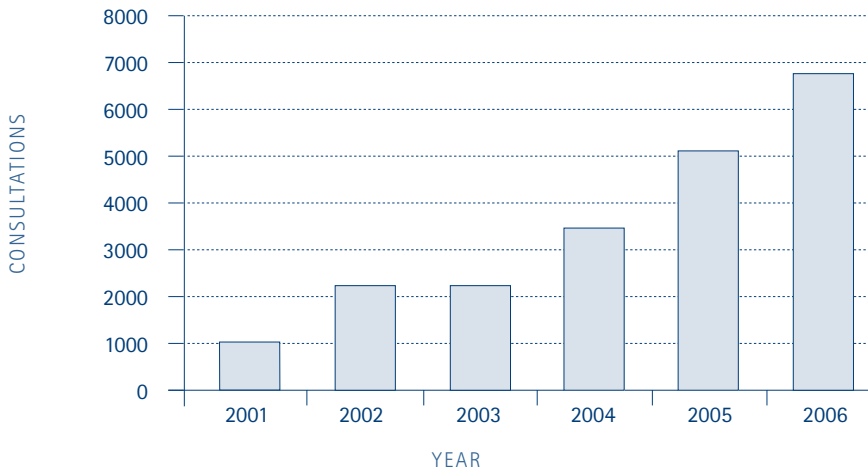
- Staffing of the Disability Services Centre has been increased to meet increasing demand.
- A full disability access audit of the campus has been conducted in 2005–2006 to identify any areas where physical access or access to services may need to be addressed. On receipt of the final audit report, a program of works to address access issues will be implemented.
- The full suite of Assistive Technology software has been integrated into the standard InfoCommons programs, allowing access to all software in all student computer laboratories at ANU, including Halls of Residence. Software in the package includes:
  - JAWS screen reading software
  - ZoomText screen enlarging software
  - Dragon NaturallySpeaking continuous voice recognition software
  - Kurzweill 3000 learning disability/vision impairment scan/read software
  - textAloud text-to-speech software
  - Inspiration mind-mapping software.

A number of other universities have contacted ANU to seek advice on implementing this approach to the provision of access to Assistive Technology. The integrated Assistive Technology has been operating successfully at ANU for all of 2006 and has been well received by students. It has significantly improved the efficiency of delivering access to the technology and improved the availability for students with disabilities.

- Continued participation in the Liberated Learning consortium, developing technology to transcribe lecture material. It is planned to integrate this text transcription software into Phase 2 of the Digital Lecture Delivery Project and conduct a trial in Semester 1, 2007.

- Several education and awareness training sessions on the Disability Standards for Education were conducted for ANU staff.
- A joint research project on the use of digital audio devices was conducted in conjunction with the University of Wollongong. The report can be found at: [www.anu.edu.au/disabilities/atproject/digital\\_audio/](http://www.anu.edu.au/disabilities/atproject/digital_audio/)

Figure 2: Total Number of Disability Services Centre Consultations



# RISK MANAGEMENT

---

*This statement has been prepared to comply with section 15 of the Commonwealth Authorities and Companies (Report of Operations) Orders 2005 not covered in other sections of this report.*

---

Risk management at ANU assists the protection of the University's key assets (reputation, people, finances, infrastructure and intellectual property) and provides risk assessment. Articulating with the strategic goals and objectives of the University, as identified in *ANU by 2010*, risk management key initiatives in 2006 included the following.

## GOVERNANCE

- Utilising risk assessment outcomes and intelligence to inform the ANU Internal Audit Plan
- The drafting of a risk management policy and associated framework for the University
- Development and implementation of the Travel to High Risk Destinations Policy in collaboration with the Division of Human Resources, Finance and Business Services and academic areas

## RISK STRATEGY

- Completion of risk profile self-assessment workshops for major academic and administrative areas
- Review of the University's business continuity planning framework in collaboration with Facilities and Services
- Provision of support, advice and training to the relevant ANU College Conveners and Heads of Administrative Divisions and Budget Units on risk management issues affecting their area, including the assessment of risk and the further development of business continuity plans
- Commencement of an environmental contaminants (biological, chemical, radiation) risk assessment for the major science areas in collaboration with Facilities and Services
- Development of the ANU Pandemic Influenza Response Strategy in line with the National and ACT Response Strategy
- Development of an ANU Contracts risk assessment tool (web-based) in collaboration with the ANU Legal Office and Research Office
- Development of the ANU risk management web portal
- Release of the ANU Fraud Control Plan

# A SAFE & HEALTHY PLACE

---

*This is a report into occupational health and safety matters of The Australian National University under the requirements of section 74 of the Occupational Health and Safety (Commonwealth Employment) Act 1991.*

---

The ANU Occupational Health and Safety (OHS) Policy<sup>29</sup> was updated in March 2003 and will be reviewed as part of the Health and Safety Management Arrangements in 2007. Additionally, the ANU Enterprise Agreement<sup>30</sup> (containing some OHS clauses) was certified in March 2006.

The University's main OHS Policy Committee was restructured to ensure representation from all of the seven Colleges and the Administration area. The 38 Designated Work Group OHS Committees<sup>31</sup> are generally aligned with the research, teaching and administrative areas of the University. A review of Designated Work Groups and OHS Committee structure is currently under way. Although there is only a fraction of Health and Safety Representatives<sup>32</sup> for these Designated Work Groups, there is a strong OHS committee membership in higher risk areas<sup>33</sup>.

During 2006, the OHS culture and function within the University was strengthened by:

- a) Sixty-five training courses, increasing the knowledge of 849 staff and students in hazard awareness, risk management principles and safe work processes and practices. This is slightly down on last year (962).

In addition to the 50 existing ANU Hazard Management Procedures, the following has occurred.

- b) New, updated or draft Hazard Management Procedures covering:
  - i) electrical safety (updated)
  - ii) provision of first aid services, incorporating a memorandum of understanding with Calvary Hospital on high risk processes, and use of Automatic External Defibrillators
  - iii) health surveillance, which was reinvigorated with policy, procedure and guidance material
  - iv) plant (equipment) policy and procedures (review is nearing completion)
  - v) chemical management procedures and guidelines (being reviewed).
- c) Audit and self-assessment activities related to:
  - i) OHS management system compliance
  - ii) forklifts
  - iii) ultraviolet light emitting devices.

<sup>29</sup> Occupational Health and Safety Policy, [http://info.anu.edu.au/policies/Policies/Human\\_Resources/ohs/OHS\\_Policy.asp](http://info.anu.edu.au/policies/Policies/Human_Resources/ohs/OHS_Policy.asp)

<sup>30</sup> ANU Australian National University Enterprise Agreement [http://info.anu.edu.au/hr/Salaries\\_and\\_Conditions/Enterprise\\_Agreement/index.asp](http://info.anu.edu.au/hr/Salaries_and_Conditions/Enterprise_Agreement/index.asp)

<sup>31</sup> ANU Designated Work Groups, DWGs [http://info.anu.edu.au/hr/OHS/OHS\\_Networks/Designated\\_Work\\_Groups.asp](http://info.anu.edu.au/hr/OHS/OHS_Networks/Designated_Work_Groups.asp)

<sup>32</sup> Designated Health and Safety Representatives, [http://info.anu.edu.au/hr/OHS/OHS\\_Networks/Health\\_and\\_Safety\\_Representatives.asp](http://info.anu.edu.au/hr/OHS/OHS_Networks/Health_and_Safety_Representatives.asp)

<sup>33</sup> OHS Committee membership, [http://info.anu.edu.au/hr/OHS/OHS\\_Networks/DWG\\_OHS\\_Committee\\_Members.asp](http://info.anu.edu.au/hr/OHS/OHS_Networks/DWG_OHS_Committee_Members.asp)

Arising from the conduct of undertakings of the University (ie excluding commuting and sporting), the following incidents were reported to Comcare:

0	Deaths
61	Serious Personal Injuries
17	Dangerous Occurrences

with appropriate corrective action having been taken or currently under way.

During 2006, Comcare conducted five investigations/audits into chemical issues (two), construction/demolition (two) and heat/fire (one).

In addition to Comcare and the Safety, Rehabilitation and Compensation Commission Safety Awards, the Occupational Health, Safety and Injury Management branch assisted compliance with Australian Radiation Protection and Nuclear Safety, National Industrial Chemicals Notification and Assessment Scheme, Australian Safeguards and Non-Proliferation Office, Australian Quarantine and Inspection Service, ACT WorkCover and ACT Health.

In general, The Australian National University endeavours to maintain a workplace that is, as far as reasonably practicable, safe and healthy for staff, students and visitors, considering the complexities and range of hazards and risks undertaken in its research and teaching activities and supporting functions.

## THE ENVIRONMENT

---

*This statement has been prepared to comply with section 516A of the Environment Protection and Biodiversity Conservation Act 1999.*

---

### 1. Activities of the University and their accordance to the principles of Ecologically Sustainable Development

The University provides world-class environmental education to undergraduate and postgraduate students, and undertakes cutting edge research into a diverse array of environment-related fields.

The University has demonstrated its commitment to the principles of Ecologically Sustainable Development (ESD), and the value of environmental education, through the establishment of an Environmental Policy (approved by the University Council) and a comprehensive management plan which has been approved by the Vice-Chancellor. The University is also a signatory to various national and international charters on sustainability, including the Talloires Declaration I and the National Union of Students ESD Charter, as well as being a voluntary participant in the Australian Greenhouse Challenge.

In its operations, the University has committed to the principles of ESD through its ESD policy statement, and through its comprehensive Environmental Management Plan (EMP) (2003–2008).

### 2. The contribution of appropriations outcomes to the principles of ESD

Aside from facilitating the provision of the research and education outcomes outlined in section 1, none of the University's appropriation outcomes have any ESD implications.

### 3. The impact of the University's activities on the environment

#### The environmental impacts of the University's activities

Through the provision of high quality research-based education in a number of environmental fields, the University provides undergraduate and postgraduate students with an understanding of the importance of integrating ecological, economic and social dimensions in decision making. This contributes to the growing awareness of the principles of ESD in society as a whole when these students graduate from the University. The University also undertakes research that contributes to a sustainable future for Australia and the world, through the development of ground breaking environmental technologies, and research into environmental problem solving, and the causes of environmental degradation.

#### The environmental impacts of the University's operations

The University has a population of over 17,000 staff and students, and occupies an area of 145 hectares. As such, a number of its operations have impacts on the environment, including energy and water consumption, waste generation, procurement and development.

The environmental impacts of the University's operations are outlined in detail in its annual report to the Australian Greenhouse Office, in accordance with its obligations under the Greenhouse Challenge Program. This report is forwarded to the Commonwealth in April each year. The report includes details on greenhouse gas emissions, energy (electricity, gas and fuel) consumption, recycling and waste management, and the sequestration of carbon dioxide. A detailed report which outlines the progress of the ANU EMP is published in April each year and is available for viewing at: [www.anu.edu.au/facilities/anugreen/EMPC/Reports/](http://www.anu.edu.au/facilities/anugreen/EMPC/Reports/)

### 4. Measures designed to reduce environmental impact

The University has developed a comprehensive EMP, which is designed to reduce its impact on the environment. The plan has been developed in accordance with ISO 14004 guidelines and is overseen by the University's Environmental Management Planning Committee. The EMP includes objectives, targets and key performance indicators designed to improve the University's environmental performance in a number of areas including: energy and greenhouse gas emission management; water usage and disposal; stormwater management; pollution prevention; recycling and waste management; biodiversity; transport; community awareness; and integrating environmental management. For further information see [www.anu.edu.au/facilities/anugreen/admin/plan/](http://www.anu.edu.au/facilities/anugreen/admin/plan/)

Specifically, the University has established programs that have reduced energy and water consumption, as well as waste to landfill. Projects are also being undertaken to measure and protect biodiversity and heritage values on campus. With significant building activities being undertaken over the next five years, the University has committed to designing and refurbishing buildings to ensure that they incorporate ESD principles. As a minimum, buildings will be designed to meet a 4.5 stars Australian Building Greenhouse Rating.

### 5. Reporting & review of effectiveness

The University's Environmental Management Planning Committee reports annually to the Vice-Chancellor on the progress of the EMP, as well as reporting to the Australian Greenhouse Office on its annual greenhouse gas emissions and to the Commonwealth under the National Environmental Protection Measures legislation.

# INFRASTRUCTURE

## NEW FACILITIES

During 2006, the University completed a number of new facilities associated with its teaching and research:

- a new building at Canberra Hospital housing the ANU Medical School's Canberra Clinical School
- new premises for The John Curtin School of Medical Research
- the ANU Research School of Astronomy and Astrophysics Advanced Instrumentation and Technology Centre
- refurbishment of the Le Couteur building
- renovations and an expansion of facilities at the NSW South Coast Kioloa site
- Physics/Psychology link building
- a student accommodation complex – UniLodge@ANU – was practically complete in December 2006, to be ready for occupation for Semester 1 in 2007. UniLodge@ANU is the first development in the ANU Exchange precinct under a Deed of Agreement with the ACT Government.

## CAPITAL INJECTION

The University received \$125m in funding in the 2006 Federal Budget to assist in meeting the costs of redevelopment of The John Curtin School of Medical Research (JCSMR) and other capital works. A schedule has been developed and the work will be undertaken over the period 2006–2010, with \$50m being allocated to Stage 2 JCSMR and \$75m to the upgrade of laboratory and science facilities. The University is also providing \$50m in matching funds, which will be directed into upgrading of University facilities and infrastructure as well as the construction of a new building to house the Crawford School of Economics and Government.

The Stage 2 JCSMR project has commenced and the building will house Immunology and Genetics, as well as PC3 facilities (for viral research), an infectious animal containment area and other facilities. After reviewing all options, the University has decided that the most efficient and economic way of meeting the School's rodent breeding and accommodation requirements is to upgrade the existing (and adjacent) Australian Phenomics Facility building. The planning for the latter is currently being undertaken.

The master planning for the upgrade of laboratories and science facilities has commenced, and as part of this the University anticipates a greater concentration of science activities on campus (generating the potential for enhanced collaboration, as well as allowing the University to more efficiently use laboratory and workshop infrastructure). The proposed work will be a mix of new buildings and refurbishment of existing facilities (noting that it would not be economical to upgrade some existing science facilities). Some minor work has already been undertaken using the matching funds provided by the University.

While all funds have been committed to work, the following was actual expenditure in 2006:

### Actual Expenditure at 31 December 2006

Expenditure from \$125m	
JCSMR	\$1,886,852
Expenditure from matching funds	\$768,925
<b>Total expenditure</b>	<b>\$2,655,777</b>

Given the nature of these projects, and the extensive planning required, expenditure will be low in the early stages, but will increase significantly in the years from 2007.



# THE COUNCIL & UNIVERSITY OFFICERS

## THE COUNCIL

### Chancellor

The Hon Emeritus Professor Peter E Baume AO, MB BS MD *Syd*, HonDLitt *USQ*, HonDUniv *ANU*, FRACP, FAFPHM, FRACGP (Hons) (to 3.2.06)

*Relevant experience: higher education; community service*

Dr Allan D Hawke, BSc (Hons) PhD *ANU*, FAIM, FIPAA, FAICD (from 4.2.06)

*Relevant experience: public sector management, governance, international relations*

### Vice-Chancellor

Professor Ian W Chubb AC, MSc DPhil *Oxon*, HonDSc *Flinders*, FACE

*Relevant experience: higher education*

### Seven members appointed by the Minister on the recommendation of the Nominations Committee of Council

The Hon Justice Annabelle C Bennett AO, BSc (Hons) PhD *Syd*, LLB *UNSW*  
*Relevant experience: higher education, community service, Judge, Senior Counsel, intellectual property, takeovers panel*

Ms Ilana R Atlas, BJuris LLB (Hons) *UWA*, LLM *Syd*

*Relevant experience: Group Executive, People and Performance, Westpac; compliance; human resources*

Mr Michael Delaney, BA *LaT*

*Relevant experience: Executive Director, Motor Trades Association of Australia; public administration; higher education*

Dr Vincent W J FitzGerald, BEc *UQ/Harv*, PhD *Harv*

*Relevant experience: Chair, The Allen Consulting Group Pty Ltd; public administration; higher education; chair of a firm consulting in economics; public policy and regulation; directorships in the finance, property and arts sectors*

Ms Robin Hughes AO, BA *Syd*

*Relevant experience: Independent producer, director and writer, media*

Ms Martine D Letts, BA *ANU*

*Relevant experience: Deputy Director, Lowy Institute for International Policy; international relations*

Mr David Miles, LLB *Melb* (from 28.7.06)

*Relevant experience: Company director*

Mr J Fulton Muir AO (to 30.6.06)

*Relevant experience: Chair, Finance Committee; banking; community service*

### One person who is either a Dean or the Head of a Research School and is elected, in either case, by the Deans and the Heads of the Research Schools voting together

Professor Michael Coper, BA LLB (Hons) *Syd*, PhD *UNSW* (to 29.9.06)

*Relevant experience: Barrister NSW, Barrister and Solicitor ACT; Dean, ANU College of Law*

Professor Frank Jackson, BSc BA *Melb*, PhD *LaT*, FAHA FBA (from 30.9.06 to 20.11.06)

*Relevant experience: Director, Research School of Social Sciences, ANU*

Professor Jim Williams, BSc PhD *UNSW*, FAIP, FIEAust, FTSE (from 24.11.06)

*Relevant experience: Director, Research School of Physical Sciences and Engineering, ANU*

### One member of the academic staff of the Institute of Advanced Studies elected by the members of that staff

Dr Ian Morgan, BSc *Melb*, PhD *Monash*

*Relevant experience: Research Fellow, Research School of Biological Sciences, ANU*

One member of the academic staff of The Faculties elected by the members of that staff

Dr Anthea Hyslop, BA *Adel/LaT*, PhD *LaT*  
*Relevant experience: Senior Lecturer, School of Social Sciences, ANU*

One member of the general staff of the University elected by members of that staff

Ms Karen Hill, BMgt *UC*, GradCertMgt *ANU*, AImm (to 25.5.06)  
*Relevant experience: General Manager, School of Music, ANU*

Mr Bill Speed, DipProjMgmt *UNE* (from 26.5.06)  
*Relevant experience: tertiary education, project management*

One postgraduate student of the University elected by the postgraduate students of the University

Mr Brett C Baker, BA *Utah State*, MA *Wisconsin* (to 7.8.06)  
*Relevant experience: tertiary education as a student and researcher*

Mr Benjamin Heslop, BEng(Hons) *ANU* (from 8.8.06 to 16.10.06)  
*Relevant experience: tertiary education as research student*

Mr Grant Kennedy, BTech(Hons) *Massey*, BSc(Hons) *Wellington* (from 17.10.06)  
*Relevant experience: tertiary education as research student*

One undergraduate student of the University elected by the undergraduate students of the University

Miss M Laura Crespo (to 30.11.06)  
*Relevant experience: fourth-year undergraduate student*

Ms Claudia Newman-Martin (from 1.12.06)  
*Relevant experience: second-year undergraduate student*

# THE COUNCIL & UNIVERSITY OFFICERS

## UNIVERSITY OFFICERS

Chancellor	The Hon Emeritus Professor Peter E Baume AO, MB BS MD <i>Syd</i> , HonDLitt <i>USQ</i> , HonDUniv <i>ANU</i> , FRACP, FAFPHM, FRACGP (Hon) (to 3.2.06) Dr Allan D Hawke, BSc(Hons) PhD <i>ANU</i> , FAIM, FIPAA, FAICD (from 4.2.06)
Pro-Chancellor	The Hon Justice Annabelle Claire Bennett AO, BSc(Hons) PhD <i>Syd</i> , LLB <i>UNSW</i>
Vice-Chancellor & President	Professor Ian William Chubb AC, MSc DPhil <i>Oxon</i> , HonDSc <i>Flinders</i> , FACE
Deputy Vice-Chancellor & Vice-President	Professor Lawrence Cram, BSc(Hons) BE(Hons) PhD <i>Syd</i> (from 2.10.06)
Deputy Vice-Chancellor (Research)	Professor Lawrence Cram, BSc(Hons) BE(Hons) PhD <i>Syd</i> (to 1.10.06)
Vice-President (Development)	Professor Malcolm Gillies, BA <i>ANU</i> , MA <i>Camb</i> , MMus PhD <i>Lond</i> , DMus <i>Melb</i> , DipEd <i>Qld</i> , LMusA, LTCL, FLCM, FAHA (from 1.10.06)
Deputy Vice-Chancellor (Education)	Professor Malcolm Gillies, BA <i>ANU</i> , MA <i>Camb</i> , MMus PhD <i>Lond</i> , DMus <i>Melb</i> , DipEd <i>Qld</i> , LMusA, LTCL, FLCM, FAHA (to 30.9.06)
Pro Vice-Chancellor (Information Services)	Professor Robin Barrington Stanton, BE PhD <i>UNSW</i>
Pro Vice-Chancellor	Professor William Steffen, BSc <i>Missouri-Rolla</i> , MSc PhD <i>Florida</i> (from 2.10.06)
Pro Vice-Chancellor	Professor Mandy Thomas, BA(Hons) PhD <i>ANU</i> (from 13.11.06)
Pro Vice-Chancellor (University Community)	Professor Penelope Oakes, BSc PhD <i>Bristol</i> (to 29.10.06)
Director, Policy & Planning (Resources)	Dr Brok Glenn, BSc(Hons) PhD <i>Lond</i>
Director, Policy & Planning	Mr Michael Gallagher, BA(Hons) DipEd <i>Macquarie</i>
Convener, ANU College of Arts & Social Sciences	Professor Frank Jackson, BSc BA <i>Melb</i> , PhD <i>LaT</i> , FAHA FBA (to 12.11.06) Professor Mandy Thomas, BA(Hons) PhD <i>ANU</i> (from 13.11.06)
Convener, ANU College of Asia & the Pacific	Professor James Fox, AB <i>Harv</i> , BLitt DPhil <i>Oxon</i> , KNAW, FASSA (to 19.2.06) Professor Robin Jeffrey, BA <i>Victoria</i> (BC), DPhil <i>Sussex</i> (from 20.2.06)

Convener & Dean, ANU College of Business & Economics	Professor Keith A Houghton, BCom <i>Melb</i> , MSc (Econ) <i>Lond</i> , PhD <i>WAust</i> , FCA, FCPA
Convener & Dean, ANU College of Engineering & Computer Science	Professor John Richards, BE PhD <i>UNSW</i> , FIREE, FIEAust, FIEEE, FTSE, CPEng
Convener & Dean, ANU College of Law	Professor Michael Coper, BA LLB <i>Syd</i> , PhD <i>UNSW</i> , Barrister NSW, Barrister and Solicitor ACT
Convener, ANU College of Medicine & Health Sciences	Professor Judith Whitworth AC, DSc MD PhD BS <i>Melb</i> , FRACP
Convener, ANU College of Science	Professor Denis Evans, BSc <i>Syd</i> , PhD <i>ANU</i> , FRACI, FAA
Dean, ANU College of Arts & Social Sciences	Professor Adam Shoemaker, BA(Hons) <i>Queen's</i> , PhD <i>ANU</i>
Dean, ANU College of Asia & the Pacific	Dr Aat Vervoorn, BA MA <i>Cant</i> , BA (Asian Studies) PhD <i>ANU</i> (interim to 31.1.06) Professor Ann L Kumar, BA (Oriental Studies) PhD <i>ANU</i> , FAHA (from 1.2.06 to 7.7.06) Professor Rikki Kersten, BA BA(Hons) <i>Adel</i> , DPhil <i>Oxon</i> (from 11.7.06)
Dean, ANU College of Medicine & Health Sciences	Professor Paul A Gatenby, MBBS <i>Tas</i> , PhD <i>Syd</i> , FRACP, FRCPA, MRACMA
Dean, ANU College of Science	Professor Timothy Carlisle Brown, BSc <i>Monash</i> , PhD <i>Camb</i>
Dean, Faculty of Arts	Professor Adam Shoemaker, BA (Hons) <i>Queen's</i> , PhD <i>ANU</i>
Dean, Faculty of Asian Studies	Dr Aat Vervoorn, BA MA <i>Cant</i> , BA (Asian Studies) PhD <i>ANU</i> (acting to 31.1.06) Professor Ann L Kumar, BA (Oriental Studies) PhD <i>ANU</i> , FAHA (from 1.2.06 to 7.7.06) Professor Rikki Kersten, BA BA(Hons) <i>Adel</i> , DPhil <i>Oxon</i> (from 11.7.06)
Dean, Faculty of Engineering & Information Technology	Professor John Richards, BE PhD <i>UNSW</i> , FIREE, FIEAust, FIEEE, FTSE, CPEng
Dean, Faculty of Law	Professor Michael Coper, BA LLB <i>Syd</i> , PhD <i>UNSW</i> , Barrister NSW, Barrister and Solicitor ACT
Dean, Faculty of Science	Professor Timothy Carlisle Brown, BSc <i>Monash</i> , PhD <i>Camb</i>
Dean, ANU Medical School	Professor Paul A Gatenby, MBBS <i>Tas</i> , PhD <i>Syd</i> , FRACP, FRCPA, MRACMA

Director, The John Curtin School of Medical Research	Professor Judith Whitworth AC, DSc MD PhD BS <i>Melb</i> FRACP
Director, Research School of Astronomy & Astrophysics	Professor Penny D Sackett, BS <i>UNO</i> , MS PhD <i>UPIIT</i>
Director, Research School of Biological Sciences	Professor Jonathan Stone, BSc(Med)(Hons) PhD DSc <i>Syd</i> , FAAS, FAIB
Dean, Research School of Chemistry	Professor Denis Evans, BSc <i>Syd</i> , PhD <i>ANU</i> , FRACI, FAA
Director, Research School of Earth Sciences	Professor T Mark Harrison, BSc <i>BritCol</i> , PhD <i>ANU</i> (to 1.4.06) Professor Ross W Griffiths, BSc PhD <i>ANY</i> FAIP FAA ( from 2.4.06 to 3.9.06) Professor Brian L N Kennett, MA PhD ScD <i>Camb</i> , FRAS, FAA, FRS (from 4.9.06)
Director, Research School of Information Sciences & Engineering	Professor John Richards, BE PhD <i>UNSW</i> , FIREE, FIEAust, FIEEE, FTSE, CPEng
Director, Research School of Pacific & Asian Studies	Professor James Fox, AB Harv, BLitt DPhil <i>Oxon</i> , KNAW, FASSA (to 19.2.06) Professor Robin Jeffrey, BA <i>Victoria</i> (BC), DPhil <i>Sussex</i> (from 20.2.06)
Director, Research School of Physical Sciences & Engineering	Professor Jim Williams, BSc PhD <i>UNSW</i> , FAIP, FIEAust, FTSE
Director, Research School of Social Sciences	Professor Frank Jackson, BSc BA <i>Melb</i> , PhD <i>LaT</i> , FAHA FBA
Director, Centre for Resource & Environmental Studies	Professor William Steffen, BSc <i>Missouri-Rolla</i> , MSc PhD <i>Florida</i> (to 1.10.06) Professor Mike Hutchinson, BSc(Hons) MSc PhD DipCompSc <i>Syd</i> (acting from 2.10.06)
Dean, Mathematical Sciences Institute	Professor Alan Carey, BSc <i>Syd</i> , MSc <i>Adel</i> , DPhil <i>Oxon</i>
Director, Asia Pacific College of Diplomacy	Professor William Maley AM, BEc LLB MA <i>ANU</i> , PhD <i>UNSW</i>
Director, Crawford School of Economics & Government	Professor Andrew MacIntyre, BA(Hons) MA PhD <i>ANU</i>
Director, Australian Centre for Economic Research on Health	Professor James Butler, BEcon MPolEcon PhD <i>Qld</i>

Director, Australian Primary Health Care Research Institute	Professor Nicholas Glasgow, MBChB, MD, FRNZGP, FRACGP, FChPM
Director, Centre for Aboriginal Economic Policy Research	Professor Jon Altman, BA MA(Hons) <i>Auck</i> , PhD <i>ANU</i>
Director, Centre for Cross Cultural Research	Professor Howard Morphy, BSc MPhil <i>Lond</i> , PhD <i>ANU</i>
Director, Centre for Mental Health Research	Professor Helen Christensen, BA(Hons) <i>Syd</i> , MPsych PhD <i>UNSW</i> , FASSA
Director, Humanities Research Centre	Professor Ian Donaldson, BA(Hons) <i>Melb</i> , MA <i>Oxon</i> , FAHA, FBA, FRSE
Director, National Centre for Epidemiology & Population Health	Professor Anthony McMichael, MB BS <i>Adel</i> , PhD <i>Monash</i> , FAFPHM FTSE
Director, National Centre for Indigenous Studies	Professor Michael Dodson AM
Director, National Europe Centre	Professor Simon Bronitt, LLB <i>Bristol</i> , LLM <i>Camb</i>
Dean, The Graduate School	Professor Gail Florence Huon, BSc MMus PhD <i>UNSW</i> , DipMusEd <i>NSWCM</i> (to 31.10.06)
Dean of Students	Professor Penelope Oakes, BSc PhD <i>Bristol</i> (from 30.10.06)
Chief Finance Officer & Director, Finance and Business Services	Mr David Sturgiss, BComm <i>UNSW</i> , CA MAICD
Director, Human Resources	Mr Mark Clisby, BA(Hons) <i>Adel</i> , GradDip (Adult & Further) Ed SACAE, MEd (Human Resources Studies) <i>UniSA</i> (to 23.7.06) Mr Ron Watts, BCom <i>WAI</i> , MCom <i>Melb</i> , GradDip(BusMgt) <i>Monash</i> , GradCert (HRMgt) <i>Aust Quality Council</i> , FAHRI (from 24.7.06)
Director, Student & Academic Services Director, Student Recruitment & International Education	Mr Timothy Beckett, MA <i>Dub</i> (to 29.10.06)
Registrar	Mr Timothy Beckett, MA <i>Dub</i> (from 30.10.06)
Director, Research Office	Dr Ian McMahon, BSc PhD <i>ANU</i>
Director, Facilities & Services	Mr Warwick Raymond Williams, BSc <i>UNSW</i>

Director, Marketing & Communications Division	Mr Phillip Rae McKenzie, BEc <i>Syd</i>
Director, University Advancement	Dr Miriam Baltuck, BSc <i>Michigan</i> , PhD <i>California</i> (to 25.5.06)
Director, Office of Quality Enhancement & Statistical Services	Professor Marie Carroll, BA(Hons) PhD <i>Otago</i> , MAPS
Director, Scholarly Information Services & University Librarian	Mr Victor George Elliot, MA <i>Wellington</i> , MLitt <i>Oxon</i> , DipNZLS AALIA FNZLIA
Director, Corporate Information Services	Mr Rick Van Haefen, GradDipIT <i>UNSW</i>
Director, ICT Environments	Dr Markus Buchhorn, PhD <i>ANU</i> , BSc(Hons) <i>Melb</i>
Head, Council & Boards Secretariat	Ms Jan O'Connor, BA <i>James Cook</i>
University Solicitor	Mr Kenneth Grime, BEc LLB <i>Monash</i> , Barrister and Solicitor
Director, University Accommodation	Ms Marie Wensing
Master, University House & Graduate House	Professor John Richards, BE PhD <i>UNSW</i> , FIREE, FIEAust, FIEEE, FTSE, CPEng
Head, Bruce Hall	Mr Ian Bruce Robert, Dip Teach <i>GCAE</i> , BEd <i>BCAE</i> , GradDipEduAdmin <i>Griffith</i> , MEduAdmin <i>NE</i> (to 30.9.06) Dr Neil Rodgers, BA(Hons) HDE <i>Natal</i> , MEd <i>Ottawa</i> , PhD <i>Macquarie</i> (from 3.10.06)
Head, Burton & Garran Hall	Dr Richard Adams, BA <i>Tas</i> , BEd(Hons) <i>MIR</i> , PhD <i>WAust</i>
Head, Fenner Hall	Mr Peter Fyfe, GradCertBus GradDipBus <i>Canberra</i>
Head, Toad Hall	Mr Selwyn Harcourt Cornish AM, BEc <i>WAust</i>
Head, Ursula Hall	Mr Keith Conley, BA(Hons) <i>ANU</i>
Officers for Ceremonial Occasions	Marshal Mr Selwyn Harcourt Cornish AM, BEc <i>WAust</i> Mr Timothy Bambrick, BComm <i>ANU</i> , MBA <i>Deakin</i> (Alternate)
Esquire Bedell	Mrs Julie Gorrell, BA <i>ANU</i> Mr Gordon Hill AM, BA <i>UNSW</i> , GradDipStrategicStudies <i>ACTAA</i> , MDefStud <i>Deakin</i> , AFAIM (Alternate)

# COUNCIL & COUNCIL COMMITTEES

Number of meetings and Members' attendance for the period 1.1.06 to 31.12.06

## COUNCIL

Number of meetings: 6			
Name of Member	Attended	Name of Member	Attended
Dr A Hawke (Chair)	5	Ms R Hughes AO	6
The Hon Justice A Bennett AO	5	Dr A Hyslop*	6
Professor I Chubb AC*	6	Professor F Jackson (from 30.9.06 to 20.11.06)*	0
Ms I Atlas	4	Mr G Kennedy (from 17.10.06)**	1
Mr B Baker (to 7.8.06)**	4	Ms M Letts	5
Professor M Coper (to 29.9.06)*	4	Mr D Miles (from 28.7.06)	1
Ms L Crespo (to 30.11.06)**	5	Dr I Morgan*	4
Mr M Delaney	6	Mr J F Muir AO (to 30.6.06 )	2
Dr V FitzGerald	6	Ms C Newman-Martin (from 1.12.06)**	1
Mr B Heslop (from 8.8.06 to 16.10.06)**	1	Mr W Speed (from 27.5.06)*	4
Ms K Hill (to 26.5.06)*	2	Professor J Williams (from 24.11.06)*	0

## AUDIT & RISK MANAGEMENT COMMITTEE

Number of meetings: 7			
Name of Member	Attended	Name of Member	Attended
Professor K Houghton (Chair to 1.6.06)*	4	Dr I Morgan*	7
Mr P McPhillips (Chair from 2.6.06)	3	Mr J F Muir AO (to 30.6.06)	4
Mr M Delaney (from 1.7.06)	3	Professor P Perkins	6
Mr D Lawler	7		

## FINANCE COMMITTEE

Number of meetings: 5			
Name of Member	Attended	Name of Member	Attended
Mr J F Muir AO (Chair to 30.6.06)	2	Mr A Hedley	4
Mr M Delaney (Chair from 1.7.06)	5	Professor K Houghton (to 1.6.06)*	1
Professor I Chubb AC*	5	Dr M Keating	2
The Hon Justice A Bennett AO	2	Mr P McPhillips (from 2.6.06)	3
Mr R Ferguson	3	Ms A Terry	2
Mr P Gourley (from 1.7.06)	2		



## HONORARY DEGREES COMMITTEE

**Number of Meetings: 1**

Name of Member	Attended	Name of Member	Attended
The Hon Emeritus Professor P Baume AO (Chair to 3.2.06)	0	Professor M Gillies*	0
Dr A Hawke (Chair from 4.2.06)	1	Ms R Hughes AO	1
The Hon Justice A Bennett AO	1	Professor G Huon*	1
Professor I Chubb AC*	1	Ms M Letts (from 1.7.06)	0
Mr B Baker**	0	Mr J F Muir AO (to 30.6.06)	0
Professor L Cram*	1	Professor N Peterson*	1
Dr V FitzGerald	1	Dr S Von Caemmerer*	1

Alternate for absent member

Ms M Letts (for Mr Muir)	1
--------------------------	---

## COMMITTEE ON CONDITIONS OF APPOINTMENT OF THE VICE-CHANCELLOR

**Number of Meetings:** Committee members conferred as required throughout 2006 regarding conditions of appointment of the Vice-Chancellor.

**Name of Member**

The Hon Emeritus Professor P Baume AO (to 3.2.06)	Mr J F Muir AO (to 30.6.06)
Dr A Hawke (from 4.2.06)	Mr M Delaney (from 1.7.06)
The Hon Justice A Bennett AO	

## EMERGENCY APPOINTMENT (VICE-CHANCELLOR) COMMITTEE

**Number of Meetings: 0**

**Name of Member**

The Hon Emeritus Professor P Baume AO (to 3.2.06)	Mr J F Muir AO (to 30.6.06)
Dr A Hawke (from 4.2.06)	Mr M Delaney (from 1.7.06)
The Hon Justice A Bennett AO	

## NOMINATIONS COMMITTEE OF COUNCIL

**Number of Meetings: 0**

**Name of Member**

The Hon Emeritus Professor P Baume AO (to 3.2.06)	Dr I Morgan*
Dr A Hawke (from 4.2.06)	Mr R King
The Hon Justice A Bennett AO	Mr A Moss
Professor I Chubb AC*	Mr R Williams AM

\* ANU staff member

\*\* ANU student



## INDEPENDENT AUDIT REPORT

To the Minister for Education, Science and Training

### Matters relating to the Electronic Presentation of the Audited Financial Statements

This audit report relates to the financial statements published in both the annual report and on the website of the Australian National University for the year ended 31 December 2006. The Chancellor is responsible for the integrity of both the annual report and the web site.

The audit report refers only to the financial statements, schedules and notes named below. It does not provide an opinion on any other information which may have been hyperlinked to or from the audited financial statements.

If users of this report are concerned with the inherent risks arising from electronic data communications, they are advised to refer to the hard copy of the audited financial statements in the Australian National University's annual report.

### Scope

#### *The financial statements and directors' responsibility*

The financial statements comprise:

- Statement by Directors;
- Income Statement, Balance Sheet, Statement of Recognised Income and Expense and Cash Flow Statement;
- Schedules of Commitments and Contingencies; and
- Notes to and forming part of the Accounts

for both the Australian National University and the consolidated entity for the year ended 31 December 2006. The consolidated entity comprises both the Australian National University and the entities it controlled during that year.

The Council members are responsible for preparing the financial statements that give a true and fair view of the financial position and performance of the Australian National University and the consolidated entity, and that comply with Finance Minister's Orders made under the *Commonwealth Authorities and Companies Act 1997* and with Australian Accounting Standards and other mandatory financial reporting requirements. The Council members are also responsible for the maintenance of adequate accounting records and internal controls that are designed to prevent and detect fraud and error, and for the accounting policies and accounting estimates inherent in the financial statements.

### **Audit Approach**

I have conducted an independent audit of the financial statements in order to express an opinion on them to you. My audit has been conducted in accordance with the Australian National Audit Office Auditing Standards, which incorporate the Australian Auditing Standards, in order to provide reasonable assurance as to whether the financial statements are free of material

GPO Box 707 CANBERRA ACT 2601  
19 National Circuit BARTON ACT  
Phone (02) 6203 7300 Fax (02) 6203 7777

misstatement. The nature of an audit is influenced by factors such as the use of professional judgement, selective testing, the inherent limitations of internal control, and the availability of persuasive, rather than conclusive, evidence. Therefore, an audit cannot guarantee that all material misstatements have been detected.

While the effectiveness of management's internal controls over financial reporting was considered when determining the nature and extent of audit procedures, the audit was not designed to provide assurance on internal controls.

I have performed procedures to assess whether in all material respects the financial statements present fairly, in accordance with Finance Minister's Orders made under the *Commonwealth Authorities and Companies Act 1997*, and Australian Accounting Standards and other mandatory financial reporting requirements, a view which is consistent with my understanding of the Australian National University's and the consolidated entity's financial positions, and of their financial performances and cash flows.

The audit opinion is formed on the basis of these procedures, which included:

- examining, on a test basis, information to provide evidence supporting the amounts and disclosures in the financial statements; and
- assessing the appropriateness of the accounting policies and disclosures used, and the reasonableness of significant accounting estimates made by the Council members.

#### **Independence**

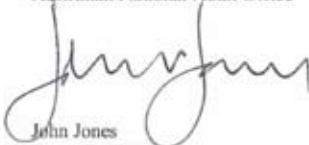
In conducting the audit, I have followed the independence requirements of the Australian National Audit Office, which incorporate the ethical requirements of the Australian accounting profession.

#### **Audit Opinion**

In my opinion, the financial statements of the Australian National University and the consolidated entity:

- (a) have been prepared in accordance with Finance Minister's Orders made under the *Commonwealth Authorities and Companies Act 1997*; and
- (b) give a true and fair view of the Australian National University's and the consolidated entity's financial positions as at 31 December 2006 and of their performances for the year then ended, in accordance with:
  - (i) the matters required by the Finance Minister's Orders; and
  - (ii) applicable Accounting Standards and other mandatory financial reporting requirements in Australia.

Australian National Audit Office



John Jones  
Executive Director  
Delegate of the Auditor-General

Canberra  
4 April 2007

DR ALLAN HAWKE  
Chancellor

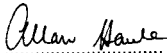
Canberra ACT 0200 Australia  
T: +61 2 6125 2113  
F: +61 2 6125 8524  
E: Chancellor@anu.edu.au  
www.anu.edu.au

**CONSOLIDATED FINANCIAL STATEMENTS FOR YEAR ENDED  
31 DECEMBER 2006**

**STATEMENT BY DIRECTORS**

In the opinion of the Council, the Financial Statements for the University and the consolidated Financial Statements for the Economic Entity have been prepared based on properly maintained financial records and give a true and fair view of the matters required by Schedule 1 of the *Commonwealth Authorities and Companies (Requirements and Guidance for the Preparation of Financial Reports of Australian Government Entities for reporting periods ending on or after 1 July 2006) Orders* made under the *Commonwealth Authorities and Companies Act 1997 (FMO)* and the *Guidelines for the Preparation of Annual Financial Reports for the 2006 Reporting Period* by Australian Higher Education Institutions issued by the Department of Education, Science and Training.

In our opinion, at the date of this statement there are reasonable grounds to believe that the University will be able to pay its debts as and when they become due and payable.



A D HAWKE  
Chancellor



I W CHUBB  
Vice-Chancellor

30 March 2007

THE AUSTRALIAN NATIONAL UNIVERSITY

**INCOME STATEMENT  
FOR THE YEAR ENDED 31 DECEMBER 2006**

	Notes	Consolidated		University	
		2006 \$'000	2005 \$'000	2006 \$'000	2005 \$'000
<b>INCOME</b>					
<b>Revenue</b>					
Australian Government financial assistance					
Australian Government Grants	2	421,262	415,394	421,262	415,394
Higher Education Contribution Scheme - HECS-HELP					
Australian Government payments	2	24,396	23,139	24,396	23,139
Student payments		7,653	7,395	7,653	7,395
Fee-Higher Education Loan Programme - FEE-HELP	2	6,025	7,015	6,025	7,015
State Government financial assistance	3	2,583	2,298	2,583	2,298
Fees and charges	4	78,622	66,546	74,900	62,905
Investment Income	5	106,212	98,934	105,574	98,721
Consultancy and contracts	6	50,378	41,334	45,957	38,248
Other revenue	7	55,017	41,365	51,749	36,567
<b>Total Revenue</b>		<b>752,148</b>	<b>703,420</b>	<b>740,099</b>	<b>691,682</b>
<b>Gains</b>					
Gains on revaluation	8	2,919	-	2,919	-
<b>Total Gains</b>		<b>2,919</b>	<b>-</b>	<b>2,919</b>	<b>-</b>
<b>TOTAL INCOME</b>		<b>755,067</b>	<b>703,420</b>	<b>743,018</b>	<b>691,682</b>
<b>EXPENSES</b>					
Employees	9	352,927	351,061	350,978	349,000
Services	10	247,670	253,421	238,572	244,569
Depreciation and amortisation	11	42,643	39,080	42,376	38,809
Impairment losses	12	2,128	3,434	2,119	3,425
Write-down of assets	13	105	230	105	242
Borrowing cost expense	14	8,249	7,185	8,249	7,185
Losses on disposal of assets	15	877	1,930	882	1,930
Other expenses	16	(180)	254	(180)	254
<b>TOTAL EXPENSES</b>		<b>654,419</b>	<b>656,595</b>	<b>643,101</b>	<b>645,414</b>
<b>Operating result before significant item and income tax</b>		<b>100,648</b>	<b>46,825</b>	<b>99,917</b>	<b>46,268</b>
Income tax expense	17	91	(147)	-	-
Significant Item	2	125,000	-	125,000	-
<b>OPERATING RESULT</b>		<b>225,739</b>	<b>46,678</b>	<b>224,917</b>	<b>46,268</b>

## THE AUSTRALIAN NATIONAL UNIVERSITY

BALANCE SHEET  
AS AT 31 DECEMBER 2006

	Notes	Consolidated		University	
		2006 \$'000	2005 \$'000	2006 \$'000	2005 \$'000
<b>ASSETS</b>					
<b>Financial Assets</b>					
Cash	19	138,487	79,774	132,426	74,705
Receivables	20	39,539	35,821	30,245	29,080
Investments	21	1,103,369	899,593	1,110,150	906,724
<b>Total Financial Assets</b>		<b>1,281,395</b>	<b>1,015,188</b>	<b>1,272,821</b>	<b>1,010,509</b>
<b>Non-Financial Assets</b>					
Land, buildings and infrastructure	22	1,057,130	898,442	1,048,780	891,002
Plant and equipment	22	158,343	159,970	158,164	159,800
Inventories	23	9,138	7,220	1,072	1,976
Intangibles	24	86	96	-	-
Other non-financial assets	25	30,739	24,727	30,721	24,708
<b>Total Non-Financial Assets</b>		<b>1,255,436</b>	<b>1,090,455</b>	<b>1,238,737</b>	<b>1,077,486</b>
<b>TOTAL ASSETS</b>		<b>2,536,831</b>	<b>2,105,643</b>	<b>2,511,558</b>	<b>2,087,995</b>
<b>LIABILITIES</b>					
<b>Payables</b>					
Suppliers	26	21,748	18,753	21,101	18,299
Other payables	27	31,299	24,205	11,788	10,201
<b>Total Payables</b>		<b>53,047</b>	<b>42,958</b>	<b>32,889</b>	<b>28,500</b>
<b>Interest Bearing Liabilities</b>					
Loans Payable	28	116,146	115,021	116,146	115,021
<b>Total Interest Bearing Liabilities</b>		<b>116,146</b>	<b>115,021</b>	<b>116,146</b>	<b>115,021</b>
<b>Provisions</b>					
Employee Benefits	29	557,134	577,844	556,681	577,416
<b>Total Provisions</b>		<b>557,134</b>	<b>577,844</b>	<b>556,681</b>	<b>577,416</b>
<b>TOTAL LIABILITIES</b>		<b>726,327</b>	<b>735,823</b>	<b>705,716</b>	<b>720,937</b>
<b>NET ASSETS</b>		<b>1,810,504</b>	<b>1,369,820</b>	<b>1,805,842</b>	<b>1,367,058</b>
<b>EQUITY</b>					
<b>PARENT ENTITY INTEREST</b>					
Reserves	18	1,031,758	910,804	1,026,908	907,084
Retained Surpluses		778,746	459,016	778,934	459,974
<b>TOTAL EQUITY</b>		<b>1,810,504</b>	<b>1,369,820</b>	<b>1,805,842</b>	<b>1,367,058</b>
<b>CURRENT ASSETS</b>		<b>261,959</b>	<b>203,190</b>	<b>238,434</b>	<b>186,021</b>
<b>NON-CURRENT ASSETS</b>		<b>2,274,872</b>	<b>1,902,453</b>	<b>2,273,124</b>	<b>1,901,974</b>
<b>CURRENT LIABILITIES</b>		<b>139,547</b>	<b>135,085</b>	<b>119,247</b>	<b>120,583</b>
<b>NON-CURRENT LIABILITIES</b>		<b>586,780</b>	<b>600,738</b>	<b>586,469</b>	<b>600,354</b>

THE AUSTRALIAN NATIONAL UNIVERSITY

STATEMENT OF RECOGNISED INCOME AND EXPENSE  
FOR THE YEAR ENDED 31 DECEMBER 2006

	Consolidated		University	
	2006 \$'000	2005 \$'000	2006 \$'000	2005 \$'000
Revaluation of Property, Plant and Equipment	148,922	19,223	147,814	18,504
Net Change in Fair Value of Available-For-Sale Financial Assets	65,414	87,197	65,392	87,144
Adjustments direct to equity re Income Tax	(52)	79	-	-
Defined Benefit Actuarial Gains (Losses)	23,707	(3,407)	23,707	(3,407)
<b>Income and Expenses recognised directly in Equity</b>	<b>237,991</b>	<b>103,092</b>	<b>236,913</b>	<b>102,241</b>
Operating Result for the period	225,739	46,678	224,917	46,268
<b>Total recognised income and expense for the period</b>	<b>463,730</b>	<b>149,770</b>	<b>461,830</b>	<b>148,509</b>

The above statement should be read in conjunction with the accompanying notes.

## THE AUSTRALIAN NATIONAL UNIVERSITY

CASH FLOW STATEMENT  
FOR THE YEAR ENDED 31 DECEMBER 2006

	Notes	Consolidated		University	
		2006 \$'000	2005 \$'000	2006 \$'000	2005 \$'000
<b>OPERATING ACTIVITIES</b>					
<b>Cash received</b>					
Australian Government financial assistance		571,124	441,913	571,124	441,913
State Government financial assistance		2,099	2,341	2,099	2,341
HECS-HELP - student payments		7,653	7,395	7,653	7,395
Fees and charges		78,483	66,942	74,761	66,942
Consultancy and contracts		51,893	42,630	46,791	38,442
Interest and other investment earnings		38,840	49,047	38,495	48,844
Dividends received		50,750	43,079	50,750	43,079
Other receipts		77,436	70,391	74,897	61,606
<b>Total cash received</b>		<b>878,278</b>	<b>723,738</b>	<b>866,570</b>	<b>710,562</b>
<b>Cash used</b>					
Payments to employees and pensioners		348,902	329,078	346,726	326,766
Direct investment expenses		814	9,147	814	9,147
Borrowing Expenses		8,250	8,595	8,250	8,595
Payments to services		264,972	276,979	256,214	267,887
<b>Total cash used</b>		<b>622,938</b>	<b>623,799</b>	<b>612,004</b>	<b>612,395</b>
<b>NET CASH FROM OPERATING ACTIVITIES</b>	31	<b>255,340</b>	<b>99,939</b>	<b>254,566</b>	<b>98,167</b>
<b>INVESTING ACTIVITIES</b>					
<b>Cash received</b>					
Proceeds from sales of property, plant and equipment		1,448	1,923	1,443	1,923
Loan repayments		-	5,623	-	5,623
Proceeds from sale and maturity of investments		1,085,902	801,281	1,085,609	801,271
<b>Total cash received</b>		<b>1,087,350</b>	<b>808,827</b>	<b>1,087,052</b>	<b>808,817</b>
<b>Cash used</b>					
Loan Advances		-	500	-	500
Purchase of property, plant and equipment		53,131	67,151	53,051	67,017
Purchase of investments		1,231,971	896,402	1,231,971	896,402
<b>Total cash used</b>		<b>1,285,102</b>	<b>964,053</b>	<b>1,285,022</b>	<b>963,919</b>
<b>NET CASH FROM INVESTING ACTIVITIES</b>		<b>(197,752)</b>	<b>(155,226)</b>	<b>(197,970)</b>	<b>(155,102)</b>
<b>FINANCING ACTIVITIES</b>					
Proceeds from borrowings		1,125	299	1,125	299
<b>NET CASH FROM FINANCING ACTIVITIES</b>		<b>1,125</b>	<b>299</b>	<b>1,125</b>	<b>299</b>
<b>NET INCREASE (DECREASE) IN CASH HELD</b>		<b>58,713</b>	<b>(54,988)</b>	<b>57,721</b>	<b>(56,636)</b>
Cash at 1 January	19	79,774	134,762	74,705	131,341
<b>CASH AT 31 DECEMBER</b>	19	<b>138,487</b>	<b>79,774</b>	<b>132,426</b>	<b>74,705</b>

The above statement should be read in conjunction with the accompanying notes.



THE AUSTRALIAN NATIONAL UNIVERSITY

SCHEDULE OF COMMITMENTS  
AS AT 31 DECEMBER 2006

	Consolidated		University	
	2006 \$'000	2005 \$'000	2006 \$'000	2005 \$'000
<b>BY TYPE</b>				
<b>Capital Commitments</b>				
Property, plant and equipment	80,309	20,754	80,309	20,754
<b>Total Capital Commitments</b>	<b>80,309</b>	<b>20,754</b>	<b>80,309</b>	<b>20,754</b>
<b>Other Commitments</b>				
Operating leases	544	691	-	-
Other commitments	8,437	10,931	8,437	10,931
<b>Total Other Commitments</b>	<b>8,981</b>	<b>11,622</b>	<b>8,437</b>	<b>10,931</b>
<b>Commitments Receivable</b>	<b>(8,068)</b>	<b>(2,880)</b>	<b>(8,068)</b>	<b>(2,880)</b>
<b>Net Commitments by Type</b>	<b>81,222</b>	<b>29,496</b>	<b>80,678</b>	<b>28,805</b>
<b>BY MATURITY</b>				
<b>All net commitments</b>				
One year or less	44,548	28,895	44,450	28,775
From one to five years	36,427	334	36,194	30
Greater than five years	247	267	34	-
<b>Net Commitments by Maturity</b>	<b>81,222</b>	<b>29,496</b>	<b>80,678</b>	<b>28,805</b>
<b>Operating/Finance lease commitments</b>				
One year or less	98	120	-	-
From one to five years	233	304	-	-
Greater than five years	213	267	-	-
<b>Net Operating Lease Commitments Payable</b>	<b>544</b>	<b>691</b>	<b>-</b>	<b>-</b>

NB: Commitments are GST inclusive where relevant

SCHEDULE OF CONTINGENCIES AS AT 31 DECEMBER 2006

	Notes	Consolidated		University	
		2006 \$'000	2005 \$'000	2006 \$'000	2005 \$'000
<b>CONTINGENT LIABILITIES</b>					
Guarantees		8,970	8,976	8,970	8,976
Claims for damages/costs		-	-	-	-
<b>TOTAL CONTINGENT LIABILITIES</b>	40	<b>8,970</b>	<b>8,976</b>	<b>8,970</b>	<b>8,976</b>
<b>CONTINGENT ASSETS</b>					
Claims for damages/costs		-	-	-	-
<b>TOTAL CONTINGENT ASSETS</b>	39	<b>-</b>	<b>-</b>	<b>-</b>	<b>-</b>

The above schedule should be read in conjunction with the accompanying notes.

**THE AUSTRALIAN NATIONAL UNIVERSITY**


---

**NOTES TO AND FORMING PART OF THE ACCOUNTS**

<b>Note</b>	<b>Contents</b>
1	Significant Accounting Policies
2	Australian Government Financial Assistance
3	State Government Financial Assistance
4	Fees and Charges
5	Investment Income
6	Consultancy and Contracts
7	Other Revenue
8	Gains on Revaluation
9	Employees
10	Services
11	Depreciation and Amortisation
12	Impairment Losses
13	Write-down of Assets
14	Borrowing Cost Expense
15	Gains/(Losses) On Disposal of Assets
16	Other Expenses
17	Income Tax Expense
18	Reserves
19	Cash and Cash Equivalents
20	Receivables
21	Investments
22	Land, Buildings and Infrastructure, Plant and Equipment
23	Inventories
24	Intangibles
25	Other Non-Financial Assets
26	Loans Payable
27	Employee Benefits
28	Suppliers
29	Other Provisions and Payables
30	Financial Instruments
31	Reconciliation of Operating Result to Net Cash Flows from Operations
32	Land
33	Remuneration of Officers
34	Directors' Remuneration
35	Remuneration of Auditors
36	Number of Employees
37	Superannuation Commitments
38	Cooperative Research Centres
39	Related Party Disclosures
40	Contingent Assets
41	Contingent Liabilities
42	Segment Information
43	Economic Dependency
44	Events Occurring After the Balance Sheet Date
45	Special Accounts
46	Joint Ventures
47	Acquittal of Australian Government Financial Assistance
48	Programs funded by grants received from United States of America Federal Government Agencies

**NOTES continued**

**1. SUMMARY OF SIGNIFICANT ACCOUNTING POLICIES**

The principal accounting policies adopted in the preparation of the financial report are set out below. These policies have been consistently applied to all years presented, unless otherwise stated. The financial report includes separate financial statements for The Australian National University ("the University") as an individual entity and the consolidated entity consisting of the University and its subsidiaries.

**1.1 Basis of preparation of the Financial Statements**

The financial statements are required by clause 1(b) of Schedule 1 to the Commonwealth and Companies Act 1997 and are a general purpose financial report.

The statements have been prepared in accordance with the Finance Minister's Orders (or FMO's, being the Requirements and Guidance for the Preparation of Financial Reports of Australian Government Entities for the reporting period ending on or after 01 July 2006), Australian Accounting Standards issued by the Australian Accounting Standards Board (AASB) that apply for the reporting period, interpretations issued by the AASB and Urgent Issues Group (UIG) that apply for the reporting period, and Financial Statements Guidelines for Higher Education Providers for 2006 issued in accordance with Section 19-10(2)(a) of the Higher Education Support Act issued by the Department of Education, Science and Training. Accounting Standards include Australian Equivalents to International Financial reporting Standards (AIFRS).

The Income Statement, Balance Sheet, and Statement of Recognised Income and Expense have been prepared on an accrual basis and are in accordance with historical cost convention, except for certain assets and liabilities, which as noted, are at fair value. Except where stated, no allowance is made for the effect of changing prices on the results for the financial position.

**Compliance with International Financial Reporting Standards**

The Financial Statements of the University complies with Australian Equivalents to International Financial Reporting Standards (AEIFRS), which include Australian Accounting Standards and AASB/UIG Interpretations except to the extent of the following:

Application of AEIFRS includes certain requirements specific to non-for-profit (NFP) entities that are inconsistent with IFRS requirements. The main NFP entity provisions, adapted by the parent entity, are in respect of the following.

- Accounting for Government grants. AASB 1004 Contributions requires contributions received or receivable to be recognised immediately as revenue when: the entity obtains control of the contribution or the right to receive the contribution; it is probable that the economic benefits comprising the contribution will flow to the entity; and the amount of the contribution can be measured reliably.
- Impairment of assets. Under AASB 136 Impairment of Assets, a NFP entity is entitled to recognise any impairment loss on a revalued asset directly against the available revaluation reserve in respect of the same class of asset.
- Assets received at nil or nominal value. Under AASB 102 Inventories, AASB 138 Intangible Assets, AASB 140 Investment Properties, and AASB 116 Property, Plant and Equipment, a NFP entity is entitled to recognise an asset acquired at no cost or nominal cost at its fair value as at the date of acquisition.

**Critical accounting estimates and judgements**

The preparation of financial statements in conformity with AIFRS requires the use of certain critical accounting estimates. It also requires management to exercise its judgement in the process of applying the University's accounting policies. No accounting assumptions or estimates have been identified that have a significant risk of causing a material adjustment to carrying amounts of assets and liabilities within the next accounting period.

**Functional and presentation currency**

The financial report is presented in Australian dollars and values are rounded to the nearest thousand dollars unless disclosure of the full amount is specifically required.

**THE AUSTRALIAN NATIONAL UNIVERSITY**

---

**NOTES continued****1. SUMMARY OF SIGNIFICANT ACCOUNTING POLICIES continued****1.1 Basis of preparation of the Financial Statements continued****Consolidation**

The consolidated financial report is prepared in accordance with AASB 127 Consolidated and Separate Financial Statements. The financial report includes the accounts of the parent entity, The Australian National University, and the accounts of the wholly and beneficially owned subsidiary company ANU Enterprise Pty Ltd incorporated in the Australian Capital Territory, including its wholly owned subsidiary, Australian Scientific Instruments Pty Ltd.

The balances and effects of transactions between controlled entities included in the consolidated financial report have been eliminated.

Separate financial reports are also prepared by the University's controlled entity and are audited by the Australian National Audit Office.

**1.2 Change in Accounting Policy***Investment Property*

The University has reassessed the disclosure of property held in Melbourne and have elected to recognise it under AASB 140 Investment Property. Under AASB 140 Investment Property, an investment property is defined as, property held to earn rentals or for capital appreciation or both rather than for (a) use in the production or supply of goods and services or administration purposes, or (b) sale in the ordinary course of business. Where appropriate comparative amounts have been recast.

**1.3 Revenue Recognition**

The University's operating revenue consists of Australian Government Financial Assistance including Higher Education Funding Act (HEFA), Higher Education Support Act (HESA), Higher Education Contribution Scheme (HECS), Higher Education Loan Programmes (HELP), Australian Research Council grants, ACT Government Financial Assistance, fees and charges, consultancy and contract research, investment income, and sales of goods and services.

The University treats operating grants and research income received from Australian Government entities and other funding bodies as income in the year of receipt.

Fees and charges are recognised as income in the year of receipt, except to the extent that fees and charges relate to courses to be held in future periods. Such income is treated as income in advance. Conversely, fees and charges relating to debtors are recognised as revenue in the year to which the prescribed course relates.

Interest income is recognised on a time proportionate basis that takes into account the effective yield on the relevant asset.

Dividend income is recognised as it is received.

Other investment revenue is recognised as it is received, with the exception of unrealised gains and losses which arise from the year end valuation process as described in Note 1.8.

Revenue from sales of goods and services is recognised as it is received.

**NOTES continued**

**1. SUMMARY OF SIGNIFICANT ACCOUNTING POLICIES continued**

**1.4 Goods and Services Tax**

The Australian National University and its subsidiary are exempt from all forms of taxation except fringe benefits tax and the good and services tax (GST). Revenues, expenses and assets are recognised net of the amount of GST, except where the amount of GST incurred is not recoverable from the Australian Taxation Office (ATO). In these circumstances the GST is recognised as part of the cost of acquisition of the asset or as part of the item of expense. Receivables and payables are stated with the amount of GST included. The net amount of GST recoverable from, or payable to, the ATO is included as a current asset or liability in the Balance Sheet. Cash flows are included in the Statement of Cash Flows on a gross basis. The GST components of cash flows arising from investing and financing activities which are recoverable from, or payable to, the ATO are classified as operating cash flows.

**1.5 Income Tax**

The University is exempt from income tax under Commonwealth legislation whilst the controlled entity, ANU Enterprise Pty Ltd is exempt under Section 50-5 of the Income Tax Assessment Act 1997.

Australian Scientific Instruments Pty Ltd is not exempt from income tax. The income tax expense for the period is the tax payable on the current period's taxable income based on the notional income tax rate adjusted by changes in deferred tax assets and liabilities attributable to temporary differences between the tax bases of the assets and liabilities and their carrying amounts in the financial statements, and to unused tax losses. Deferred tax assets and liabilities are recognised for temporary differences at the tax rates expected to apply when the assets are recovered or liabilities are settled, based on those tax rates which are enacted. The relevant tax rates are applied to the cumulative amounts of deductible and taxable temporary differences to measure the deferred tax asset or liability.

**1.6 Borrowing Expenses**

All borrowing costs are expensed as incurred.

**1.7 Cash and Cash Equivalents**

Available-for-sale financial assets with a maturity date of three months or less, from the date of deposit or issue and where there is an insignificant risk of a change in value, are re-classified to cash and cash equivalents.

For the purposes of the Statement of Cash Flows, cash and cash equivalents consist of cash and cash equivalents as defined above.

## THE AUSTRALIAN NATIONAL UNIVERSITY

## NOTES continued

## 1. SUMMARY OF SIGNIFICANT ACCOUNTING POLICIES continued

## 1.8 Investments

## 1.8.1 Investment Categories

University Funds are invested in accordance with Section 6(2) of the Australian National University Act 1991 (as amended) using guidelines approved by the Council of the University in the following categories:

Bank accepted bills  
 Capital Indexed Bonds  
 Convertible notes  
 Corporate bonds  
 Debentures  
 Exchanging instalment notes  
 Floating rate notes  
 Government and semi-government stocks and bonds  
 Listed hybrid securities  
 Listed property trusts  
 Managed investment funds  
 Negotiable certificates of deposit  
 Overseas managed investment funds  
 Promissory notes  
 Property trusts  
 Listed shares and share options  
 Short term money market deposits  
 Stapled securities  
 Term deposits  
 Transferable certificates of deposit  
 Unlisted shares and share options

## 1.8.2 Valuation

Investment assets of the University are stated at market value. Market value in relation to investments has been determined as:

Properties - all valuations are based on the capitalisation approach and a discounted cash flow analysis and were carried out by CB Richard Ellis (V) Pty Ltd. The University revalued investment land and buildings as at 31 December 2006;

Shares in public companies, stapled securities and convertible notes - the official market quotation price as listed by the Australian Stock Exchange at the close of business on 31 December 2006;

Fixed interest securities, such as semi government bonds - Calculated from yield provided by UBS Warburg Rate Sheet as at 31 December 2006; and

Managed investment funds and overseas managed investment funds - unit valuation supplied by the fund management groups as at 31 December 2006.

## 1.8.3 Recognition

Investments of the University, except for properties, are classified as 'Available-for-Sale' in accordance with AASB 139 Financial Instruments: Recognition and Measurement. Properties are classified as "Fair Value" in accordance with AASB 140 Investment Property. Movement in asset value is reflected directly in the Income Statement.

## 1.8.4 Impairment

If there is objective evidence that an impairment loss on an available-for-sale investment has been incurred, the amount of the loss is measured as the difference between the asset's carrying amount and the estimated recoverable amount of the asset. An asset's recoverable amount is the higher of its fair value less costs to sell and its value in use. When the carrying amount of an asset exceeds its recoverable amount, the asset is considered impaired and is written down to its recoverable amount with the impairment loss being recognised in the Income Statement.

## 1.9 Inventories

Inventories held for resale are valued at the lower of cost or net realisable value. Costs are assigned to inventories using last purchase cost including costs incurred in bringing each product to its present location and condition. Consumables in store are valued at weighted average unit cost. Equipment being constructed for onsale to third parties is held as work in progress at the cost of construction as at balance date.

NOTES continued

1. SUMMARY OF SIGNIFICANT ACCOUNTING POLICIES continued

1.10 Property, Plant and Equipment

1.10.1 Asset Recognition Threshold

Purchases of property, plant and equipment are recognised initially at cost in the Balance Sheet, except for purchases costing less than \$5,000, which are expensed in the year of acquisition (other than where they form part of similar items which are significant in total).

1.10.2 Depreciation

Depreciable property, plant and equipment assets are written off to their estimated residual value over their estimated remaining useful lives to the University using, in all cases, the straight line method of depreciation.

Depreciation rates applying to each class of depreciable are based on the following useful lives:

	<u>At Acquisition</u>	<u>At Revaluation</u>
	<u>Years</u>	<u>Years</u>
Buildings, Dwellings & Infrastructure	40	1 to 79
Plant and Equipment		
Motor vehicles	7	2 to 30
Computing equipment	5	1 to 17
Research / teaching equipment	7	1 to 44
Other	10	1 to 50

Heritage, cultural assets, and works of art are assessed as having an infinite useful life and are not depreciated. The aggregate amount of depreciation allocated for each class of assets during the reporting period is disclosed in Note 10.

1.10.3 Valuation

Plant and Equipment, with the exception of Artworks and Rare Library materials held as at 31 December 2005 are recorded at deemed cost less accumulated depreciation and any accumulated impairment losses. Plant and Equipment purchased subsequent to the adoption of deemed cost valuation are measured at cost. AON International Valuation Consultants assessed the carrying amounts of Plant and Equipment, with the exception of Artworks and Rare Library materials as at 31 December 2004 and advised there were no material differences in the carrying amounts of the assets and their fair values at that time and as such the carrying amounts were representative of fair value. The University has made the election under Section 39 of the FMOs and AASB 1 First Time Adoption of Australian Equivalent to International Reporting Standards, to use these fair values as their deemed cost as at 1 January 2005.

Land except for holdings in Fiji as identified in Note 31, has been brought to account. Substantially all of the land in the Australian Capital Territory and the Northern Territory was revalued in 2004. The valuation was completed by independent valuers, the Australian Valuation Office and Egan National Valuers. The valuation was on the basis of market value for existing use which is consistent with the establishment of the concept of deprival value for financial reporting purposes. These sites are provided free of charge by lease in perpetuity and the resultant valuation increment has been credited directly to the asset revaluation reserve.

Substantially all of the campus buildings and dwellings were revalued in 2006. The valuation was completed by an independent valuer, AON International Valuation Consultants. The Depreciated Replacement Cost approach was used to establish the Market Value for the Existing Use of the properties. The net revaluation increment was credited directly to the asset revaluation reserve. Campus buildings completed subsequent to the valuation are disclosed at cost. These assets are revalued every three years.

The initial costs of developing major administrative systems were initially captured and recognised within plant and equipment and are being amortised. Ongoing maintenance and development costs are expensed as incurred.

Rare library materials were revalued in 2004. The valuation was completed by independent qualified valuers, The Antique Bookshop and Curios.

Works of art were revalued in 2005. The valuation was completed by independent qualified valuers, AON International Valuation Consultants. Works of art purchased subsequent to the valuation are disclosed at cost.

## THE AUSTRALIAN NATIONAL UNIVERSITY

## NOTES continued

**1. SUMMARY OF SIGNIFICANT ACCOUNTING POLICIES continued****1.10 Property, Plant and Equipment continued****1.10.4 Impairment**

The carrying values of Land and Buildings, Infrastructure, Plant and Equipment, with the exception of Artworks and Rare Library materials are reviewed for impairment at each reporting date, with recoverable amount being estimated when events or changes in circumstances indicate that the carrying amount may be impaired.

An impairment exists when the carrying value of an asset or cash-generating unit exceeds its estimated recoverable amount. The asset or cash-generating unit is then written down to its recoverable amount.

Impairment losses are recognised in the income statement in the write-down of assets.

The University's Land and Buildings, Infrastructure, Plant and Equipment, with the exception of Artworks and Rare Library materials were reviewed by AON International Valuation Consultants in 2006 and no assets were identified as being impaired in any material nature.

**1.10.5 Derecognition and disposal**

An item of property, plant and equipment is derecognised upon disposal or when no further future economic benefits are expected from its use or disposal.

Any gain or loss arising on derecognition of the asset (calculated as the difference between the net disposal proceeds and the carrying amount of the asset) is included in the profit or loss in the year the asset is derecognised.

**1.11 Employee Entitlements**

The liability for long service leave is recognised and measured at the present value of the estimated future cash flows to be made in respect of all employees at 31 December 2006. In determining the present value of the liability, probabilities of taking long service leave, and attrition rates and pay increases through promotion and inflation have been taken into account. Accrued long service leave is treated as both a current and a non-current liability.

Liabilities for annual leave are recognised and measured based on staff leave entitlements at reporting date at current pay rates. Accrued annual leave is treated as a current liability.

The provision for annual leave reflects the value of total annual leave entitlements of all employees at 31 December 2006 and is recognised in accordance with AASB 119 Employee Benefits.

No provision has been made for sick leave as all sick leave is non-vesting and the average sick leave taken by employees is less than the annual entitlement for sick leave.

Provision is also made for separation and redundancy payments in circumstances where the University has formally identified positions as excess to requirements and a reliable estimate of the amount of the payments can be determined.

**1.12 Pensions and Other Post-Employment Benefits**

The University participates in a defined benefit plan (Commonwealth Superannuation Scheme) which requires contributions to be made to the separately administered fund. The cost of providing benefits under the defined benefit plan is determined separately using the projected unit credit actuarial valuation method. Actuarial gains and losses are recognised in retained earnings, in accordance with AASB119 Employee Benefits and FMOs, Section 44.3.

In addition the University contributes to the Superannuation Scheme for Australian Universities which is a defined benefit plan under Superannuation Law but, as a result of amendments to Clause 34 of UniSuper, a defined contribution plan under Accounting Standards AASB 119.

Details of the Scheme are outlined in Note 37.

**1.13 Foreign Currency Transactions**

Transactions denominated in a foreign currency are converted at the rate of exchange prevailing at the date of the transaction. At balance date, amounts receivable and payable in a foreign currency are translated at the exchange rate prevailing at that date and any exchange differences are brought to account in the Income Statement.



**NOTES continued**

**1. SUMMARY OF SIGNIFICANT ACCOUNTING POLICIES continued**

**1.14 Comparative figures**

Where necessary, comparative figures have been adjusted to conform with changes in presentation in these financial statements.

**1.15 Research and Development Costs**

Expenditure on research activities, undertaken with the prospect of gaining new scientific or technical knowledge and understanding, is recognised in the Income Statement when incurred.

Development activities involve a plan or design for the production of new or substantially improved products or processes. Development expenditure is capitalised only if development costs can be measured reliably, the product or process is technically and commercially feasible, future economic benefits are probable, and the University and/or its related entities intends to and has sufficient resources to complete development and to use or sell the asset. The expenditure capitalised includes the cost of materials, direct labour and overhead costs that are directly attributable to preparing the asset for its intended use. Other development expenditure is recognised in the Income Statement when incurred.

Capitalised development expenditure is measured at cost less accumulated amortisation and accumulated impairment losses.

**1.16 Intangible Assets**

Goodwill in relation to ANU Enterprise Pty Limited, relates to goodwill arising on the acquisition of a subsidiary and represents the excess of the cost of the investment over the carrying amount of the net assets acquired at the date of the exchange. Goodwill is measured at cost less accumulated impairment losses. The investment is reviewed for probable impairment on an annual basis.

Intellectual property developed internally has not been brought to account as it cannot be reasonably measured.

**1.17 Unrecognised Financial Liabilities**

Guarantees, not recognised in the Income Statement are disclosed in the Schedule of Contingencies. At the time of completion of the financial statements, there was no reason to believe that these guarantees would be called upon, and recognition of a liability was therefore not required.

**1.18 Joint Ventures**

**Interest in a Jointly Controlled Operation**

The University has an interest in a joint venture that is a jointly controlled operation. A joint venture is a contractual arrangement whereby two or more parties undertake an economic activity that is subject to joint control. A jointly controlled operation involves use of assets and other resources of the venturers rather than establishment of a separate entity. The proportionate interests in the assets, liabilities, income, and expenses of the joint venture operations have been incorporated in the financial report under the appropriate headings. Details of the interest in the joint venture are set out in note 46.

**Interest in Jointly Controlled Entity**

The University's investments in jointly controlled entities are accounted for using the equity method of accounting.

Under the equity method, the investment in the entity is carried in the Balance Sheet at cost plus post-acquisition changes in the University's share of net assets of the entity. After the application of the equity method, the University determines whether it is necessary to recognise any additional impairment loss with respect to the University's net investment in the entity. The Income Statement reflects the University's share of the results of operations of the entity. Details of the interest in the joint venture are set out in note 46.

**Interest in Co-operative Research Centres (CRC's)**

The University also has interests in a number of CRC joint venture operations, contributions to which are expensed. Details of the CRC joint ventures are provided in note 38.

## THE AUSTRALIAN NATIONAL UNIVERSITY

## NOTES continued

**1. SUMMARY OF SIGNIFICANT ACCOUNTING POLICIES continued****1.19 Provisions**

Provisions are recognised when the University has a present obligation (legal or constructive) as a result of a past event, it is probable that an outflow of resources embodying economic benefits will be required to settle the obligation and a reliable estimate can be made of the amount of the obligation.

When the University expects some or all of the provision to be reimbursed, the reimbursement is recognised as a separate asset but only when the reimbursement is virtually certain. The expense relating to any provision is presented in the Income Statement net of any reimbursement.

**1.20 Trade Creditors**

Trade creditors and accruals are recognised at their nominal amounts, being amounts at which the liabilities will be settled. Liabilities are recognised to the extent that the goods or services have been received.

**1.21 Impairment of Assets**

The University assesses at each reporting date whether there is an indication that an asset may be impaired. If any such indication exists, or when annual impairment testing for an asset is required, the University makes an estimate of the asset's recoverable amount. An asset's recoverable amount is the higher of its fair value less costs to sell and its value in use and is determined for an individual asset, unless the asset does not generate cash inflows that are largely independent of those from other assets or groups of assets and the asset's value in use cannot be estimated to be close to its fair value. In such cases the asset is tested for impairment as part of the cash-generating unit to which it belongs. When the carrying amount of an asset or cash-generating unit exceeds the recoverable amount, the asset or cash-generating unit is considered impaired and is written down to its recoverable amount.

In assessing value in use, the estimated future cash flows are discounted to their present value using a discount rate that reflects current market assessments of the time value of money and the risks specific to the asset. Impairment losses relating to continuing operations are recognised in the Income Statement in Impairment Loss expense unless the asset is carried at revalued amount (in which case the impairment loss is treated as a revaluation decrease).

An assessment is also made at each reporting date as to whether there is any indication that previously recognised impairment losses may no longer exist or may have decreased. If such indication exists, the recoverable amount is estimated. A previously recognised impairment loss is reversed only if there has been a change in the estimates used to determine the asset's recoverable amount since the last impairment loss was recognised. If that is the case the carrying amount of the asset is increased to its recoverable amount.

The increased amount cannot exceed the carrying amount that would have been determined, net of depreciation, had no impairment loss been recognised for the asset in prior years. Such reversal is recognised in the Income Statement unless the asset is carried at revalued amount, in which case the reversal is treated as a revaluation increase. After such a reversal the depreciation charge is adjusted in future periods to allocate the asset's revised carrying amount, less any residual value, on a systematic basis over the remaining useful life.

NOTES continued

**2. AUSTRALIAN GOVERNMENT FINANCIAL ASSISTANCE INCLUDING HIGHER EDUCATION FUNDING ACT (HEFA), HIGHER EDUCATION CONTRIBUTION SCHEME (HECS) - HELP AND OTHER AUSTRALIAN GOVERNMENT LOAN PROGRAMMES**

The information provided in this note is only relevant to the University - consolidated figures are not provided.

	Notes	University	
		2006 \$'000	2005 \$'000
<b>(a) Australian Government Grants Scheme and Other Grants</b>	47.1		
Commonwealth Grants Scheme #		46,893	42,721
Indigenous Support Fund		332	285
Equity Programmes +		143	169
Workplace Reform Programme		698	662
Workplace Productivity Programme		588	-
Collaboration & Structural Reform Programme		1,322	100
National Institutes Funding		163,603	157,880
Learning & Teaching Fund		2,060	-
Capital Development Pool		2,129	-
<b>Australian Government Grants Scheme - General</b>		<b>217,768</b>	<b>201,817</b>
<b>Australian Government Grants Scheme - Significant Item</b>			
Higher Education Special Projects Program	47.2	125,000	-
<b>Total Australian Government Grants Scheme and Other Grants</b>		<b>342,768</b>	<b>201,817</b>
<b>(b) Higher Education Loan Programmes</b>	47.3		
HECS - HELP		24,396	23,139
FEE - HELP		6,025	7,015
<b>Total Higher Education Loan Programmes</b>		<b>30,421</b>	<b>30,154</b>
<b>(c) Scholarships</b>	47.4		
Australian Postgraduate Awards		4,902	5,890
International Postgraduate Research Scholarships		1,112	1,205
Commonwealth Indigenous Scholarships		-	32
Commonwealth Education Costs Scholarships		227	134
Commonwealth Accommodation Scholarships		445	282
<b>Total Scholarships</b>		<b>6,686</b>	<b>7,543</b>
<b>(d) DEST - Research</b>	47.5		
Institutional Grants Scheme		17,664	16,668
Research Training Scheme		27,394	25,597
Systemic Infrastructure Initiative		14,554	28,258
Research Infrastructure Block Grants		17,249	14,487
<b>Total DEST - Research Grants</b>		<b>76,861</b>	<b>85,010</b>
<b>Total DEST</b>		<b>456,736</b>	<b>324,524</b>

# Includes the basic CGS grant amount, CGS-Regional Loading and CGS-Enabling Loading.

+ Includes amounts for Higher Education Equity Support Programme and Students with Disabilities Programme

## THE AUSTRALIAN NATIONAL UNIVERSITY

## NOTES continued

**2. AUSTRALIAN GOVERNMENT FINANCIAL ASSISTANCE INCLUDING HIGHER EDUCATION FUNDING ACT (HEFA), HIGHER EDUCATION CONTRIBUTION SCHEME (HECS) - HELP AND OTHER AUSTRALIAN GOVERNMENT LOAN PROGRAMMES continued**

The information provided in this note is only relevant to the University - consolidated figures are not provided.

	Notes	University	
		2006 \$'000	2005 \$'000
<b>(e) Australian Research Council</b>	47.6		
<b>(e)(i) Discovery</b>	47.6(a)		
Project (Large Grants)		35,083	35,724
Fellowships		-	723
Federation Fellowship		5,080	5,157
Indigenous Researchers Initiatives		-	1
Total Discovery		40,163	41,605
<b>(e)(ii) Linkages</b>	47.6(b)		
Special Research Initiatives		259	237
Infrastructure		3,322	3,698
International Researcher Exchange		197	213
Projects		7,002	6,756
Total Linkages		10,780	10,904
<b>(e)(iii) Networks and Centres</b>	47.6(c)		
Research Networks		1,332	1,307
Centres		8,997	4,318
Total Networks and Centres		10,329	5,625
<b>(f) Other Australian Government financial assistance:</b>			
Health and Aged Care		25,793	23,171
Industry, Science and Resources		2,355	2,881
Foreign Affairs and Trade		6,838	4,347
Agriculture, Fisheries and Forestry		1,768	1,510
Environment and Heritage		1,898	2,039
Communications, Information Technology & the Arts		2,815	2,910
Defence		605	401
Education, Science and Training		6,138	21,982
Prime Minister and Cabinet		52	-
Transport and Regional Services		-	22
Family and Community Services		1,387	1,090
Other		9,026	2,537
Total Other Australian Government financial assistance		58,675	62,890
<b>Total Australian Government financial assistance</b>		<b>576,683</b>	<b>445,548</b>
<b>Reconciliation</b>			
Australian Government grants [a+c+d+e+f]		421,262	415,394
Australian Government grants - Significant Item		125,000	-
HECS-HELP - Australian Government payments		24,396	23,139
Other Australian Government loan programmes [FEE-HELP]		6,025	7,015
<b>Total Australian Government financial assistance</b>		<b>576,683</b>	<b>445,548</b>
<b>(g) Australian Government Grants received - cash basis:</b>			
CGS and Other DEST Grants		217,768	201,817
Higher Education Special Projects Program		125,000	-
Higher Education Loan Programmes		30,421	30,154
Scholarships		6,686	7,543
DEST Research		76,861	85,010
ARC Grants		61,272	58,134
Other Australian Government Grants		53,220	59,134
<b>Total Australian Government Grants received - cash basis</b>		<b>571,228</b>	<b>441,792</b>
OS-Help (Net) *		(104)	121
<b>Total Australian Government funding received - cash basis</b>		<b>571,124</b>	<b>441,913</b>

\* OS-Help receipts from the Australian Government are not included in the Income Statement.

NOTES continued

	Consolidated		University	
	2006 \$'000	2005 \$'000	2006 \$'000	2005 \$'000
<b>3. STATE GOVERNMENT FINANCIAL ASSISTANCE</b>				
ACT Government grants were received by the University during the reporting period:				
Contributions	2,583	2,298	2,583	2,298
Total state government financial assistance	2,583	2,298	2,583	2,298
<b>4. FEES AND CHARGES</b>				
Fees and charges collected during the reporting period were:				
<b>Course fees and charges</b>				
Continuing education & conferences	9,131	7,110	5,351	3,418
Full fee paying international students	41,782	34,929	41,782	34,929
Full fee paying domestic students	5,082	2,781	5,082	2,781
Total course fees and charges	55,995	44,820	52,215	41,128
<b>Other fees and charges</b>				
General services fees	1,367	2,453	1,367	2,453
less disbursement of fees to student bodies	(1,510)	(2,830)	(1,510)	(2,830)
Parking fees	1,668	1,648	1,668	1,648
Rentals and hire facilities	4,960	5,593	5,018	5,644
Student accommodation	14,693	13,705	14,693	13,705
Other student charges and fines	1,449	1,157	1,449	1,157
Total other fees and charges	22,627	21,726	22,685	21,777
Total fees and charges	78,622	66,546	74,900	62,905
<b>5. INVESTMENT INCOME</b>				
Interest	26,447	26,807	26,102	26,604
Dividends	72,134	74,041	72,134	74,041
<b>Other investment revenue</b>				
Rentals from investment properties	1,096	6,304	1,096	6,304
<i>Investments unrealised during the period</i>				
Overseas managed investment funds	(2,864)	1,778	(2,864)	1,778
Listed shares and share options	-	49	-	49
<i>Investments realised during the period</i>				
Capital Indexed Bonds	-	501	-	501
Corporate bonds	(502)	(2,791)	(502)	(2,791)
Floating Rate Notes	25	-	25	-
Government and semi-government securities	-	(1,084)	-	(1,084)
Listed hybrid securities	(231)	233	(231)	233
Property & Listed Property Trusts	3,845	5,723	3,845	5,723
Overseas managed investment funds	-	-	-	-
Unlisted shares and share options	1,111	884	1,111	884
Listed shares and share options	5,965	(4,364)	5,672	(4,374)
	8,445	7,233	8,152	7,223
Direct investment expenditure	(814)	(9,147)	(814)	(9,147)
Total other investment income less direct investment expenditure	7,631	(1,914)	7,338	(1,924)
Total investment income	106,212	98,934	105,574	98,721

## THE AUSTRALIAN NATIONAL UNIVERSITY

## NOTES continued

	Consolidated		University	
	2006 \$'000	2005 \$'000	2006 \$'000	2005 \$'000
<b>6. CONSULTANCY AND CONTRACTS</b>				
Consultancy research	1,387	216	1,387	216
Contract research	41,507	32,015	38,741	30,947
Consultancy non-research	4,856	5,285	3,201	3,267
Contract non-research	2,628	3,818	2,628	3,818
Total consultancy and contracts	50,378	41,334	45,957	38,248
<b>7. OTHER REVENUE</b>				
Sundry income	32,396	10,266	28,494	4,993
Sales of goods and services	13,344	22,911	13,648	23,186
Workers compensation reimbursements	452	526	452	526
Scholarships and prizes	792	766	792	766
Donations and bequests	8,033	6,896	8,363	7,096
Total other revenue	55,017	41,365	51,749	36,567
<b>8. GAINS</b>				
Gains on revaluation of investment property	2,919	-	2,919	-
Total gains on revaluation of investment property	2,919	-	2,919	-
<b>9. EMPLOYEES</b>				
<i>Academic</i>				
Salaries	133,799	129,665	133,799	129,665
Superannuation Contributions	19,791	20,055	19,791	20,055
Long Service Leave Expense	3,934	5,099	3,934	5,099
Annual Leave	3,703	-	3,703	-
Total academic	161,227	154,819	161,227	154,819
<i>Non-Academic</i>				
Salaries <sup>1</sup>	127,641	128,956	125,948	127,143
Superannuation Contributions	19,374	20,014	19,145	19,766
Long Service Leave Expense	4,348	3,689	4,328	3,689
Annual Leave Expense	10,545	13,547	10,538	13,547
Total non-academic	161,908	166,206	159,959	164,145
<i>Commonwealth Superannuation Account</i>				
Pension payments	18,351	17,998	18,351	17,998
Employee superannuation entitlements expense	11,441	12,038	11,441	12,038
Total commonwealth superannuation account	29,792	30,036	29,792	30,036
Total employee expenses	352,927	351,061	350,978	349,000
1. Non academic staff salaries comprise:				
Administrative staff	84,309	83,432	82,616	81,619
Technical staff	23,672	25,106	23,672	25,106
Research officers	10,287	10,881	10,287	10,881
Service staff including security	5,811	6,060	5,811	6,060
Librarians	1,391	1,519	1,391	1,519
Trade staff	2,171	1,958	2,171	1,958
Total non academic staff salaries	127,641	128,956	125,948	127,143

THE AUSTRALIAN NATIONAL UNIVERSITY

NOTES continued

	Consolidated		University	
	2006 \$'000	2005 \$'000	2006 \$'000	2005 \$'000
<b>10. SERVICES</b>				
Site maintenance and servicing <sup>1</sup>	37,926	32,543	37,607	32,250
Consumables, research and training materials	86,604	91,199	79,550	83,940
Employee related expenses	24,378	24,846	24,168	24,634
Travel, conferences and fieldwork	24,157	22,939	23,979	22,884
Project Contributions	29,209	35,519	29,209	35,519
Scholarships	35,297	34,648	35,324	34,675
Miscellaneous operating expenses <sup>2</sup>	10,099	11,727	8,735	10,667
<b>Total cost of services</b>	<b>247,670</b>	<b>253,421</b>	<b>238,572</b>	<b>244,569</b>
1. Site maintenance and servicing includes:				
Building repairs and maintenance	16,130	12,418	16,087	12,374
Electricity and gas	8,093	7,337	7,988	7,246
Cleaning expenses	6,257	5,416	6,163	5,329
Municipality charges	2,104	2,254	2,076	2,232
Grounds maintenance	1,263	885	1,263	885
Other Site Maintenance and servicing expenses	4,079	4,233	4,030	4,184
<b>Total Site Maintenance and servicing</b>	<b>37,926</b>	<b>32,543</b>	<b>37,607</b>	<b>32,250</b>
2. Miscellaneous operating expenses includes:				
Advertising	1,977	1,833	1,977	1,832
Management fees	796	1,037	796	1,037
Membership - professional bodies	698	965	685	945
Staff development	797	880	755	881
Audit expenses, internal and external	432	418	358	361
Patent, copyright and royalties	862	357	894	458
Legal expenses, settlements	1,396	1,565	1,388	1,558
Other Miscellaneous operating expenses	3,141	4,672	1,882	3,595
<b>Total Miscellaneous operating expenses</b>	<b>10,099</b>	<b>11,727</b>	<b>8,735</b>	<b>10,667</b>
<b>11. DEPRECIATION AND AMORTISATION</b>				
Property at cost	2,038	1,354	2,038	1,354
Property at valuation	17,461	17,481	17,234	17,251
Plant, equipment and motor vehicles at cost	13,914	9,313	13,874	9,272
Plant, equipment and motor vehicles at deemed cost	9,212	10,914	9,212	10,914
License Agreement	18	18	18	18
<b>Total depreciation and amortisation</b>	<b>42,643</b>	<b>39,080</b>	<b>42,376</b>	<b>38,809</b>

## THE AUSTRALIAN NATIONAL UNIVERSITY

## NOTES continued

	Consolidated		University	
	2006 \$'000	2005 \$'000	2006 \$'000	2005 \$'000
<b>12. IMPAIRMENT LOSSES</b>				
Impairment losses - listed and unlisted shares and share options	2,119	3,425	2,119	3,425
Impairment losses - goodwill	9	9	-	-
Total impairment losses	<u>2,128</u>	<u>3,434</u>	<u>2,119</u>	<u>3,425</u>
<b>13. WRITE-DOWN OF ASSETS</b>				
Financial assets				
Receivables for goods and services - bad debts expense	105	230	105	242
Total write-down of assets	<u>105</u>	<u>230</u>	<u>105</u>	<u>242</u>
<b>14. BORROWING COST EXPENSE</b>				
Borrowing Cost Expense - Interest	8,246	7,180	8,246	7,180
Borrowing Cost Expense - Other Expenses	3	5	3	5
Total Borrowing Cost Expense	<u>8,249</u>	<u>7,185</u>	<u>8,249</u>	<u>7,185</u>
<b>15. LOSSES / (GAINS) ON DISPOSAL OF ASSETS</b>				
Loss on disposal of property, plant, equipment and motor vehicles	1,191	2,127	1,191	2,127
Gain on disposal of property, plant, equipment and motor vehicles	(314)	(197)	(309)	(197)
Net gains / (losses) on disposal of assets	<u>877</u>	<u>1,930</u>	<u>882</u>	<u>1,930</u>
<b>16. OTHER EXPENSES</b>				
Doubtful debts expense	(180)	254	(180)	254
Total other expenses	<u>(180)</u>	<u>254</u>	<u>(180)</u>	<u>254</u>
<b>17. INCOME TAX EXPENSE</b>				
<i>Recognised in the Income Statement</i>				
Current tax expense				
Current year	(149)	-	-	-
Deferred tax expense				
Origination and reversal of temporary differences	58	147	-	-
Total income tax expense	<u>(91)</u>	<u>147</u>	<u>-</u>	<u>-</u>



NOTES continued

18. RESERVES

18. (a) - Analysis of Equity

Consolidated	Notes	Accumulated Results		Total Asset Revaluation Reserves		Total Special Reserves		Total Equity	
		2006	2005	2006	2005	2006	2005	2006	2005
		\$'000	\$'000	\$'000	\$'000	\$'000	\$'000	\$'000	\$'000
<b>Total equity at the beginning of the financial year</b>		459,016	405,862	878,059	791,570	32,745	42,549	1,369,820	1,239,981
Operating surplus/(deficit) from ordinary activities		225,739	46,678	-	-	-	-	225,739	46,678
Net revaluation increase		-	-	214,336	106,420	-	-	214,336	106,420
Transfers to/(from) reserves - equity		61,790	-	(61,790)	-	-	-	-	-
Transfers to/(from) reserves		8,546	9,804	(23,046)	(19,931)	(8,546)	(9,804)	(23,046)	(19,931)
Adjustment direct to equity - income tax		(52)	79	-	-	-	-	(52)	79
Adjustment direct to equity - actuarial gains/(losses) on employee superannuation liability		23,707	(3,407)	-	-	-	-	23,707	(3,407)
<b>Total equity at the end of the financial year</b>	18	<b>778,746</b>	<b>459,016</b>	<b>1,007,559</b>	<b>878,059</b>	<b>24,199</b>	<b>32,745</b>	<b>1,810,504</b>	<b>1,369,820</b>

University		Accumulated Results		Total Asset Revaluation Reserves		Total Special Reserves		Total Equity	
		2006	2005	2006	2005	2006	2005	2006	2005
		\$'000	\$'000	\$'000	\$'000	\$'000	\$'000	\$'000	\$'000
<b>Total equity at the beginning of the financial year</b>		459,974	407,309	874,339	788,622	32,745	42,549	1,367,058	1,238,480
Operating surplus/(deficit) from ordinary activities		224,917	46,268	-	-	-	-	224,917	46,268
Net revaluation increase		-	-	213,206	105,648	-	-	213,206	105,648
Transfers to/(from) reserves - equity		61,790	-	(61,790)	-	-	-	-	-
Transfers to/(from) reserves		8,546	9,804	(23,046)	(19,931)	(8,546)	(9,804)	(23,046)	(19,931)
Adjustment direct to equity - actuarial gains/(losses) on employee superannuation liability		23,707	(3,407)	-	-	-	-	23,707	(3,407)
<b>Total equity at the end of the financial year</b>	18	<b>778,934</b>	<b>459,974</b>	<b>1,002,709</b>	<b>874,339</b>	<b>24,199</b>	<b>32,745</b>	<b>1,805,842</b>	<b>1,367,058</b>

## THE AUSTRALIAN NATIONAL UNIVERSITY

## NOTES continued

## 18. RESERVES continued

	Consolidated		University	
	2006 \$'000	2005 \$'000	2006 \$'000	2005 \$'000
<b>18. (b) - Reserves</b>				
<i>Asset Revaluation Reserves:</i>				
Asset revaluation - Property	795,945	647,235	791,170	643,568
Asset revaluation - Plant & Equipment	25,878	84,864	25,878	84,864
Asset revaluation - Investments	175,084	135,316	175,009	135,263
Asset revaluation - Crown Lease	4,760	4,760	4,760	4,760
Asset revaluation - Rare Library Materials	5,892	5,884	5,892	5,884
Total asset revaluation reserves	1,007,559	878,059	1,002,709	874,339
<i>Special Reserves:</i>				
Building	9,794	16,512	9,794	16,512
Equipment	8,386	10,645	8,386	10,645
Development and Restructuring	-	-	-	-
Self insurance of dwellings and buildings	5,980	5,538	5,980	5,538
Equipment Replacement	39	50	39	50
Total special reserves	24,199	32,745	24,199	32,745
Total reserves	1,031,758	910,804	1,026,908	907,084

## Summary of movements in reserves during the year ended 31 December 2006

Balance at beginning of year	910,804	834,119	907,084	831,171
Transfer (to)/from income	(23,046)	(19,931)	(23,046)	(19,931)
Increments/(decrements) on revaluation	214,336	106,420	213,206	105,648
Transfer (to)/from retained surpluses	(70,336)	(9,804)	(70,336)	(9,804)
Balance at end of year	1,031,758	910,804	1,026,908	907,084

## Movements in reserves

<i>Asset revaluation - Property</i>				
Balance at beginning of year	647,235	646,846	643,568	643,898
Increments/(decrements) on revaluation of				
Land	-	(330)	-	(330)
Buildings	148,710	719	147,602	-
Balance at end of year	795,945	647,235	791,170	643,568
<i>Asset revaluation - Plant and Equipment</i>				
Balance at beginning of year	84,864	66,034	84,864	66,034
Transfers to retained surpluses	(59,190)	-	(59,190)	-
Increments/(decrements) on revaluation	204	18,830	204	18,830
Balance at end of year	25,878	84,864	25,878	84,864
<i>Asset revaluation - Investments</i>				
Balance at beginning of year	135,316	68,050	135,263	68,050
Transfers to/(from) retained surpluses - equity	(2,600)	-	(2,600)	-
Transfer (to)/from income	(23,046)	(19,931)	(23,046)	(19,931)
Increments/(decrements) on revaluation	65,414	87,197	65,392	87,144
Balance at end of year	175,084	135,316	175,009	135,263

THE AUSTRALIAN NATIONAL UNIVERSITY

NOTES continued

18. RESERVES continued

	Consolidated		University	
	2006 \$'000	2005 \$'000	2006 \$'000	2005 \$'000
<b>18. (b) Reserves continued</b>				
<i>Asset revaluation - Crown Lease</i>				
Balance at beginning of year	4,760	4,760	4,760	4,760
Increments on revaluation	-	-	-	-
Balance at end of year	4,760	4,760	4,760	4,760
<i>Asset revaluation - Rare Library Materials</i>				
Balance at beginning of year	5,884	5,880	5,884	5,880
Increments on revaluation	8	4	8	4
Balance at end of year	5,892	5,884	5,892	5,884
<i>Building</i>				
Balance at beginning of year	16,512	20,316	16,512	20,316
Transfer from retained surpluses	3,430	2,341	3,430	2,341
Transfer to retained surpluses	(10,148)	(6,145)	(10,148)	(6,145)
Balance at end of year	9,794	16,512	9,794	16,512
<i>Equipment</i>				
Balance at beginning of year	10,645	10,729	10,645	10,729
Transfer from retained surpluses	2,199	1,293	2,199	1,293
Transfer to retained surpluses	(4,458)	(1,377)	(4,458)	(1,377)
Balance at end of year	8,386	10,645	8,386	10,645
<i>Development and Restructuring</i>				
Balance at beginning of year	-	5,405	-	5,405
Transfer from retained surpluses	-	300	-	300
Transfer to retained surpluses	-	(5,705)	-	(5,705)
Balance at end of year	-	-	-	-
<i>Self insurance of dwellings and buildings</i>				
Balance at beginning of year	5,538	5,997	5,538	5,997
Transfer from retained surpluses	1,939	781	1,939	781
Transfer to retained surpluses	(1,497)	(1,240)	(1,497)	(1,240)
Balance at end of year	5,980	5,538	5,980	5,538
<i>Equipment Replacement</i>				
Balance at beginning of year	50	102	50	102
Transfer from retained surpluses	(11)	(52)	(11)	(52)
Balance at end of year	39	50	39	50

## THE AUSTRALIAN NATIONAL UNIVERSITY

## NOTES continued

	Consolidated		University	
	2006 \$'000	2005 \$'000	2006 \$'000	2005 \$'000
<b>19. CASH AND CASH EQUIVALENTS</b>				
Cash on hand	38	38	38	38
Bank	14,747	16,659	13,265	15,919
Deposits at call	123,702	63,077	119,123	58,748
	<u>138,487</u>	<u>79,774</u>	<u>132,426</u>	<u>74,705</u>
<b>Reconciliation of Cash</b>				
Cash at end of the financial year as shown in the statement of cash flow	<u>138,487</u>	<u>79,774</u>	<u>132,426</u>	<u>74,705</u>
Total University cash available includes \$24,199,000 (2005 \$32,745,000) which has been retained for future expenditure as outlined in the Special Reserves (see Note 18).				
<b>20. RECEIVABLES</b>				
<i>Current receivables:</i>				
Goods and services	31,493	27,245	22,199	20,490
Less: Provision for doubtful debts	(1,490)	(1,684)	(1,490)	(1,670)
	<u>30,003</u>	<u>25,561</u>	<u>20,709</u>	<u>18,820</u>
Income due	3,547	3,221	3,547	3,221
Interest receivable	3,905	3,704	3,905	3,704
GST receivable	584	1,835	584	1,835
	<u>38,039</u>	<u>34,321</u>	<u>28,745</u>	<u>27,580</u>
<i>Non-current receivables:</i>				
Loans	1,500	1,500	1,500	1,500
	<u>1,500</u>	<u>1,500</u>	<u>1,500</u>	<u>1,500</u>
Total non-current receivables	<u>1,500</u>	<u>1,500</u>	<u>1,500</u>	<u>1,500</u>
Total receivables	<u>39,539</u>	<u>35,821</u>	<u>30,245</u>	<u>29,080</u>
<i>Ageing of receivables (gross):</i>				
Not overdue	33,547	29,374	24,253	22,619
Less than 30 days overdue	2,603	1,337	2,603	1,337
30 to 60 days overdue	914	1,011	914	1,011
60 to 90 days overdue	1,288	1,170	1,288	1,170
More than 90 days	2,677	4,613	2,677	4,613
	<u>41,029</u>	<u>37,505</u>	<u>31,735</u>	<u>30,750</u>

THE AUSTRALIAN NATIONAL UNIVERSITY

NOTES continued

	Consolidated		University	
	2006 \$'000	2005 \$'000	2006 \$'000	2005 \$'000
<b>21. INVESTMENTS</b>				
<i>Current investments:</i>				
<i>Investments at valuation (see Note 1.8)</i>				
<i>Listed Securities:</i>				
Corporate bonds	13,487	23,230	13,487	23,230
Debentures	2,000	4,000	2,000	4,000
Government and semi-government securities	5,055	-	5,055	-
Listed hybrid securities	7,287	11,873	7,287	11,873
Transferable certificate of deposits	20,579	17,815	20,579	17,815
Floating rate notes	12,996	12,287	12,996	12,287
<b>Total current investments</b>	<b>61,404</b>	<b>69,205</b>	<b>61,404</b>	<b>69,205</b>
<i>Non-current investments:</i>				
<i>Investments at valuation (see Note 1.8)</i>				
<i>Listed Securities:</i>				
Shares and share options	435,344	381,068	435,253	380,999
Provision for impairment - listed shares and share options	(746)	-	(746)	-
Listed shares and share options - after impairment	434,598	381,068	434,507	380,999
Convertible notes	8,336	6,201	8,336	6,201
Corporate bonds	35,646	54,965	35,646	54,965
Floating rate notes	189,799	170,235	189,799	170,235
Government and semi-government securities	1,034	6,282	1,034	6,282
Listed hybrid securities	62,555	18,040	62,555	18,040
Managed investment funds	170,076	103,431	170,076	103,431
Overseas managed investment funds	42,115	37,679	42,115	37,679
Property trusts	61,916	34,828	61,916	34,828
<b>Total listed securities</b>	<b>1,006,075</b>	<b>812,729</b>	<b>1,005,984</b>	<b>812,660</b>
<i>Unlisted Securities:</i>				
Unlisted shares and share options	37,920	20,906	37,920	20,906
Provision for impairment - unlisted shares and share options	(2,545)	(3,425)	(2,873)	(3,425)
Unlisted shares and share options - after impairment	35,375	17,481	35,047	17,481
Interests in related parties	515	178	7,715	7,378
<b>Total unlisted securities</b>	<b>35,890</b>	<b>17,659</b>	<b>42,762</b>	<b>24,859</b>
<b>Total non-current investments</b>	<b>1,041,965</b>	<b>830,388</b>	<b>1,048,746</b>	<b>837,519</b>
<b>Total investments</b>	<b>1,103,369</b>	<b>899,593</b>	<b>1,110,150</b>	<b>906,724</b>

## THE AUSTRALIAN NATIONAL UNIVERSITY

## NOTES continued

	Consolidated		University	
	2006 \$'000	2005 \$'000	2006 \$'000	2005 \$'000
<b>22. LAND, BUILDINGS AND INFRASTRUCTURE, PLANT AND EQUIPMENT</b>				
<i>Land, Buildings and Infrastructure</i>				
Buildings under construction	7,439	35,513	7,439	35,513
Land at Cost	1,550	884	1,550	884
Dwellings at cost	-	53	-	53
Accumulated depreciation	-	(1)	-	(1)
Campus buildings at cost	47,943	80,750	47,943	80,750
Accumulated depreciation	(124)	(1,353)	(124)	(1,353)
Land, buildings and infrastructure at cost	49,369	80,333	49,369	80,333
Site infrastructure at valuation	25,328	21,276	25,328	21,276
Accumulated depreciation	-	(1,542)	-	(1,542)
Land at valuation	43,528	43,528	43,528	43,528
Dwellings at valuation	15,320	13,480	15,320	13,480
Accumulated depreciation	-	(538)	-	(538)
Campus buildings at valuation	911,092	732,099	902,742	724,659
Accumulated depreciation	(19)	(31,343)	(19)	(31,343)
Land, buildings and infrastructure at valuation	995,249	776,960	986,899	769,520
Crown Lease at valuation	6,200	6,200	6,200	6,200
Accumulated amortisation	(1,127)	(564)	(1,127)	(564)
Amortised crown lease	5,073	5,636	5,073	5,636
<b>Total land, buildings and infrastructure</b>	<b>1,057,130</b>	<b>898,442</b>	<b>1,048,780</b>	<b>891,002</b>
<i>Plant and Equipment</i>				
Plant and equipment under construction	11,255	6,424	11,255	6,424
Plant, equipment and motor vehicles at cost	97,368	81,556	95,601	79,816
Accumulated depreciation	(34,383)	(21,635)	(32,795)	(20,065)
Plant, equipment and motor vehicles at deemed cost	65,660	66,656	65,660	66,656
Accumulated depreciation	(18,937)	(10,141)	(18,937)	(10,141)
	109,708	116,436	109,529	116,266
Works of art at cost	60	16	60	16
Works of art at valuation	29,143	28,931	29,143	28,931
	29,203	28,947	29,203	28,947
Rare library materials at valuation	8,177	8,163	8,177	8,163
	8,177	8,163	8,177	8,163
<b>Total plant and equipment</b>	<b>158,343</b>	<b>159,970</b>	<b>158,164</b>	<b>159,800</b>
<b>Total land, buildings and infrastructure, plant and equipment</b>	<b>1,215,473</b>	<b>1,058,412</b>	<b>1,206,944</b>	<b>1,050,802</b>

NOTES continued

22. LAND, BUILDINGS AND INFRASTRUCTURE, PLANT AND EQUIPMENT continued

Table A: Reconciliation of the opening and closing balances of land, buildings and infrastructure, plant and equipment (Consolidated only)

	Land \$'000	Buildings \$'000	Infrastructure & Crown Lease \$'000	Total land, buildings and infrastructure \$'000	Plant and equipment \$'000	Total \$'000
<b>Gross value</b>						
As at 1 January 2006	44,412	826,382	62,989	933,783	191,746	1,125,529
Additions	666	56,856	25,717	83,239	24,232	107,471
Revaluations	-	91,134	4,052	95,186	204	95,390
Disposals	-	(17)	(53,791)	(53,808)	(4,519)	(58,327)
As at 31 December 2006	45,078	974,355	38,967	1,058,400	211,663	1,270,063
<b>Accumulated depreciation / amortisation</b>						
As at 1 January 2006	-	33,235	2,106	35,341	31,776	67,117
Charge for the reporting period	-	18,171	1,328	19,499	23,126	42,625
Revaluations	-	(51,263)	(2,307)	(53,570)	(1,582)	(55,152)
As at 31 December 2006	-	143	1,127	1,270	53,320	54,590
Net book value as at 31 December 2006	45,078	974,212	37,840	1,057,130	158,343	1,215,473
Net book value as at 1 January 2006	44,412	793,147	60,883	898,442	159,970	1,058,412

Table B: Reconciliation of the opening and closing balances of land, buildings and infrastructure, plant and equipment (University only)

Item	Land \$'000	Buildings \$'000	Infrastructure & Crown Lease \$'000	Total land, buildings and infrastructure \$'000	Plant and equipment \$'000	Total \$'000
<b>Gross value</b>						
As at 1 January 2006	44,412	818,942	62,989	926,343	190,006	1,116,349
Additions	666	56,856	25,717	83,239	24,156	107,395
Revaluations	-	90,224	4,052	94,276	204	94,480
Disposals/Write offs	-	(17)	(53,791)	(53,808)	(4,470)	(58,278)
As at 31 December 2006	45,078	966,005	38,967	1,050,050	209,896	1,259,946
<b>Accumulated depreciation / amortisation</b>						
As at 1 January 2006	-	33,235	2,106	35,341	30,206	65,547
Charge for the reporting period	-	17,944	1,328	19,272	23,086	42,358
Revaluations	-	(51,036)	(2,307)	(53,343)	(1,560)	(54,903)
As at 31 December 2006	-	143	1,127	1,270	51,732	53,002
Net book value as at 31 December 2006	45,078	965,862	37,840	1,048,780	158,164	1,206,944
Net book value as at 1 January 2006	44,412	785,707	60,883	891,002	159,800	1,050,802

## THE AUSTRALIAN NATIONAL UNIVERSITY

## NOTES continued

## 22. LAND, BUILDINGS AND INFRASTRUCTURE, PLANT AND EQUIPMENT continued

Table C: Reconciliation of the opening and closing balances of land, buildings and infrastructure, plant and equipment at valuation (Consolidated only)

Item	Land \$'000	Buildings \$'000	Infrastructure \$'000	Total land, buildings and infrastructure \$'000	Plant and equipment \$'000	Total \$'000
<b>Gross value</b>						
As at 1 January 2006	43,528	745,579	27,476	816,583	37,094	853,677
Additions	-	-	-	-	55	55
Revaluations	-	180,850	4,052	184,902	204	185,106
Disposals/Write offs	-	(17)	-	(17)	(33)	(50)
As at 31 December 2006	43,528	926,412	31,528	1,001,468	37,320	1,038,788
<b>Accumulated depreciation / amortisation</b>						
As at 1 January 2006	-	31,881	2,106	33,987	-	33,987
Charge for the reporting period	-	16,133	1,328	17,461	-	17,461
Revaluations	-	(47,995)	(2,307)	(50,302)	-	(50,302)
As at 31 December 2006	-	19	1,127	1,146	-	1,146
Net book value as at 31 December 2006	43,528	926,393	30,401	1,000,322	37,320	1,037,642
Net book value as at 1 January 2006	43,528	713,698	25,370	782,596	37,094	819,690

Table D: Assets under construction (Consolidated only)

Item	Land \$'000	Buildings \$'000	Infrastructure \$'000	Total land, buildings and infrastructure \$'000	Plant and equipment \$'000	Total \$'000
As at 31 December 2006						
Gross value	-	7,439	-	7,439	11,255	18,694
Accumulated depreciation/amortisation	-	-	-	-	-	-
Net book value	-	7,439	-	7,439	11,255	18,694
As at 31 December 2005						
Gross value	-	35,513	-	35,513	6,424	41,937
Accumulated depreciation/amortisation	-	-	-	-	-	-
Net book value	-	35,513	-	35,513	6,424	41,937



THE AUSTRALIAN NATIONAL UNIVERSITY

NOTES continued

	Consolidated		University	
	2006 \$'000	2005 \$'000	2006 \$'000	2005 \$'000
<b>23. INVENTORIES</b>				
Inventory held for sale	180	148	180	148
Consumables in store	892	966	892	966
WIP equipment for sale	8,066	6,106	-	862
	<u>9,138</u>	<u>7,220</u>	<u>1,072</u>	<u>1,976</u>
<b>24. INTANGIBLES</b>				
<i>Current assets:</i>				
Goodwill on acquisition	180	181	-	-
Impairment of goodwill	(94)	(85)	-	-
Total current assets	<u>86</u>	<u>96</u>	<u>-</u>	<u>-</u>
<b>25. OTHER NON-FINANCIAL ASSETS</b>				
<i>Current assets:</i>				
Advance payments and prepaid expenditure	14,786	12,555	14,768	12,536
Licence Agreement	106	87	106	87
Amortisation of Licence Agreement	(87)	(68)	(87)	(68)
Total current assets	<u>14,805</u>	<u>12,574</u>	<u>14,787</u>	<u>12,555</u>
<i>Non-current assets:</i>				
Properties	15,600	11,800	15,600	11,800
Licence Agreement	334	353	334	353
Total non-current assets	<u>15,934</u>	<u>12,153</u>	<u>15,934</u>	<u>12,153</u>
Total other non-financial assets	<u>30,739</u>	<u>24,727</u>	<u>30,721</u>	<u>24,708</u>
<b>26. SUPPLIERS</b>				
Suppliers	21,748	18,753	21,101	18,299
Total payables to suppliers	<u>21,748</u>	<u>18,753</u>	<u>21,101</u>	<u>18,299</u>
<b>27. OTHER PAYABLES</b>				
<i>Other current payables:</i>				
Income in advance	14,048	11,887	5,564	5,578
Other creditors	6,224	4,623	6,224	4,623
Income tax expense	(149)	-	-	-
Deferred tax liability	126	68	-	-
Construction project liability	9,002	5,971	-	-
Incomplete project revenue	1,798	1,322	-	-
Total other current payables	<u>31,049</u>	<u>23,871</u>	<u>11,788</u>	<u>10,201</u>
<i>Other non-current payables:</i>				
Income in advance	250	334	-	-
Total other non-current payables	<u>250</u>	<u>334</u>	<u>-</u>	<u>-</u>
Total other payables	<u>31,299</u>	<u>24,205</u>	<u>11,788</u>	<u>10,201</u>

## THE AUSTRALIAN NATIONAL UNIVERSITY

## NOTES continued

	Consolidated		University	
	2006 \$'000	2005 \$'000	2006 \$'000	2005 \$'000
<b>28. INTEREST BEARING LIABILITIES</b>				
<i>Current liability:</i>				
Indexed Annuity Bonds	420	(1,123)	420	(1,123)
Total current liabilities	420	(1,123)	420	(1,123)
<i>Non-current liability:</i>				
Indexed Annuity Bonds	115,726	116,144	115,726	116,144
Total non-current liabilities	115,726	116,144	115,726	116,144
Total interest bearing liabilities	116,146	115,021	116,146	115,021

The University has issued Indexed Annuity Bonds in October 2004 with a maturity of 25 years. The loan is repayable by quarterly instalments of principal and interest that are indexed in alignment with the Australian Consumer Price Index (CPI). The real yield payable on the Bonds is 3.235% with an effective CPI base of 30 September 2004.

**29. EMPLOYEE BENEFITS**

<i>Current liability:</i>				
Accrued salary and related expenses	4,536	5,071	4,536	5,071
Superannuation levy	337	329	337	329
Employee redundancy and early retirement scheme	1,282	9,538	1,282	9,538
Employee superannuation entitlements	18,351	17,998	18,351	17,998
Annual Leave entitlements	20,562	19,811	20,283	19,505
Long Service Leave entitlements	41,262	40,837	41,149	40,765
Total current liability	86,330	93,584	85,938	93,206
<i>Non-current liability:</i>				
Employee redundancy and early retirement scheme	-	802	-	802
Employee superannuation entitlements	456,466	469,085	456,466	469,085
Long Service Leave entitlements	14,338	14,373	14,277	14,323
Total non-current liability	470,804	484,260	470,743	484,210
Total provisions and payables to employees	557,134	577,844	556,681	577,416

NOTES continued

30. FINANCIAL INSTRUMENTS

30.1 Terms, Conditions and Accounting Policies

Financial Instrument	Notes	Accounting Policies and Methods	Nature of underlying instrument
<b>Financial assets</b>		Financial assets are recognised when control over future economic benefits is established and the amount of the benefit can be reliably measured.	
Cash at bank, deposits at call, bank bills and negotiable certificates of deposit.	19	Cash at bank and deposits are recognised at their nominal amounts. Interest is credited to revenue as it accrues.	Temporarily surplus funds, mainly from fortnightly drawdowns of funding payments and surplus investment funds, are placed on deposit at call with authorised banks. Interest is earned on the daily balance at the prevailing daily rate for money on call and is paid at month end.
Receivables for goods & services	20	Receivables are recognised at the nominal amounts due less any provision for bad and doubtful debts. Provisions are made when collection of the debt is judged to be less rather than more likely.	The University's credit terms are net 30 days. Settlement periods for entities consolidated range from 14-60 days.
Government and semi-government securities (G&SGS) and corporate bonds	21	Commonwealth, State Government and Corporate Bonds are recognised at market value. Interest is credited to revenue as it accrues.	G&SGS have terms of up to 15 years. G&SGS are guaranteed by the issuing Government and are traded in active markets. Coupons are usually received on the anniversary of the maturity date and six months from the anniversary date. Investment in corporate bonds is restricted to debt securities issued by authorised banks and companies with an A+ credit rating. Terms up to 10 years.
Capital Indexed Bonds	21	Capital Indexed Bonds are recognised at market value. Interest is credited to revenue as it accrues.	Investment in Capital Indexed Bonds is restricted to debt securities issued by authorised banks and companies with an A+ credit rating. Terms up to 20 years. Coupons are usually received on the anniversary of the maturity date and quarterly from the anniversary date.
Debentures	21	The debentures held are recognised at market value. Interest is recognised as it accrues.	Investment in debentures is restricted to companies with an A+ credit rating and affiliated with an authorised bank. Interest is paid quarterly or half yearly.
Transferable certificates of deposits (TCDs)	21	TCDs are recognised at market value. Interest is accrued as it is earned.	TCDs are purchased from authorised banks. Terms are variable but normally less than 5 years.
Overseas managed investment funds and managed investment funds	21	Managed investment funds are carried at the market value of the underlying asset. Converted to AUD at the prevailing spot rate.	Managed funds comprise assets made up of listed companies on world stock markets, foreign cash balances and cash in Australian dollars.
Convertible notes	21	Convertible notes are quoted on the Australian Stock Exchange and are valued at the last sale price on the day of valuation. Movements in these values between reporting dates are accounted for in accordance with the provisions of AASB 5 "Non-current Assets Held for Sale and Discontinued Operations".	Convertible notes convert to ordinary shares on a predetermined date.

## THE AUSTRALIAN NATIONAL UNIVERSITY

## NOTES continued

## 30. FINANCIAL INSTRUMENTS continued

## 30.1 Terms, Conditions and Accounting Policies continued

Listed property trusts	21	Listed property trusts held by the University are quoted on the Australian Stock Exchange and are valued at the last sale price.	Listed property trusts have underlying assets comprising physical properties and cash balances. Distributions are received in cash.
Shares in listed companies	21	These shares are carried at their quoted last sale price. Movements in these values between reporting dates are accounted for in accordance with the provisions of AASB 5 "Non-current Assets Held for Sale and Discontinued Operations". Dividend income is recognised when dividends are received.	A mixture of ordinary and preference shares are held.
Shares in unlisted companies	21	These shares are carried at their quoted last sale price. These shares are not traded in active markets. Movements in these values between reporting dates are accounted for in accordance with the provisions of AASB 5 "Non-current Assets Held for Sale and Discontinued Operations". Dividend income is recognised when dividends are received.	A mixture of ordinary and preference shares are held.
Floating rate notes (FRNs)	21	Carried at face value plus accrued interest from last coupon payment date.	Income quarterly. Coupon set quarterly at a premium to 90 day Bank Bill Swap Reference Rate. Fixed term. Investment is restricted to FRNs issued by authorised banks or companies with A+ credit ratings.
Listed hybrid securities	21	Listed hybrid securities are recognised at market value. Interest or income is credited to revenue as it accrues.	Investment is restricted to authorised banks and companies with a BBB- credit rating or better with terms of up to 10 years. Coupons/dividends are received on anniversary of maturity and quarterly from anniversary date. Coupons/dividends can also be received each six months.
Loans receivable	20	Third party loans are carried at nominal amounts.	Repayment of principal and interest on loans have varying terms and conditions.
<b>Financial liabilities</b>		Financial liabilities are recognised when a present obligation to another party is entered into and the amount of the liability can be reliably measured.	
Trade creditors	26	Creditors and accruals are recognised at their nominal amounts, being the amounts at which the liabilities will be settled. Liabilities are recognised to the extent that the goods or services have been received (and irrespective of having been invoiced).	Settlement is usually made net 30 days.
Loans Payable	28	Loans payable are recognised at their nominal amounts, being the amounts at which the liabilities will be settled.	Repayments are quarterly, based upon the indexed annuity bond repayment schedule applicable as and when the repayments fall due.

THE AUSTRALIAN NATIONAL UNIVERSITY

NOTES continued

30. FINANCIAL INSTRUMENTS continued

30.2 Interest, Currency, Market, Cash Flow and Credit Risk

2006	Less than 1 year \$'000	Between 1 and 5 years \$'000	Greater than 5 years \$'000	Total carrying amount \$'000	Fair Value \$'000	Weighted average interest rate %
<b>FINANCIAL ASSETS</b>						
<i>Interest Rate Risk</i>						
Corporate bonds	13,487	35,646	-	49,133	49,133	5.95
Listed hybrid securities	7,287	33,678	28,877	69,842	69,842	7.32
Debentures	2,000	-	-	2,000	2,000	6.39
Government and semi-government bonds	5,055	1,034	-	6,089	6,089	7.92
Transferable certificates of deposit	20,579	-	-	20,579	20,579	6.43
<i>Currency Risk</i>						
Overseas managed investment funds	-	-	42,115	42,115	42,115	n/a
<i>Market Risk</i>						
Convertible notes	-	-	8,336	8,336	8,336	
Managed investment funds *	-	-	170,076	170,076	170,076	n/a
Listed property trusts	-	-	61,916	61,916	61,916	n/a
Listed shares and share options	-	-	434,598	434,598	434,598	n/a
Unlisted shares and share options	-	-	35,375	35,375	35,375	n/a
Interests in related parties	-	-	515	515	515	n/a
<i>Cash Flow Risk</i>						
Cash	138,487	-	-	138,487	138,487	5.63
Floating rate notes	12,996	149,565	40,234	202,795	202,795	6.69
<i>Credit Risk</i>						
Receivables	38,039	-	-	38,039	38,039	n/a
Loans Receivable	-	1,500	-	1,500	1,500	3.67
<b>Total Financial Assets</b>	<b>237,930</b>	<b>221,423</b>	<b>822,042</b>	<b>1,281,395</b>	<b>1,281,395</b>	
<b>FINANCIAL LIABILITIES</b>						
<i>Credit Risk</i>						
Trade creditors	21,748	-	-	21,748	21,748	n/a
Loans Payable	420	6,006	109,720	116,146	116,146	7.09
<b>Total Financial Liabilities</b>	<b>22,168</b>	<b>6,006</b>	<b>109,720</b>	<b>137,894</b>	<b>137,894</b>	

The information provided has been prepared for consolidated activity only.

\* These funds are also subject to Currency Risk due to holdings in foreign investments.

*Interest rate risk* is the risk that the realisable value of a financial instrument will fluctuate due to changes in market interest rates.

*Currency risk* is the risk that the value of a financial instrument will fluctuate due to changes in foreign exchange rates.

*Market risk* is the risk that the value of a financial instrument will fluctuate as a result of changes in market prices.

*Cash flow risk* is the risk that realisable future cash flows associated with a monetary financial instrument will fluctuate in amount.

*Credit risk* is the risk that one party to a financial instrument will fail to discharge an obligation and cause the other party to incur a financial loss.

The University's maximum exposure to credit risk at 31 December 2006 in relation to each class of recognised financial assets is the carrying amount of those assets as indicated in the Balance Sheet. The University has no significant exposure to any concentration of credit risk. All figures for credit risk referred to do not take into account the value of any collateral or other security.

## THE AUSTRALIAN NATIONAL UNIVERSITY

## NOTES continued

## 30. FINANCIAL INSTRUMENTS continued

## 30.3 Interest, Currency, Market, Cash Flow and Credit Risk

2005	Less than 1 year \$'000	Between 1 and 5 years \$'000	Greater than 5 years \$'000	Total carrying amount \$'000	Fair Value \$'000	Weighted average interest rate %
<b>FINANCIAL ASSETS</b>						
<i>Interest Rate Risk</i>						
Corporate bonds	23,230	49,645	5,320	78,195	78,195	6.80
Listed Hybrid Securities	11,873	18,040	-	29,913	29,913	5.95
Debentures	4,000	-	-	4,000	4,000	6.00
Government and semi-government bonds	-	6,282	-	6,282	6,282	7.91
Capital Indexed Bonds	-	-	-	-	-	0.00
Transferable certificates of deposit	17,815	-	-	17,815	17,815	5.64
<i>Currency Risk</i>						
Overseas managed investment funds	-	-	37,679	37,679	37,679	n/a
<i>Market Risk</i>						
Convertible notes	-	-	6,201	6,201	6,201	5.25
Managed investment funds *	-	-	103,431	103,431	103,431	n/a
Property trusts	-	-	34,828	34,828	34,828	n/a
Listed Shares and share options	-	-	381,068	381,068	381,068	n/a
Unlisted shares and share options	-	-	17,481	17,481	17,481	n/a
Interests in related parties	-	-	178	178	178	n/a
<i>Cash Flow Risk</i>						
Cash	79,774	-	-	79,774	79,774	5.63
Floating rate notes	12,287	137,235	33,000	182,522	182,522	6.22
<i>Credit Risk</i>						
Receivables	34,321	-	-	34,321	34,321	n/a
Loans Receivable	-	1,500	-	1,500	1,500	3.59
<b>Total Financial Assets</b>	<b>183,300</b>	<b>212,702</b>	<b>619,186</b>	<b>1,015,188</b>	<b>1,015,188</b>	
<b>FINANCIAL LIABILITIES</b>						
<i>Credit Risk</i>						
Trade creditors	18,753	-	-	18,753	18,753	n/a
Loans Payable	(1,120)	(2,376)	118,517	115,021	115,021	6.24
<b>Total Financial Liabilities</b>	<b>17,633</b>	<b>(2,376)</b>	<b>118,517</b>	<b>133,774</b>	<b>133,774</b>	

The information provided has been prepared for consolidated activity only.

\* These funds are also subject to Currency Risk due to holdings in foreign investments.

*Interest rate risk* is the risk that the realisable value of a financial instrument will fluctuate due to changes in market interest rates.

*Currency risk* is the risk that the value of a financial instrument will fluctuate due to changes in foreign exchange rates.

*Market risk* is the risk that the value of a financial instrument will fluctuate as a result of changes in market prices.

*Cash flow risk* is the risk that realisable future cash flows associated with a monetary financial instrument will fluctuate in amount.

*Credit risk* is the risk that one party to a financial instrument will fail to discharge an obligation and cause the other party to incur a financial loss.

The University's maximum exposure to credit risk at 31 December 2005 in relation to each class of recognised financial assets is the carrying amount of those assets as indicated in the Balance Sheet. The University has no significant exposure to any concentration of credit risk. All figures for credit risk referred to do not take into account the value of any collateral or other security.

THE AUSTRALIAN NATIONAL UNIVERSITY

NOTES continued

	Consolidated		University	
	2006 \$'000	2005 \$'000	2006 \$'000	2005 \$'000
<b>31. RECONCILIATION OF OPERATING RESULT TO NET CASH FLOWS FROM OPERATIONS</b>				
Reported net operating surplus/(deficit) from ordinary activities	225,739	46,678	224,917	46,268
Depreciation and amortisation of property, plant and equipment	42,643	39,080	42,376	38,809
Impairment losses	2,128	3,434	2,119	3,425
Net loss on disposal of assets	584	1,920	882	1,930
Net (gain) on revaluation of investment property	(2,919)	-	(2,919)	-
Provision for doubtful debts	(180)	254	(180)	254
Provision for income tax	(143)	147	-	-
Unrealised (gain)/loss on investments	2,864	(1,827)	2,864	(1,827)
Realised (gain)/loss on investment sales	(20,540)	(19,931)	(20,540)	(19,931)
(Increase)/decrease in operating assets				
Receivables	(3,810)	745	(985)	5,136
Advance payments and prepaid expenditure	(2,231)	(2,787)	(2,232)	(2,848)
Inventories	(1,919)	(4,420)	903	(385)
Increase/(decrease) in operating liabilities				
Provision for employee entitlements	5,658	14,009	5,633	14,048
Employee related liabilities	(2,661)	15,438	(2,661)	15,438
Trade creditors	3,140	(4,823)	2,802	(4,669)
Other provisions and payables	6,987	12,022	1,587	2,519
Other		-		
Net cash flows from operating activities	<u>255,340</u>	<u>99,939</u>	<u>254,566</u>	<u>98,167</u>

**32. LAND**

**Australian Capital Territory**

The major teaching and research facilities of the University are located on the Acton Campus site of 148 hectares and the Mt Stromlo site of 81 hectares. These sites are provided free of charge and held on lease in perpetuity. The use of this land is restricted to Australian National University activities. The University occupies other sites of 224 hectares within the Australian Capital Territory on varying leasehold terms and conditions. The value of land in the Australian Capital Territory has been assessed and brought to account.

**New South Wales**

The University owns 148 hectares of freehold land at Coonabarabran on which is located the Siding Spring Observatory and a further 3 hectares is held by the University at Coonabarabran under permissive occupancy. The University owns 349 hectares of freehold land at Kioloa. The value of land in New South Wales has been assessed and brought to account.

**Northern Territory**

The University occupies 26,500 hectares near Tennant Creek held on lease in perpetuity on which is located the Warramunga Seismic Station. The University owns 4 hectares of freehold land at Darwin on which is located field research headquarters. The value of land in the Northern Territory has been assessed and brought to account.

**Fiji**

The University occupies 1 hectare at Suva, which is used for field research purposes and is held on a 75 year lease from November 1965. The value of this site has not been assessed nor brought to account.

## THE AUSTRALIAN NATIONAL UNIVERSITY

## NOTES continued

## 33. REMUNERATION OF OFFICERS

	Consolidated		University	
	2006	2005	2006	2005
	\$	\$	\$	\$
Income received or due and receivable by officers <sup>1</sup>	11,622,874	10,223,324	11,622,874	9,764,141

1. Aggregate remuneration disclosed relates only to those officers captured within the \$15,000 bands above \$130,000. An 'officer' is defined as a person who is concerned in, or takes part in, the management of the university. The directors of entities consolidated are considered officers of the consolidated entity.

The number of officers included in these figures are shown below in the relevant income bands

	Consolidated		University	
	2006	2005	2006	2005
	Number	Number	Number	Number
\$130,000 - \$144,999	6	8	6	7
\$145,000 - \$159,999	9	8	9	7
\$160,000 - \$174,999	5	11	5	10
\$175,000 - \$189,999	8	7	8	7
\$190,000 - \$204,999	9	4	9	4
\$205,000 - \$219,999	7	3	7	3
\$220,000 - \$234,999	2	4	2	4
\$235,000 - \$249,999	2	2	2	2
\$250,000 - \$264,999	5	2	5	2
\$280,000 - \$294,999	-	2	-	2
\$295,000 - \$309,999	1	1	1	1
\$310,000 - \$324,999	1	-	1	-
\$355,000 - \$369,999	1	-	1	-
\$550,000 - \$564,999	-	1	-	1
\$655,000 - \$669,999	1	-	1	-
	57	53	57	50

The aggregate amount of separation and redundancy payments during the year to officers was nil.

## 34. DIRECTORS' REMUNERATION

	Consolidated		University	
	2006	2005	2006	2005
	Number	Number	Number	Number
\$0 - \$14,999	2	3	-	-
\$15,000 - \$29,999	1	1	-	-
\$30,000 - \$44,999	2	1	-	-
	5	5	-	-

	Consolidated		University	
	2006	2005	2006	2005
	\$	\$	\$	\$
Total remuneration received or due and receivable by Directors of the Consolidated Entity	105,900	90,200	-	-

Employees of the University who are members of Council do not receive remuneration for Council service.



NOTES continued

35. REMUNERATION OF AUDITORS

	Consolidated		University	
	2006	2005	2006	2005
	\$	\$	\$	\$
Remuneration to the Auditor-General for auditing the financial statements for the reporting period <sup>1</sup>	283,000	246,000	225,000	192,000
Total remuneration paid to the Auditor-General	283,000	246,000	225,000	192,000

1. Amounts shown exclude GST paid on these services.  
No other services were provided by the Auditor-General during the reporting period.

36. NUMBER OF EMPLOYEES

The number of employees at the end of the reporting period was 3,798 for the University (2005 3,850) and 3,849 for the consolidated entity (2005 3,903).

37. SUPERANNUATION COMMITMENTS

37.1 Commonwealth Superannuation Account

Since 1949, the University has maintained an account, on conditions approved by the Treasurer of the Commonwealth, to meet the emerging costs of the employer's liability under the Commonwealth Superannuation Scheme - a Defined Benefit Scheme. The Commonwealth Government has now closed this Scheme.

The Commonwealth Superannuation Account maintained by the University is not a superannuation fund as defined in AASB 119, the assets supporting the liability are maintained as a component of the overall University investment portfolio. As far as practical the University has adopted the accounting treatment and disclosure requirements of AASB 119. The University is recognising actuarial gains and losses in the period in which they occur outside the profit and loss as permitted under the Standard and the FMOs, Section 44.3, and as such are disclosed in the Statement of Changes in Equity 2006 \$23,706,488 (2005 (\$3,407,773)) resulting in a cumulative amount of actuarial gains recognised in equity of \$49,148,345.

Transfers are made to the account each fortnight in accordance with a predetermined formula approved by Council and based on advice from the Commonwealth Actuary. The University's contribution rate in 2006 was 14 per cent of eligible employee superannuable salaries (equivalent to the contribution rate the University is required to make for all employees who are members of UniSuper, formerly known as the Superannuation Scheme for Australian Universities). Pensions are met on an emerging cost basis and paid to the Commonwealth Superannuation Administration.

The following have been recognised in the Income Statement in Employee expenses; Current Service Cost \$3,747,005 2005 \$4,029,069) and Interest Cost \$26,044,985 (2005 \$26,007,151).

The following principal actuarial assumptions have been adopted as at reporting date (values are expressed as weighted averages):

	2006	2005
Discount rate as at 31 December	5.95%	5.23%
Expected return on plan assets at 31 December	8.60%	8.60%
Future salary increases	4.00%	4.00%
Future pension increases	2.50%	2.50%

The University's Investment Department completed a review of the historical performance of its investment portfolio and the current, and likely future investment environment taking into account economic growth and inflation profiles in each of the investment sectors. The projections were prepared for a twenty year time horizon and a nominal annualised return rate of 8.6% was determined.

Reconciliation of the Present Value of the Obligation

	Consolidated		University	
	2006	2005	2006	2005
	\$	\$	\$	\$
Previous year closing balance	487,083	471,637	487,083	471,637
Current Service cost	3,747	4,029	3,747	4,029
Interest cost	26,045	26,007	26,045	26,007
Actuarial (gains)/losses	(23,707)	3,408	(23,707)	3,408
Benefit payments	(18,351)	(17,998)	(18,351)	(17,998)
Current year closing balance	474,817	487,083	474,817	487,083

## THE AUSTRALIAN NATIONAL UNIVERSITY

## NOTES continued

## 37. SUPERANNUATION COMMITMENTS continued

## 37.1 Commonwealth Superannuation Account continued

## Reconciliation of the Fair Value of Plan Assets

	Consolidated		University	
	2006 \$	2005 \$	2006 \$	2005 \$
Opening fair value of plan assets	517,050	464,428	517,050	464,428
Expected return on plan assets	43,762	39,262	43,762	39,262
Contributions	1,978	2,212	1,978	2,212
Transfers	-	(35,000)	-	(35,000)
Benefits paid	(18,351)	(17,998)	(18,351)	(17,998)
Actuarial gain/(loss)	29,143	64,146	29,143	64,146
	<u>573,582</u>	<u>517,050</u>	<u>573,582</u>	<u>517,050</u>
Current year closing balance				

## Reconciliation of the present value of the obligation and the fair value of the plan assets to the assets and liabilities recognised in the Balance Sheet

	Consolidated		University	
	2006 \$	2005 \$	2006 \$	2005 \$
Present value of funded obligation	474,818	487,083	474,818	487,083
Fair value of plan assets	573,581	517,049	573,581	517,049
Present value of unfunded obligations	-	-	-	-
Unrecognised past service cost	-	-	-	-
Net liability in Balance Sheet	<u>(98,763)</u>	<u>(29,966)</u>	<u>(98,763)</u>	<u>(29,966)</u>
Amounts in Balance Sheet				
Liabilities	474,818	487,083	474,818	487,083
Assets	573,581	517,049	573,581	517,049
Net liability in Balance Sheet	<u>(98,763)</u>	<u>(29,966)</u>	<u>(98,763)</u>	<u>(29,966)</u>

## 37.2 Superannuation Scheme for Australian Universities

New continuing staff members employed by the University since 1 April 1983 have been required to join the Superannuation Scheme for Australian Universities (SSAU) until 30 September 2000. From 1 October 2000, SSAU and the Tertiary Education Superannuation Scheme merged to become a single scheme, UniSuper. This merged scheme continues to have a defined benefits component which is managed independently of the University. The University contributes to the Scheme at the rate equivalent to 14 per cent of members' salaries. The University's contributions in 2006 were \$51,257,473 (2005 \$47,802,123).

Subsequent to changes enacted to the UniSuper Trust Deed by the Trustees during 2006 the previously described Unisuper Defined Benefit Plan (DBP) is now compliant with the requirements of AASB 119 applicable to a Defined Contribution Fund (DCF). Although the DCF is a defined contribution fund under AASB 119, it does remain a defined benefit fund for other purposes and continues to require actuarial oversight.

## THE AUSTRALIAN NATIONAL UNIVERSITY

---

### NOTES continued

#### 37. SUPERANNUATION COMMITMENTS continued

##### 37.3 Public Sector Superannuation Scheme

The University has a small number of employees who are members of the Public Sector Superannuation Scheme to which the University contributes at the rate of 9.7 per cent of members salaries. During 2006, the University's contributions amounted to \$129,574 (2005 \$116,821). This scheme is closed to new members of the University's staff.

##### 37.4 Employee Non Contributory Productivity Superannuation Schemes

The University's contributions for employees who are contributors to the Commonwealth Superannuation and Public Sector Superannuation Schemes are paid to the Commonwealth Superannuation Administration. The University contributes to the Schemes between 2 to 3 per cent of members' salaries. During 2006, the University's contributions were \$355,748 (2005 \$368,048) and \$31,594 (2005 \$32,518) respectively.

The University paid contributions for eligible employees, other than employees who are contributors to the Commonwealth Superannuation and Public Sector Superannuation Schemes, to the Tertiary Education Superannuation Scheme until 30 September 2000, and since then to the newly established UniSuper. The new scheme continues to offer a cash accumulation component. The University contributes to the Scheme at a rate of 3 per cent of members' salaries for full-time University employees. The University's contributions in 2006 were \$17,277,142 (2005 \$14,537,263).

#### 38. COOPERATIVE RESEARCH CENTRES

The University received Commonwealth Funding under the Cooperative Research Centres Program for the establishment of the following Cooperative Research Centres:

**Australian Photonics** - an unincorporated collaborative venture established in 1992. The current partners include the University, The University of Melbourne, The University of New South Wales, The University of Sydney, RMIT University, TAFE NSW, DSTO and 21 industry partners. The Centre's area of research, development and commercialisation is telecommunications - new and improved hardware components to facilitate more efficient and effective telecommunications services. The objectives of the CRC include to be a centre of excellence in photonics with internationally recognised, commercially relevant research programs; to improve the international competitiveness of Australian industry through transfer of photonic technology; and to provide industry with knowledge and skills in photonics through educational programs with emphasis on high quality postgraduate training. The University's contribution (representing 13.47 per cent of the total of the partners' contributions) in the form of staff and equipment resources and cash from 1992 has an approximate value of \$10,482,000. The Centre is administered by Australian Photonics Pty Ltd. The University's involvement ceased

**Landscape Environments and Mineral Exploration** - a cooperative research centre established in 1995 with the core participants being the CSIRO, the University, the Australian Geological Survey Organisation, and the University of Canberra. The Centre is developing a framework to increase the understanding of the evolution of the Australian landscape to improve the ability to recognise major new mineral deposits. The Centre's agreement was renewed for seven years from 1 July 2001. The University's in-kind contribution (representing 8.2 per cent of the total of the partners' contributions) will be \$11,416,000 over seven years from 2001. The Centre is administered by the CSIRO.

**Tropical Plant Protection** - a cooperative research centre with the core participants being the University, the Bureau of Sugar Experiment Stations, CSIRO, the Departments of Agriculture, Fisheries and Forestry (Australian Quarantine Inspection Service and the National Office of Animal and Plant Health), Primary Industries (QLD), Primary Industries and Fisheries (NT), the Northern Territory University, RhoBio, the University of Queensland. The centre's objective includes establishing programs for improved plant disease and pest management, with major emphasis on improved disease and pest prevention strategies and the increased utilisation of plant resistance to diseases and pests. The University's in kind contribution (representing 2.13 per cent of the total of core participants' contributions) will be \$1,092,000 over seven years from 1999. The University of Queensland acts as the Centre Agent. The Centre was wound up 30 June 2006.

## THE AUSTRALIAN NATIONAL UNIVERSITY

---

### NOTES continued

#### 38. COOPERATIVE RESEARCH CENTRES continued

Greenhouse Accounting - a cooperative research centre with the core participants being the Australian Greenhouse Office, the University, the Bureau of Rural Sciences, the CSIRO, the Department of Conservation and Land Management (WA), the Departments of Natural Resources and Primary Industries (QLD) and State Forests (NSW). The Centre is developing methods of accounting for carbon emissions and sinks in Australian landscapes and for reducing greenhouse gases through responsible management of Australian ecosystems. The University's in kind contribution (representing 45 per cent of the total of the partners' contributions) will be \$23,878,000 over seven years from 1999. The University acts as the Centre Agent. This CRC was finalised during 2006.

Innovative Dairy Products - a cooperative research centre with the core partners being Monash University, CSIRO, Genetics Australia Co-operative Limited, the University of Sydney, Dairy Research and Development Corporation, Australian Dairy Farmers Federation and Bonlac Foods Limited. The mission of the centre is to develop and commercialise new genomic technologies and products to underpin a highly innovative, progressive and internationally competitive Australian Dairy industry. As an associate partner, the University's in kind contribution (representing 2.0 per cent of the total of core and supporting participants' contributions) will be \$1,112,000 over seven years from July 2001. The agreement provides for the establishment of a propriety limited company for management purposes.

Functional Communication Surfaces - a cooperative research centre with the core partners being the University, Monash University, CSIRO, Amcor Packaging (Australia) Pty Ltd, Carter Holt Harvey Tissues Pty Ltd, Norske Skog Paper Mills (Australia) Ltd, Note Printing Australia Ltd and PaperlinX Ltd. The mission of the centre is to establish a self-funding R&D capability able to fully leverage the market opportunities offered by the rapidly expanding requirements for "smart" print surfaces. The University's in kind contribution (representing 17.1 per cent of the total of core partners' contributions) will be \$5,999,000 over seven years from July 2001. Monash University acts as the Centre Agent.

Advanced Automotive Technology - a cooperative research centre with participants including eight vehicle and component manufacturers, two state governments and ten research institutions including the Australian National University with a total investment of approximately \$100 million over seven years. The CRC was established in December 2005 with funding for seven years. The mission of the Centre is to deliver smarter, safer, cleaner manufacturing and vehicle technology for Australia's benefit. The University's financial contribution is \$50K per annum.

Antarctic Climate & Ecosystems - a cooperative research centre with core participants of Department of Environment and Heritage (Australian Antarctic Division), University of Tasmania, CSIRO, Commonwealth Bureau of Meteorology. The Australian National University is a supporting partner. The CRC was established in 2003 and is funded until June 2010. The CRC is dedicated to sustainable management of Antarctic marine ecosystem resources and the study of atmospheric processes of the Southern Ocean and their role in global and regional climate change.

Forestry - a cooperative research centre with core participants including Tasmanian, Victorian and Queensland state government departments, industry representatives and research institutions. The Australian National University is a supporting partner, our financial contribution being \$50K per annum. The CRC for Forestry was established in 2005 and is funded for seven years. The CRC's research is focused upon supporting environmentally sustainable, cost competitive, eucalypt plantation forestry. Total investment from federal government and partner resources is expected to be approximately \$85 million over seven years.

Invasive Animals - a cooperative research centre with core participants including New South Wales, South Australia, ACT, Queensland, Victoria and Western Australia state government departments, industry representatives, research institutions and CSIRO. The Australian National University is a supporting partner. The research covers land-based and water-based invasive animals in terms of detection and prevention.

Bushfire CRC - a cooperative research centre with the core participants including CSIRO, University of Melbourne, University of Tasmania, University of Western Australia, Bureau of Meteorology, 5 State Government departments and 7 State fire & emergency authorities. The University is an associate participant, our financial contribution being \$10K per annum. The Centre is to undertake research which enhances the management of the bushfire risk to the community in an economically and ecologically sustainable way. The University's in kind contribution will be \$221,000 over seven years from July 2003. The centre operates as an incorporated management company (Bushfire Cooperative Research Centre Limited).

NOTES continued

38. COOPERATIVE RESEARCH CENTRES continued

Desert Knowledge - a cooperative research centre with the core participants including CSIRO, Charles Darwin University, Curtin University, Office of Indigenous Policy Coordination, Northern Territory Government, Government of Western Australia, Central Land Council and Desert people's Centre. The Australian National University is an associate partner, with a financial contribution of \$12K per annum. The Centre was established in 2002 for a period of seven years. The Centre focuses on research efforts creating useful outcomes with commercial application for desert people, communities and its partners.

Cotton Catchment Communities - a cooperative research centre with the core participants including CSIRO, four cotton industry representatives, NSW and Queensland state government departments and four research institutions. The CRC was established in 2006 for a period of seven years. The Australian National University is an affiliate with a financial contribution of \$50K per annum. The Centre is to undertake collaborative research, education and commercialisation activities to provide innovative knowledge that is adopted for the benefit of the Australian cotton industry, regional communities and the nation.

Costs for all Cooperative Research Centres are expensed as incurred except where future benefits are expected beyond reasonable doubt to exceed these costs. In 2006 all costs were expensed.

39. RELATED PARTY DISCLOSURES

The University enters into a number of transactions for the provision of goods and services under normal commercial terms and conditions with student organisations based on campus.

40. CONTINGENT ASSETS

The University lost significant assets at the Research School of Astronomy and Astrophysics, Mt Stromlo Observatory as a result of the Canberra firestorms on 18 January 2003. The University initiated legal proceedings against the insurance companies and later joined the broker involved. The University settled the court proceedings against the insurance companies in December 2006, however legal action against the broker is continuing. The final outcome of this action cannot be reliably measured at this time.

The University is party to a "Build Own Operate and Transfer" (BOOT) scheme that involves construction and operation of a 500-bed student accommodation facility known as Unilodge@ANU. Under the arrangement the operators have a concession period of 40 years from 2007. At the end of this period the facility will be transferred to the University. The financial outcome of this event cannot be reliably measured at this time.

41. CONTINGENT LIABILITIES

The following guarantees have been provided by the University:

Guarantee	Purpose	University	
		2006 \$'000	2005 \$'000
ANZ Bank	To support financing arrangements entered into by Burgmann College for building development	8,915	8,915
Credit Union of Canberra	To support financing arrangements entered into by needy students	9	6
National Australia Bank	To support balances of loans provided pursuant to the Legal Workshop Loan Scheme	-	9
Other	To support tenancy arrangements with various property lessors	46	46
		<u>8,970</u>	<u>8,976</u>

The University is currently involved in a number of legal matters. The liability of the University in respect of these matters cannot be reliably estimated at this time.

**THE AUSTRALIAN NATIONAL UNIVERSITY**
**NOTES continued**
**42. SEGMENT INFORMATION**

The Economic Entity operates predominantly in the Australian Capital Territory for the purpose of teaching and research.

**43. ECONOMIC DEPENDENCY**

The University is to a significant extent dependant on monies received pursuant to the Higher Education Funding Act 1988, the Higher Education Support Act 2003 and the Australian Research Council Act 2001 to fund its operations. In 2006, funding from these Acts (\$362,587,000) represented 58.9 per cent (2005 \$352,504,000 50.9 per cent) of the total operating revenues.

**44. EVENTS OCCURRING AFTER THE BALANCE SHEET DATE**

The University incurred significant damage to assets across the Acton campus as a result of severe storm cells across Canberra on 27 February 2007. Some interruption to normal operating activities has also resulted. The assets are covered by appropriate insurance policies.

The final figure for losses will not be known until damages have been assessed. Negotiations with the insurance companies for compensation will be underway for some time.

**45. SPECIAL ACCOUNTS**

a) The University has established 'The Australian National University ADS Students Third Party Payments ADS Special Account'. The Account holds funds used to meet costs for students sponsored by Ausaid. The monies are placed in a special bank account and expended on Student stipends in accordance with the terms of the Ausaid agreement. The monies are not available for other purposes of the University and are not recognised in the financial statements.

	University	
	2006	2005
	\$'000	\$'000
Balance carried forward from previous year	2	4
Receipts during the year	5,606	5,318
Interest received	23	4
Available for payments	<u>5,631</u>	<u>5,326</u>
Less payments made	5,625	5,324
Balance carried forward to next year	<u>6</u>	<u>2</u>

b) The University processes Comcare receipts and payments through a distinct location and account code combination in the ledger. The monies are not available for other purposes of the University and are not recognised in the financial statements.

	University	
	2006	2005
	\$'000	\$'000
Balance carried forward from previous year	-	-
Receipts during the year	432	527
Available for payments	<u>432</u>	<u>527</u>
Less payments made	432	527
Balance carried forward to next year	<u>-</u>	<u>-</u>

NOTES continued

46. JOINT VENTURES

46.1 Arafura Timor Research Facility

The Australian National University has entered into a joint venture operation called the Arafura Timor Research Facility (ATRF), a major national research facility, whose principal function is to support the conduct of world-class research into marine and coastal ecosystems of the Arafura Timor region, including living and non-living resources, and into the effective use of those resources through science, technology, policy and industry. The purpose of the facility is to facilitate research directed at the growth and regional capacity of commercial enterprises, to assist the economic development and resource security of the littoral states of the regional seas.

The Australian National University has a 50% participating interest in this joint venture and is entitled to 50% of its output. The Australian National University's interests in the assets employed in the joint venture are included in the consolidated statement of financial position for 2006, in accordance with the accounting policy described in Note 1.18, under the following classifications:

	University	
	2006	2005
	\$'000	\$'000
<b>Share of ATRF Assets and Liabilities</b>		
Current Assets		
Cash	35	407
Receivables	45	1
Total Current Assets	80	408
Non-Current Assets		
Work in Progress - Building	121	0
Buildings - at cost	2,985	2,985
Less: Accumulated depreciation	(112)	(37)
	2,994	2,948
Plant, Equipment and Motor Vehicles - at cost	204	204
Less: Accumulated depreciation	(38)	(8)
	166	196
Total Non Current Assets	3,160	3,144
<b>Total Assets</b>	3,240	3,552
Current Liabilities		
Other Payables	1,620	1,776
Total Current Liabilities	1,620	1,776
<b>Total Liabilities</b>	1,620	1,776
<b>Share of assets employed in joint venture</b>	1,620	1,776
<b>Share of ATRF Revenues, Expenses and Results</b>		
Revenues	132	427
Expenses	(288)	(478)
<b>Surplus from ordinary activities</b>	(156)	(51)

## THE AUSTRALIAN NATIONAL UNIVERSITY

---

### NOTES continued

#### 46. JOINT VENTURES continued

##### 46.2 ANU MTAA Super Venture Capital Pty Ltd

The Australian National University has entered into a joint venture entity called the ANU Super Venture Capital Pty Ltd which is registered in Australia. The entity's principal function is to provide governance and administration services to the ANU MTAA Super Venture Capital Partnership, LP.

The Australian National University has a 50% participating interest in this joint venture. The voting power held by the Australian National University is 50%. The Australian National University's interests in the joint venture have been accounted for under the Equity Method and as such reported ownership interest is included in the consolidated statement in accordance with the accounting policy described in Note 1.18.

Retained earnings attributable to the interest in the joint venture as at 31 December 2006 \$5,746 (2005 \$19,162). Carrying amount of investment in the joint venture entity as at 31 December 2006 \$24,920 (2005 \$19,174).

##### 46.3 ANU MTAA Super Venture Capital Partnership, LP

The Australian National University has entered into a joint venture entity called the ANU Super Venture Capital Partnership, LP, which is registered under the Partnership Act as an incorporated limited partnership and registered under the Venture Capital Act as a venture capital limited partnership with ANU MTAA Super Venture Capital Limited Partnership acting as the General Partner of the Partnership and the Australian National University and the Motor Trades Association of Australia Superannuation Fund Pty Limited as the limited partners of the Partnership. ANU MTAA Super Venture Capital Partnership, LP is registered in Australia. The entity's principal function is to provide investment in commercialisation, pre-seed and early stage private equity investment opportunities.

The Australian National University has a 50% participating interest in this joint venture. The voting power held by the Australian National University is 50%. The Australian National University's interests in the joint venture have been accounted for under the Equity Method and as such reported ownership interest is included in the consolidated statement in accordance with the accounting policy described in Note 1.18.

Accumulated deficits attributable to the interest in the joint venture as at 31 December 2006 (\$169,365) (2005 (\$90,990)). Carrying amount of investment in the joint venture entity as at 31 December 2006 \$489,645 (2005 \$159,010).

##### 46.4 ANU Baulderstone Hornibrook Pty Ltd (BH) - Umbrella Development Agreement (UDA)

The Australian National University has entered into an unincorporated joint venture with BH to facilitate the development of an area of land known as the City West Precinct that adjoins the University and the city area of Canberra, in the ACT, through the execution of a UDA. The University has previously entered into a Precinct Development Agreement with the ACT Government to allow development of the City West Precinct for University related purposes. The first project on the Precinct is a 500-bed student accommodation BOOT scheme facility operated by Unilodge.



## NOTES continued

## 47. ACQUITTAL OF AUSTRALIAN GOVERNMENT FINANCIAL ASSISTANCE

## 47.1 DEST - CGS and Other DEST Grants

Notes	Commonwealth Grants Scheme #		Indigenous Support Scheme		Equity Programmes*		Workplace Reform Programme		Workplace Productivity Programme	
	2006 \$'000	2005 \$'000	2006 \$'000	2005 \$'000	2006 \$'000	2005 \$'000	2006 \$'000	2005 \$'000	2006 \$'000	2005 \$'000
Financial assistance received in cash during the reporting period (total cash received from the Commonwealth for the Programmes)	46,893	42,721	332	285	143	169	698	662	588	-
Net accrual adjustments	-	-	-	-	-	-	-	-	-	-
Revenue for the Period	46,893	42,721	332	285	143	169	698	662	588	-
Surplus / (deficit) from the previous year	-	-	-	-	-	-	-	-	-	-
Total revenue including accrued revenue	46,893	42,721	332	285	143	169	698	662	588	-
Less expenses including accrued expenses	46,893	42,721	332	285	143	169	698	662	588	-
Surplus / (deficit) for reporting period	-	-	-	-	-	-	-	-	-	588

# Includes the basic CGS grant amount, CGS-Regional Loading and CGS-Enabling Loading. Comparatives are pro-rata split for CGSNIF.

\* Includes Higher Education/Equity Programme and Students with Disabilities Programme.

## 47.1 DEST - CGS and Other DEST Grants continued

Notes	Learning & Teaching Performance Fund		National Institutes Funding		Capital Development Pool		Superannuation Programme		Collaboration & Structural Reform Programme		Total	
	2006 \$'000	2005 \$'000	2006 \$'000	2005 \$'000	2006 \$'000	2005 \$'000	2006 \$'000	2005 \$'000	2006 \$'000	2005 \$'000	2006 \$'000	
Financial assistance received in cash during the reporting period (total cash received from the Commonwealth for the Programmes)	2,060	-	163,603	157,880	2,129	-	-	-	1,322	100	217,768	201,817
Net accrual adjustments	-	-	-	-	-	-	-	-	-	-	-	-
Revenue for the Period	2,060	-	163,603	157,880	2,129	-	-	-	1,322	100	217,768	201,817
Surplus / (deficit) from the previous year	-	-	-	-	-	-	-	-	-	34	-	34
Total revenue including accrued revenue	2,060	-	163,603	157,880	2,129	-	-	-	1,322	134	217,768	201,851
Less expenses including accrued expenses	2,060	-	163,603	157,880	2,129	-	-	-	-	134	215,858	201,851
Surplus / (deficit) for reporting period	-	-	-	-	-	-	-	-	1,322	-	1,910	-

## THE AUSTRALIAN NATIONAL UNIVERSITY

## NOTES continued

## 47. ACQUITTAL OF AUSTRALIAN GOVERNMENT FINANCIAL ASSISTANCE continued

## 47.2 DEST - Higher Education Special Program Grants

	Commonwealth Capital Grant 2006		University Matching Funds
	\$'000 Note 1	\$'000 Note 2	\$'000 Note 3
Financial Assistance	50,000	75,000	769
Interest	1,441	2,161	-
Total Funds Available	51,441	77,161	769
Less Expenditure	1,690	196	769
Surplus / (deficit) for reporting period	49,751	76,965	-

- 1 DEST Funding to assist ANU to meet the costs of the redevelopment of the John Curtin School of Medical Research Stage 2.
- 2 DEST Funding to assist ANU to meet costs of new capital works (including major refurbishment, but excluding routine maintenance) to build/replace science laboratories and associated services as a first priority.  
ANU is to spend \$50 million of its own resources on capital works (excluding routine maintenance), including for building/replacing science laboratories and associated services.
- 3

THE AUSTRALIAN NATIONAL UNIVERSITY

NOTES continued

47. ACQUITTAL OF AUSTRALIAN GOVERNMENT FINANCIAL ASSISTANCE continued

47.3 Higher Education Loan Programmes

Notes	HECS -HELP (Australian Government payments only)		FEE-HELP		OS-Help*		Total	
	2006 \$'000	2005 \$'000	2006 \$'000	2005 \$'000	2006 \$'000	2005 \$'000	2006 \$'000	2005 \$'000
Financial assistance received in cash during the reporting period (total cash received from the Commonwealth for the Programmes)	24,396	23,139	6,025	7,015	-	164	30,585	30,404
Net accrual adjustments	-	-	-	-	-	-	-	-
Revenue for the Period	24,396	23,139	6,025	7,015	164	250	30,585	30,404
Surplus / (deficit) from the previous year	-	-	-	-	121	-	121	-
Total revenue including accrued revenue	24,396	23,139	6,025	7,015	285	250	30,706	30,404
Less: expenses including accrued expenses	24,396	23,139	6,025	7,015	268	129	30,689	30,283
Surplus / (deficit) for reporting period	-	-	-	-	17	121	17	121

\* OS-Help receipts from the Australian Government are not included in the Income Statement.

47.4 Scholarships

Notes	Australian Postgraduate Awards		International Postgraduate Research Scholarships		Commonwealth Indigenous Scholarships		Commonwealth Education Costs Scholarships		Commonwealth Accommodation Scholarships		Total	
	2006 \$'000	2005 \$'000	2006 \$'000	2005 \$'000	2006 \$'000	2005 \$'000	2006 \$'000	2005 \$'000	2006 \$'000	2005 \$'000	2006 \$'000	2005 \$'000
Financial assistance received in cash during the reporting period (total cash received from the Commonwealth for the Programmes)	4,902	5,690	1,112	1,205	-	-	32	134	445	282	6,686	7,543
Net accrual adjustments	-	-	-	-	-	-	-	-	-	-	-	-
Revenue for the Period	4,902	5,690	1,112	1,205	-	-	32	134	445	282	6,686	7,543
Surplus / (deficit) from the previous year	130	(518)	46	222	11	-	-	-	18	2	205	(294)
Total revenue including accrued revenue	5,032	5,172	1,158	1,427	11	32	32	134	463	284	6,891	7,249
Less: expenses including accrued expenses	5,076	5,242	1,281	1,381	-	21	182	134	339	266	6,878	7,044
Surplus / (deficit) for reporting period	(44)	130	(123)	46	11	11	45	-	124	18	13	205

## THE AUSTRALIAN NATIONAL UNIVERSITY

## NOTES continued

## 47. ACQUITTAL OF AUSTRALIAN GOVERNMENT FINANCIAL ASSISTANCE continued

## 47.5 DEST Research

Notes	Institutional Grants Scheme		Research Training Scheme		Systemic Infrastructure Initiative		Research Infrastructure Block Grants		Total	
	2006 \$'000	2005 \$'000	2006 \$'000	2005 \$'000	2006 \$'000	2005 \$'000	2006 \$'000	2005 \$'000	2006 \$'000	2005 \$'000
Financial assistance received in cash during the reporting period (total cash received from the Commonwealth for the Programmes)	17,664	16,668	27,394	25,597	14,554	28,258	17,249	14,487	76,861	85,010
Net accrual adjustments	-	-	-	-	-	-	-	-	-	-
Revenue for the Period	17,664	16,668	27,394	25,597	14,554	28,258	17,249	14,487	76,861	85,010
Surplus / (deficit) from the previous year	-	-	-	-	3,083	10,733	-	-	3,083	10,733
Total revenue including accrued revenue	17,664	16,668	27,394	25,597	17,637	38,991	17,249	14,487	79,944	96,743
Less expenses including accrued expenses	17,664	16,668	27,394	25,597	15,734	35,908	17,249	14,487	78,041	92,660
Surplus / (deficit) for reporting period	-	-	-	-	1,903	3,083	-	-	1,903	3,083

## 47.6 Australian Research Council

## (a) Discovery

Notes	Projects		Fellowships		Indigenous Research Development		Total	
	2006 \$'000	2005 \$'000	2006 \$'000	2005 \$'000	2006 \$'000	2005 \$'000	2006 \$'000	2005 \$'000
Financial assistance received in cash during the reporting period (total cash received from the Commonwealth for the Programmes)	35,083	35,724	5,080	5,880	-	1	40,163	41,605
Net accrual adjustments	-	-	-	-	-	-	-	-
Revenue for the Period	35,083	35,724	5,080	5,880	-	1	40,163	41,605
Surplus / (deficit) from the previous year	17,572	13,157	2,561	2,387	-	-	20,133	15,544
Total revenue including accrued revenue	52,655	48,881	7,641	8,267	1	1	60,296	57,149
Less expenses including accrued expenses	35,584	31,309	5,273	5,706	1	1	38,857	37,016
Surplus / (deficit) for reporting period	19,071	17,572	2,368	2,561	-	-	21,439	20,133

## 47. ACQUITTAL OF AUSTRALIAN GOVERNMENT FINANCIAL ASSISTANCE continued

47.6 Australian Research Council  
(b) Linkages

Notes	Special Research Initiatives		Infrastructure		International Research Exchange		Projects		Total	
	2006 \$'000	2005 \$'000	2006 \$'000	2005 \$'000	2006 \$'000	2005 \$'000	2006 \$'000	2005 \$'000	2006 \$'000	2005 \$'000
Financial assistance received in cash during the reporting period (total cash received from the Commonwealth for the Programmes)	259	237	3,322	3,698	197	213	7,002	6,756	10,780	10,904
Net accrual adjustments	-	-	-	-	-	-	-	-	-	-
Revenue for the Period	259	237	3,322	3,698	197	213	7,002	6,756	10,780	10,904
Surplus / (deficit) from the previous year	247	17	1,844	1,153	220	213	2,729	4,049	5,040	5,432
Total revenue including accrued revenue	506	254	5,166	4,851	417	426	9,731	10,805	15,820	16,336
Less expenses including accrued expenses	352	7	2,684	3,007	273	206	5,650	8,076	8,969	11,296
Surplus / (deficit) for reporting period	154	247	2,472	1,844	144	220	4,081	2,729	6,851	5,040

47.6 Australian Research Council  
(c) Networks and Centres

Notes	Research Networks		Centres		Total	
	2006 \$'000	2005 \$'000	2006 \$'000	2005 \$'000	2006 \$'000	2005 \$'000
Financial assistance received in cash during the reporting period (total cash received from the Commonwealth for the Programmes)	1,332	1,307	8,997	4,318	10,329	5,625
Net accrual adjustments	-	-	-	-	-	-
Revenue for the Period	1,332	1,307	8,997	4,318	10,329	5,625
Surplus / (deficit) from the previous year	1,112	639	1,049	916	2,161	1,555
Total revenue including accrued revenue	2,444	1,946	10,046	5,234	12,490	7,180
Less expenses including accrued expenses	1,721	834	7,405	4,185	9,126	5,019
Surplus / (deficit) for reporting period	723	1,112	2,641	1,049	3,364	2,161

THE AUSTRALIAN NATIONAL UNIVERSITY

NOTES continued

48. PROGRAMS FUNDED BY GRANTS RECEIVED FROM UNITED STATES OF AMERICA FEDERAL GOVERNMENT AGENCIES

Program	Agency	2006		2005		31-Dec \$'000	Expenditure \$'000	31-Dec \$'000
		1-Jan \$'000	Income \$'000	Expenditure \$'000	Income \$'000			
Catalina NEO Sky Survey	NASA	222	62	-	284	284	15	222
University of Arizona Collaborative Agreement to Search for Near Earth Objects	NASA	120	346	299	167	167	158	120
Water Transport in the Lacrimal Gland	NIH	33	(27)	7	(1)	(1)	18	33
Honeybee Olfaction, the Perception of Time, and the Effects of Caffeine	NSF	-	-	-	-	-	50	-
Honeybee Olfaction, the Perception of Time, and the Effects of Caffeine	NIH	45	(91)	(46)	-	-	46	45
Visually Guided Terrain Following and Landing in UAV's	Office of Naval Research	64	2	17	49	49	20	64
Neuromodulation of Excessive Reward-Directed Behaviour	NIH	-	92	127	(35)	(35)	-	-
Temporal Resolution of Flight Control in Dragonflies and Locusts: Lessons for the Design of Flapping	Air Force	-	54	10	44	44	-	-
Plant Response to Bacterial Quorum Sensing Signals	Dept of Agriculture	10	86	107	(11)	(11)	91	10
Metabolism and Toxicity of Halogenated	NIH	(118)	77	(41)	-	-	118	(118)
Mechanisms of Mammalian Neuronal Integration Genes for Immunity and Tolerance	NIH	68	70	107	31	31	3	68
	NIH	(263)	1,613	1,887	(537)	(537)	3,513	(263)
Two Photon Absorption Measurements: Establishing Reference Standards	Air Force	-	26	-	26	26	-	-
New Materials Techniques & Device Concepts for Organic NLO Chromophore Based Electronic Devices	Air Force	6	13	15	4	4	4	6
Investigation of Decoherence Control on a Solid State Qubit	Air Force	-	52	5	47	47	-	-
Detection of Nuclear Explosions Using Infrasonic Techniques	Air Force	85	192	160	117	117	188	85
Antibiotic Resistance and Genetic Relationships of E. Coli from Australia	NIH	-	68	65	3	3	-	-
<b>TOTALS *</b>		<b>272</b>	<b>2,635</b>	<b>2,719</b>	<b>188</b>	<b>188</b>	<b>2,622</b>	<b>272</b>
					<b>1,874</b>	<b>1,874</b>	<b>4,224</b>	

\* The Chief Investigators for the above programs have certified that the grant funds have been expended in accordance with the provisions of the grant contracts.

---

# Glossary

---

ANIP	Australian National Internships Program
ANU	The Australian National University
APAC	Australian Partnership for Advanced Computing
APHCRI	Australian Primary Health Care Research Institute
APSEG	Asia Pacific School of Economics and Government
ARC	Australian Research Council
CEDAM	Centre for Educational Development and Academic Methods
CRC	Cooperative Research Centre
DEST	Department of Education, Science and Training
EFTSL	Equivalent Full-time Student Load – introduced from 2005 with the Higher Education Support Act 2003
ESD	Ecologically Sustainable Development
FTE	Full-time equivalent
IARU	International Alliance of Research Universities
IFRS	International Financial Reporting Standards
JCSMR	The John Curtin School of Medical Research
LIEF	Linkage Infrastructure, Equipment and Facilities (ARC Funding)
MNRF	Major National Research Facilities
MSI	Mathematical Sciences Institute
NCIS	National Centre for Indigenous Studies
NHMRC	National Health and Medical Research Council
UAI	Universities Admissions Index