



Annual Report 2004



THE AUSTRALIAN NATIONAL UNIVERSITY

ANNUAL REPORT 2004

Published by the Marketing and Communications Division
The Australian National University

Published by
Marketing and Communications Division
The Australian National University

Produced by
ANU Publications Unit
Marketing and Communications Division
The Australian National University

Printed by
University Printing Service
The Australian National University

ISSN 1327-7227

April 2005

THE HON EMERITUS PROFESSOR PETER BAUME AO
Chancellor

Canberra ACT 0200 Australia
T: +61 2 6125 2113
F: +61 2 6125 8524
E: Chancellor@anu.edu.au
www.anu.edu.au

1 April 2005

The Hon Dr Brendan Nelson MP
Minister for Education, Science and Training
Parliament House
CANBERRA ACT 2600

Dear Minister,

Report of the Council for the period 1 January 2004 to 31 December 2004

We have the honour to transmit the report of the Council of The Australian National University for the period 1 January 2004 to 31 December 2004 furnished in compliance with Section 9 of the *Commonwealth Authorities and Companies Act 1997*.



Emeritus Professor P E Baume
Chancellor



Professor I W Chubb
Vice-Chancellor

Contents

The Council and University Officers.....	5
Review of 2004: Highlights	8
Review of 2004: The Year of the Review of ANU Quality.....	9
Council and Council Committees.....	15
University Statistics.....	17
Auditor-General's Report	39
Statement by directors.....	41
Financial Statements.....	42
Risk Management Implementation.....	84
ANU Annual Report into Occupational Health & Safety, 2004	85
Freedom of Information Act 1982 Statement	86
Academic Structure.....	89
ANU acronyms.....	90

Further information about ANU

Detailed information about the achievements of ANU, especially research and teaching outcomes, is contained in the annual reports of the University's Research Schools, Faculties, Centres and Administrative Divisions.

For course and other academic information, contact:

Director
Student and Academic Services
The Australian National University
Canberra ACT 0200
T: 02 6125 3339 F: 02 6125 0751

For general information, contact:

Director
Marketing and Communications Division
The Australian National University
Canberra ACT 0200
T: 02 6125 2229 F: 02 6125 5568

The Council and University Officers

The Council

2004 (to 30 June)

Chancellor

The Hon Emeritus Professor P E Baume AO, MB BS MD Syd, HonDLitt USQ, FRACP, FAFPHM, FRACGP (Hon)

Pro-Chancellor

The Hon Justice A C Bennett, BSc (Hons) PhD Syd, LLB NSW

Vice-Chancellor

Professor I W Chubb AO, MSc DPhil Oxon, Hon DSc Flinders

Deputy Vice-Chancellor (Research)

Professor L Cram, BSc(Hons) BE (Hons) PhD Syd

Deputy Vice-Chancellor (Education)

Professor M Gillies, BA ANU, MA Camb, MMus PhD Lond, DipEd Qld, LMusA, LTCL, FLCM, FAHA

President, ANU Students' Association

Mr M Jeganathan

President, Postgraduate and Research Students' Association

Mr J Swansson, BA(Hons) BSc(Hons) MSc Melb

Four persons appointed by the Governor-General

Ms G Carnegie, BEc Monash, MPA Harv, MAIA, FAICD

Mr I F Grigg AM, BA ANU

Dr M S Keating AC, BCom (Hons) Melb, PhD ANU, FRAIPA, FASSA

(1 position vacant)

One Member of Parliament appointed by the Governor-General on the nomination of the Prime Minister

Senator B Mason, BA LLB(Hons) ANU, MPhil Cantab

One Member of Parliament appointed by the Governor-General on the nomination of the Leader of the Opposition

Senator K Carr, BA (Hons) DipEd MA Melb

Two persons appointed by the Chief Minister of the ACT

Mr M Delaney, BA LaT

Ms T Kyprianou, BA LLB ANU

One person who is either a Dean or the Head of a Research School and is elected, in either case, by the Deans and the Heads of the Research Schools voting together

Professor D Evans, BSc Syd, PhD ANU, FRACI, FAA

One member of the academic staff of the Institute of Advanced Studies elected by the members of that staff

Dr I Morgan, BSc Melb, PhD Monash

One member of the academic staff of The Faculties elected by the members of that staff

Dr A Hyslop, BA Adel/LaT, PhD LaT

Two persons elected by Convocation

Ms B M Arndt, BSc ANU, MPsyCh NSW

Dr P McCullagh, MD Melb, DPhil Oxon

One member of the general staff of the University elected by members of that staff

Ms K Hill

A co-opted member

Mr J F Muir AO

2004 (from 1 July)

Chancellor

The Hon Emeritus Professor P E Baume AO, MB BS MD Syd, HonDLitt USQ, HonDUniv ANU, FRACP, FAFPHM, FRACGP (Hon)

Vice-Chancellor

Professor I W Chubb AO, MSc DPhil Oxon, Hon DSc Flinders

Seven members appointed by the Minister on the recommendation of the Nominations Committee of Council

The Hon Justice A C Bennett, BSc (Hons) PhD Syd, LLB NSW

Ms I R Atlas, BJuris; LLB Hons UWA, LLM Syd

Mr M Delaney, BA La T

Dr V W J FitzGerald, BEc UQ and Harv, PhD Harv

Ms R Hughes AO, BA Syd

Ms M D Letts, BA ANU

Mr J F Muir AO

One person who is either a Dean or the Head of a Research School and is elected, in either case, by the Deans and the Heads of the Research Schools voting together

Professor D Evans, BSc Syd, PhD ANU, FRACI, FAA (to 29.9.04)

Professor M Coper BALLB (Hons)Syd, PhD NSW (from 30 9 04)

One member of the academic staff of the Institute of Advanced Studies elected by the members of that staff

Dr I Morgan, BSc Melb, PhD Monash

One member of the academic staff of The Faculties elected by the members of that staff

Dr A Hyslop, BA Adel/LaT, PhD LaT

One member of the general staff of the University elected by members of that staff

Ms K Hill

One postgraduate student of the University elected by the postgraduate students of the University

Mr J Swansson, BA(Hons) BSc(Hons) MSc Melb (to 30.11.04)

Mr J Sass, BA (Hons) Monash, DipEd Melb (from 1.12.04)

One undergraduate student of the University elected by the undergraduate students of the University

Mr M Jeganathan (to 30.11.04)

Ms A Rao (from 1.12.04)

University Officers

Chancellor

The Hon Emeritus Professor Peter Erne Baume AO, MB BS MD Syd, HonDLitt USQ, HonDUniv ANU, FRACP, FAFPHM, FRACGP (Hon)

Pro-Chancellor

The Hon Justice Annabelle Claire Bennett, BSc (Hons), PhD Syd, LLB NSW

Vice-Chancellor

Professor Ian William Chubb AO, MSc DPhil Oxon, Hon DSc Flinders

Deputy Vice-Chancellor (Research)

Professor Lawrence Cram, BSc(Hons) BE (Hons) PhD Syd

Deputy Vice-Chancellor (Education)

Professor Malcolm Gillies, BA ANU, MA Camb, MMus PhD Lond, DipEd Qld, LMusA, LTCL, FLCM, FAHA

Pro Vice-Chancellor

Professor Robin Barrington Stanton, BE PhD NSW

Executive Director (Administration)

Dr David Rosalky, BSc Syd, PhD BEc ANU, FAIM

Chair, Board of the Institute of Advanced Studies

Professor Graham Farquhar, BSc ANU, BSc Hons Qld, PhD ANU, FAA, FRS

Chair, Board of The Faculties

Dr Ann L Kumar, BA (Oriental Studies), PhD ANU, FAHA

Dean, Faculty of Arts

Professor Adam Shoemaker, BA (Hons) Queen's, PhD ANU

Dean, Faculty of Asian Studies

Professor Anthony C Milner, BA Monash, MA PhD Cornell, FASSA

Dean, Faculty of Economics and Commerce

Professor Keith A Houghton, BCom Melb, MSc (Econ) Lond, PhD WAust, FCPA

Dean, Faculty of Engineering and Information Technology

Professor John Baird, BSc PhD ANU (to 18.9.04)

Dean, Faculty of Law

Professor Michael Coper, BA LLB Syd, PhD NSW, Barrister NSW, Barrister & Solicitor ACT

Dean, Faculty of Science

Professor Timothy Carlisle Brown, BSc Monash, PhD Camb

Dean, ANU Medical School

Professor Paul A Gatenby, MBBS Tas, PhD Syd, FRACP, FRCPA, MRACMA

Director, The John Curtin School of Medical Research

Professor Judith Whitworth AC, DSc MD PhD BS Melb FRACP

Director, Research School of Astronomy and Astrophysics

Professor Penny D Sackett, BS UNO, MS PhD UPIT

Director, Research School of Biological Sciences

Professor Jonathan Stone, BSc(Med) (Hons) PhD DSc Syd, FAAS, FAIB

Dean, Research School of Chemistry

Professor Denis Evans, BSc Syd, PhD ANU, FRACI, FAA

Director, Research School of Earth Sciences

Professor T Mark Harrison, BSc Univ of Brit.Col, PhD ANU

Director, Research School of Information Sciences and Engineering; Dean, Faculty of Engineering and Information Technology; Director, ANU Information Sciences and Engineering Institute

Professor John Richards, BE PhD NSW, FIREE, FIEAust, FIEEE, FTSE, CPEng (from 1.11.04)

Director, Research School of Pacific and Asian Studies

Professor James Fox, AB Harv, BLitt DPhil Oxon, KNAW, FASSA

Director, Research School of Physical Sciences and Engineering

Professor Jim Williams, BSc PhD, NSW, FAIP, FIEAust, FTSE

Director, Research School of Social Sciences

Professor Ian McAllister, BA CNAA, MSc PhD Strath, FASSA (to 1.2.04)

Professor Frank Jackson, BSc BA (Melb) PhD (La Trobe) FAHA FBA (from 2.3.04)

Director, Centre for Resource and Environmental Studies

Professor Robert Wasson, BA (Hons) Syd, PhD Macq (to 28.3.04)

Professor Mike Hutchinson, BSc (Hons), MSc PhD Dip CompSc Syd (acting from 29.3.04)

Dean, Mathematical Sciences Institute

Professor Alan Carey, BSc Syd, MSc Adel, DPhil Oxf

Director, Asia Pacific College of Diplomacy

Professor William Maley AM, BEc LLB MA ANU PhD UNSW

Director, Asia Pacific School of Economics and Government

Professor Andrew MacIntyre, BA (Hons) MA, PhD ANU

Director, Australian Primary Health Care Research Institute

Professor Nicholas Glasgow, MBChB, MD, FRNZGP, FRACGP, FACHPM

Director, Centre for Aboriginal Economic Policy Research

Professor Jon Altman, BA MA (Hons) Auck, PhD ANU

Director, Centre for Cross Cultural Research

Professor Howard Morphy, BSc MPhil Lond, PhD ANU

Director, Humanities Research Centre

Professor Ian Donaldson, BA Hons Melb MA Oxon, FAHA, FBA, FRSE

Director, National Centre for Epidemiology and Population Health

Dr Anthony McMichael, MB BS Adel, PhD Monash, FAFPHM FTSE

Executive Director, National Graduate School of Management

Professor Chong-Ju Choi, BA Seoul, MPA Harvard, MBA Insead, MPhil PhD Oxon

Director, Centre for Mental Health Research

Professor Anthony Jorm, BA Qld, GDipComp Deakin, MPychol PhD NSW, DSc ANU, FASSA

Director, Research Office

Dr Ian McMahon, BSc PhD ANU

Director, Office of Quality Enhancement and Statistical Services

Professor Marie Carroll, BA (Hons) PhD Otago, MAPS

Director, Student and Academic Services

Dr Patricia Miller, BSc (Hons), PhD Manc (to 15.6.04)

Ms Gillian Luck, BBus USQ, MPAdmin Griffith (from 16.6.04)

Dean of Students

Mr Selwyn Harcourt Cornish AM, BEc WAust

Director, Student Recruitment and International Education

Mr Timothy Beckett, MA Dub

Dean, The Graduate School

Dr John Hooper, BA (Hons) Syd, PhD Oxon

Director, Scholarly Information Services

Mr Vic Elliot, MA Victoria University of Wellington, MLitt Oxon, DipNZLS AALIA FNZLIA

Director, Corporate Information Services

Mrs Fay Gibbons, BSc Syd, GradDipCompStud CCAE

Director, Scholarly Technology Services

Dr Brian Molinari, BE WAust, PhD Camb

Head, Supercomputer Facility, Information Infrastructure Services

Dr Bob Gingold, BSc Monash, PhD ANU

Manager, University Records

Ms Diana Murrell, BSc UWA, LittB MPP ANU, Grad Dip Legal Studies UniCamb

Director, Human Resources

Mr Mark Clisby, BA (Hons) Adel, Grad.Dip (Adult & Further) Ed SACAE, M.Ed. (Human Resources Studies), UniSA

Director, Facilities and Services

Mr Warwick Raymond Williams, BSc NSW

Director, University Accommodation

Ms Marie Wensing

Head, Council and Boards Secretariat

Ms Jan O'Connor, BA James Cook

Director, Finance and Business Services

Mr Peter Shipp, BBus(Accounting) Tas, CPA (acting to 26.4.04)

Mr Davis Sturgiss, BComm UNSW, CA MAICD (from 27.4.04)

Manager, University Investment Office

Mr Neil Ffrench, BA(Accounting) UCA, CPA

Director, Marketing and Communications Division

Ms Lee-ann Norris, BA(Comm) CSU, MBA RMIT, BBus(Marketing) Monash

University Solicitor

Mr Kenneth Grime, BEc LLB Monash Barrister & Solicitor

Master, University House and Graduate House

Professor John Alan Richards, BE PhD NSW, FIREE, FIEAust, FIEEE, FTSE, CPEng

Officers for Ceremonial Occasions*Marshal*

Mr Selwyn Harcourt Cornish AM, BEc WAust

Esquire Bedell

Dr Kristina Murphy, BSc (Hons) PhD ANU

Review of 2004: Highlights

ANU – World Rankings

- ANU Quality Review completed with outstanding results. The Review Committee found:
“there is no doubt that... by all accepted international standards, the ANU is a distinguished, attractive and impressive institution of which Australia must be proud.” and
“..all the metrics confirmed that the ANU is very highly regarded, even when measured against the best institutions of higher learning, world-wide”
- More than 40% of assessors (invited to evaluate ANU Research) rated ANU as being in the top 25 universities in their field in the world.

(Extracts from: *ANU University with a Difference*, the report of the Committee, established by the Council of The Australian National University to evaluate the quality of the University's performance, September 2004).
- ANU has again been recognised as Australia's best university when ranked 16th in the world, in a comparison of the world's top 200 universities by the UK's *Times Higher Education Supplement*.
- Shanghai Jiao Tong University's Institute of Higher Education, ranked ANU as Australia's best university for the second consecutive year.

Growth

- Revenue from all sources for the year ended 2004 were just over \$597 million up from \$567 million in the previous year, representing an increase of 5.3%.
- Research income to the university provided from external sources continued to grow. ARC grants to the ANU are estimated to show an increase of 26% on 2003 figures. The ANU was awarded 6 out of the 25 awarded of the prestigious Federation Fellows in 2004 including:
 - Professor Richard Brent: *Exploring the Frontiers of Feasible Computation*;
 - Professor David Chalmers: *The contents of consciousness*;
 - Professor Simon Grant: *Optimism, Pessimism and Confidence – Their Economic Impacts*;
 - Professor David Hill: *Complex Networks: Dynamics, Optimisation and Control*;
 - Professor Stephen Hyde: *Self-assembly and complexity: networks and patterns from materials to markets*; and
 - Professor Chennupati Jagadish: *Ordered Semiconductor Nanostructures for Electronics and Photonics Applications*.

Returning after the fire

- Mt Stromlo Observatory Visitor's Centre reopened to the public in October 2004, after a period of closure resulting from the devastating bushfires of January 2003. The Australian Phenomics Facility was completed and became operational in 2004. The University's 800MHz NMR facility and workshop came online during the period.

Innovative Education

- The highly successful Bachelor of Philosophy (honours), offered by the Faculty of Science continued to attract top Australian students. This innovative model was extended to the Faculty of Arts, with an intake of students for the first time in 2004.
- The ANU Medical School enrolled their first students into the MBBS program in 2004.

Review of 2004: The Year of the Review of ANU Quality

A major focus for the ANU in 2004 was the conduct of an independent Quality Review. This Review arose partly in response to a decision of the Australian Government in 1995 to have conducted a "comprehensive review of the overall performance of the Institute of Advanced Studies in six years time." That review was deferred, following a subsequent decision of the Government in 1999 to phase-in, over three years, the admission of the Institute of Advanced Studies of the ANU into the competitive grants schemes of the Australian Research Council (ARC) and the National Health and Medical Research Council (NHMRC).

The Council of the ANU considered the possible scope of a further review of the Institute in late 2003. Given the present relationship between the Institute's research function with those of other staff in the University, and the distinctive character of ANU undergraduate and graduate education in a research-intensive environment, the Council decided to initiate a comprehensive, independent and external review of the quality of all The University's performance.

On 2 March 2004, the Australian Government Minister for Education, Science and Training, Dr Nelson, agreed to the proposed review, in the following terms:

"I agree that it is in the best interests of the ANU, and indeed of all Australian universities, to undergo a comprehensive quality review to determine whether its goals and objectives are being achieved effectively, and to facilitate continuous improvement."

The 2004 Review was designed to be a transparent process. It focused on the quality of outcomes, with reference to international and national benchmarks, and having regard to the purposes and goals of ANU. The Review was conducted by a committee of eminent persons, bringing breadth of perspective and depth of expertise and experience. See the Appendices of this Annual Report for details of the terms of reference, methodology and membership of the Review Committee.

The Review Committee was asked to scrutinise all available information about the performance of ANU across all its functions and all its parts. This information included self-assessments made by the ANU about its academic Faculties, Schools and Centres, and its service departments. The Committee was also asked to judge the extent to which the evidence available to it confirms or modifies the University's self-assessments.

Information provided to the Committee was drawn from publicly available and validated data sets, from external academic peer assessments, and from the results of surveys specifically undertaken for the Review by independent organisations.

The Committee's report on its findings has been widely circulated. A full copy of the Committee's report "*ANU: University with a Difference*" can be downloaded at http://info.anu.edu.au/Discover_ANU/Review

The response of the ANU Council to the Committee's report, including all its findings and recommendations, have also been made public and can be downloaded at www.anu.edu.au/cabs/council/agendaminutes2004.html under the September minutes.

This report brings together the available evidence demonstrating the quality of ANU performance across the functions of research, education and community service.

The Review process

In February 2004, the ANU determined the parameters of the assessment of its research activity for the current Review. It was decided that the research assessment would focus on the quality of research outcomes, measured in three ways:

- Comparative indicators of national success in research, including contestable research funding, membership of learned academies, and the resources committed to support research (reported on in Chapter 1);
- A major international peer-review exercise of the quality of University's research output in the twenty-one broad fields in which ANU conducts research;
- Comparative bibliometric measures of research outcomes, including number of publications per staff member, number of publications in high-impact journals, and citation indices.

The process of the peer review exercise was derived from that of the UK Research Assessment Exercise and modified to enable ANU research to be assessed against international benchmarks of excellence. Specifically:

- All researchers at the ANU during the calendar year 2003 were eligible to participate in the exercise. The research of 1350 academic staff was assessed, representing over 90% of research and teaching staff.
- Each researcher submitted for assessment what they regarded to be their five best publications over the period 1996–2003.¹ In all, some 6000 items were submitted.
- The full text (not just titles) of submitted items was made available to assessors through an on-line electronic database. This database contained most of the materials, but others were sent on CD or in hard copy by courier on request.

- Assessments would be made of the quality of these submitted items. However, contextual information such as overviews of ANU research in the discipline, descriptions of research school and faculties, and full publication lists of each researcher would be made available to assessors.
- Following the UK Research Assessment Exercise, assessors were asked to read a representative sample of the work they were sent, and then to make a broad judgement on all the work in their field, based on this sample as well as their prior knowledge of the work and the reputation of journals and publishers.

The results

The Review Committee reported that ANU is a unique Australian institution, undertaking research at international levels of distinction and offering a distinctive educational experience for undergraduate and graduate students. The ANU makes a significant contribution to the advancement of knowledge nationally and internationally.

It is the people who make the ANU what it is. The 2004 Quality Review was an evaluation of their work and their efforts as staff and students.

Among Australia's universities, the ANU is the leading institution on the following measures:

- Expenditure on research and experimental development per academic staff (FTE);
- Members of the Royal Society, Fellows of the British Academy and Fellows of Australian Academies;
- Federation Fellowships and ARC Fellowships;
- New ARC Discovery Grants;
- The proportion of academic staff holding higher degrees; and
- The proportion of the total student body undertaking a higher degree by research.

Some highlights of the 2004 Review and its external assessments confirmed that the ANU is truly a world-class research university:

- Some 285 internationally eminent researchers, having considered more than 7500 works submitted for assessment by 1500 ANU researchers, have rated 68% of that work as being within the top 25% of the world's best research and 29% as being in the top 5% of the world's best research.
- The Institute of Advanced Studies was rated as having 74% and 36% of assessed works in the top 25% and 5% of world research respectively.
- The Faculties were rated overall as having 62% and 21% in the top 25% and 5%. The University's Centres as a group were rated as having 60% and 24% in the top 25% and 5%.
- 123 of the assessors (44%) rated the ANU as being in the top 25 universities in the world in their field of research; a further 91 assessors (33%) rated the ANU in the top 50 universities in the world - that is 77% of assessors confirmed the world standing the ANU (as indicated by the Shanghai Jiao Tong analysis of 2003).
- In a number of fields of research the ANU was identified as having researchers and research groups at the forefront of the world's best research.
- Fields of research where 40% or more of the assessed research was rated as being in the top 5% in the world include: astronomy & astrophysics; asia-pacific studies; physical sciences; neurosciences; biochemistry and molecular genetics; information sciences and engineering; international relations, strategic and defence studies; demography; linguistics; and philosophy (62%).
- Fields of research where 75% or more of the assessed research was rated as being in the top 25% in the world include: astronomy & astrophysics; mathematical sciences; physical sciences; neurosciences; biochemistry and molecular genetics; clinical medicine and medical physiology; international relations, strategic and defence studies; history; philosophy; linguistics; and arts history and criticism (89%).
- By and large, the available bibliometric data reinforce the peer assessments by field of research.

- The contribution of the Institute of Advanced Studies to research training has grown significantly since the 1995 Review, from the some 200 higher degree research students (FTE) in 1992 and representing 25% of all ANU research student load, to 624 in 2003 and representing 43% of ANU higher degree research student load. Numbers grew further in 2004, with the Institute accounting for 47% of ANU higher degree student enrolments.
- The PhD cohort study of 2001 found that over 80% of ANU doctoral students successfully completed the degree, the highest PhD completion rate reported by Deans and Directors of Graduate Schools in Australia.
- The University's doctoral students recognise the high quality of the research experience at ANU (2004 PhD Focus Groups, 2004 Alumni survey, ANUDEQ 2000–2003), with the highest ratings among the Go8 research-intensive universities for intellectual climate, infrastructure, and thesis examination (PREQ 1999–2003).
- The ANU is committed to improving staff development for research degree supervisors with an expanded program of research supervision workshops for experienced supervisors which began in 2004; and to improving completion times for research students through more rigorous planning and feedback.

ANU administration also reviewed

The capacity of ANU to deliver high-quality research and education is dependent, to an important degree, on its administrative infrastructure and services. The Quality Review therefore included an assessment of the degree to which the University's administration is focused on supporting academic excellence.

In 2001, a detailed review of the University's administration was undertaken by Professor Ken McKinnon and Ms Sue Walker. It focused on developing a culture of collaboration between academic and administrative arms of the institution, and the enabling of academic outputs by the administrative systems and processes. The McKinnon Report set out a path of reform that was broadly adopted by the University.

The assessment carried out for the 2004 Quality Review involved an assessment by McKinnon and Walker of the progress made by the University in pursuit of the agenda established in 2001, and the present stance of the administration in support of academic activity

The Executive Summary of their report, completed in June 2004, is printed below:

In the two and a half years since the 2001 Review of Administration there has been a sea change in the administration of the ANU. In particular the concept of an 'enabling culture' has been widely adopted by staff in the administrative divisions both central and among the Faculties, Centres and Research Schools and in large part in the academic community. Morale has turned for the better and there is a noticeable 'can do' attitude replacing the previous sense of inefficiency and drift.

While culture change can only be part complete in the time since the 2001 Review the commitment of staff is energising, and giving impetus and clear direction to the multitude of specific reform processes undertaken within the University. Developments have been influenced, and for the most part given extra impetus by the leadership of the Vice-Chancellor, Professor Ian Chubb, who has led the redevelopment of the University's vision and near-term objectives, pointed the way to get the most benefit from government policy developments, gained the full cooperation of staff and led them through the changes proposed in the 2001 Review with vigour and imagination.

A more enabling culture is being realised through greater mutual respect, more positive attitudes, information sharing, cooperation, acceptance of the goal of continuous improvement, better processes and training and learning opportunities. Benchmarking of processes and practices against those in seven other universities has been introduced. New staff with a commitment to this culture have been recruited.

The framework of common University goals and infrastructure, common policies and devolved administrative operations advanced markedly in quality. Autonomous Research Schools, Centres and Faculties evaluated the changes as improving University administrative services. Coordination of central and devolved administrative units is still insufficient to resolve all of the problems of improvement of processes and the resolution of priorities for attention. The central administrative units showed the benefit of the wide array of initiatives undertaken since the Review. All are working with enthusiasm and application but different degrees of success so far. Quantitative benchmarking, in its early stage as yet, is giving further impetus to improvement.

Services of ANU in 2004

One of the strategic aims of the University is to provide intellectual leadership and service to the professions, industry, government and the wider society, nationally and in the local region.

In order to determine the extent of that leadership and service, a range of stakeholders were interviewed by independent consultants ANOP in June 2004. Persons interviewed included senior government officials, heads of research organisations, directors of major national institutions, and senior media representatives. This Report found:

The interviews reveal a strong and valued professional relationship between stakeholders and the ANU. The relationship is usually multi-faceted, going beyond contact with just one part of the university and reflecting the impact of being in the national capital. Importantly, several stakeholders believe that their relationship with the ANU has strengthened over recent years because of a more proactive attitude on the part of the ANU.²

The contributions of ANU to national policy development and national debates were highlighted. Stakeholders observed that "ANU researchers and academics are often called upon to comment about a range of current international and national issues". One suggested that "about half the people advising the Federal Government in one way or another, and the opposition, about the economy come from the ANU". While some suggested that "the ANU deserves a higher profile and recognition for its existing input", others see room for further improvement:

The University's contribution to policy is particularly valued when a Research School or Centre has come up with new ideas or approaches, has helped guide policy development with innovative thinking and research, and has helped promulgate the findings and outcomes. Some stakeholders suggest that the ANU can and should do more in this area, by being more proactive and engaging government in their ideas and projects.

The contribution of ANU to national government

ANU researchers act as consultants to a number of Government organisations such as Environment Australia, National Oceans Office, the Australian Greenhouse Office, Geoscience Australia, Federal Department of Health, the New South Wales National Parks and Wildlife Service and AusAID to name but a few. ANU researchers are often called on to provide policy advice for different levels of government and regularly serve on government review committees and advisory groups. This is further detailed throughout this annual report

Recent involvement has included: the Commonwealth Government Review of National Research Priorities; the Academic Advisory Board to the Prime Ministers Taskforce into Housing Affordability; the Oyster Research Advisory Committee; the ACT Bioscience Committee; the Federal Bushfire Research Advisory Group; the Australian Bureau of Statistics Advisory Committee for the Indigenous Social Survey and the General Social Survey; a six-year research partnership with the Australian Tax Office investigating tax system integrity; facilitating workshops reviewing the joint management arrangements at Uluru Kata Tjuta National Park with Environment Australia and traditional owners. The Commonwealth Foreign Affairs Council has a number of ANU researchers as members. Professor Warwick McKibbin serves as a member of the Board of the Reserve Bank of Australia.

In 2004 the Australian Research Council has also approved a range of new ANU research projects with important applications for government policy objectives, including work in defence and civilian industry technologies, climate change and water planning models, economic models for managing an ageing population and remaining competitive, and studies on maximising benefit from our relationships with China. The Table below summarises policy research project value by government portfolio, and gives some indication of the breadth of ANU public policy input.

Commonwealth Research Project Awards to the ANU, by Government Portfolio – 2002

Department	Project Awarded
Agriculture, Fisheries and Forestry	\$10,410,6590
National Drug Enforcement	\$121,803
Australian National Audit Office	\$4,400
Environment and Heritage	\$2,254,924
Education, Science and Training	\$11,172,360
DEWR	\$79,200
Family and Community Services	\$250,749
Foreign Affairs and Trade	\$8,688,342
Health and Ageing	\$16,749,261
Immigration, Multicultural and Indigenous Affairs	\$3,322,100
Industry, Tourism and Resources	\$2,683,520
Information, Technology and the Arts	\$2,891,207
Defence	\$1,964,639
The Treasury	\$3,300,000
Total	\$63,893,165.52

Source: ANU Capabilities and Performance Statement 2004, http://info.anu.edu.au/Discover_ANU/Review

ANU outreach

ANU staff are regularly consulted by the media, government, business and community for advice, research and expert analysis on matters of international, national and local importance. ANU researchers are featured in the media almost every day of the year. In 2003 (latest figures available), the ANU and/or ANU research was mentioned in more than 10,000 newspaper articles and on more than 4,000 occasions on radio or television. During 2004, the ANU hosted over 50 major public lectures, and conducted hundreds of less formal public lectures and briefing sessions. These events are attended by thousands of Australians each year, providing direct access to international leaders, authors, researchers and key decision makers.

Specific examples of outreach facilitated by ANU in 2004 include:

- The National Youth Science Forum, organised at ANU in January each year, helps shape the development of hundreds of the nation's brightest science students. Last years event involved almost 300 students.
- The Research School of Astronomy and Astrophysics (RSAA) operates Visitors' Centres at both Mount Stromlo and Siding Spring Observatories. The Mount Stromlo Observatory Visitors' Centre reopened to the public in October of 2004, after a period of closure due to the bush fires that afflicted Canberra in January of 2003. It is estimated that 9300 members of the public visited Siding Spring Observatory in 2004, and despite its reopening only late in 2004, that another 6000 visited Mount Stromlo.
- National Science Week exposes thousands of children and young people to the fundamentals of science in a tailored educational program. ANU hosted over 1500 students on campus during Science Week.
- The Faculty of Asian Studies, together with Asialink (Melbourne), convened the National Forum on Australian Asian Relations, on the 13 August 2004, an event that included speeches by Prime Minister Howard and Shadow Foreign Minister Rudd.
- In February 2004, the ANU hosted the first Asia-Pacific Week, which brought together over 300 postgraduate scholars, researchers and professionals from across the world to discuss economic, political, social and cultural issues related to the region. This successful project is to be repeated in 2005.
- The ANU Drill Hall Gallery is an important location for travelling exhibitions as well as exhibiting works from the ANU collection. It is open to the public and the 10-12 exhibition openings each year are attended by up to 200 people at a time.

The international service of the ANU

Through teaching, research, technology transfer, diplomacy and hands-on aid, ANU builds relationships with communities around the world. The University is involved in a diverse range of research, education and outreach programs internationally. ANU research and consultancy work addresses problems across a wide range of areas including HIV/AIDS, water quality, alternative energy technologies, public administration, and law reform. Highlights in 2004 included:

- The Asia-Pacific School of Economics and Government (APSEG), together with the Indonesian Centre for Strategic and International Studies, hosted a discussion in Jakarta in May 2004 on the Indonesian elections, which included participation by candidates for the presidency.
- The ANU Centre for the Public Awareness of Science (CPAS) is the UNESCO Centre for Scientific Communication and has initiated science communications programs in several countries, including training programs at the National Museum in Thailand.
- The Asia Pacific College of Diplomacy was established at ANU as a joint initiative between the Australian Government and ANU to educate diplomats from the region, and offered its Master's program for the first time in 2004. The College is the first of its kind in the Southern Hemisphere. The ANU also hosts the International Centre of Excellence in Asia-Pacific Studies, funded by the Australian Government, and the National Europe Centre, funded by the European Commission.

Many ANU researchers are involved in the work of international bodies, such as the United Nations, the World Bank, the International Monetary Fund, the Asian Development Bank, and the World Health Organisation, and hold positions such as that of official observers of the Indonesian Presidential elections.

¹ In the case of early-career researchers (post-doctoral fellows and junior lecturers), up to five research items could be submitted.

² ANOP Research Services Pty Ltd, June 2004, Quality Review of the ANU – Stakeholder Interviews about the University's Community Service Role, available at http://info.anu.edu.au/Discover_ANU/Review/

Council and Council Committees

Number of meetings and Members' attendance for the period 01/1/04 to 31/12/04

Council

Number of Meetings: 6

<i>Name of Member</i>	<i>Number of Attendances</i>
The Hon Emeritus Professor P Baume (Chair)	5
The Hon Justice A Bennett	6
Professor I Chubb	6
Ms B Arndt (to 30.6.04)	1
Ms I Atlas (from 1.7.04)	3
Ms G Carnegie (to 30.6.04)	1
Senator K Carr (to 30.6.04)	0
Professor M Coper (from 30.9.04)	1
Mr M Delaney	6
Professor D Evans (to 29.9.04)	5
Dr V FitzGerald (from 1.7.04)	3
Professor M Gillies (to 30.6.04)	3
Mr I Grigg (to 30.6.04)	3
Professor J Hearn (to 6.02.04)	0
Professor L Cram (from 10.2.04 to 30.6.04)	3
Ms K Hill	5
Ms R Hughes (from 1.7.04)	3
Dr A Hyslop	6
Mr M Jeganathan (to 30.11.04)	5
Dr M Keating (to 30.6.04)	1
Ms T Kyprianou (to 30.6.04)	3
Ms M Letts (from 1.7.04)	3
Senator B Mason (to 30.6.04)	1
Dr P McCullagh (to 30.6.04)	3
Dr I Morgan	6
Mr J F Muir	6
Ms A Rao (from 1.12.04)	1
Mr J Sass (from 1.12.04)	1
Mr J Swansson (to 30.11.04)	5

Executive Committee of Council

Number of Meetings: 2

<i>Name of Member</i>	<i>Number of Attendances</i>
The Hon Emeritus Professor P Baume (Chair)	2
The Hon Justice A Bennett	2
Professor I Chubb	2

Mr M Delaney	2
Dr A Hyslop (from 30.9.04)	1
Mr M Jeganathan (from 1.7.04)	1
Dr P McCullagh (to 30.6.04)	1
Dr I Morgan (to 29.9.04)	1
Mr J F Muir	2
Mr J Swansson (to 30.6.04)	1

Academic Board

Number of Meetings: 4

<i>Name of Member</i>	<i>Number of Attendances</i>
Professor I Chubb (Chair)	4
Professor T Brown (to 26.2.04)	1
Professor A Carey	3
Professor M Coper	3
Professor L Cram (from 27.2.04)	3
Professor I Donaldson (to 26.2.04)	1
Ms A Doust (from 27.2.04)	3
Dr A Edwards (to 26.2.04)	1
Professor R Elliman (from 27.2.04)	2
Professor D Evans (to 26.2.04)	1
Professor G Farquhar	1
Professor J Fox (to 26.2.04)	1
Professor P Gatenby	2
Professor M Gillies (from 27.2.04)	1
Professor N Glasgow (to 26.2.04)	1
Ms K Hill (to 26.2.04)	1
Professor K Houghton (to 26.2.04)	1
Professor F Jackson	2
Mr M Jeganathan	4
Dr A Kumar	1
Dr A Lowe	3
Professor A MacIntyre	3
Professor W Maley (to 26.2.04)	1
Mr C Marshall (from 27.2.04)	3
Mr G Mayo (to 26.2.04)	1
Professor A McIntosh (to 26.2.04)	1
Professor A McMichael (to 26.2.04)	1
Professor A Milner (to 26.2.04)	1
Professor H Morphy (to 26.2.04)	1
Professor J Richards	4
Dr D Rosalky (from 27.2.04)	3

Professor P Sackett (to 26.2.04)	1
Dr S Scott	2
Professor A Shoemaker (to 26.2.04)	1
Professor R Stanton (from 27.2.04)	3
Ms A Steed (from 27.2.04)	3
Professor J Stone (to 26.2.04)	1
Mr J Swansson	4
Professor J Williams (to 26.2.04)	1
Professor J Whitworth	1
Professor I Wright (from 27.2.04)	1

Representatives for Academic Board Members

Dr P Cheng (for Professor Chong-ju Choi)	1
Professor M Hutchinson (for Professor R Wasson)	1
Professor S Redman (for Professor J Whitworth)	1
Professor J Schwab (for Professor J Altman)	1

Finance Committee

Number of meetings: 6

<i>Name of Member</i>	<i>Number of Attendances</i>
Mr J F Muir	6
Justice A C Bennett	5
Professor I Chubb	6
Mr M Delaney	5
Mr R A Ferguson	3
Mr I Grigg (to 30.6.04)	4
Mr A R Hedley	5
Professor K Houghton	6
Dr M Keating (to 30.6.04)	4

Audit Committee

Number of Meetings: 6

<i>Name of Member</i>	<i>Number of Attendances</i>
Professor K Houghton (Chair)	6
Mr D Lawler (Deputy Chair)	4
Mr J F Muir	6
Dr I Morgan	5
Professor P Perkins	4

Honorary Degrees Committee

Number of Meetings: 4

<i>Name of Member</i>	<i>Number of Attendances</i>
The Hon Em Professor P E Baume (Chair)	4
The Hon Justice A C Bennett	3
Professor I Chubb	4
Professor L Cram	4
Mr M Delaney	1
Dr V FitzGerald (from 7.9.04)	2
Professor M Gillies	3
Dr J Hooper	4
Ms R Hughes (from 7.9.04)	2
Dr M S Keating (to 30.6.04)	0
Ms T Kyprianou (to 30.6.04)	1
Ms L O'Rance (to 30.11.04)	3
Dr N Peterson	3
Ms A Rao (from 1.12.04)	1
Dr S Von Caemmerer	4

Alternates for absent members

Dr V FitzGerald (vacancy on committee)	1
Ms R Hughes (vacancy on committee)	1
Dr A Hyslop (for Dr N Peterson)	1
Mr J F Muir (for Mr M Delaney)	1

Committee on Conditions of Appointment of the Vice-Chancellor and Deputy Vice-Chancellor

Number of Meetings: Committee Members conferred as required throughout 2004 regarding conditions of appointment of the Vice-Chancellor.

Name of Member

The Hon Em Professor P Baume (Chair)
The Hon Justice A Bennett
Mr J F Muir

Emergency Appointment (Vice-Chancellor) Committee

Number of Meetings: 0

University Statistics

Compiled by: Statistical Services, Office of Quality Enhancement and Statistical Services, ANU, February 2005

SUMMARY OF TABLES

CONTEXT

Table 1 Revenue Base (% of total) for 2000 to 2004

RESEARCH

Table 1 International Peer Review Ratings for the ANU by 21 Disciplines (RFCD format) – results by discipline and academic group

Table 2 International Peer Review Ratings for the ANU by 21 Disciplines – Assessors Rank the ANU among the Top Universities in their Fields

Table 3 Research Grants and Publications⁽¹⁾

Table 4 Summary of Research Activity for 2004⁽¹⁾

Table 5 Research Grants by Academic Unit for 2004⁽¹⁾

EDUCATION

Table 1 EFTSU by Program for 2000 to 2004

Table 2 Median UAI Score for 2000 to 2004

Table 3 Undergraduate Operating Grant Load Against Government Target for 2000 to 2004

Table 4 Higher Degree and Postgraduate Male/Female Student Enrolments for 2001 to 2004

Table 5a Research and Education Activity by Academic Unit for 2004

Table 5b Summary of Research and Education by Academic Unit for 2004

BENCHMARKING

Table 1 Expenditure on Research and Experimental Development for 2000 and 2002

Table 2 Shanghai Jiao Tong University Ranking for 2004

Table 3 Membership of Academies for 2002

Table 4 ARC Fellowships for 2004 and 2005

Table 5 ARC Discovery Grants for 2004 and 2005

Table 6 ARC Linkage – Projects for 2004 and Round 1 2005

Table 7 NHMRC Project Grants for 2004

Table 8 NHMRC Program Grants for 2004

Table 9 Academic Staff Holding Higher Degrees for 2003 and 2004

Table 10 Higher Degree Research EFTSU for 2002 to 2004

Table 11 Higher Degree Research Completions for 2002 and 2003

(1) Values contained in these tables are identified on a grants awarded basis not income received and as such are not extracted from the audited statements.

CONTEXT

Table 1: Revenue Base (% of total) for 2000 to 2004

Year ended 31 December	2000	2001	2002	2003	2004
Operating grant (including HECS & PELS)	56.8	51.7	54.3	53.4	51.2
Research funding	9.5	10.0	14.0 ⁽¹⁾	10.5 ⁽²⁾	13.0
Full fee-paying student income	4.2	4.8	6.0	6.8	6.9
State grants	0.2	0.2	0.6	0.3	2.1
Consultancy, contract research and private grants	6.0	6.4	7.0	6.8	7.2
Investment income	12.4	10.3	5.4	7.4	9.8
Other fees and charges	9.9	15.7	11.0	13.7	8.7
Other revenue	1.0	0.9	1.7	1.1	1.2

HECS – Higher Education Contribution Scheme, PELS – Postgraduate Education Loans Scheme,
 ARC – Australian Research Council, NHMRC – National Health and Medical Research Council.

(1) The first entry of 25% of the IAS staff into ARC and NHMRC: and,

(2) The second cohort entry of IAS staff into ARC and NHMRC.

RESEARCH

Table 1: International Peer Review Ratings for the ANU by 21 Disciplines (RFCD format) – results by discipline and academic group

Discipline	Top 25%	Top 5 %	Papers ⁽¹⁾	Staff ⁽²⁾	Assessors ⁽³⁾
Asian and Pacific Studies	68.8	28.1	746	216	25
Astronomy and Astrophysics	75.3	41.3	123	27	9
Australian Indigenous Studies	62.6	33.5	216	76	6
Biological Sciences	68.1	23.8	327	75	15
Biomedical Research	60.7	27.8	542	153	22
Business and Commerce	53.2	18.3	175	48	9
Chemical Sciences	71.1	31.4	306	75	21
Earth Sciences	63.5	19.1	369	103	6
Economics	55.1	23.6	419	118	15
Environmental Research	48.4	14.0	205	62	11
History and Archaeology	75.3	33.2	487	147	20
Information Sciences and Engineering	63.3	32.6	371	114	9
Language and Culture	75.2	27.8	471	176	24
Law	62.6	20.9	437	173	12
Mathematical Sciences	83.8	37.5	250	62	9
Philosophy	89.2	62.1	129	34	2
Physical Sciences	83.9	42.5	560	133	17
Policy and Political Sciences	70.4	26.6	438	130	13
Psychology and Mental Health	55.8	21.8	186	50	7
Studies in Human Society	63.1	32.6	600	184	18
Visual Arts	67.0	8.0	62	26	3
TOTALS	67.8	29.2	Source: ANU: University with a Difference 2004		

RFCD – Research Fields, Courses and Disciplines Classification

(1) Total number of papers available for assessment.

(2) Some staff contributed work to more than one discipline.

(3) These do not include a small number of assessors who reviewed units that were not part of the research or teaching and research units of the University.

RESEARCH

Table 2: International Peer Review Ratings for the ANU by 21 Disciplines – Assessors Rank the ANU among the Top Universities in their Fields

ANU Disciplines	ANU Ranked within Top 25 Universities worldwide	ANU Ranked within Top 50 Universities worldwide	ANU Ranked within Top 100 Universities worldwide
Asian and Pacific Studies	15	6	2
Astronomy and Astrophysics	7	2	
Australian Indigenous Studies	3	1	
Biological Sciences	11	3	
Biomedical Research	6	13	2
Business and Commerce		1	7
Chemical Sciences	4	13	3
Earth Sciences	4	1	
Economics	4	3	7
Environmental Research	3	7	1
History and Archaeology	9	7	
Information Sciences and Engineering	5	2	1
Language and Culture	10	6	3
Law	6	5	
Mathematical Sciences	7	1	
Philosophy	2		
Physical Sciences	10	6	
Policy and Political Sciences	4	5	
Psychology and Mental Health	3	3	1
Studies in Human Society	10	3	2
Visual Arts	1	2	
TOTALS	124	90	29

Source: ANU Capabilities and Performance Statement 2004

RESEARCH

Table 3: Research Grants and Publications

Research Grants 2003 ⁽¹⁾ (\$'000)	
Australian Competitive Research Grants	55,635
Other Public Sector Research Funding	14,470
Industry and Other Funding for Research	24,954
CRC Funding	4,036
TOTAL RESEARCH GRANTS	99,096
Research Publications 2003 (rounded)	
Books	65
Book Chapters	371
Journal Articles	1,390
Conference Papers	253
UNWEIGHTED TOTAL	2,080
WEIGHTED TOTAL ⁽²⁾	2,340

(1) Source for Grants and Publications data: ANU return to 2003 DEST Higher Education Research Data Collection.

(2) Books are weighted as 5 and other categories as 1.

RESEARCH

Table 4: Summary of Research Activity for 2004

RESEARCH GRANTS	2004⁽¹⁾ (\$)
LIEF/SII/MNRF ⁽²⁾	7,902,000
ARC	46,751,170
NHMRC	12,708,670
Other	39,394,406
Total	106,756,246

ARC— Australian Research Council, NHMRC—National Health and Medical Research Council.

(1) Based on 2004 projections as at 18 November 2004.

(2) LIEF – Linkage Infrastructure, Equipment and Facilities (ARC Funding);

SII – Systemic Infrastructure Initiative (DEST Research Grant); MNRF - Major National Research Facilities

STAFF	2004
ARC Grants/Fellowships	443
NHMRC Grants/Fellowships	88
Total Academic Staff (FTE) ⁽³⁾	1354
Staff: FTE, Level C+ ⁽³⁾	754
ARC & MHMRC Grants/Staff (FTE, Level C+)	0.7
Weighted Research Publications (2003)	2,340

(3) Based on DEST 31 March 2004 submissions.

RESEARCH

Table 5: Research Grants by Academic Unit for 2004 ⁽¹⁾

Academic Unit		ARC (\$)	NHMRC (\$)	Other (\$)	TOTAL (\$)
RSAA	Research School of Astronomy and Astrophysics	1,667,191	0	3,119,765	4,786,956
RSBS	Research School of Biological Sciences	4,979,673	431,535	3,975,603	9,386,811
RSC	Research School of Chemistry	2,979,896	0	711,408	3,691,304
RSES	Research School of Earth Sciences	3,013,920	0	992,598	4,006,518
RSISE	Research School of Information Sciences and Engineering	1,082,996	0	256,708	1,339,704
JCSMR	John Curtin School of Medical Research	1,121,424	6,979,396	10,091,895	18,192,715
RSPAS	Research School of Pacific and Asian Studies	2,578,115	0	2,213,833	4,791,948
RSPHYSSE	Research School of Physical Science and Engineering	8,098,426	124,500	3,214,327	11,437,253
RSSS	Research School of Social Sciences	2,768,965	0	3,746,739	6,515,704
CRES	Centre for Resource and Environmental Studies	457,587	0	1,801,861	2,259,448
Arts	Faculty of Arts	1,556,851	0	382,200	1,939,051
Asian Studies	Faculty of Asian Studies	297,006	0	289,848	586,854
FEC	Faculty of Economics and Commerce	654,817	0	197,504	852,321
FEIT	Faculty of Engineering and Information Technology	2,541,942	0	958,813	3,500,755
Law	Faculty of Law	308,707	0	691,810	1,000,517
Science	Faculty of Science	7,799,137	763,468	3,255,185	11,817,790
ANUMS	ANU Medical School	0	555,910	1,507,244	2,063,154
APSEG	Asia-Pacific School of Economics and Government	20,113	0	1,231,307	1,251,420
CAEPR	Centre for Aboriginal Economic Policy Research	346,857	0	508,325	855,182
CCCR	Centre for Cross Cultural Research	1,365,120	0	82,199	1,447,319
CMHR	Centre for Mental Health Research	0	1,980,000	1,753,779	3,733,779
HRC	Humanities Research Centre	438,131	0	92,126	530,257
NCEPH	National Centre for Epidemiology and Population Health	257,481	1,873,861	2,981,786	5,113,128
NGSM	National Graduate School of Management	60,000	0	150,000	210,000
MSI	Mathematical Sciences Institute	2,341,815	0	107,700	2,449,515
Other Units	Other Units (including APHCR, CEDAM)	15,000	0	2,981,843	2,996,843
TOTALS		46,751,170	12,708,670	47,296,406	106,756,246

(1) Based on 2004 projections as at 18 November 2004.

EDUCATION

Table 1: EFTSU by Program for 2000 to 2004

Program	Domestic/International	2000	2001	2002	2003	2004 ⁽¹⁾
Higher Degree Research	Domestic	881	864	873	972	1185
	International	273	279	312	375	436
Higher Degree Research Total		1154	1142	1184	1347	1621
Postgraduate Coursework	Domestic	596	584	644	838	954
	International	465	518	462	600	794
Postgraduate Coursework Total		1062	1102	1106	1438	1748
Undergraduate Coursework	Domestic	5557	5557	6096	6223	6377
	International	357	508	715	1018	1113
Undergraduate Total		5914	6066	6811	7241	7490
Non-award	Domestic	16	22	21	24	36
	International	59	93	94	103	156
Non-award Total		76	115	115	127	192
TOTALS		8205	8425	9216	10152	11051

(1) Based on DEST submissions 1 and 2 (Full Year 2004). Includes 80 EFTSU of Medical School load.

Table 2: Median UAI Score for 2000 to 2004 (excluding UAIs greater than 100⁽¹⁾)

	2000	2001	2002	2003	2004
Median score	89.60	89.05	86.74	88.85	90.40

(1) UAIs greater than 100 represent a forced offer rank (that is, a value artificially set high so that an offer is to be made).

Table 3: Undergraduate Operating Grant Load Against Government Targets for 2000 to 2004

	2000	2001	2002	2003	2004 ⁽¹⁾
Actual load	5557	5557	6086	6213	6375
DEST Target	5845	5865	5880	5940	6030
Over(under)-enrolment	-4.9%	-5.2%	3.5%	4.6%	5.7%

(1) Based on DEST submissions 1 and 2 (Full Year 2004). Includes 80 EFTSU of Medical School load.

Note: The ANU was 4.9% under-enrolled against the 2000 DEST undergraduate operating grant target of 5,845 EFTSU. However, load increased substantially in 2002 and subsequently, with the 2004 EFTSU 5.7% over-enrolled against the DEST target of 6030 EFTSU.

EDUCATION

Table 4: Higher Degree and Postgraduate Male/Female Student Enrolments for 2001 to 2004⁽¹⁾

2001					
Program Type	Female	Male	Total	% Female	% Male
Doctorate by Research	580	704	1284	45.2%	54.8%
Master's by Research	48	58	106	45.3%	54.7%
Higher Degree Coursework	461	595	1056	43.7%	56.3%
Other Postgraduate	438	371	809	54.1%	45.9%
Total	1527	1728	3255	46.9%	53.1%
2002					
Program Type	Female	Male	Total	% Female	% Male
Doctorate by Research	627	761	1388	45.2%	54.8%
Master's by Research	42	58	100	42.0%	58.0%
Higher Degree Coursework	588	759	1347	43.7%	56.3%
Other Postgraduate	477	437	914	52.2%	47.8%
Total	1734	2015	3749	46.3%	53.7%
2003					
Program Type	Female	Male	Total	% Female	% Male
Doctorate by Research	700	889	1589	44.1%	55.9%
Master's by Research	39	69	108	36.1%	63.9%
Higher Degree Coursework	778	1002	1780	43.7%	56.3%
Other Postgraduate	662	571	1233	53.7%	46.3%
Total	2179	2531	4710	46.3%	53.7%
2004					
Program Type	Female	Male	Total	% Female	% Male
Doctorate by Research	837	1047	1884	44.4%	55.6%
Master's by Research	54	72	126	42.9%	57.1%
Higher Degree Coursework	944	1245	2189	43.1%	56.9%
Other Postgraduate	732	647	1379	53.1%	46.9%
Total	2567	3011	5578	46.0%	54.0%

(1) Student count by program type as at 31 March.

Students enrolled in two programs within program type are only counted once.

EDUCATION

Table 5a: Research and Education Activity by Academic Unit for 2004

Academic Unit		Total Staff (FTE)	Academic Staff (FTE)	General Staff (FTE)	Total Student EFTSU ⁽¹⁾	Higher Degree Research (EFTSU) ⁽¹⁾	Higher Degree Coursework (EFTSU) ⁽¹⁾	Other Postgraduate (EFTSU) ⁽¹⁾	Under-graduate (EFTSU) ⁽¹⁾	Non-award (EFTSU) ⁽¹⁾
RSAA	Research School of Astronomy and Astrophysics	80	26	54	30	30				
RSBS	Research School of Biological Sciences	198	95	103	62	62				
RSC	Research School of Chemistry	120	52	68	63	63				
RSES	Research School of Earth Sciences	133	53	80	44	44	0.4			
RSISE	Research School of Information Sciences and Engineering	44	26	18	54	54				
JCSMR	John Curtin School of Medical Research	288	92	197	74	74				
RSPAS	Research School of Pacific and Asian Studies	184	88	96	324	167	100	51		6
RSPHYSSE	Research School of Physical Science and Engineering	210	113	98	82	82				
RSSS	Research School of Social Sciences	165	87	78	107	97	9	1		1
CRES	Centre for Resource and Environmental Studies	33	17	16	45	45				
Arts	Faculty of Arts	261	178	84	2755	275	88	55	2319	17
Asian Studies	Faculty of Asian Studies	36	30	7	536	51	18	12	448	7
FEC	Faculty of Economics and Commerce	115	90	25	2102	88	97	32	1823	62
FEIT	Faculty of Engineering and Information Technology	93	43	50	659	49	53	8	549	0.4
Law	Faculty of Law	84	49	35	1238	18	77	355	784	4
Science	Faculty of Science	241	147	94	1785	240	40	35	1462	8
ANUMS	ANU Medical School	26	10	16	85	3			82	
APSEG	Asia-Pacific School of Economics and Government	48	21	28	408	61	171	105		71
CAEPR	Centre for Aboriginal Economic Policy Research	17	13	5	5	5				
CCCR	Centre for Cross Cultural Research	27	19	8	26	26				
CMHR	Centre for Mental Health Research	25	10	14	9	9				
HRC	Humanities Research Centre	11	7	5	12	12				
NCEPH	National Centre for Epidemiology and Population Health	51	33	18	47	24	22			
NGSM	National Graduate School of Management	28	12	17	431	17	384	17		14
MSI	Mathematical Sciences Institute	33	27	6	23	23				
Other Units	Other Units (including ANIP, CEDAM)	836	19	817	46	3	5	12	24	2
TOTALS		3387	1354	2033	11051	1621	1065	683	7490	192

(1) EFTSU based on DEST submissions 1 and 2 (Full Year 2004). Note: All figures have been rounded.

EDUCATION

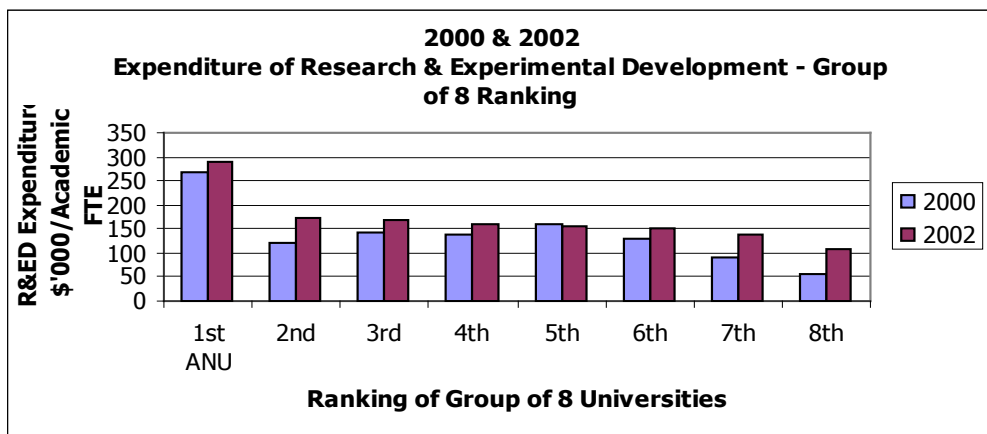
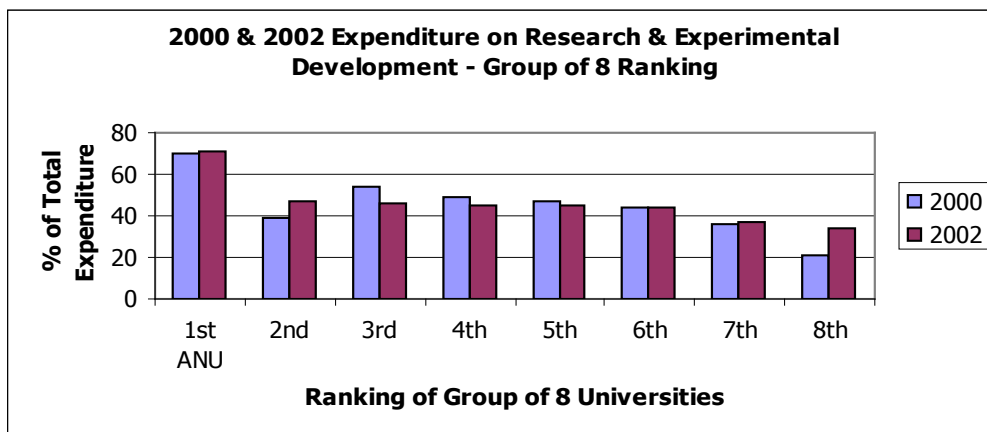
Table 5b: Summary of Research and Education by Academic Unit for 2004

Academic Unit Group	Total Staff (FTE)	Academic Staff (FTE)	General Staff (FTE)	Total Student EFTSU ⁽¹⁾	Higher Degree Research (EFTSU) ⁽¹⁾	Higher Degree Coursework (EFTSU) ⁽¹⁾	Other Postgraduate (EFTSU) ⁽¹⁾	Under-graduate (EFTSU) ⁽¹⁾	Non-award (EFTSU) ⁽¹⁾
Institute of Advanced Studies	1455	649	807	886	718	109	52	0	7
Faculties	856	546	310	9159	724	374	497	7465	98
Centres	240	140	99	961	176	577	122	0	85
Other Units	836	19	817	46	3	5	12	24	2
TOTALS	3387	1354	2033	11051	1621	1065	683	7490	192

(1) EFTSU based on DEST submissions 1 and 2 (Full Year 2004). Note: All figures have been rounded.

BENCHMARKING

Table 1: Expenditure on Research and Experimental Development for 2000 and 2002



Notes:

The Research Expenditure data for 2002 are the latest data available.

No data collection occurred in 2003 as the collection is based on a survey done every two years.

The data for 2004 will not be available until later in 2005.

Sources:

- (1) DEST Finance data sources: For 2000 www.dest.gov.au/archive/highered/statistics/finance/2000/Revised_Finance2000.xls
For 2002 www.dest.gov.au/highered/statistics/finance/2002/finance2002.xls
- (2) DEST Research Expenditure data sources:
For 2000, Research Expenditure 2000 – Selected Higher Education Statistics www.dest.gov.au/highered/statistics/researchexpend/research_2000.pdf
For 2002, Research Expenditure 2002 – Selected Higher Education Statistics www.dest.gov.au/highered/statistics/researchexpend/Research2002.pdf
- (3) DEST Staff data sources: For 2000 www.dest.gov.au/highered/statistics/staff2000.xls Table 6
For 2002 www.dest.gov.au/highered/statistics/staff/02/staff_2002.xls Table 7

BENCHMARKING

Table 2: Shanghai Jiao Tong University Citation Index for 2004

2004 Rank	Institution	Country
Group of Eight Universities		
53	The Australian National University	Australia
82	The University of Melbourne	Australia
101-152	The University of Queensland	Australia
101-152	The University of Sydney	Australia
153-201	The University of New South Wales	Australia
153-201	The University of Western Australia	Australia
202-301	Monash University	Australia
202-301	The University of Adelaide	Australia
Overseas		
1	Harvard University	USA
3	University of Cambridge	UK
14	Tokyo University	Japan
24	University of Toronto	Canada
32	New York University	USA
47	The University of Edinburgh	UK
51	University of Munich	Germany
60	The University of Bristol	UK
61	McGill University	Canada
86	Boston University	USA
97	Nagoya University	Japan

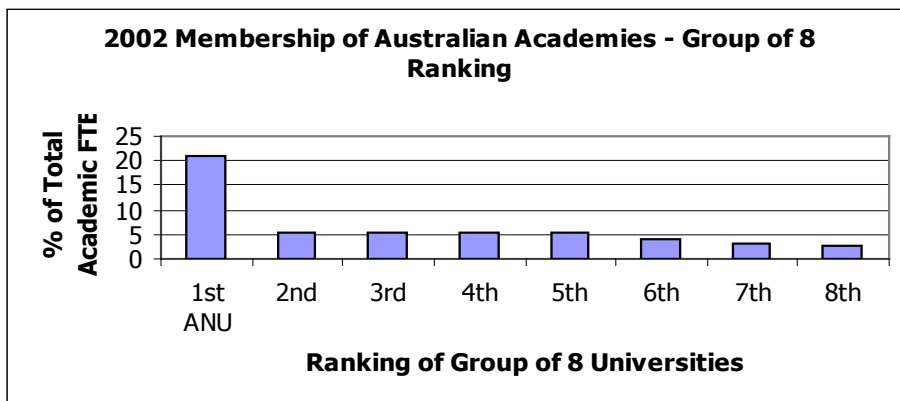
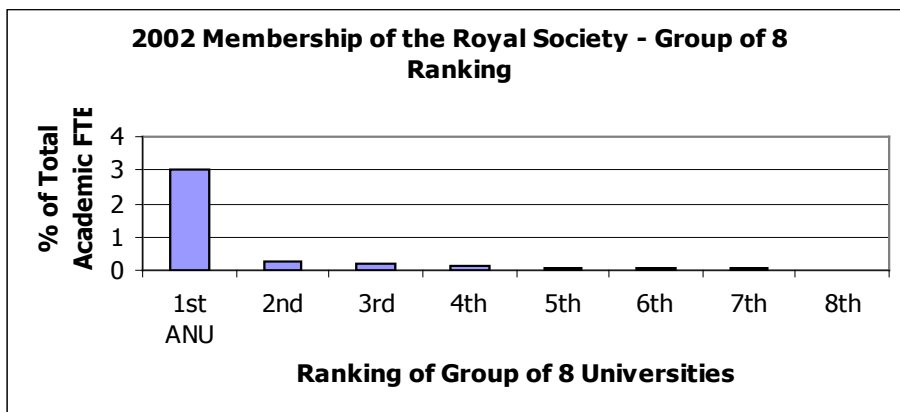
Note:

Group rankings are listed in alphabetical order.

Source: Shanghai Jiao Tong University, Academic Ranking of World Universities – 2004
([http://ed.sjtu.edu.cn/rank/2004/top500\(1-100\).htm](http://ed.sjtu.edu.cn/rank/2004/top500(1-100).htm))

BENCHMARKING

Table 3: Membership of Academies for 2002



Notes:

Some double-counting due to dual affiliations. In addition, for some affiliations which were not entirely clear, best estimate was made, erring on side of affiliation with a university if at all reasonable to do so.

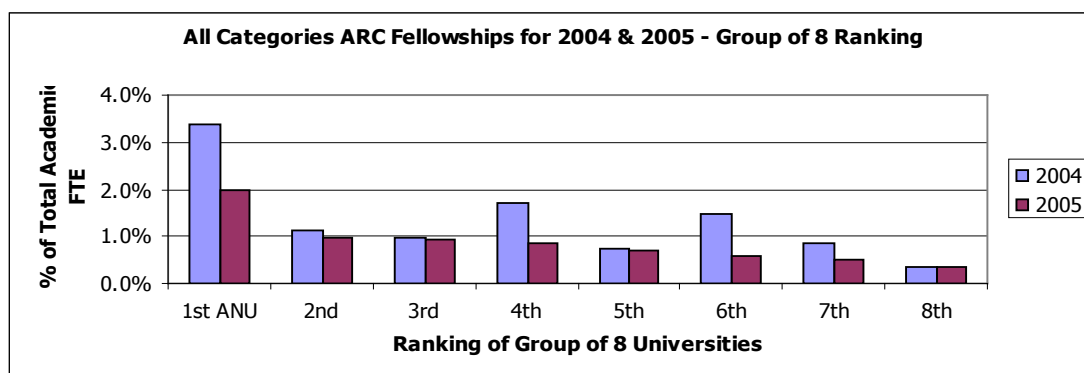
The data for 2002 are the latest data available.

Sources:

- (1) Royal Society Fellowship at August 2002 www.royalsoc.ac.uk/fellowsindex.cfm
- (2) Aust Academy of Science Fellowship at August 2002 www.science.org.au/academy/fellows/fellow.htm
- (3) Aust Academy of Technological Sciences and Engineering Fellowship at August 2002 www.atse.org.au
- (4) Aust Academy of Social Sciences Fellowship at August 2002 <http://coombs.anu.edu.au/ASAA/>
- (5) Aust Academy of Humanities Fellowship at August 2002 www.humanities.org.au/Fellows/overview.htm
- (6) DEST 2002 Staff data source: www.dest.gov.au/highered/statistics/staff/02/staff_2002.xls Table 7
- (7) ANU 2002 Staff data source: Statistical Services, ANU

BENCHMARKING

Table 4: ARC Fellowships for 2004 and 2005



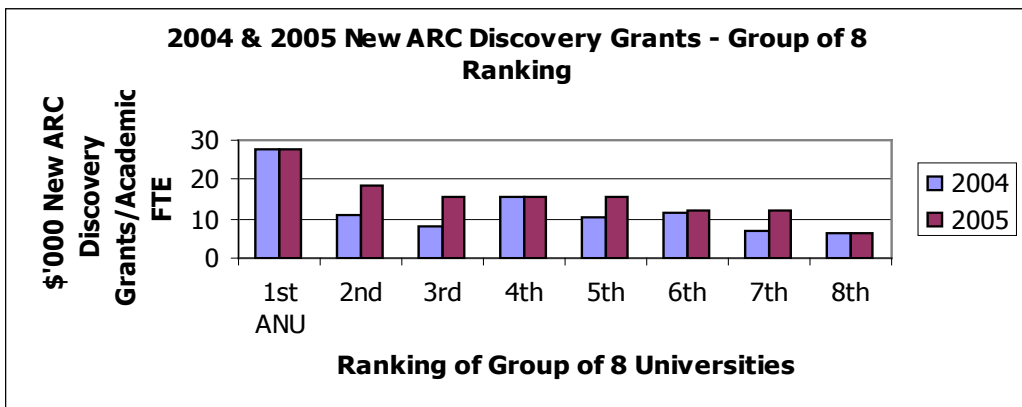
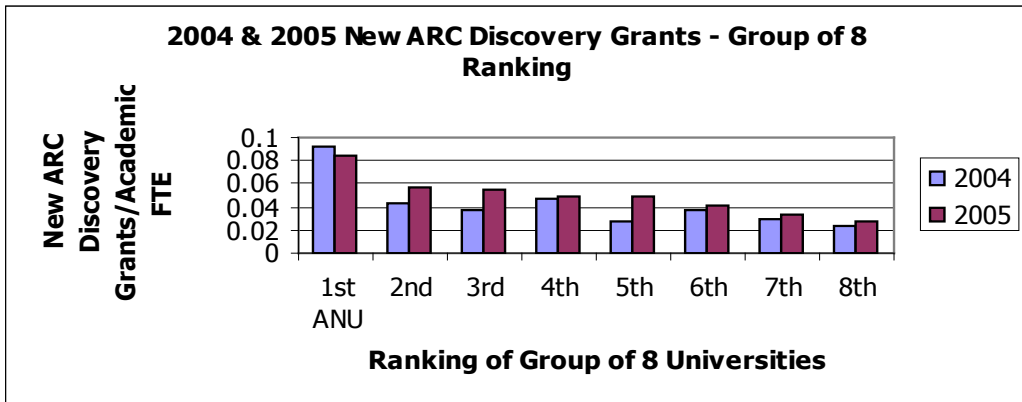
ARC Fellowships cover the following categories: APRF – Australian Postdoctoral Research Fellowship, ARF – Australian Research Fellowship, QEII – Top 15 of the ARF, APF Australian Professorial Fellowship, APD Australian Postdoctoral Fellowship.

Sources:

- (1) ARC Fellowships data source: www.arc.gov.au/funded_grants/selection_discovery_fellow.htm
- (2) DEST Staff data sources: For 2003 www.dest.gov.au/highered/statistics/staff/03/staff2003.xls Table 7
For 2004 www.dest.gov.au/highered/statistics/staff/04/2004_staff.xls Table 7
- (3) ANU 2003 & 2004 Staff data source: Statistical Services, ANU

BENCHMARKING

Table 5: ARC Discovery Grants for 2004 and 2005



Note:

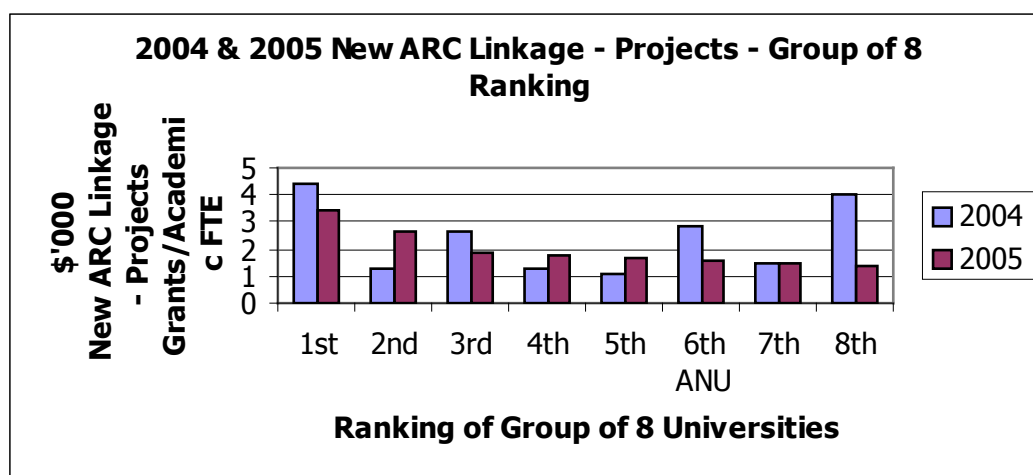
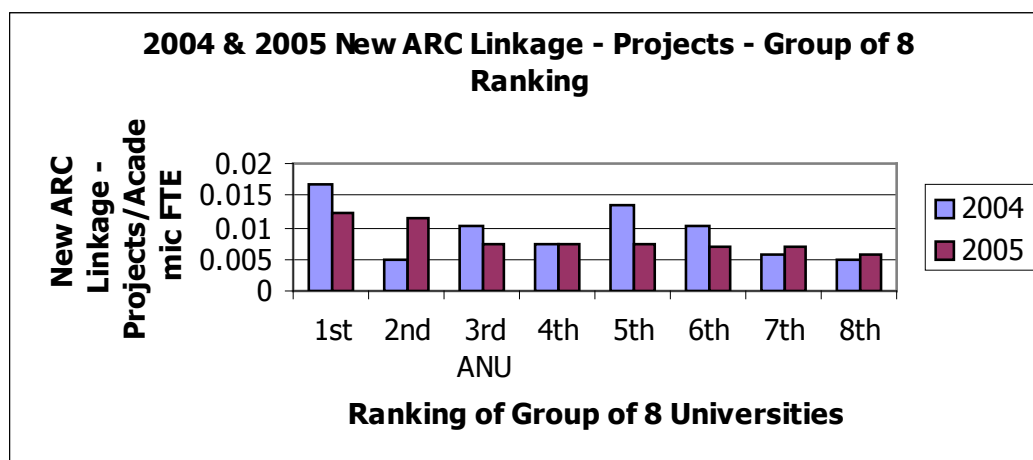
\$ Value of new grants is the total for all years of the grants commencing in 2004 and 2005.

Sources:

- (1) ARC Discovery Grants data sources: For 2004 www.arc.gov.au/pdf/DP2004_selection_report.pdf
For 2005 www.arc.gov.au/pdf/DP05_Selection_Rpt_for_Web_final.pdf
- (2) DEST Staff data sources: For 2003 www.dest.gov.au/highered/statistics/staff/03/staff2003.xls Table 7
For 2004 www.dest.gov.au/highered/statistics/staff/04/2004_staff.xls Table 7
- (3) ANU 2003 and 2004 Staff data source: Statistical Services, ANU

BENCHMARKING

Table 6: ARC Linkage – Projects for 2004 and Round 1 2005



Notes:

For 2005, the data cover only the first round of funding with results for the second round likely to be announced in June.

The data covers Linkage – Projects that involve project, Australian Postgraduate Awards Industry (APAI), and/or fellowship funding (L-P) and those that involve only APAI stipends (L-A).

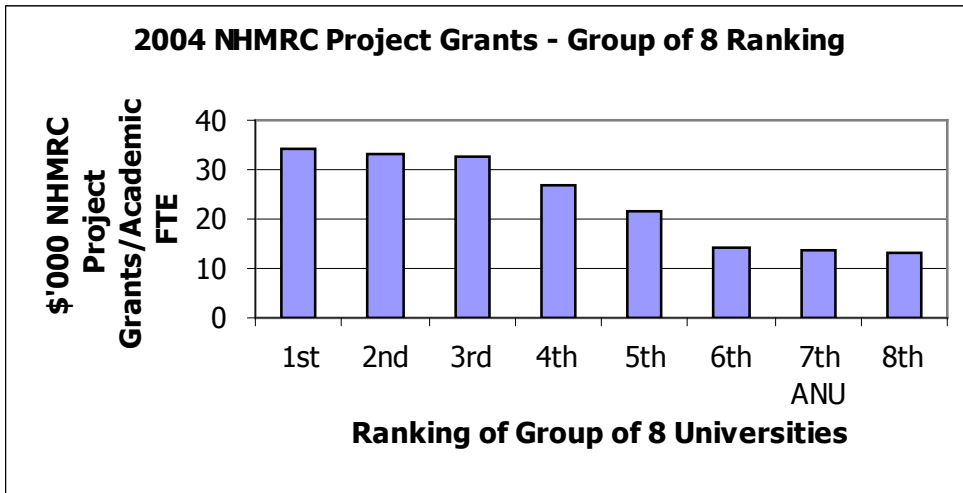
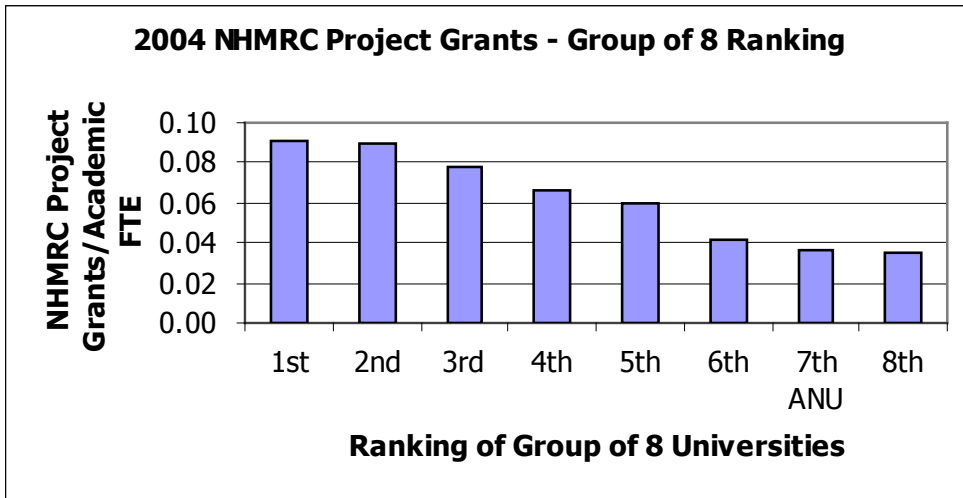
\$ Value of new grants is the total for all years of the grants commencing in 2004 and 2005 (Round 1).

Sources:

- (1) ARC Linkage – Projects data source: www.arc.gov.au/funded_grants/selection_linkage.htm
- (2) DEST Staff data sources: For 2003 www.dest.gov.au/highered/statistics/staff/03/staff2003.xls Table 7
For 2004 www.dest.gov.au/highered/statistics/staff/04/2004_staff.xls Table 7
- (3) ANU 2003 & 2004 Staff data source: Statistical Services, ANU

BENCHMARKING

Table 7: National Health and Medical Research Council (NHMRC) Project Grants for 2004



Notes:

Includes all NHMRC Project Grants that received funding in 2004.
 \$ Value of grants is the total funding for all years of the grants.

The data include NHMRC Project Grants funded through the Primary Health Care Research, Evaluation and Development Strategy funded by the Policy and Evaluation Branch, Department of Health and Ageing.

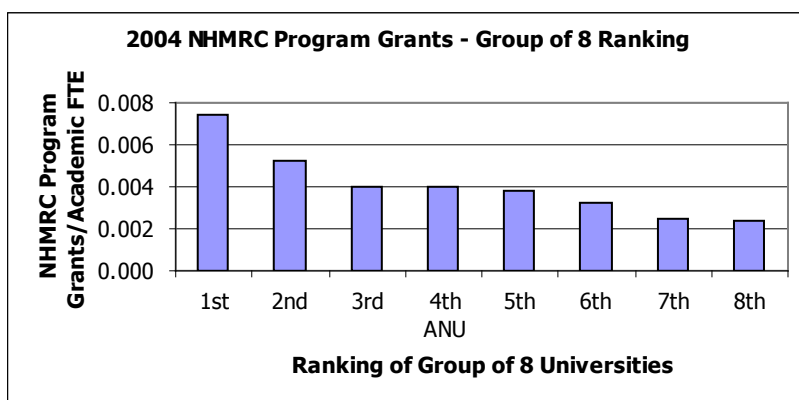
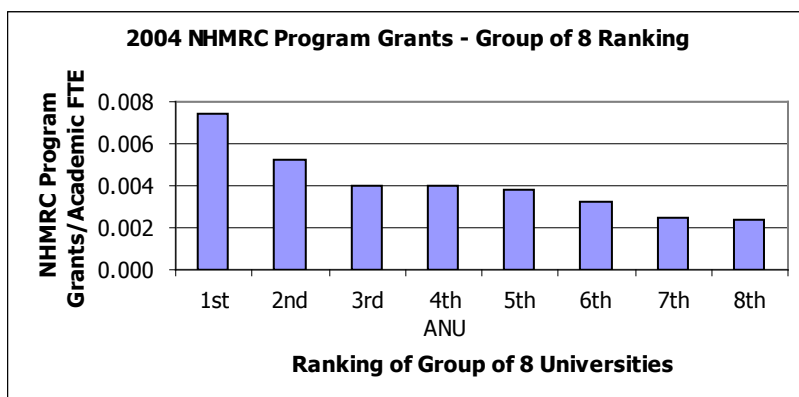
Funding from NHMRC for the ANU may be lower than would otherwise be the case as the data includes grants commencing before the IAS became fully eligible for NHMRC funding in 2003. The ANU entered partially into the scheme in 2002 and fully in the 2003 rounds.

Sources:

- (1) NHMRC Project Grants data source: <http://www7.health.gov.au/nhmrc/funding/projects.htm>
- (2) DEST 2003 Staff data source: www.dest.gov.au/highered/statistics/staff/03/staff2003.xls Table 7
- (3) ANU 2003 Staff data source: Statistical Services, ANU

BENCHMARKING

Table 8: National Health and Medical Research Council Program Grants for 2004



Notes:

Includes all NHMRC Program Grants, Diabetes Collaborative Research Grants and International Collaborative Research Grants that received funding in 2004.

\$ Value of grants is the total funding for all years of the grants.

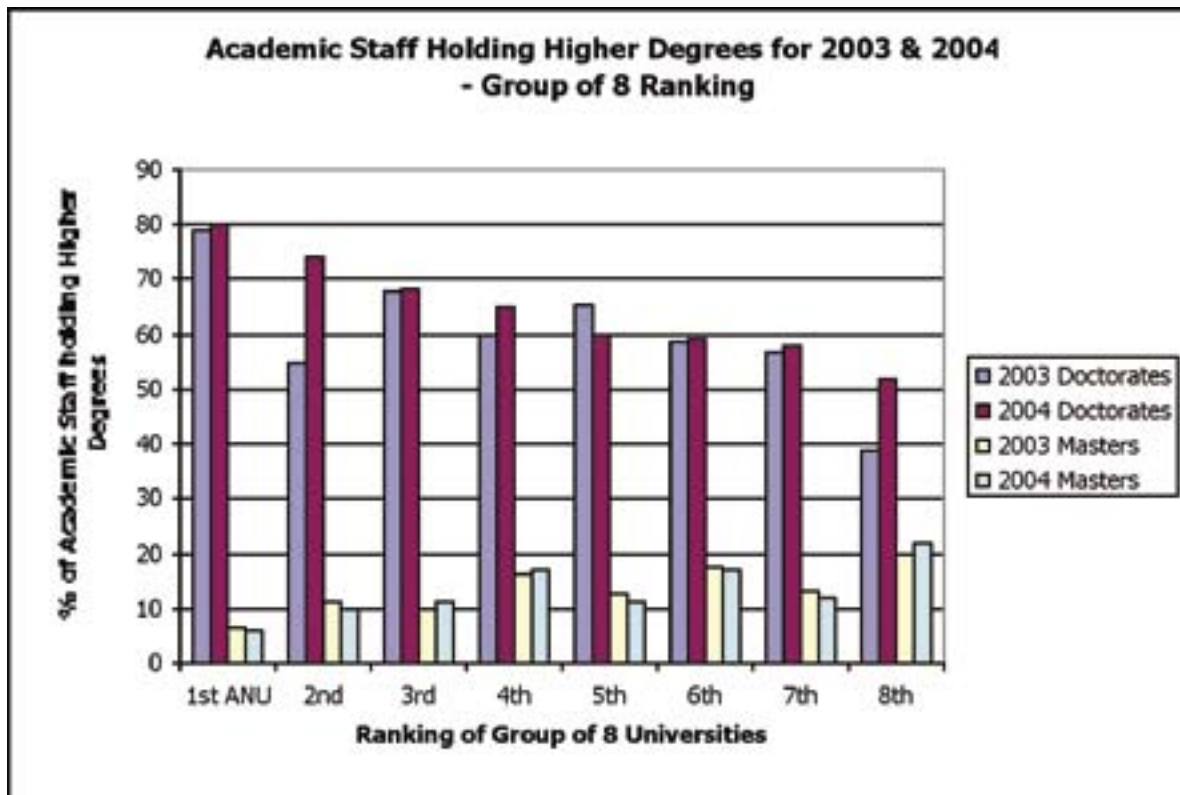
Funding from NHMRC for the ANU may be lower than would otherwise be the case as the data includes grants commencing before the IAS became fully eligible for NHMRC funding in 2003. The ANU entered partially into the scheme in 2002 and fully in the 2003 rounds.

Sources:

- (1) NHMRC Program Grants data source: <http://www7.health.gov.au/nhmrc/funding/programs.htm>
- (2) DEST 2003 Staff data source: www.dest.gov.au/highered/statistics/staff/03/staff2003.xls Table 7
- (3) ANU 2003 Staff data source: Statistical Services, ANU

BENCHMARKING

Table 9: Academic Staff Holding Higher Degrees for 2003 and 2004



Note:

There are no breakdowns available to distinguish research from coursework for any of these postgraduate levels.

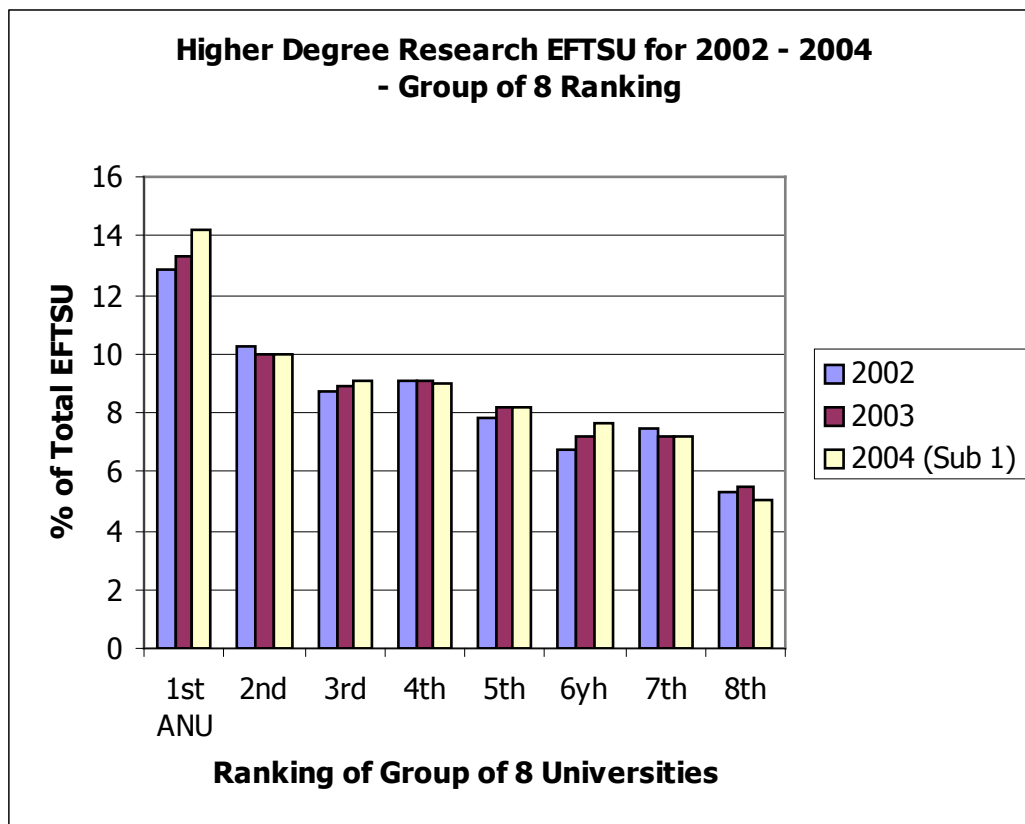
Sources:

(1) DEST 2003 Staff data source: www.dest.gov.au/highered/statistics/staff/03/staff2003.xls Table 24

(2) ANU 2003 Staff data source: Statistical Services, ANU

BENCHMARKING

Table 10: Higher Degree Research EFTSU as a % share of total EFTSU for 2002 to 2004

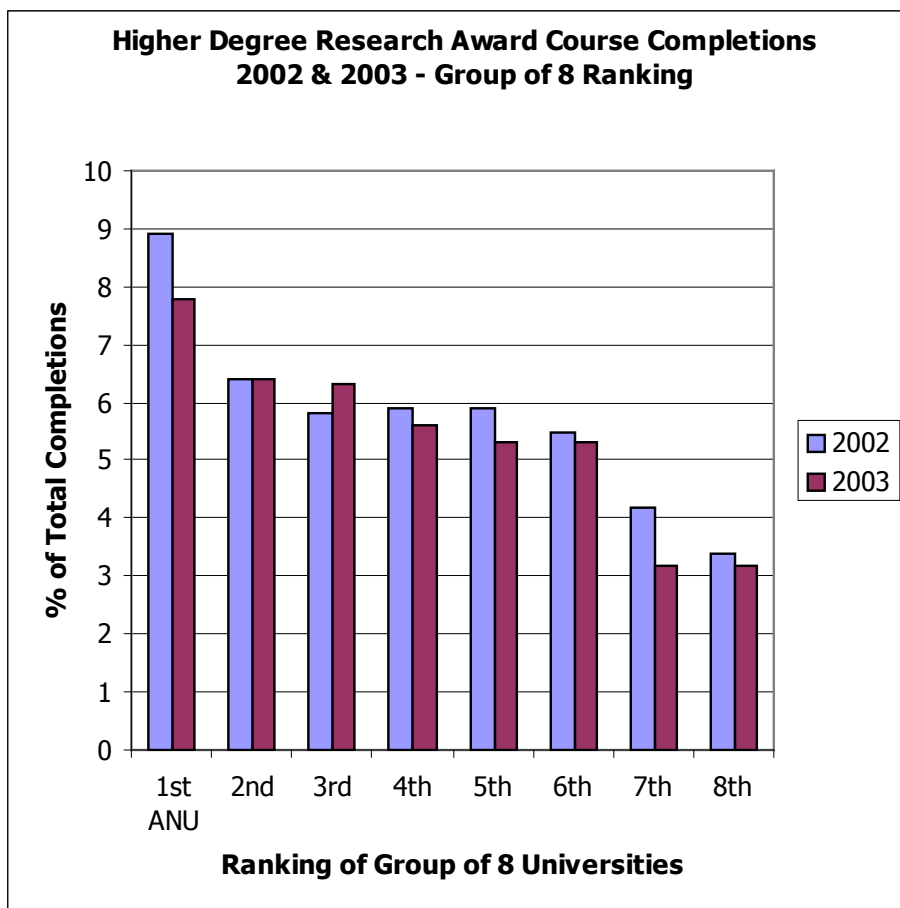


Sources:

- (1) DEST Student data source: Actual Student Load (EFTSU) for All Students by State, Institution and Broad Level of Course, for 2002, 2003 and 2004 (Submission 1) www.dest.gov.au/highered/statpubs.htm – studpubs
- (2) ANU Student data source: Statistical Services, ANU

BENCHMARKING

Table 11: Higher Degree Research Completions as a Percentage of Total Award Completions for 2002 and 2003



Sources:

(1) DEST Completions data source:

2002 – Award Course Completions for All Students by State, Institution and Broad Level of Course
www.dest.gov.au/highered/statistics/students/03/student_tables/tables.htm Appendix 2.8

2003 – Award Course Completions for All Students by State, Institution and Broad Level of Course
www.dest.gov.au/highered/statistics/students/04/tables/Appendices.xls Appendix 3.8

(2) ANU 2002 Et 2003 Completions data source: Statistical Services, ANU

Auditor-General's Report



INDEPENDENT AUDIT REPORT

To the Minister for Education, Science and Training

Matters relating to the Electronic Presentation of the Audited Financial Report

This audit report relates to the financial statements published in both the annual report and on the website of the Australian National University for the year ended 31 December 2004. The Council of the Australian National University responsible for the integrity of both the annual report and its web site.

The audit report refers only to the statements named below. It does not provide an opinion on any other information which may have been hyperlinked to/from the audited financial statements.

If the users of this report are concerned with the inherent risks arising from electronic data communications they are advised to refer to the hard copy of the audited financial statements in the Australian National University's annual report.

Scope

The financial statements and Directors' responsibility

The financial statements comprise:

- Statement by Directors;
- Statements of Financial Performance, Financial Position and Cash Flows;
- Schedules of Commitments and Contingencies; and
- Notes to and forming part of the Financial Statements

for both the Australian National University and the consolidated entity, for the year ended 31 December 2004. The consolidated entity comprises both the Australian National University and the entities it controlled during that year.

The members of the Australian National University Council are responsible for the preparation and true and fair presentation of the financial statements in accordance with the Finance Minister's Orders made under the *Commonwealth Authorities and Companies Act 1997*. This includes responsibility for the maintenance of adequate accounting records and internal controls that are designed to prevent and detect fraud and error, and for the accounting policies and accounting estimates inherent in the financial statements.

Audit approach

I have conducted an independent audit of the financial statements in order to express an opinion on them to you. My audit has been conducted in accordance with the Australian National Audit Office Auditing Standards, which incorporate the Australian Auditing and Assurance Standards, in order to provide reasonable assurance as to whether the financial statements are free of material misstatement. The nature of an audit is influenced by factors such as the use of professional judgement, selective testing, the inherent limitations of internal control, and the availability of persuasive, rather than conclusive, evidence. Therefore, an audit cannot guarantee that all material misstatements have been detected.

While the effectiveness of management's internal controls over financial reporting was considered when determining the nature and extent of audit procedures, the audit was not designed to provide assurance on internal controls.

I have performed procedures to assess whether in all material respects the financial statements present fairly, in accordance with the Finance Minister's Orders made under the *Commonwealth Authorities and Companies Act 1997*, Accounting Standards and other mandatory financial reporting requirements in Australia, a view which is consistent with my understanding of the Australian National University's and the consolidated entity's financial position and of its performance as represented by the statements of financial performance and cash flows.

The audit opinion is formed on the basis of these procedures, which included:

- examining, on a test basis, information to provide evidence supporting the amounts and disclosures in the financial statements; and
- assessing the appropriateness of the accounting policies and disclosures used, and the reasonableness of significant accounting estimates made by management.

Independence

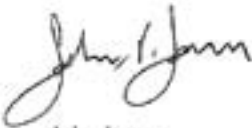
In conducting the audit, I have followed the independence requirements of the Australian National Audit Office, which incorporate Australian professional ethical pronouncements.

Audit Opinion

In my opinion, the financial statements:

- (i) have been prepared in accordance with the Finance Minister's Orders made under the *Commonwealth Authorities and Companies Act 1997* and applicable Accounting Standards; and
- (ii) give a true and fair view, of the matters required by applicable Accounting Standards and other mandatory financial reporting requirements in Australia, and the Finance Minister's Orders, of the financial position of the Australian National University and the consolidated entity as at 31 December 2004, and of their performance and cash flows for the year then ended.

Australian National Audit Office



John Jones
Executive Director
Delegate of the Auditor-General

Canberra
4 April 2005

Statement by directors



THE HON EMERITUS PROFESSOR PETER BAUME AO
Chancellor

Canberra ACT 0200 Australia
Telephone: +61 2 6125 2113
Facsimile: +61 2 6125 8524
Email: Chancellor@anu.edu.au
www.anu.edu.au

CONSOLIDATED FINANCIAL STATEMENTS FOR YEAR ENDED 31 DECEMBER 2004

STATEMENT BY DIRECTORS

In the opinion of the Council the Financial Statements for the University and the consolidated Financial Statements for the Economic Entity have been prepared based on properly maintained financial records and give a true and fair view of the matters required by Schedule 1 of the Commonwealth Authorities and Companies (Financial Statements for reporting periods ending on or after 30 June 2004) Orders made under the Commonwealth Authorities and Companies Act 1997 (FMO) and the Guidelines for the Preparation of Annual Financial Reports for the 2004 Reporting Period by Australian Higher Education Institutions issued by the Department of Education, Science and Training.

In our opinion, at the date of this statement there are reasonable grounds to believe that the University will be able to pay its debts as and when they become due and payable.

P E BAUME
Chancellor

I W CHUBB
Vice-Chancellor

1 April 2005

Financial Statements

THE AUSTRALIAN NATIONAL UNIVERSITY

STATEMENT OF FINANCIAL PERFORMANCE FOR THE YEAR ENDED 31 DECEMBER 2004

	Notes	Consolidated		University	
		2004 \$'000	2003 \$'000	2004 \$'000	2003 \$'000
REVENUES FROM ORDINARY ACTIVITIES					
Commonwealth Government financial assistance					
Commonwealth Government Grants	2	350,778	311,156	350,778	311,156
Higher Education Contribution Scheme					
Commonwealth payments	2	28,017	19,919	28,017	19,919
Student contributions		6,630	5,991	6,630	5,991
Commonwealth Loan Programmes	2	4,372	3,711	4,372	3,711
State Government financial assistance	3	12,551	1,490	12,551	1,490
Fees and charges	4	41,198	35,407	41,198	35,407
Investment Income	5	58,643	38,746	58,432	38,573
Consultancy and contract research		49,193	41,018	42,813	35,416
Sales of goods and services	6	27,731	24,290	27,731	23,870
Gains on disposal of assets	12	317	320	317	314
Other revenue	7	28,285	53,946	24,332	47,724
Total revenues from ordinary activities		607,715	535,994	597,171	523,571
EXPENSES FROM ORDINARY ACTIVITIES					
(excluding borrowing cost expense)					
Employees	8	316,230	277,079	313,978	274,653
Services	9	216,232	192,874	208,533	183,580
Depreciation and amortisation	10	39,444	36,371	39,179	36,012
Write-down of assets	11	95	270	83	134
Losses on disposal of assets	12	1,426	4,365	1,426	4,365
Interest	13	6	4	6	4
Other	14	31,134	44,588	31,134	44,629
Total expenses from ordinary activities		604,567	555,551	594,339	543,377
(excluding borrowing cost expense)					
Borrowing cost expense	16	2,101	-	2,101	-
Net operating surplus (deficit) from ordinary activities before the effect of the change in accounting policy for grant recognition		1,047	(19,557)	731	(19,806)
Cumulative effect of change in accounting policy for recognition of grant income	1.2	48,995	-	48,995	-
Net operating surplus (deficit) from ordinary activities		50,042	(19,557)	49,726	(19,806)
Net credit/(debit) from/(to) asset revaluation reserve	17	(3,518)	4,678	(3,518)	4,678
Other net credit/(debit) from/(to) equity	17	624	9,535	624	9,535
TOTAL CHANGES IN EQUITY OTHER THAN THOSE RESULTING FROM TRANSACTIONS WITH OWNERS AS OWNERS		47,148	(5,344)	46,832	(5,593)

The above statement should be read in conjunction with the accompanying notes.

THE AUSTRALIAN NATIONAL UNIVERSITY

STATEMENT OF FINANCIAL POSITION
AS AT 31 DECEMBER 2004

	Notes	Consolidated		University	
		2004 \$'000	2003 \$'000	2004 \$'000	2003 \$'000
ASSETS					
FINANCIAL ASSETS					
Cash	18	134,762	117,877	131,341	112,859
Receivables	19	42,108	52,361	39,593	50,452
Investments	20	736,686	607,440	743,871	614,597
TOTAL FINANCIAL ASSETS		913,556	777,678	914,805	777,908
NON-FINANCIAL ASSETS					
Land, buildings and infrastructure	21	878,891	737,038	871,961	730,458
Plant and equipment	21	130,037	133,482	129,939	133,386
Inventories	22	2,801	6,653	1,592	5,576
Intangibles	23	104	113	-	-
Other	24	10,157	10,404	10,077	10,184
TOTAL NON-FINANCIAL ASSETS		1,021,990	887,690	1,013,569	879,604
TOTAL ASSETS		1,935,546	1,665,368	1,928,374	1,657,512
LIABILITIES					
INTEREST BEARING LIABILITIES					
Loans Payable	25	114,722	-	114,722	-
TOTAL INTEREST BEARING LIABILITIES		114,722	-	114,722	-
PROVISIONS AND PAYABLES					
Employee Benefits	26	488,455	462,553	487,988	462,078
Suppliers	27	23,407	20,749	22,764	19,883
Other	28	12,243	90,337	7,682	84,493
TOTAL PROVISIONS AND PAYABLES		524,105	573,639	518,434	566,454
TOTAL LIABILITIES		638,827	573,639	633,156	566,454
TOTAL ASSETS AND LIABILITIES		1,296,719	1,091,729	1,295,218	1,091,058
EQUITY					
PARENT ENTITY INTEREST					
Reserves	17	834,119	676,277	831,171	673,843
Accumulated surpluses	17	462,600	415,452	464,047	417,215
TOTAL EQUITY		1,296,719	1,091,729	1,295,218	1,091,058
CURRENT LIABILITIES		79,541	149,031	74,331	142,388
NON-CURRENT LIABILITIES		559,286	424,608	558,825	424,066
CURRENT ASSETS		244,212	219,624	237,051	211,636
NON-CURRENT ASSETS		1,691,334	1,445,744	1,691,323	1,445,876

The above statement should be read in conjunction with the accompanying notes.

THE AUSTRALIAN NATIONAL UNIVERSITY

STATEMENT OF CASH FLOWS
FOR THE YEAR ENDED 31 DECEMBER 2004

	Notes	Consolidated		University	
		2004 \$'000	2003 \$'000	2004 \$'000	2003 \$'000
OPERATING ACTIVITIES					
Cash received					
Revenues from Government:					
Commonwealth Government financial assistance		284,601	303,524	284,601	303,524
Other Commonwealth financial assistance		43,291	32,957	43,291	32,957
State Government financial assistance		12,478	2,973	12,478	2,973
Higher Education Contribution Scheme:					
Student payments		6,631	5,300	6,631	5,300
Higher Education Trust Fund		28,017	18,447	28,017	18,447
Post Graduate Loans Scheme		5,034	3,049	5,034	3,049
Research grants and other contracts		47,056	38,095	40,676	40,186
Interest and other investment earnings		35,451	13,571	35,240	26,184
Dividends received		27,227	29,366	27,227	16,580
Other receipts		117,575	134,463	113,337	118,134
Total cash received		607,361	581,745	596,532	567,334
Cash used					
Payments to employees and pensioners		(321,142)	(292,218)	(318,907)	(289,792)
Direct investment expenses		(5,164)	(2,486)	(6,172)	(2,486)
Borrowing Expenses		(691)	-	(691)	-
Payments to services		(244,151)	(211,373)	(232,987)	(201,174)
Total cash used		(571,148)	(506,077)	(558,757)	(493,452)
NET CASH FROM OPERATING ACTIVITIES	30	36,213	75,668	37,775	73,882
INVESTING ACTIVITIES					
Cash received					
Proceeds from sales of property, plant and equipment		1,178	1,323	1,178	1,317
Loan repayments		53	2	53	1,002
Proceeds from sale and maturity of investments		759,736	654,788	759,736	654,788
Total cash received		760,967	656,113	760,967	657,107
Cash used					
Loan Advances		(1,000)	-	(1,000)	-
Acquisition of property, plant and equipment		(59,960)	(72,578)	(59,897)	(72,562)
Acquisition of investments		(834,335)	(659,527)	(834,363)	(659,503)
Total cash used		(895,295)	(732,105)	(895,260)	(732,065)
NET CASH FROM INVESTING ACTIVITIES		(134,328)	(75,992)	(134,293)	(74,958)
FINANCING ACTIVITIES					
Proceeds from borrowings		115,000	-	115,000	-
NET CASH FROM FINANCING ACTIVITIES		115,000	-	115,000	-
NET INCREASE (DECREASE) IN CASH HELD		16,885	(324)	18,482	(1,076)
Cash at 1 January	18	117,877	118,201	112,859	113,935
CASH AT 31 DECEMBER	18	134,762	117,877	131,341	112,859

The above statement should be read in conjunction with the accompanying notes.

THE AUSTRALIAN NATIONAL UNIVERSITY

SCHEDULE OF COMMITMENTS
AS AT 31 DECEMBER 2004

	Consolidated		University	
	2004 \$'000	2003 \$'000	2004 \$'000	2003 \$'000
BY TYPE				
CAPITAL COMMITMENTS				
Property, plant and equipment	46,345	22,226	46,345	22,226
TOTAL CAPITAL COMMITMENTS	46,345	22,226	46,345	22,226
OTHER COMMITMENTS				
Operating leases	791	1,007	-	-
Other commitments	7,529	7,198	7,529	7,198
TOTAL OTHER COMMITMENTS	8,320	8,205	7,529	7,198
COMMITMENTS RECEIVABLE	(4,898)	(2,675)	(4,898)	(2,675)
NET COMMITMENTS PAYABLE	49,767	27,756	48,976	26,749
BY MATURITY				
All net commitments				
One year or less	45,095	26,915	44,928	26,734
From one to five years	4,352	467	4,048	15
Greater than five years	320	374	-	-
NET COMMITMENTS PAYABLE	49,767	27,756	48,976	26,749
Operating/Finance lease commitments				
One year or less	167	181	-	-
From one to five years	304	452	-	-
Greater than five years	320	374	-	-
NET OPERATING LEASE COMMITMENTS PAYABLE	791	1,007	-	-

NB: Commitments are GST inclusive where relevant

SCHEDULE OF CONTINGENCIES AS AT 31 DECEMBER 2004

	Notes	Consolidated		University	
		2004 \$'000	2003 \$'000	2004 \$'000	2003 \$'000
CONTINGENT LIABILITIES					
Guarantees		55	385	55	385
Claims for damages/costs		-	29	-	29
TOTAL CONTINGENT LIABILITIES	39	55	414	55	414
CONTINGENT ASSETS					
Claims for damages/costs		-	495	-	495
TOTAL CONTINGENT ASSETS	38	-	495	-	495

The above schedule should be read in conjunction with the accompanying notes.

THE AUSTRALIAN NATIONAL UNIVERSITY

NOTES TO AND FORMING PART OF THE ACCOUNTS

Note	Contents
1	Significant Accounting Policies
2	Commonwealth Government Financial Assistance
3	State Government Financial Assistance
4	Fees and Charges
5	Investment Income
6	Sale of Goods and Services
7	Other Revenue
8	Employees
9	Services
10	Depreciation and Amortisation
11	Write-down of Assets
12	Gains/(Losses) On Disposal of Assets
13	Interest
14	Other Expenses
15	Expenses Attributed to Functions
16	Borrowing Cost Expense
17	Reserves
18	Cash
19	Receivables
20	Investments
21	Land and Buildings, and Infrastructure, Plant and Equipment
22	Inventories
23	Intangibles
24	Other Non-Financial Assets
25	Loans Payable
26	Employee Benefits
27	Suppliers
28	Other Provisions and Payables
29	Financial Instruments
30	Reconciliation of Operating Result to Net Cash Flows from Operations
31	Land
32	Remuneration of Officers
33	Remuneration of Auditors
34	Number of Employees
35	Superannuation Commitments
36	Cooperative Research Centres
37	Related Party Disclosures
38	Contingent Assets
39	Contingent Liabilities
40	Segment Information
41	Economic Dependency
42	Special Accounts
43	Joint Ventures
44	Acquittal of Commonwealth Government Financial Assistance

THE AUSTRALIAN NATIONAL UNIVERSITY

NOTES continued

1. SIGNIFICANT ACCOUNTING POLICIES

1.1 Basis of Accounting

a) The financial statements are a general purpose financial report and have been prepared in accordance with:

- Schedule 1 of the Commonwealth Authorities and Companies (Financial Statements for reporting periods ending on or after 30 June 2004) Orders made under the Commonwealth Authorities and Companies Act 1997 (FMOs) which require that the financial statements are prepared in compliance with Australian Accounting Standards and Accounting Interpretations issued by the Australian Accounting Standards Board, and having regard to Australian Statements of Accounting Concepts:

- the Consensus Views of the Urgent Issues Group; and

- the Guidelines for the Preparation of Annual Financial Reports for the 2004 Reporting Period by Australian Higher Education Institutions (the Guidelines) issued by the Department of Education, Science and Training (DEST).

The financial statements have been prepared on an accrual basis and are in accordance with historical cost convention, except for certain assets which, as noted, are at valuation as shown in Notes 1.8 and 1.10.

b) International Financial Reporting Standards (IFRS)

The Australian Accounting Standards Board (AASB) has adopted Australian equivalents to IFRS (AEIFRS) for application to reporting periods beginning on or after 1 January 2005. The adoption of AEIFRS will be first reflected in the consolidated entity's financial statements for the year ending 31 December 2005.

AASB 1047 *Disclosing the Impacts of Adopting Australian Equivalents to International Financial Reporting Standards* requires entities to disclose, in respect of annual or interim reporting periods on or after 30 June 2004:

- (i) an explanation of how the transition to AEIFRS is being managed; and
- (ii) a narrative explanation of the key differences in accounting policies that are expected to arise from adopting AEIFRS.

The following disclosures address these requirements.

Management of Transition to AEIFRS:

The University has developed a plan for the implementation of AEIFRS. The plan and subsequent reports have been tabled at both University Finance & Audit Committee meetings. Review of progress against the plan has been made a standing agenda item for Audit Committee meetings.

The University reviewed AASB Pending Standards as they were placed on the AASB web site. Issues relevant to the University were identified and an assessment made on the need for specialist advice. The review concluded that the impact of AEIFRS on the University's Financial Statements and current accounting processes would be minimal.

The University accounting policies have been fully reviewed, taking into account AEIFRS and relevant Finance Briefs issued by the Department of Finance, as well as the Guidelines issued by DEST. There have been no changes in Accounting policy which have arisen directly as a result of the transition to AEIFRS.

Preparation of an opening balance sheet required by AASB1 First Time Adoption of AEIFRS has commenced and is scheduled for completion by mid 2005. The reconciliation of equity as at 1 January 2005 is scheduled to be completed by mid 2005.

There has been no requirement to modify the University's financial management system in order to provide regular reporting during 2004 under both current Australian Accounting Standards and the newly adopted AEIFRS. There was no requirement for any procedural changes to capture data necessary for reporting under AEIFRS.

Key financial management staff have been trained in AEIFRS. All financial management staff were provided with outlines in respect of the implementation of AEIFRS.

THE AUSTRALIAN NATIONAL UNIVERSITY

NOTES continued

1. SIGNIFICANT ACCOUNTING POLICIES continued

1.2 Change in Accounting Policy

There were no changes in accounting policy during 2004, except for the change in accounting for grant revenue. In prior years the University has treated operating grants and research income received from the Commonwealth and other funding bodies as income in the year of receipt, except to the extent that the income relates to a future period, or can be reliably measured as relating to a future period, in which case such revenues are treated as income in advance. For 2004 and future years, the University is treating all operating grants and research income received from the Commonwealth and other funding bodies as income in the year of receipt. This change in accounting policy aligns the University's reporting of grant income with other universities, enabling users of the report to more accurately conduct analysis on a university sector basis and secondly reflects more appropriately the substance of grant funding arrangements. For the 2004 financial year, the net effect on operating results has been to increase operating surplus from ordinary activities by \$48,995,000 to \$49,726,000. With consistent accounting policy the operating results for the 2003 financial year would have been a surplus from ordinary activities of \$8,513,000. Comparative information (2003) on the face of the financial statements has not been restated as the cumulative effect up to the end of the preceding financial year has been recognised in accordance with paragraph 6.3 of AASB1001.

Under AASB1001 the cumulative effect of the change in accounting policy is separately disclosed, values can be attributed as follows:

Commonwealth Government financial assistance (note 2)	39,831,000
State Government financial assistance (note 3)	432,000
Consultancy and contract research	8,732,000
Total cumulative effect	<u>\$ 48,995,000</u>

1.3 Principles of Consolidation

The consolidated financial report of the economic entity include the accounts of the parent entity, The Australian National University, and the accounts of the wholly and beneficially owned subsidiary company ANU Enterprise Pty Ltd incorporated in the Australian Capital Territory. The accounting policies adopted in preparing the financial report have been consistently applied by entities in the consolidated entity except as otherwise indicated. The balances, and effects of transactions, between controlled entities included in the consolidated financial report have been eliminated.

1.4 Revenue Recognition

The University's operating revenue consists of Commonwealth Government Financial Assistance, Higher Education Contribution Scheme, Post Graduate Education Loans Scheme, ACT Government Financial Assistance, fees and charges, consultancy and contract research, investment income, sales of goods and services, gains on disposal of assets, and other revenue.

The University has treated operating grants and research income received from the Commonwealth and other funding bodies in 2004 as income in the year of receipt.

Fees and charges are recognised as income in the year of receipt, except to the extent that fees and charges relate to courses to be held in future periods. Such income is treated as income in advance. Conversely fees and charges relating to debtors are recognised as revenue in the year to which the prescribed course relates.

Interest income is recognised on a time proportionate basis that takes into account the effective yield on the relevant asset.

Dividend income is recognised as it is received.

Other investment revenue is recognised as it is received, with the exception of unrealised gains and losses which arise from the year end valuation process as described in Note 1.8.

Revenue from sales of goods and services is recognised as it is received.

1.5 Goods and Services Tax

The Australian National University and its subsidiary are exempt from all forms of taxation except fringe benefits tax and the good and services tax (GST). Revenues, expenses and assets are recognised net of the amount of GST, except where the amount of GST incurred is not recoverable from the Australian Taxation Office (ATO). In these circumstances the GST is recognised as part of the cost of acquisition of the asset or as part of the item of expense. Receivables and payables are stated with the amount of GST included. The net amount of GST recoverable from, or payable to, the ATO is included as a current asset or liability in the Statement of Financial Position. Cash flows are included in the Statement of Cash Flows on a gross basis. The GST components of cash flows arising from investing and financing activities which are recoverable from, or payable to, the ATO are classified as operating cash flows.

1.6 Borrowing Expenses

All borrowing costs are expensed as incurred.

THE AUSTRALIAN NATIONAL UNIVERSITY

NOTES continued

1. SIGNIFICANT ACCOUNTING POLICIES continued

1.7 Cash

Cash for the purposes of the Statement of Cash Flows, includes cash on hand, deposits at call with banks and money market investments readily convertible to cash.

1.8 Investments

University Funds are invested using guidelines approved by the Council of the University in the following categories:

- Bank accepted bills
- Capital Indexed Bonds
- Convertible notes
- Corporate bonds
- Debentures
- Exchanging instalment notes
- Floating rate notes
- Government and semi-government stocks and bonds
- Managed investment funds
- Negotiable certificates of deposit
- Overseas managed investment funds
- Promissory notes
- Properties
- Property trusts
- Shares and share options
- Short term money market deposits
- Stapled securities
- Term deposits
- Transferable certificates of deposit

Investment assets of the University are stated at market value. Market value in relation to investments has been determined as:

Land and buildings - all valuations are based on the deprival methodology which values investment land and buildings at its current market buying price. The University revalued investment land and buildings as at 31 December 2004;

Shares in public companies, stapled securities and convertible notes - the official market quotation price as listed by the Australian Stock Exchange at the close of business on 31 December 2004;

Fixed interest securities, such as semi government bonds - Calculated from yield provided by UBS Warburg Rate Sheet as at 31 December 2004; and

Managed investment funds and overseas managed investment funds - unit valuation supplied by the fund management groups as at 31 December 2004.

1.9 Inventories

Inventories held for resale are valued at the lower of cost or net realisable value. Costs are assigned to inventories using last purchase cost including costs incurred in bringing each product to its present location and condition. Consumables in store are valued at weighted average unit cost. Equipment being constructed for onsale to third parties is held as work in progress at the cost of construction as at balance date.

THE AUSTRALIAN NATIONAL UNIVERSITY

NOTES continued

1. SIGNIFICANT ACCOUNTING POLICIES continued

1.10 Property, Plant and Equipment

1.10.1 Depreciation and Amortisation

Purchases of property, plant and equipment are recognised initially at cost in the Statement of Financial Position, except for purchases costing less than \$5,000, which are expensed in the year of acquisition (other than where they form part of similar items which are significant in total). Depreciable property, plant and equipment assets are written off to their estimated residual value over their estimated remaining useful lives to the University using, in all cases, the straight line method of depreciation.

Depreciation and amortisation rates are generally based on remaining useful lives determined by valuation or as per the following schedule:

	<u>Years</u>
Dwellings and Campus Buildings	40
Plant and Equipment	
Motor vehicles	7
Computing equipment	5
Research / teaching equipment	7
Other	10

The aggregate amount of depreciation allocated for each class of assets during the reporting period is disclosed in Note 10.

1.10.2 Valuation

Plant and equipment was revalued in 2002. The valuation was performed by an independent valuer, the Australian Valuation Office. The valuation was on the basis of fair value. Non-electronic musical instruments were also included in this revaluation process. Plant and equipment purchased subsequent to the valuation are disclosed at cost. These assets are revalued every three years. As part of an assessment of the current values of plant and equipment, primarily in relation to the introduction of AEIFRS, a review was carried out by AON International Valuation Consultants and the carrying values of plant and equipment were deemed to be representative of fair value.

Rare library materials were revalued in 2004. The valuation was completed by independent qualified valuers, The Antique Bookshop and Curios.

Land except for holdings in Fiji as identified in Note 30, has been brought to account. Substantially all of the land in the Australian Capital Territory and the Northern Territory was revalued in 2004. The valuation was completed by independent valuers, the Australian Valuation Office and Egan National Valuers. The valuation was on the basis of market value for existing use which is consistent with the establishment of the concept of deprival value for financial reporting purposes. These sites are provided free of charge by lease in perpetuity and the resultant valuation increment has been credited directly to the asset revaluation reserve.

Substantially all of the campus buildings and dwellings were revalued in 2003. The valuation was completed by an independent valuer, AON International Valuation Consultants. The Depreciated Replacement Cost approach was used to establish the Market Value for the Existing Use of the properties. The net revaluation decrement was debited directly to the asset revaluation reserve. Campus buildings completed subsequent to the valuation are disclosed at cost. These assets are revalued every three years. AON International Valuation Consultants completed a further review in respect of buildings as at 1 January 2004 and some adjustments were brought to account in regard to a number of differences arising on this subsequent re-assessment.

The initial costs of developing major administrative systems were initially captured and recognised within plant and equipment and are being amortised. Ongoing maintenance and development costs are expensed as incurred.

THE AUSTRALIAN NATIONAL UNIVERSITY

NOTES continued

1. SIGNIFICANT ACCOUNTING POLICIES continued**1.11 Employee Entitlements**

The liability for long service leave is recognised and measured at the present value of the estimated future cash flows to be made in respect of all employees at 31 December 2004. In determining the present value of the liability, probabilities of taking long service leave, and attrition rates and pay increases through promotion and inflation have been taken into account.

The provision for annual leave reflects the value of total annual leave entitlements of all employees at 31 December 2004 and is recognised at its nominal value.

No provision has been made for sick leave as all sick leave is non-vesting and the average sick leave taken by employees is less than the annual entitlement for sick leave.

Provision is also made for separation and redundancy payments in circumstances where the University has formally identified positions as excess to requirements and a reliable estimate of the amount of the payments can be determined.

1.12 Foreign Currency Transactions

Transactions denominated in a foreign currency are converted at the rate of exchange prevailing at the date of the transaction. At balance date, amounts receivable and payable in a foreign currency are translated at the exchange rate prevailing at that date and any exchange differences are brought to account in the Statement of Financial Performance.

1.13 Comparative figures

Where necessary, comparative figures have been adjusted to conform with changes in presentation in these financial statements.

1.14 Deferred Research and Development Costs

ANU Enterprise Pty Limited's (formerly ANUTECH Pty Ltd) research and development costs are charged against income as incurred, except to the extent that such costs, together with unamortised deferred costs in relation to a project, are expected, beyond any reasonable doubt, to be recoverable. The deferred costs are amortised over the period in which the corresponding benefits are expected to arise, commencing with the commercial production of the product. The period over which benefits are expected to arise is reviewed regularly to recognise the effects of potential emerging technology and competitive products. The unamortised balance of research and development costs deferred in previous periods is reviewed regularly and at each reporting date, to ensure the criterion for deferral continues to be met. Where such costs are no longer considered recoverable, they are charged to the profit and loss statement in the financial year.

1.15 Intangible Assets

Goodwill in relation to ANU Enterprise Pty Limited, representing the excess of the cost of acquisition over the fair value of the identifiable new assets acquired, is amortised by the straight-line method over the period of twenty years. The balances are reviewed annually. Any balance representing future benefits, the realisation of which is considered to be improbable, is written off.

Intellectual property developed internally has not been brought to account because it cannot be reliably measured.

1.16 Unrecognised Financial Liabilities

Guarantees, not recognised in the Statement of Financial Performance are disclosed in the Schedule of Contingencies. At the time of completion of the financial statements, there was no reason to believe that these guarantees would be called upon, and recognition of a liability was therefore not required.

1.17 Joint Ventures

The proportionate interests in the assets, liabilities, revenues and expenses of a joint venture operation have been incorporated in the financial statements under the appropriate headings. Details of the joint venture are set out in note 43.

THE AUSTRALIAN NATIONAL UNIVERSITY

NOTES continued

2. COMMONWEALTH GOVERNMENT FINANCIAL ASSISTANCE
INCLUDING HIGHER EDUCATION CONTRIBUTION SCHEME (HECS) AND OTHER COMMONWEALTH LOAN PROGRAMMES

The information provided in this note is only relevant to the University - consolidated figures are not provided.

	Notes	University	
		2004 \$'000	2003 \$'000
(a) DEST - Teaching and Learning	44.1		
Operating Grant *		183,095	187,262
Capital Development Pool		-	7,300
Total DEST - Teaching and Learning		183,095	194,562
(b) HECS and other Commonwealth loan programmes	44.2		
HECS - Commonwealth payments		28,017	19,919
Postgraduate Education Loan Scheme (PELS)		4,367	3,711
Bridging Overseas Trained Professional Loan Scheme (BOTPELS)		5	-
Total HECS and other Commonwealth loan programmes		32,389	23,630
(c) Scholarships	44.3		
Australian Postgraduate Awards		4,642	4,618
International Postgraduate Research Scholarships		1,079	1,282
Commonwealth Education Costs Scholarships		52	-
Commonwealth Accommodation Scholarships		152	-
Total Scholarships		5,925	5,900
(d) DEST - Research	44.4		
Institutional Grants Scheme		16,309	16,359
Research Training Scheme		24,009	22,344
Systemic Infrastructure Initiative		33,197	8,288
Research Infrastructure Block Grants		10,603	8,582
Total DEST - Research		84,118	55,573
Total DEST		305,527	279,665

* Operating grant includes Workplace Reform Programme funds, Marginal Funding Estimates, Other HEIP Programs, Innovation Program and Equity Program.

THE AUSTRALIAN NATIONAL UNIVERSITY

NOTES continued

2. COMMONWEALTH GOVERNMENT FINANCIAL ASSISTANCE
INCLUDING HECS AND OTHER COMMONWEALTH LOAN PROGRAMMES continued

The information provided in this note is only relevant to the University - consolidated figures are not provided.

	Notes	University	
		2004 \$'000	2003 \$'000
(e) Australian Research Council	44.5		
(e)(i) Discovery	44.5(a)		
Project (Large Grants)		38,051	14,758
Fellowships		3,106	3,206
Federation Fellowship		4,802	2,195
Indigenous Researchers Initiatives		-	22
		45,959	20,181
Total Discovery			
(e)(ii) Linkages	44.5(b)		
Special Research Initiatives		313	70
Infrastructure		2,481	1,915
International Researcher Exchange		529	159
Projects		7,098	2,884
Research Networks		640	-
Centres		5,521	2,754
		16,582	7,782
Total Linkages			
(f) Other Commonwealth Government financial assistance:			
Health and Aged Care		23,324	15,875
Industry, Science and Resources		6,218	2,988
Foreign Affairs and Trade		5,106	2,164
Agriculture, Fisheries and Forestry		4,845	2,100
Environment and Heritage		348	259
Communications, Information Technology & the Arts		330	156
Defence		939	522
Education, Science and Training		11,602	963
Prime Minister and Cabinet		17	60
Transport and Regional Services		2	24
Family and Community Services		337	204
Other		1,862	1,843
		54,930	27,158
Total Other Commonwealth Government financial assistance			
Total Commonwealth Government financial assistance		422,998	334,786
Reconciliation			
Commonwealth Government grants		350,778	311,156
Commonwealth Government grants - change in accounting policy impact (note 1.2)		39,831	-
HECS - Commonwealth payments		28,017	19,919
Commonwealth Loan Programmes [PELS + BOTPLS]		4,372	3,711
		422,998	334,786
Total Commonwealth Government financial assistance		422,998	334,786

THE AUSTRALIAN NATIONAL UNIVERSITY

NOTES continued

	Consolidated		University	
	2004 \$'000	2003 \$'000	2004 \$'000	2003 \$'000
3. STATE GOVERNMENT FINANCIAL ASSISTANCE				
ACT Government grants were received by the University during the reporting period:				
Contributions	12,551	1,490	12,551	1,490
Contributions - change in accounting policy impact (note 1.2)	432	-	432	-
Total state government financial assistance	<u>12,983</u>	<u>1,490</u>	<u>12,983</u>	<u>1,490</u>
4. FEES AND CHARGES				
Fees and charges collected during the reporting period were:				
Continuing education	3,682	2,868	3,682	2,868
Full fee paying international students	32,096	28,265	32,096	28,265
Full fee paying domestic students	4,707	3,563	4,707	3,563
Other fees and charges	2,322	2,023	2,322	2,023
less disbursement of fees to student bodies and refunds	(1,609)	(1,312)	(1,609)	(1,312)
Total fees and charges	<u>41,198</u>	<u>35,407</u>	<u>41,198</u>	<u>35,407</u>
5. INVESTMENT INCOME				
Interest	22,706	21,484	22,495	21,311
Dividends	83,807	33,019	83,807	33,019
Other investment revenue				
Rentals from investment properties	4,688	1,883	4,688	1,883
<i>Investments unrealised during the period</i>				
Overseas managed investment funds	(2,188)	(6,420)	(2,188)	(6,420)
Shares and share options	75	-	75	-
<i>Investments realised during the period</i>				
Capital Indexed Bonds	56	-	56	-
Corporate bonds	(76)	(239)	(76)	(239)
Government and semi-government securities	366	(533)	366	(533)
Property	485	4,275	485	4,275
Overseas managed investment funds	289	-	289	-
Transferrable Certificates of Deposit	-	(7)	-	(7)
Shares and share options	(45,393)	(12,230)	(45,393)	(12,230)
	<u>(41,698)</u>	<u>(13,271)</u>	<u>(41,698)</u>	<u>(13,271)</u>
Direct investment expenditure	(6,172)	(2,486)	(6,172)	(2,486)
Total other investment income less direct investment expenditure	<u>(47,870)</u>	<u>(15,757)</u>	<u>(47,870)</u>	<u>(15,757)</u>
Total investment income	<u>58,643</u>	<u>38,746</u>	<u>58,432</u>	<u>38,573</u>

THE AUSTRALIAN NATIONAL UNIVERSITY

NOTES continued

	Consolidated		University	
	2004 \$'000	2003 \$'000	2004 \$'000	2003 \$'000
6. SALE OF GOODS AND SERVICES				
Parking permits	1,351	1,329	1,351	1,329
Rentals and hire facilities	4,487	3,781	4,487	3,781
Sales	8,525	7,857	8,525	7,437
Tariffs	13,368	11,323	13,368	11,323
Total sale of goods and services	27,731	24,290	27,731	23,870
7. OTHER REVENUE				
Sundry income	12,103	31,227	7,974	25,005
Recovery of direct expenditure from outside bodies	12,299	13,451	12,375	13,451
Workers compensation reimbursements	496	332	496	332
Scholarships and prizes	261	245	261	245
Donations and bequests	3,126	8,691	3,226	8,691
Total other revenue	28,285	53,946	24,332	47,724
8. EMPLOYEES				
Academic staff salaries	117,626	102,019	117,626	102,154
Academic staff salary related costs ¹	36,026	29,418	36,026	29,418
Non-academic staff salaries ²	116,935	104,826	115,024	102,818
Non-academic staff salary related costs ¹	45,643	40,816	45,302	40,263
Total cost of employees	316,230	277,079	313,978	274,653
1. Salary related expenses during the reporting period (including costs for staff separation and redundancy payments) comprise:				
Contributions to superannuation and pension schemes	35,469	31,225	35,311	31,040
Payroll tax	19,402	17,217	19,296	17,076
Workers compensation	2,631	1,577	2,612	1,540
Long service leave expense	10,625	7,566	10,592	7,533
Annual leave expense	13,542	12,649	13,517	12,492
Total salary related expenses	81,669	70,234	81,328	69,681
2. Non academic staff salaries comprise:				
Administrative staff	74,927	66,078	73,016	64,070
Technical staff	23,094	20,597	23,094	20,597
Research officers	10,173	9,136	10,173	9,136
Service staff including security	5,779	5,320	5,779	5,320
Librarians	1,536	1,602	1,536	1,602
Trade staff	1,426	2,093	1,426	2,093
Total non academic staff salaries	116,935	104,826	115,024	102,818

THE AUSTRALIAN NATIONAL UNIVERSITY

NOTES continued

	Consolidated		University	
	2004 \$'000	2003 \$'000	2004 \$'000	2003 \$'000
9. SERVICES				
Site maintenance and servicing ¹	29,238	36,778	29,228	36,778
Consumables, research and training materials	87,088	84,629	87,211	75,392
Travel, conferences and fieldwork	23,005	20,200	22,920	20,202
Project Contributions	25,743	14,023	26,243	14,023
Scholarships	32,632	27,381	32,654	27,411
Miscellaneous operating expenses ²	18,526	9,863	10,277	9,774
Total cost of services	216,232	192,874	208,533	183,580

1. Site maintenance and servicing includes:

Building repairs and maintenance	10,602	18,556	10,602	18,556
Electricity and gas	7,460	5,984	7,450	5,984
Cleaning expenses	4,852	4,893	4,852	4,893
Municipality charges	1,412	1,251	1,412	1,251
Grounds maintenance	1,370	3,370	1,370	3,370
Other Site Maintenance and servicing expenses	3,542	2,724	3,542	2,724
Total Site Maintenance and servicing	29,238	36,778	29,228	36,778

2. Miscellaneous operating expenses includes:

Cost of goods sold	-	535	-	-
Advertising	2,060	2,197	2,060	2,197
Management fees	800	751	802	751
Membership - professional bodies	589	626	589	626
Staff development	805	889	811	891
Audit expenses, internal and external	694	654	648	654
Patent, copyright and royalties	3	298	339	569
Legal expenses, settlements	988	586	988	593
Other Miscellaneous operating expenses	12,587	3,327	4,040	3,493
Total Miscellaneous operating expenses	18,526	9,863	10,277	9,774

10. DEPRECIATION AND AMORTISATION

Property at cost	-	1,024	-	1,024
Property at valuation	17,119	13,754	16,903	13,543
Plant, equipment and motor vehicles at cost	6,895	3,486	6,855	3,347
Plant, equipment and motor vehicles at valuation	15,404	18,065	15,404	18,065
License Agreement	17	33	17	33
Goodwill	9	9	-	-
Total depreciation and amortisation	39,444	36,371	39,179	36,012

THE AUSTRALIAN NATIONAL UNIVERSITY

NOTES continued

	Consolidated		University	
	2004 \$'000	2003 \$'000	2004 \$'000	2003 \$'000
11. WRITE-DOWN OF ASSETS				
Financial assets				
Receivables for goods and services - bad debts expense	95	270	83	134
Total write-down of assets	95	270	83	134
12. GAINS / (LOSSES) ON DISPOSAL OF ASSETS				
Gain on disposal of property, plant, equipment and motor vehicles	317	320	317	314
Loss on disposal of property, plant, equipment and motor vehicles	(1,426)	(4,365)	(1,426)	(4,365)
Net gains / (losses) on disposal of assets	(1,109)	(4,045)	(1,109)	(4,051)
13. INTEREST				
Finance charges on lease liabilities	6	4	6	4
Total interest expense	6	4	6	4
14. OTHER EXPENSES				
Doubtful debts expense	736	(109)	736	(68)
<i>Commonwealth Superannuation Account</i>				
Pension payments	18,198	18,134	18,198	18,134
Employee superannuation entitlements expense	12,200	26,563	12,200	26,563
Total other expenses	31,134	44,588	31,134	44,629

THE AUSTRALIAN NATIONAL UNIVERSITY

NOTES continued

	Notes	Consolidated		University	
		2004 \$'000	2003 \$'000	2004 \$'000	2003 \$'000
15. EXPENSES ATTRIBUTED TO FUNCTIONS					
15.1 SUMMARY OF EXPENSES ATTRIBUTED TO FUNCTIONS					
Academic activities	15.2	398,850	333,012	395,095	329,010
Libraries	15.3	15,240	19,561	15,240	19,562
Academic support services	15.4	23,950	20,667	18,196	13,794
Student services	15.5	50,177	45,101	50,196	45,134
Public services	15.6	3,529	6,589	3,529	6,589
Buildings and grounds	15.7	20,536	29,809	20,526	29,809
Administration and other general institutional services	15.8	59,624	51,585	58,908	50,347
Other expenses	15.9	32,661	49,227	32,649	49,132
Total expenses from ordinary activities		604,567	555,551	594,339	543,377
15.2 ACADEMIC ACTIVITIES					
<i>Salary and related expenses</i>					
Academic staff salaries		117,181	100,950	117,255	101,085
Academic staff salary related costs		35,957	29,173	35,957	29,173
Non-academic staff salaries		67,967	59,257	67,967	59,257
Non-academic staff salary related costs		27,584	23,464	27,584	23,464
<i>Depreciation expense</i>					
Property at cost		-	467	-	467
Property at valuation		11,070	9,458	11,070	9,458
Plant, equipment and motor vehicles		14,852	14,582	14,852	14,582
<i>Other expenses</i>					
Site maintenance and servicing		12,900	9,677	12,900	9,677
Consumables, research and teaching materials		54,942	50,033	55,065	45,984
Travel, conferences and fieldwork		21,092	17,569	21,007	17,571
Project Contributions		25,743	14,023	26,243	14,023
Miscellaneous operating expenses		9,562	4,359	5,195	4,269
Total academic activities expenses		398,850	333,012	395,095	329,010

THE AUSTRALIAN NATIONAL UNIVERSITY

NOTES continued

	Consolidated		University	
	2004 \$'000	2003 \$'000	2004 \$'000	2003 \$'000
15.3 LIBRARIES				
<i>Salary and related expenses</i>				
Non-academic staff salaries	5,393	5,759	5,393	5,759
Non-academic staff salary related costs	1,868	2,192	1,868	2,192
<i>Depreciation expense</i>				
Property at cost	-	128	-	128
Property at valuation	354	287	354	287
Plant, equipment and motor vehicles	151	162	151	162
<i>Other expenses</i>				
Site maintenance and servicing	66	766	66	766
Consumables, research and teaching materials ¹	7,177	10,037	7,177	10,037
Travel, conferences and fieldwork	62	77	62	77
Miscellaneous operating expenses	169	153	169	154
Total libraries expenses	15,240	19,561	15,240	19,562
1. Includes library materials.				
15.4 ACADEMIC SUPPORT SERVICES				
<i>Salary and related expenses</i>				
Non-academic staff salaries	8,293	6,885	6,716	5,345
Non-academic staff salary related costs	3,108	2,497	2,822	2,008
<i>Depreciation expense</i>				
Property at valuation	213	192	213	192
Plant, equipment and motor vehicles	3,991	3,003	3,991	3,003
<i>Other expenses</i>				
Site maintenance and servicing	28	315	28	315
Consumables, research and teaching materials	3,752	7,198	3,752	2,354
Travel, conferences and fieldwork	461	374	461	374
Miscellaneous operating expenses	4,104	203	213	203
Total academic support services expenses	23,950	20,667	18,196	13,794
15.5 STUDENT SERVICES				
<i>Salary and related expenses</i>				
Non-academic staff salaries	4,867	5,214	4,867	5,214
Non-academic staff salary related costs	1,562	1,642	1,562	1,642
<i>Depreciation expense</i>				
Property at cost	-	56	-	56
Property at valuation	2,690	2,013	2,690	2,013
Plant, equipment and motor vehicles	174	192	174	192
<i>Other expenses</i>				
Site maintenance and servicing	4,007	3,929	4,007	3,929
Consumables, research and teaching materials	2,512	3,254	2,512	3,257
Travel, conferences and fieldwork	1,026	790	1,026	790
Scholarships	32,632	27,381	32,654	27,411
Miscellaneous operating expenses	707	630	704	630
Total student services expenses	50,177	45,101	50,196	45,134

THE AUSTRALIAN NATIONAL UNIVERSITY

NOTES continued

	Consolidated		University	
	2004 \$'000	2003 \$'000	2004 \$'000	2003 \$'000
15.6 PUBLIC SERVICES				
<i>Salary and related expenses</i>				
Academic staff salaries	371	1,069	371	1,069
Academic staff salary related costs	69	245	69	245
Non-academic staff salaries	1,216	1,517	1,216	1,517
Non-academic staff salary related costs	316	615	316	615
<i>Depreciation expense</i>				
Property at valuation	149	129	149	129
Plant, equipment and motor vehicles	26	58	26	58
<i>Other expenses</i>				
Site maintenance and servicing	45	58	45	58
Consumables, research and teaching materials	825	1,981	825	1,981
Travel, conferences and fieldwork	69	219	69	219
Miscellaneous operating expenses	443	698	443	698
Total public services expenses	<u>3,529</u>	<u>6,589</u>	<u>3,529</u>	<u>6,589</u>
15.7 BUILDINGS AND GROUNDS				
<i>Salary and related expenses</i>				
Non-academic staff salaries	6,080	6,304	6,080	6,304
Non-academic staff salary related costs	2,541	2,291	2,541	2,291
<i>Depreciation expense</i>				
Property at cost	-	365	-	365
Property at valuation	1,270	554	1,270	554
Plant, equipment and motor vehicles	228	513	228	513
Amortisation Agreement	17	33	17	33
<i>Other expenses</i>				
Site maintenance and servicing	6,846	18,126	6,836	18,126
Consumables, research and teaching materials	3,388	1,408	3,388	1,408
Travel, conferences and fieldwork	55	95	55	95
Miscellaneous operating expenses	111	120	111	120
Total buildings and grounds expenses	<u>20,536</u>	<u>29,809</u>	<u>20,526</u>	<u>29,809</u>
15.8 ADMINISTRATION AND OTHER GENERAL INSTITUTIONAL SERVICES				
<i>Salary and related expenses</i>				
Non-academic staff salaries	23,193	19,890	22,785	19,422
Non-academic staff salary related costs	8,664	8,115	8,609	8,051
<i>Depreciation expense</i>				
Property at cost	-	8	-	8
Property at valuation	1,373	1,121	1,157	910
Plant, equipment and motor vehicles	2,877	3,041	2,837	2,902
Goodwill	9	9	-	-
<i>Other expenses</i>				
Site maintenance and servicing	5,346	3,907	5,346	3,907
Consumables, research and teaching materials	14,492	10,718	14,492	10,371
Travel, conferences and fieldwork	240	1,076	240	1,076
Miscellaneous operating expenses	3,430	3,700	3,442	3,700
Total administration and other general institutional services expenses	<u>59,624</u>	<u>51,585</u>	<u>58,908</u>	<u>50,347</u>

THE AUSTRALIAN NATIONAL UNIVERSITY

NOTES continued

	Consolidated		University	
	2004 \$'000	2003 \$'000	2004 \$'000	2003 \$'000
15.9 OTHER				
Bad debts	95	270	83	134
Doubtful debts expense	736	(109)	736	(68)
Interest expense	6	4	6	4
Loss on disposal of plant, equipment and motor vehicles	1,426	4,365	1,426	4,365
<i>Commonwealth Superannuation Account</i>				
Pension payments	18,198	18,134	18,198	18,134
Employee superannuation entitlements expense	12,200	26,563	12,200	26,563
Total other expenses	32,661	49,227	32,649	49,132

16. BORROWING COST EXPENSE

Borrowing Cost Expense - Interest	1,410	-	1,410	-
Borrowing Cost Expense - Other Expenses	691	-	691	-
Total Borrowing Cost Expense	2,101	-	2,101	-

17. RESERVES**17 (a) - Analysis of Equity****Consolidated**

Item	Accumulated Results \$'000	Asset Revaluation Reserve \$'000	Other Reserves (Special Reserves) \$'000	Total Reserves \$'000	TOTAL EQUITY \$'000
Opening Balance 1 January 2004	415,452	633,104	43,173	676,277	1,091,729
Operating surplus/(deficit) from ordinary activities	47,148	-	-	-	47,148
Net revaluation increase/(decrease)	-	154,948	-	154,948	154,948
Transfers to/(from) reserves	-	3,518	(624)	2,894	2,894
Closing Balance 31 December 2004	462,600	791,570	42,549	834,119	1,296,719

University

Item	Accumulated Results \$'000	Asset Revaluation Reserve \$'000	Other Reserves (Special Reserves) \$'000	Total Reserves \$'000	TOTAL EQUITY \$'000
Opening Balance 1 January 2004	417,215	630,670	43,173	673,843	1,091,058
Operating surplus/(deficit) from ordinary activities	46,832	-	-	-	46,832
Net revaluation increase/(decrease)	-	154,434	-	154,434	154,434
Transfers to/(from) reserves	-	3,518	(624)	2,894	2,894
Closing Balance 31 December 2004	464,047	788,622	42,549	831,171	1,295,218

THE AUSTRALIAN NATIONAL UNIVERSITY

NOTES continued

	Consolidated		University	
	2004 \$'000	2003 \$'000	2004 \$'000	2003 \$'000
17. RESERVES continued				
17 (b) - Reserves				
Asset revaluation - Property	646,846	537,672	643,898	535,238
Asset revaluation - Plant & Equipment	66,034	65,760	66,034	65,760
Asset revaluation - Investments	68,050	24,079	68,050	24,079
Asset revaluation - Crown Lease	4,760	960	4,760	960
Asset revaluation - Rare Library Materials	5,880	4,633	5,880	4,633
	<u>791,570</u>	<u>633,104</u>	<u>788,622</u>	<u>630,670</u>
<i>Special Reserves:</i>				
Building	20,316	20,508	20,316	20,508
Equipment	10,729	11,994	10,729	11,994
Development and Restructuring	5,405	5,256	5,405	5,256
Self insurance of dwellings and buildings	5,997	5,313	5,997	5,313
Equipment Replacement	102	102	102	102
	<u>42,549</u>	<u>43,173</u>	<u>42,549</u>	<u>43,173</u>
Total special reserves				
	<u>42,549</u>	<u>43,173</u>	<u>42,549</u>	<u>43,173</u>
Total reserves	<u>834,119</u>	<u>676,277</u>	<u>831,171</u>	<u>673,843</u>

Summary of movements in reserves during the year ended 31 December 2004

Balance at beginning of year	676,277	589,503	673,843	587,552
Transfer to/(from) retained surpluses on revaluation	3,518	(4,678)	3,518	(4,678)
Transfer to/(from) retained surpluses other	(624)	(9,535)	(624)	(9,535)
Increments/(decrements) on revaluation	154,948	100,987	154,434	100,504
	<u>834,119</u>	<u>676,277</u>	<u>831,171</u>	<u>673,843</u>

Movements in reserves

<i>Asset revaluation - Property</i>				
Balance at beginning of year	537,672	457,254	535,238	455,303
Increments/(decrements) on revaluation of				
Land	4,856	-	4,856	-
Buildings	104,318	80,418	103,804	79,935
	<u>646,846</u>	<u>537,672</u>	<u>643,898</u>	<u>535,238</u>
<i>Asset revaluation - Plant and Equipment</i>				
Balance at beginning of year	65,760	66,321	65,760	66,321
Increments/(decrements) on revaluation	274	(561)	274	(561)
	<u>66,034</u>	<u>65,760</u>	<u>66,034</u>	<u>65,760</u>
<i>Asset revaluation - Investments</i>				
Balance at beginning of year	24,079	7,636	24,079	7,636
Transfer to retained surpluses	3,518	(4,678)	3,518	(4,678)
Increments/(decrements) on revaluation	40,453	21,121	40,453	21,121
	<u>68,050</u>	<u>24,079</u>	<u>68,050</u>	<u>24,079</u>

THE AUSTRALIAN NATIONAL UNIVERSITY

NOTES continued

	Consolidated		University	
	2004 \$'000	2003 \$'000	2004 \$'000	2003 \$'000
17. RESERVES continued				
<i>Asset revaluation - Crown Lease</i>				
Balance at beginning of year	960	960	960	960
Increments on revaluation	3,800	-	3,800	-
Balance at end of year	4,760	960	4,760	960
<i>Asset revaluation - Rare Library Materials</i>				
Balance at beginning of year	4,633	4,624	4,633	4,624
Increments on revaluation	1,247	9	1,247	9
Balance at end of year	5,880	4,633	5,880	4,633
<i>Building</i>				
Balance at beginning of year	20,508	25,169	20,508	25,169
Transfer from retained surpluses	2,400	9,223	2,400	9,223
Transfer to retained surpluses	(2,592)	(13,884)	(2,592)	(13,884)
Balance at end of year	20,316	20,508	20,316	20,508
<i>Equipment</i>				
Balance at beginning of year	11,994	10,729	11,994	10,729
Transfer from retained surpluses	3,898	3,166	3,898	3,166
Transfer to retained surpluses	(5,163)	(1,901)	(5,163)	(1,901)
Balance at end of year	10,729	11,994	10,729	11,994
<i>Development and Restructuring</i>				
Balance at beginning of year	5,256	10,434	5,256	10,434
Transfer from retained surpluses	810	505	810	505
Transfer to retained surpluses	(661)	(5,683)	(661)	(5,683)
Balance at end of year	5,405	5,256	5,405	5,256
<i>Self insurance of dwellings and buildings</i>				
Balance at beginning of year	5,313	6,176	5,313	6,176
Transfer from retained surpluses	697	697	697	697
Transfer to retained surpluses	(13)	(1,560)	(13)	(1,560)
Balance at end of year	5,997	5,313	5,997	5,313
<i>Equipment Replacement</i>				
Balance at beginning of year	102	200	102	200
Transfer from retained surpluses	-	(98)	-	(98)
Balance at end of year	102	102	102	102

THE AUSTRALIAN NATIONAL UNIVERSITY

NOTES continued

	Consolidated		University	
	2004 \$'000	2003 \$'000	2004 \$'000	2003 \$'000
18. CASH				
Cash on hand	38	56	38	56
Bank	7,914	9,465	7,150	6,961
Deposits at call	126,810	108,356	124,153	105,842
	<u>134,762</u>	<u>117,877</u>	<u>131,341</u>	<u>112,859</u>
Reconciliation of Cash				
Cash at end of the financial year as shown in the statement of cash flow	<u>134,762</u>	<u>117,877</u>	<u>131,341</u>	<u>112,859</u>

Total cash available includes \$42,549,000 (University \$42,549,000) which has been retained for future expenditure as outlined in the Special Reserves (see Note 17).

19. RECEIVABLES

Current receivables:

Goods and services	29,664	22,016	27,137	20,107
Less: Provision for doubtful debts	(1,428)	(680)	(1,416)	(680)
	<u>28,236</u>	<u>21,336</u>	<u>25,721</u>	<u>19,427</u>
Income due	2,185	17,575	2,185	17,575
Interest receivable	4,623	5,935	4,623	5,935
GST receivable	441	1,820	441	1,820
Loans	207	-	207	-
	<u>35,692</u>	<u>46,666</u>	<u>33,177</u>	<u>44,757</u>
<i>Non-current receivables:</i>				
Loans	6,416	5,695	6,416	5,695
	<u>6,416</u>	<u>5,695</u>	<u>6,416</u>	<u>5,695</u>
Total non-current receivables	<u>6,416</u>	<u>5,695</u>	<u>6,416</u>	<u>5,695</u>
Total receivables	<u>42,108</u>	<u>52,361</u>	<u>39,593</u>	<u>50,452</u>

Ageing of receivables (gross):

Not overdue	36,877	43,697	34,350	41,795
Less than 30 days overdue	2,711	2,958	2,711	2,951
30 to 60 days overdue	499	1,016	499	1,016
60 to 90 days overdue	631	692	631	692
More than 90 days	2,818	4,678	2,818	4,678
	<u>43,536</u>	<u>53,041</u>	<u>41,009</u>	<u>51,132</u>

THE AUSTRALIAN NATIONAL UNIVERSITY

NOTES continued

	Consolidated		University	
	2004 \$'000	2003 \$'000	2004 \$'000	2003 \$'000
20. INVESTMENTS				
<i>Current investments:</i>				
<i>Investments at valuation (see Note 1.8)</i>				
Corporate bonds	19,281	12,123	19,281	12,123
Debentures	5,000	5,000	5,000	5,000
Government and semi-government securities	302	-	302	-
Transferable certificate of deposits	21,589	9,925	21,589	9,925
Floating rate notes	15,063	11,600	15,063	11,600
Total current investments	61,235	38,648	61,235	38,648
<i>Non-current investments:</i>				
<i>Investments at valuation (see Note 1.8)</i>				
Capital Indexed Bonds	4,802	-	4,802	-
Convertible notes	4,558	2,050	4,558	2,050
Corporate bonds	93,086	119,825	93,086	119,825
Floating rate notes	149,087	52,441	149,087	52,441
Government and semi-government securities	16,815	46,222	16,815	46,222
Managed investment funds	38,104	35,028	38,104	35,028
Overseas managed investment funds	31,857	28,144	31,857	28,144
Properties 1	18,300	21,000	18,300	21,000
Property trusts	25,583	17,813	25,583	17,813
Shares and share options 2	291,259	241,621	291,244	241,578
Shares in subsidiary	-	-	7,200	7,200
Transferable certificate of deposits	2,000	4,043	2,000	4,043
Other	-	605	-	605
Total non-current investments	675,451	568,792	682,636	575,949
Total investments	736,686	607,440	743,871	614,597

1. The land at 380 LaTrobe Street has been used as collateral to secure a loan of \$59m taken out by the University's partners to fund its development. The University's investment is valued at \$6.5m in the Properties class of investments.

2. \$2,017,400 of securities are being held by Bell Potter Securities Limited as security against present and future trades made by the University.

THE AUSTRALIAN NATIONAL UNIVERSITY

NOTES continued

	Consolidated		University	
	2004 \$'000	2003 \$'000	2004 \$'000	2003 \$'000
21. LAND AND BUILDINGS, AND INFRASTRUCTURE, PLANT AND EQUIPMENT				
Work in progress	27,257	44,516	27,257	44,516
Land at Cost	-	272	-	272
Campus buildings at cost	51,967	-	51,967	-
Property at Cost	51,967	272	51,967	272
Site infrastructure at valuation	21,276	18,987	21,276	18,987
Accumulated depreciation	(772)	(164)	(772)	(164)
Land at valuation	43,528	38,280	43,528	38,280
Dwellings at valuation	13,480	12,740	13,480	12,740
Accumulated depreciation	(269)	(81)	(269)	(81)
Campus buildings at valuation	731,919	624,805	724,989	618,225
Accumulated depreciation	(15,695)	(4,917)	(15,695)	(4,917)
Property at Valuation	793,467	689,650	786,537	683,070
Crown Lease	6,200	3,000	6,200	3,000
Accumulated amortisation	-	(400)	-	(400)
Amortised crown lease	6,200	2,600	6,200	2,600
Total land, buildings and infrastructure	878,891	737,038	871,961	730,458
Work in progress	2,741	939	2,741	939
Plant, equipment and motor vehicles at cost	51,177	34,235	49,551	32,651
Accumulated depreciation	(11,917)	(4,990)	(10,389)	(3,502)
Plant, equipment and motor vehicles at valuation	104,107	107,217	104,107	107,217
Accumulated depreciation	(33,974)	(19,734)	(33,974)	(19,734)
	109,393	116,728	109,295	116,632
Works of art at cost	630	395	630	395
Works of art at valuation	9,116	8,509	9,116	8,509
	9,746	8,904	9,746	8,904
Rare library materials at valuation	8,157	6,911	8,157	6,911
	8,157	6,911	8,157	6,911
Total plant and equipment	130,037	133,482	129,939	133,386
Total land, buildings, infrastructure, plant and equipment	1,008,928	870,520	1,001,900	863,844

THE AUSTRALIAN NATIONAL UNIVERSITY

NOTES continued

21. LAND AND BUILDINGS, AND INFRASTRUCTURE, PLANT AND EQUIPMENT continued

Table A: Reconciliation of the opening and closing balances of land and buildings, and infrastructure, plant and equipment (Consolidated only)

	Land \$'000	Buildings \$'000	Other infrastructure & Crown Lease \$'000	buildings and other infrastructure \$'000	Plant and equipment \$'000	Total \$'000
Gross value						
As at 1 January 2004	38,552	637,545	66,503	742,600	158,206	900,806
Additions	120	56,467	34,710	91,297	20,426	111,723
Revaluations	4,856	103,354	5,487	113,697	1,246	114,943
Disposals	-	-	(51,967)	(51,967)	(3,950)	(55,917)
As at 31 December 2004	43,528	797,366	54,733	895,627	175,928	1,071,555
Accumulated depreciation / amortisation						
As at 1 January 2004	-	4,998	565	5,563	24,723	30,286
Charge for the reporting period	-	16,149	970	17,119	22,299	39,418
Revaluations	-	(5,183)	(763)	(5,946)	(1,131)	(7,077)
As at 31 December 2004	-	15,964	772	16,736	45,891	62,627
Net book value as at 31 December 2004	43,528	781,402	53,961	878,891	130,037	1,008,928
Net book value as at 1 January 2004	38,552	632,547	65,938	737,037	133,483	870,520

Table B: Reconciliation of the opening and closing balances of land and buildings, and infrastructure, plant and equipment (University only)

Item	Land \$'000	Buildings \$'000	Other infrastructure \$'000	Total land and buildings and other infrastructure \$'000	Plant and equipment \$'000	Total \$'000
Gross value						
As at 1 January 2004	38,552	630,967	66,501	736,020	156,623	892,643
Additions	120	56,467	34,710	91,297	20,384	111,681
Revaluations	4,856	103,002	5,489	113,347	1,246	114,593
Disposals/Write offs	-	-	(51,967)	(51,967)	(3,951)	(55,918)
As at 31 December 2004	43,528	790,436	54,733	888,697	174,302	1,062,999
Accumulated depreciation / amortisation						
As at 1 January 2004	-	4,998	565	5,563	23,236	28,799
Charge for the reporting period	-	15,933	970	16,903	22,259	39,162
Revaluations	-	(4,967)	(763)	(5,730)	(1,132)	(6,862)
As at 31 December 2004	-	15,964	772	16,736	44,363	61,099
Net book value as at 31 December 2004	43,528	774,472	53,961	871,961	129,939	1,001,900
Net book value as at 1 January 2004	38,552	625,969	65,936	730,457	133,387	863,844

THE AUSTRALIAN NATIONAL UNIVERSITY

NOTES continued

21. LAND AND BUILDINGS, AND INFRASTRUCTURE, PLANT AND EQUIPMENT continued

Table C: Reconciliation of the opening and closing balances of land and buildings, and infrastructure, plant and equipment at valuation (Consolidated only)

Item	Land \$'000	Buildings \$'000	Other infrastructure \$'000	Total land and buildings and other infrastructure \$'000	Plant and equipment \$'000	Total \$'000
Gross value						
As at 1 January 2004	38,280	637,547	21,987	697,814	122,637	820,451
Revaluations	5,248	107,852	5,489	118,589	2,224	120,813
Disposals/Write offs	-	-	-	-	(3,481)	(3,481)
As at 31 December 2004	43,528	745,399	27,476	816,403	121,380	937,783
Accumulated depreciation / amortisation						
As at 1 January 2004	-	4,998	564	5,562	19,734	25,296
Charge for the reporting period	-	16,149	970	17,119	15,404	32,523
Revaluations	-	(5,183)	(762)	(5,945)	(1,164)	(7,109)
As at 31 December 2004	-	15,964	772	16,736	33,974	50,710
Net book value as at 31 December 2004	43,528	729,435	26,704	799,667	87,406	887,073
Net book value as at 1 January 2004	38,280	632,549	21,423	692,252	102,903	795,155

Table D: Assets under construction (Consolidated only)

Item	Land \$'000	Buildings \$'000	Other infrastructure \$'000	Total land and buildings and other infrastructure \$'000	Plant and equipment \$'000	Total \$'000
As at 31 December 2004						
Gross value	-	27,257	-	27,257	2,741	29,998
Accumulated depreciation/amortisation	-	-	-	-	-	-
Net book value	-	27,257	-	27,257	2,741	29,998
As at 31 December 2003						
Gross value	-	44,516	-	44,516	939	45,455
Accumulated depreciation/amortisation	-	-	-	-	-	-
Net book value	-	44,516	-	44,516	939	45,455

THE AUSTRALIAN NATIONAL UNIVERSITY

NOTES continued

	Consolidated		University	
	2004 \$'000	2003 \$'000	2004 \$'000	2003 \$'000
22. INVENTORIES				
Inventory held for sale	1,366	1,200	157	123
Consumables in store	935	1,103	935	1,103
WIP equipment for sale	500	4,350	500	4,350
	<u>2,801</u>	<u>6,653</u>	<u>1,592</u>	<u>5,576</u>
23. INTANGIBLES				
<i>Current assets:</i>				
Goodwill on acquisition	181	181	-	-
Amortisation of goodwill	(77)	(68)	-	-
Total current assets	<u>104</u>	<u>113</u>	<u>-</u>	<u>-</u>
24. OTHER NON-FINANCIAL ASSETS				
<i>Current assets:</i>				
Advance payments and prepaid expenditure	9,705	9,780	9,689	9,778
Licence Agreement	68	51	68	51
Amortisation of License Agreement	(51)	(33)	(51)	(33)
Total current assets	<u>9,722</u>	<u>9,798</u>	<u>9,706</u>	<u>9,796</u>
<i>Non-current assets:</i>				
Deferred research and development costs	64	218	-	-
Licence Agreement	371	388	371	388
Total non-current assets	<u>435</u>	<u>606</u>	<u>371</u>	<u>388</u>
Total other non-financial assets	<u>10,157</u>	<u>10,404</u>	<u>10,077</u>	<u>10,184</u>
25. LOANS PAYABLE				
<i>Current liability:</i>				
Indexed Annuity Bonds	288	-	288	-
Total current liabilities	<u>288</u>	<u>-</u>	<u>288</u>	<u>-</u>
<i>Non-current liability:</i>				
Indexed Annuity Bonds	114,434	-	114,434	-
Total non-current liabilities	<u>114,434</u>	<u>-</u>	<u>114,434</u>	<u>-</u>
Total loans payable	<u>114,722</u>	<u>-</u>	<u>114,722</u>	<u>-</u>
<p>The University has issued Indexed Annuity Bonds in October 2004 with a maturity of 25 years. The loan is repayable by quarterly instalments of principal and interest that is indexed in alignment with the Australian Consumer Price Index (CPI). The real yield payable on the Bonds is 3.235% with an effective CPI base of 30 September 2004.</p>				
26. EMPLOYEES				
<i>Current liability:</i>				
Accrued salary and related expenses	2,742	-	2,742	-
Superannuation levy	302	-	302	-
Payroll tax	181	-	181	-
Workers' compensation	23	-	23	-
Employee superannuation entitlements	18,351	17,806	18,351	17,806
Annual Leave entitlements	19,274	16,370	18,950	16,053
Long Service Leave entitlements	3,146	4,269	3,048	4,153
Total current liability	<u>44,019</u>	<u>38,445</u>	<u>43,597</u>	<u>38,012</u>
<i>Non-current liability:</i>				
Employee superannuation entitlements	396,548	384,893	396,548	384,893
Long Service Leave entitlements	47,888	39,215	47,843	39,173
Total non-current liability	<u>444,436</u>	<u>424,108</u>	<u>444,391</u>	<u>424,066</u>
Total provisions and payables to employees	<u>488,455</u>	<u>462,553</u>	<u>487,988</u>	<u>462,078</u>

THE AUSTRALIAN NATIONAL UNIVERSITY

NOTES continued

	Consolidated		University	
	2004 \$'000	2003 \$'000	2004 \$'000	2003 \$'000
27. SUPPLIERS				
Trade creditors	23,407	20,749	22,764	19,883
Total provisions and payables to suppliers	23,407	20,749	22,764	19,883

28. OTHER PROVISIONS AND PAYABLES
Other current provisions and payables:

Income in advance	7,190	83,263	5,061	82,708
Other creditors	2,621	1,785	2,621	1,785
Construction Project Liability	645	1,270	-	-
Intellectual Property Provision	1,371	9	-	-
Lease Liability	-	7	-	-
Research account	-	59	-	-
Incomplete project revenue	-	3,444	-	-
Total other current provisions and payables	11,827	89,837	7,682	84,493

Other non-current provisions and payables:

Income in advance	416	500	-	-
Total other non-current provisions and payables	416	500	-	-
Total other provisions and payables	12,243	90,337	7,682	84,493

29. FINANCIAL INSTRUMENTS
29.1 TERMS, CONDITIONS AND ACCOUNTING POLICIES

Financial Instrument	Notes	Accounting Policies and Methods	Nature of underlying instrument
Financial assets		Financial assets are recognised when control over future economic benefits is established and the amount of the benefit can be reliably measured.	
Cash at bank and deposits at call	18	Cash at bank and deposits are recognised at their nominal amounts. Interest is credited to revenue as it accrues.	Temporarily surplus funds, mainly from fortnightly drawdowns of funding payments and surplus investment funds, are placed on deposit at call with authorised banks. Interest is earned on the daily balance at the prevailing daily rate for money on call and is paid at month end.
Receivables for goods & services	19	Receivables are recognised at the nominal amounts due less any provision for bad and doubtful debts. Provisions are made when collection of the debt is judged to be less rather than more likely.	The University's credit terms are net 30 days. Settlement periods for entities consolidated range from 14-60 days.
Government and semi-government securities (G&SGS) and corporate bonds	20	Commonwealth and State Government Bonds are recognised at market value. Interest is credited to revenue as it accrues.	G&SGS have terms of up to 15 years. G&SGS are guaranteed by the issuing Government and are traded in active markets. Coupons are usually received on the anniversary of the maturity date and six months from the anniversary date. Investment in corporate bonds is restricted to debt securities issued by authorised banks and companies with an A+ credit rating. Terms up to 10 years.

THE AUSTRALIAN NATIONAL UNIVERSITY

NOTES continued

29.1 TERMS, CONDITIONS AND ACCOUNTING POLICIES (continued)

Financial Instrument	Notes	Accounting Policies and Methods	Nature of underlying instrument
Capital Indexed Bonds	20	Capital Indexed Bonds are recognised at market value. Interest is credited to revenue as it accrues.	Investment in Capital Indexed Bonds is restricted to debt securities issued by authorised banks and companies with an A+ credit rating. Terms up to 10 years. Coupons are usually received on the anniversary of the maturity date and quarterly from the anniversary date.
Debentures	20	The debentures held are recognised at market value. Interest is recognised as it accrues.	Investment in debentures is restricted to companies with an A+ credit rating and affiliated with an authorised bank. Interest is paid quarterly or half yearly.
Transferable certificates of deposits (TCDs)	20	TCDs are recognised at market value. Interest is accrued as it is earned.	TCDs are purchased from authorised banks. Terms are variable but normally less than 5 years.
Overseas managed investment funds and managed investment funds	20	Managed investment funds are carried at the market value of the underlying asset. Converted to AUD at the prevailing spot rate.	Managed funds comprise assets made up of listed companies on world stock markets, foreign cash balances and cash in Australian dollars. Distributions are reinvested in new units.
Convertible notes	20	Convertible notes are quoted on the Australian Stock Exchange and are valued at the last sale price on the day of valuation. Movements in these values between reporting dates are accounted for in accordance with the provisions of AASB 1041 "Revaluation of Non-Current Assets".	Convertible notes convert to ordinary shares on a predetermined date.
Properties	20	Physical properties held in the investment portfolio are carried at market value. Formal independent valuations are obtained every three years and internal valuations based on market research are used for interim years.	Physical property held for investment purposes.
Property trusts	20	Property trusts held by the University are quoted on the Australian Stock Exchange and are valued at the last sale price.	Listed property trusts have underlying assets comprising physical properties and cash balances. Distributions are received in cash.
Shares in listed companies	20	These shares are carried at their quoted last sale price. Movements in these values between reporting dates are accounted for in accordance with the provisions of AASB 1041 "Revaluation of Non-Current Assets". Dividend income is recognised when dividends are declared.	A mixture of ordinary and preference shares are held.
Floating rate notes (FRNs)	20	Carried at face value plus accrued interest from last coupon payment date.	Income quarterly. Coupon set quarterly at a premium to 90 day Bank Bill Swap Reference Rate. Fixed term. Investment is restricted to FRNs issued by authorised banks or companies with A+ credit ratings.
Loans receivable	19	Third party loans are carried at nominal amounts.	Repayment of principal and interest on loans have varying terms and conditions.
Financial liabilities		Financial liabilities are recognised when a present obligation to another party is entered into and the amount of the liability can be reliably measured.	
Trade creditors	27	Creditors and accruals are recognised at their nominal amounts, being the amounts at which the liabilities will be settled. Liabilities are recognised to the extent that the goods or services have been received (and irrespective of having been invoiced).	Settlement is usually made net 30 days.
Loans Payable	25	Loans payable are recognised at their nominal amounts, being the amounts at which the liabilities will be settled.	Repayments are quarterly, based upon the indexed annuity bond repayment schedule applicable as and when the repayments fall due.

THE AUSTRALIAN NATIONAL UNIVERSITY

NOTES continued

29.2 INTEREST, CURRENCY, MARKET, CASH FLOW AND CREDIT RISK

2004	Less than 1 year \$'000	Between 1 and 5 years \$'000	Greater than 5 years \$'000	Total carrying amount \$'000	Fair Value \$'000	Weighted average interest rate %
FINANCIAL ASSETS						
<i>Interest Rate Risk</i>						
Corporate bonds	19,281	82,887	10,200	112,368	112,368	6.61
Debentures	5,000	-	-	5,000	5,000	5.68
Government and semi-government bonds	302	11,805	5,009	17,116	17,116	7.21
Capital Indexed Bonds	-	4,802	-	4,802	4,802	4.00
Transferable certificates of deposit	21,589	2,000	-	23,589	23,589	5.69
<i>Currency Risk</i>						
Overseas managed investment funds	-	-	31,857	31,857	31,857	n/a
<i>Market Risk</i>						
Convertible notes	-	-	4,558	4,558	4,558	5.25
Managed investment funds	-	-	38,104	38,104	38,104	n/a
Properties	-	-	18,300	18,300	18,300	n/a
Property trusts	-	-	25,583	25,583	25,583	n/a
Shares and share options	-	-	291,259	291,259	291,259	n/a
<i>Cash Flow Risk</i>						
Cash	134,762	-	-	134,762	134,762	5.47
Floating rate notes	15,063	110,012	39,075	164,150	164,150	6.07
<i>Credit Risk</i>						
Receivables	35,485	-	-	35,485	35,485	n/a
Loans Receivable	207	5,576	840	6,623	6,623	1.37
Total Financial Assets	231,689	217,082	464,785	913,556	913,556	
FINANCIAL LIABILITIES						
<i>Credit Risk</i>						
Trade creditors	23,407	-	-	23,407	23,407	n/a
Loans Payable	289	3,241	111,192	114,722	114,722	4.91
Total Financial Liabilities	23,696	3,241	111,192	138,129	138,129	

The information provided has been prepared for consolidated activity only.

Interest rate risk is the risk that the realisable value of a financial instrument will fluctuate due to changes in market interest rates.

Currency risk is the risk that the value of a financial instrument will fluctuate due to changes in foreign exchange rates.

Market risk is the risk that the value of a financial instrument will fluctuate as a result of changes in market prices.

Cash flow risk is the risk that realisable future cash flows associated with a monetary financial instrument will fluctuate in amount.

Credit risk is the risk that one party to a financial instrument will fail to discharge an obligation and cause the other party to incur a financial loss.

The University's maximum exposure to credit risk at 31 December 2004 in relation to each class of recognised financial assets is the carrying amount of those assets as indicated in the Statements of Financial Position. The University has no significant exposure to any concentration of credit risk. All figures for credit risk referred to do not take into account the value of any collateral or other security.

THE AUSTRALIAN NATIONAL UNIVERSITY

NOTES continued

29.3 INTEREST, CURRENCY, MARKET, CASH FLOW AND CREDIT RISK

2003	Less than 1 year \$'000	Between 1 and 5 years \$'000	Greater than 5 years \$'000	Total carrying amount \$'000	Fair Value \$'000	Weighted average interest rate %
FINANCIAL ASSETS						
<i>Interest Rate Risk</i>						
Corporate bonds	12,123	115,121	4,704	131,948	131,948	6.75
Debentures	5,000	-	-	5,000	5,000	5.02
Government and semi-government bonds	-	21,858	24,364	46,222	46,222	5.66
Transferable certificates of deposit	9,925	4,043	-	13,968	13,968	5.26
<i>Currency Risk</i>						
Overseas managed investment funds	-	-	28,144	28,144	28,144	n/a
<i>Market Risk</i>						
Convertible notes	-	-	2,050	2,050	2,050	4.40
Managed investment funds	-	-	35,028	35,028	35,028	n/a
Properties	-	-	21,000	21,000	21,000	n/a
Property trusts	-	-	17,813	17,813	17,813	n/a
Shares and share options	-	-	241,621	241,621	241,621	n/a
<i>Cash Flow Risk</i>						
Cash	117,877	-	-	117,877	117,877	5.46
Floating rate notes	11,600	51,441	1,000	64,041	64,041	5.94
Other	-	605	-	605	605	n/a
<i>Credit Risk</i>						
Receivables	46,666	-	-	46,666	46,666	n/a
Loans Receivable	-	5,695	-	5,695	5,695	0.99
Total Financial Assets	203,191	198,763	375,724	777,678	777,678	
FINANCIAL LIABILITIES						
<i>Credit Risk</i>						
Trade creditors	20,749	-	-	20,749	20,749	n/a
Total Financial Liabilities	20,749	-	-	20,749	20,749	

The information provided has been prepared for consolidated activity only.

Interest rate risk is the risk that the realisable value of a financial instrument will fluctuate due to changes in market interest rates.

Currency risk is the risk that the value of a financial instrument will fluctuate due to changes in foreign exchange rates.

Market risk is the risk that the value of a financial instrument will fluctuate as a result of changes in market prices.

Cash flow risk is the risk that realisable future cash flows associated with a monetary financial instrument will fluctuate in amount.

Credit risk is the risk that one party to a financial instrument will fail to discharge an obligation and cause the other party to incur a financial loss.

The University's maximum exposure to credit risk at 31 December 2003 in relation to each class of recognised financial assets is the carrying amount of those assets as indicated in the Statements of Financial Position. The University has no significant exposure to any concentration of credit risk. All figures for credit risk referred to do not take into account the value of any collateral or other security.

THE AUSTRALIAN NATIONAL UNIVERSITY

NOTES continued

	Consolidated		University	
	2004 \$'000	2003 \$'000	2004 \$'000	2003 \$'000
30. RECONCILIATION OF OPERATING RESULT TO NET CASH FLOWS FROM OPERATIONS				
Reported net operating surplus/(deficit) from ordinary activities	50,042	(19,557)	49,726	(19,806)
Depreciation and amortisation of property, plant and equipment	39,476	36,371	39,179	36,012
Net (Gain)/Loss on disposal of assets	1,109	4,045	1,109	4,051
Provision for doubtful debts	83	134	83	134
Provision for Intellectual Property Protection	9	(4)	-	-
Unrealised (gain)/loss on investments	2,188	6,420	2,188	6,420
(Increase)/Decrease in operating assets				
Receivables	(3,475)	(4,878)	(2,907)	(6,538)
Advance payments and prepaid expenditure	(2,237)	1,060	(2,377)	1,200
Inventories	(4,116)	(4,761)	(3,984)	(4,226)
Increase/(Decrease) in operating liabilities				
Provision for employee entitlements	22,671	28,650	22,663	28,669
Employee related liabilities	3,247	(978)	3,247	(978)
Trade Creditors	5,294	8,879	5,654	9,097
Other provisions and payables	(78,078)	24,831	(76,806)	24,301
Other	-	(4,544)	-	(4,454)
Net cash flows from operating activities	<u>36,213</u>	<u>75,668</u>	<u>37,775</u>	<u>73,882</u>

31. LAND**Australian Capital Territory**

The major teaching and research facilities of the University are located on the Acton Campus site of 148 hectares and the Mt Stromlo site of 81 hectares. These sites are provided free of charge and held on lease in perpetuity. The use of this land is restricted to Australian National University activities.

The University occupies other sites of 224 hectares within the Australian Capital Territory on varying leasehold terms and conditions. The value of this land has been assessed and brought to account.

New South Wales

The University owns 148 hectares of freehold land at Coonabarabran on which is located the Siding Spring Observatory and a further 3 hectares is held by the University at Coonabarabran under permissive occupancy. The value of this land has been brought to account.

The University owns 349 hectares of freehold land at Kioloa. The value of this land has been assessed and brought to account.

Northern Territory

The University occupies 26,500 hectares near Tennant Creek held on lease in perpetuity on which is located the Warramunga Seismic Station. The value has been assessed and brought to account.

The University owns 4 hectares of freehold land at Darwin on which is located field research headquarters. The value of this land has been brought to account.

Fiji

The University occupies 1 hectare at Suva held on a 75 year lease from November 1965 which is used for field research purposes. The value of this site has not been assessed nor brought to account.

THE AUSTRALIAN NATIONAL UNIVERSITY

NOTES continued

32. REMUNERATION OF OFFICERS

	Consolidated		University	
	2004	2003	2004	2003
	\$	\$	\$	\$
Income received or due and receivable by officers ¹	10,639,633	9,483,624	10,529,547	9,247,255

1. Aggregate remuneration disclosed relates only to those officers captured within the \$10,000 bands above \$100,000. An 'officer' is defined as a person who is concerned in, or takes part in, the management of the university. The directors of entities consolidated are considered officers of the consolidated entity.

The number of officers included in these figures are shown below in the relevant income bands

	Consolidated		University	
	2004	2003	2004	2003
	Number	Number	Number	Number
\$100,000 - \$109,999	-	5	-	5
\$110,000 - \$119,999	6	6	5	6
\$120,000 - \$129,999	9	3	9	3
\$130,000 - \$139,999	7	4	7	4
\$140,000 - \$149,999	4	9	4	9
\$150,000 - \$159,999	7	3	7	3
\$160,000 - \$169,999	5	4	5	4
\$170,000 - \$179,999	3	4	3	4
\$180,000 - \$189,999	4	2	4	2
\$190,000 - \$199,999	4	2	4	2
\$200,000 - \$209,999	2	3	2	3
\$210,000 - \$219,999	1	3	1	3
\$220,000 - \$229,999	2	3	2	2
\$230,000 - \$239,999	5	-	5	-
\$250,000 - \$259,999	-	1	-	1
\$260,000 - \$269,999	-	3	-	3
\$270,000 - \$279,999	2	-	2	-
\$520,000 - \$529,999	1	1	1	1
	62	56	61	55

The aggregate amount of separation and redundancy payments during the year to officers was nil.

Fees are not payable to members of Council with the exception of one Director who receives remuneration as Director of ANU Enterprises P/L (\$12,000) and Board Chairman of Australia Scientific Instruments P/L (\$15,000). Employees of the University who are members of Council do not receive remuneration for Council service other than their salaries.

Members of Council during the year were:

The Hon Emeritus Professor P E Baume AO
 Professor I W Chubb AO
 The Hon Justice A C Bennett AO
 Ms IR Atlas (from 1 July 2004)
 Mr M Delaney
 Dr VWJ Fitzgerald (from 1 July 2004)
 Mr J F Muir AO
 Ms R Hughes AO (from July 2004)
 Ms MD Letts (from 1 July 2004)
 Professor L Cram (to 30 June 2004)
 Professor M Gillies (to 30 June 2004)
 Dr M S Keating AC (to 30 June 2004)
 Mr I F Grigg AM (to 30 June 2004)
 Ms G Carnegie (to 30 June 2004)

Senator B Mason (to 30 June 2004)
 Senator K Carr (to 30 June 2004)
 Ms B Arndt (to 30 June 2004)
 Dr P McCullagh (to 30 June 2004)
 Ms T Kyrianiou (to 30 June 2004)
 Professor D J Evans (to 29 September 2004)
 Professor M Coper (from 30 September 2004)
 Dr I Morgan
 Dr A Hyslop
 Ms K Hill
 Mr J Swanson (to 30 November 2004)
 Mr J Sass (from 1 December 2004)
 Mr M Jegenathan (to 30 November 2004)
 Ms A Rao (from 1 December 2004)

THE AUSTRALIAN NATIONAL UNIVERSITY

NOTES continued

33. REMUNERATION OF AUDITORS

	Consolidated		University	
	2004	2003	2004	2003
	\$	\$	\$	\$
Remuneration to the Auditor-General for auditing the financial statements for the reporting period ¹	223,000	204,000	182,000	169,000
Total remuneration paid to the Auditor-General	223,000	204,000	182,000	169,000

1. Amounts shown exclude GST paid on these services.

No other services were provided by the Auditor-General during the reporting period.

34. NUMBER OF EMPLOYEES

The number of employees at the end of the reporting period was 3,831 for University (2003 3,704) and 3,892 for the consolidated entity (2003 3,771).

35. SUPERANNUATION COMMITMENTS

35.1 Commonwealth Superannuation Account

Since 1949, the University has maintained an account, on conditions approved by the Treasurer of the Commonwealth, to meet the emerging costs of the employer's liability to the Commonwealth Superannuation Scheme. The Commonwealth Government has now closed this Scheme.

Transfers are made to the account each fortnight in accordance with a predetermined formula approved by Council and based on advice from the Commonwealth Actuary. The University's contribution rate in 2004 was 14 per cent of eligible employee superannuable salaries (equivalent to the contribution rate the University is required to make for all employees who are members of UniSuper, formerly known as the Superannuation Scheme for Australian Universities). The University's 2004 contribution was \$2,170,812 (2003 \$2,252,209). Pensions are met on an emerging cost basis and paid to the Commonwealth Superannuation Administration. Pension payments amounted to \$18,198,015 for 2004 (2003 \$18,133,904).

The estimated liability as at 31 December 2004 as provided by the Commonwealth Actuary is \$414,900,000 (2003 \$402,700,000). The next actuarial assessment is due to be undertaken as at 30 June 2005.

The financial transactions and balances of the Commonwealth Superannuation Account have been included with the accounts of the University.

35.2 Superannuation Scheme for Australian Universities

New continuing staff members employed by the University since 1 April 1983 have been required to join the Superannuation Scheme for Australian Universities (SSAU) until 30 September 2000. From 1 October 2000, SSAU and the Tertiary Education Superannuation Scheme merged to become a single scheme, UniSuper. This merged scheme continues to have a defined benefits component which is managed independently of the University. The University contributes to the Scheme at the rate equivalent to 14 per cent of members' salaries. The University's contributions in 2004 were \$43,520,003 (2003 \$39,627,405).

UniSuper has advised that as at 30 June 2004, the amount of UniSuper vested benefits applicable to the University was \$278,076,168 (2003 \$247,086,518) and accrued benefits applicable to the University was \$239,206,847 (2003 \$204,460,324). The estimated market value of assets of UniSuper for current members at 30 June 2004 available to pay UniSuper superannuation liabilities of the University was \$269,235,978 (2003 \$206,460,324). Thus the difference between the estimated net market value of UniSuper assets and accrued benefits at 30 June 2004 apportioned to the current members of the University is a surplus of \$30,029,130 (2003 \$11,266,813). Note that values assigned to accrued benefits in this note are based on calculations arising from a change in accounting policy by the Trustees.

THE AUSTRALIAN NATIONAL UNIVERSITY

NOTES continued

35.3 Public Sector Superannuation Scheme

The University has a small number of employees who are members of the Public Sector Superannuation Scheme to which the University contributes at the rate of 9.7 per cent of members salaries. During 2004, the University's contributions amounted to \$118,935 (2003 \$100,585). This scheme is closed to new members of the University's staff.

35.4 Employee Non Contributory Productivity Superannuation Schemes

The University's contributions for employees who are contributors to the Commonwealth Superannuation and Public Sector Superannuation Schemes are paid to the Commonwealth Superannuation Administration. The University contributes to the Schemes between 2 to 3 per cent of members' salaries. During 2004, the University's contributions were \$368,355 (2003 \$388,088) and \$32,370 (2003 \$29,266) respectively.

The University paid contributions for eligible employees, other than employees who are contributors to the Commonwealth Superannuation and Public Sector Superannuation Schemes, to the Tertiary Education Superannuation Scheme until 30 September 2000, and since then to the newly established UniSuper. The new scheme continues to offer a cash accumulation component. The University contributes to the Scheme at a rate of 3 per cent of members' salaries for full-time University employees. The University's contributions in 2004 were \$12,535,751 (2003 \$11,007,670).

36. COOPERATIVE RESEARCH CENTRES

The University received Commonwealth Funding under the Cooperative Research Centres Program for the establishment of the following Cooperative Research Centres:

Australian Photonics - an unincorporated collaborative venture established in 1992. The current partners include the University, The University of Melbourne, The University of New South Wales, The University of Sydney, RMIT University, TAFE NSW, DSTO and 20 industry partners. The Centre's area of research, development and commercialisation is telecommunications - new and improved hardware components to facilitate more efficient and effective telecommunications services. The objectives of the CRC include to be a centre of excellence in photonics with internationally recognised, commercially relevant research programs; to improve the international competitiveness of Australian industry through transfer of photonic technology; and to provide industry with knowledge and skills in photonics through educational programs with emphasis on high quality postgraduate training. The University's contribution (representing 13.47 per cent of the total of the partners' contributions) in the form of staff and equipment resources and cash from 1992 has an approximate value of \$10,482,000. The Centre is administered by Australian Photonics Pty Ltd.

Biological Control of Pest Animals - a cooperative research centre which began operations on 1 July 1999 that will continue through to June 2006. The Centre's core participants are CSIRO, the University, Agricultural Protection Board, Western Australia, the Department of Conservation and Land Management, Western Australia, the University of Adelaide, the University of Western Australia and the University of Sydney. The Centre is developing biological control agents that will reduce the birth rate of feral pests. The University's in kind contribution (representing 15 per cent of the total partners' contributions) will be \$5,625,000 over the life of the Centre. The Centre Agent is CSIRO.

Landscape Evolution and Mineral Exploration - a cooperative research centre established in 1995 with the core participants being the CSIRO, the University, the Australian Geological Survey Organisation, and the University of Canberra. The Centre is developing a framework to increase the understanding of the evolution of the Australian Landscape to improve the ability to recognise major new mineral deposits. The Centre's agreement was renewed for seven years from 1 July 2001. The University's in-kind contribution (representing 8.2 per cent of the total of the partners' contributions) will be \$11,416,000 over seven years from 2001. The Centre is administered by the CSIRO.

Greenhouse Accounting - a cooperative research centre with the core participants being the Australian Greenhouse Office, the University, the Bureau of Rural Sciences, the CSIRO, the Department of Conservation and Land Management (WA), the Departments of Natural Resources and Primary Industries (QLD) and State Forests (NSW). The Centre is developing methods of accounting for carbon emissions and sinks in Australian landscapes and for reducing greenhouse gases through responsible management of Australian ecosystems. The University's in kind contribution (representing 45 per cent of the total of the partners' contributions) will be \$23,878,000 over seven years from 1999. The University acts as the Centre Agent.

THE AUSTRALIAN NATIONAL UNIVERSITY

NOTES continued

36. COOPERATIVE RESEARCH CENTRES continued

Tropical Plant Protection - a cooperative research centre with the core participants being the University, the Bureau of Sugar Experiment Stations, CSIRO, the Departments of Agriculture, Fisheries and Forestry (Australian Quarantine Inspection Service and the National Office of Animal and Plant Health), Primary Industries (QLD), Primary Industries and Fisheries (NT), the Northern Territory University, RhoBio, the University of Queensland. The centre's objective includes establishing programs for improved plant disease and pest management, with major emphasis on improved disease and pest prevention strategies and the increased utilisation of plant resistance to diseases and pests. The University's in kind contribution (representing 2.13 per cent of the total of core participants' contributions) will be \$1,092,000 over seven years from 1999. The University of Queensland acts as the Centre Agent.

Innovative Dairy Products - a cooperative research centre with the core partners being Monash University, CSIRO, Genetics Australia Co-operative Limited, the University of Sydney, Dairy Research and Development Corporation, Australian Dairy Farmers Federation and Bonlac Foods Limited. The mission of the centre is to develop and commercialise new genomic technologies and products to underpin a highly innovative, progressive and internationally competitive Australian Dairy industry. As an associate partner, the University's in kind contribution (representing two per cent of the total of core and supporting participants' contributions) will be \$1,112,000 over seven years from July 2001. The agreement provides for the establishment of a propriety limited company for management purposes.

Functional Communication Surfaces - a cooperative research centre with the core partners being the University, Monash University, CSIRO, Amcor Packaging (Australia) Pty Ltd, Carter Holt Harvey Tissues Pty Ltd, Norske Skog Paper Mills (Australia) Ltd, Note Printing Australia Ltd and PaperlinX Ltd. The mission of the centre is to establish a self-funding R&D capability able to fully leverage the market opportunities offered by the rapidly expanding requirements for "smart" print surfaces. The University's in kind contribution (representing 17.1 per cent of the total of core partners' contributions) will be \$5,999,000 over seven years from July 2001. Monash University acts as the Centre Agent.

Smart Internet Technology - a cooperative research centre with the core partners including the University, Adacel, Hewlett Packard, Motorola, NSW GTA, Telstra, the Universities of New South Wales, Sydney and Wollongong. The centre combines research in artificial intelligence, social interaction and network development to create enabling technologies for smart Internet applications that will allow users and network providers to manage this complexity. The University's in kind contribution (representing 9.5 per cent of the total of core partners' contributions) will be \$4,200,000 over seven years from July 2001. The centre will operate as an incorporated management company (CRCSIT Pty Limited).

Sustainable Production Forestry - a cooperative research centre with the core participants University of Tasmania, CSIRO, Southern Cross University, Griffith University, University of Queensland, and 10 industry partners. The Centre is to undertake high quality research that contributes to national forestry objectives including economic and social development. It also aims to ensure that Australian industry captures the benefits of research by active involvement in the Centre. The University's in kind contribution (representing 14.4 per cent of the total of the core participants' contributions) will be \$1,231,000 over seven years from July 1997. The Centre agent is University of Tasmania.

Costs for all Cooperative Research Centres are expensed as incurred except where future benefits are expected beyond reasonable doubt to exceed these costs. In 2004 all costs were expensed.

37. RELATED PARTY DISCLOSURES

The University enters into a number of transactions for the provision of goods and services under normal commercial terms and conditions with student organisations based on campus.

38. CONTINGENT ASSET

The University lost significant assets at the Research School of Astronomy and Astrophysics, Mt Stromlo Observatory as a result of the Canberra firestorms on 18 January 2003. The University insurers have failed to provide adequate compensation to date and as a result the University has issued writs against the insurance companies involved. The final outcome of these actions cannot be reliably measured at this time.

THE AUSTRALIAN NATIONAL UNIVERSITY

NOTES continued

39. CONTINGENT LIABILITIES

Guarantees of \$25,026 have been given to The Credit Union of Canberra Ltd for loans made to needy students. Guarantees of \$1,859 have been given to the National Australia Bank for the balances of loans provided pursuant to the Legal Workshop Loan Scheme. Guarantees of \$28,602 have been given various property lessors in respect of ANU student tenancy agreements for 2004 student accommodation.

The University is currently involved in a number of legal matters. The liability of the University in respect of these matters cannot be reliably estimated at this time.

ANU Enterprise Pty Limited is involved in a legal action arising in 1994, which was within ANU Enterprise Pty Limited's normal course of business. ANU Enterprise Pty Limited's professional indemnity insurers have denied liability in respect of the transaction. The amount of liability that may become payable cannot be reliably calculated and the action continues to remain dormant. ANU Enterprise Pty Limited's legal advisors have confirmed that based on the number of years that the proceedings have lain dormant, the risk can be safely removed as a contingent liability from the Company's accounts.

40. SEGMENT INFORMATION

The Economic Entity operates predominantly in the Australian Capital Territory for the purpose of teaching and research.

41. ECONOMIC DEPENDENCY

The University is to a significant extent dependant on monies received pursuant to the Higher Education Funding Act 1988 to fund its operations. In 2004, funding from the Act (\$335,679,000) represented 51.5 per cent (2003 \$283,999,000 54 per cent) of the total operating revenues.

42. SPECIAL ACCOUNTS

a) The University has established 'The Australian National University ADS Students Third Party Payments ADS Special Account'. The Accounts holds funds used to meet costs for students sponsored by Ausaid. The monies are placed in a special bank account and expended on Student stipends in accordance with the terms of the Ausaid agreement. The monies are not available for other purposes of the University and are not recognised in the financial statements.

	University	
	2004	2003
	\$'000	\$'000
Balance carried forward from previous year	230	122
Receipts during the year	5,138	7,110
Interest received	45	66
Available for payments	5,413	7,298
Payments made	(5,409)	(7,068)
Balance carried forward to next year	4	230

b) The University processes Comcare receipts and payments through a distinct location and account code combination in the ledger. The monies are not available for other purposes of the University and are not recognised in the financial statements.

	University	
	2004	2003
	\$'000	\$'000
Balance carried forward from previous year		
Receipts during the year	495	260
Available for payments	495	260
Payments made	(495)	(260)
Balance carried forward to next year	-	-

THE AUSTRALIAN NATIONAL UNIVERSITY

NOTES continued

43. JOINT VENTURES

The Australian National University has entered into a joint venture operation called the Arafura Timor Research Facility (ATRF), a major national research facility, whose principal function is to support the conduct of world-class research into marine and coastal ecosystems of the Arafura Timor region, including living and non-living resources, and into the effective use of those resources through science, technology, policy and industry. The purpose of the facility is to facilitate research directed at the growth and regional capacity of commercial enterprises, to assist the economic development and resource security of the littoral states of the regional seas.

The Australian National University has a 50% participating interest in this joint venture and is entitled to 50% of its output. The Australian National University's interests in the assets employed in the joint venture are included in the consolidated statement of financial position for 2004 only, in accordance with the accounting policy described in Note 1.17, from its inception to 31 December 2004, under the following classifications:

	Consolidated		University	
	2004 \$'000	2003 \$'000	2004 \$'000	2003 \$'000
Share of ATRF Assets and Liabilities				
Current Assets				
Cash	406	-	406	-
Total Current Assets	406	-	406	-
Non-Current Assets				
Work in Progress - Building	3,222	-	3,222	-
Plant, Equipment and Motor Vehicles - at cost	29	-	29	-
Less: Accumulated depreciation	(4)	-	(4)	-
	25	-	25	-
Total Non Current Assets	3,247	-	3,247	-
Total Assets	3,653	-	3,653	-
Current Liabilities				
Other Payables	1,827	-	1,827	-
Total Current Liabilities	1,827	-	1,827	-
Total Liabilities	1,827	-	1,827	-
Share of assets employed in joint venture	1,826	-	1,826	-
Share of ATRF Revenues, Expenses and Results				
Revenues	2,281	-	2,281	-
Expenses	(454)	-	(454)	-
Surplus from ordinary activities	1,827	-	1,827	-

Note 44. Acquitment of Commonwealth Government financial assistance

44.1 DEST - Teaching and Learning

Notes	Operating Grant *		Capital Development				Total
	2004	2003	2004	2003	2004	2003	
	\$'000	\$'000	\$'000	\$'000	\$'000	\$'000	\$'000
Financial assistance received in CASH during the reporting period (total cash received from the Commonwealth for the Programmes)	168,094	185,861	-	7,300	168,094	183,161	
Net accrual adjustments	15,001	1,401	-	-	15,001	1,401	
Revenue for the Period	183,095	187,262	-	7,300	183,095	184,562	
Surplus / (deficit) from the previous year	-	-	-	-	-	-	
Total Revenue including accrued revenue	183,095	187,262	-	7,300	183,095	184,562	
Less Expenses including accrued expenses	(183,061)	(187,262)	-	(7,300)	(183,061)	(194,562)	
Surplus / (deficit) for reporting period	34	-	-	-	34	-	

* Including Workplace Reform Programme funds, Marginal Funding Estimates, Other HEIP programs, Innovation Program and Equity Program

44.2 HECS and other Commonwealth Loan

Notes	HECS (Commonwealth payments only)		PELS		BOTPLS		Total
	2004	2003	2004	2003	2004	2003	
	\$'000	\$'000	\$'000	\$'000	\$'000	\$'000	\$'000
Financial assistance received in CASH during the reporting period (total cash received from the Commonwealth for the Programmes)	26,123	20,342	5,029	3,407	5	-	31,157
Net accrual adjustments	1,894	(423)	(662)	304	-	-	1,232
Revenue for the Period	28,017	19,919	4,367	3,711	5	-	32,389
Surplus / (deficit) from the previous year	-	-	-	-	-	-	-
Total Revenue including accrued revenue	28,017	19,919	4,367	3,711	5	-	32,389
Less Expenses including accrued expenses	(28,017)	(19,919)	(4,367)	(3,711)	(5)	-	(32,389)
Surplus / (deficit) for reporting period	-	-	-	-	-	-	-

44.3 Scholarships

Notes	Australian Postgraduate Awards Pre-2002		Australian Postgraduate Awards Post-2002		International Postgraduate Research Scholarships		Commonwealth Education Costs Scholarships		Commonwealth Accommodation Scholarships		Total	
	2004 \$'000	2003 \$'000	2004 \$'000	2003 \$'000	2004 \$'000	2003 \$'000	2004 \$'000	2003 \$'000	2004 \$'000	2003 \$'000	2004 \$'000	2003 \$'000
Financial assistance received in CASH during the reporting period (total cash received from the Commonwealth for the Programmes)	644	2,094	3,998	2,628	1,079	-	52	-	152	-	5,925	4,722
Net accrual adjustments	-	(104)	-	-	-	1,282	-	-	-	-	-	1,178
Revenue for the Period	644	1,990	3,998	2,628	1,079	1,282	52	-	152	-	5,925	5,900
2(c)												
Surplus / (deficit) from the previous year	(166)	-	166	-	-	-	-	-	-	-	-	-
Total Revenue including accrued revenue	478	1,990	4,164	2,628	1,079	1,282	52	-	152	-	5,925	5,900
Less Expenses including accrued expenses	(1,134)	(2,156)	(4,026)	(2,462)	(857)	(1,282)	(50)	-	(152)	-	(6,219)	(5,900)
Surplus / (deficit) for reporting period	(656)	(166)	138	166	222	-	2	-	-	-	(294)	-

44.4 DEST Research

Notes	Institutional Grants Scheme		Research Training Scheme		Systemic Infrastructure Initiative		Research Infrastructure Block Grants		Total	
	2004 \$'000	2003 \$'000	2004 \$'000	2003 \$'000	2004 \$'000	2003 \$'000	2004 \$'000	2003 \$'000	2004 \$'000	2003 \$'000
Financial assistance received in CASH during the reporting period (total cash received from the Commonwealth for the Programmes)	14,692	16,553	22,088	22,480	18,030	23,314	9,754	8,745	64,564	71,092
Net accrual adjustments	1,617	(194)	1,921	(136)	15,167	(15,026)	849	(163)	19,554	(15,519)
Revenue for the Period	16,309	16,359	24,009	22,344	33,197	8,288	10,603	8,582	84,118	55,573
2(d)										
Surplus / (deficit) from the previous year	-	-	-	-	-	-	-	-	-	-
Total Revenue including accrued revenue	16,309	16,359	24,009	22,344	33,197	8,288	10,603	8,582	84,118	55,573
Less Expenses including accrued expenses	(16,309)	(16,359)	(24,009)	(22,344)	(22,464)	(8,288)	(10,603)	(8,582)	(73,385)	(55,573)
Surplus / (deficit) for reporting period	-	-	-	-	10,733	-	-	-	10,733	-

THE AUSTRALIAN NATIONAL UNIVERSITY

44.5 Australian Research Council
(a) Discovery

Notes	Projects		Fellowships		Federation Fellowships		Indigenous Research Development		Total	
	2004 \$'000	2003 \$'000	2004 \$'000	2003 \$'000	2004 \$'000	2003 \$'000	2004 \$'000	2003 \$'000	2004 \$'000	2003 \$'000
	28,458	19,330	1,771	3,070	3,680	2,530	(4)	(6)	33,905	24,924
	9,593	(4,572)	1,335	136	1,122	(335)	4	28	12,054	(4,743)
2(e)(i)	38,051	14,758	3,106	3,206	4,802	2,195	-	22	45,959	20,181
	-	-	-	-	-	-	-	-	-	-
	38,051	14,758	3,106	3,206	4,802	2,195	-	22	45,959	20,181
	(24,894)	(14,758)	(2,568)	(3,206)	(2,953)	(2,195)	-	(22)	(30,415)	(20,181)
	13,157	-	538	-	1,849	-	-	-	15,544	-

Financial assistance received in CASH during the reporting period (total cash received from the Commonwealth for the Programmes)
Net accrual adjustments
Revenue for the Period
Surplus / (deficit) from the previous year
Total Revenue including accrued revenue
Less Expenses including accrued expenses
Surplus / (deficit) for reporting period

44.5 Australian Research Council
(b) Linkages

Notes	Special Research Initiatives		Infrastructure		International Researcher Exchange		Projects		Research Networks		Centres		Total	
	2004 \$'000	2003 \$'000	2004 \$'000	2003 \$'000	2004 \$'000	2003 \$'000	2004 \$'000	2003 \$'000	2004 \$'000	2003 \$'000	2004 \$'000	2003 \$'000	2004 \$'000	2003 \$'000
	(17)	389	1,930	102	475	148	5,605	3,355	640	-	4,229	3,667	12,862	7,661
	330	(319)	551	1,813	54	11	1,493	(471)	-	-	1,292	(913)	3,720	121
2(e)(ii)	313	70	2,481	1,915	529	159	7,098	2,884	640	-	5,521	2,754	16,582	7,782
	-	-	-	-	-	-	-	-	-	-	-	-	-	-
	313	70	2,481	1,915	529	159	7,098	2,884	640	-	5,521	2,754	16,582	7,782
	(296)	(70)	(1,328)	(1,915)	(316)	(159)	(3,049)	(2,884)	(1)	-	(4,605)	(2,754)	(9,595)	(7,782)
	17	-	1,153	-	213	-	4,049	-	639	-	916	-	6,987	-

Financial assistance received in CASH during the reporting period (total cash received from the Commonwealth for the Programmes)
Net accrual adjustments
Revenue for the Period
Surplus / (deficit) from the previous year
Total Revenue including accrued revenue
Less Expenses including accrued expenses
Surplus / (deficit) for reporting period

Risk Management Implementation

The Australian National University (ANU) is a dynamic organisation with a strong international reputation in research and teaching as confirmed by recent quality audits. The protection of this reputation and of the University's operations and resources is a fundamental element in the medium-long term business strategy. Therefore, it is essential that the ANU has a high quality risk management framework to ensure risks are identified and appropriately managed to ensure the further development and protection of this hard earned reputation.

In November 2004, a Risk Management Coordination Office was established now known as the Risk Management and Audit Office (RMAO). The RMAO operates at the centre of a proposed risk management framework as a small coordinating unit

Through broad consultation the role and responsibilities of the RMAO include:

- Coordination of the ANU wide risk management framework;
- Facilitate the development, ratification and adoption of an ANU risk management policy and implementation plan;
- Development and implementation of a risk management plan in consultation with the University Executive;
- Link the University's policy and delegations framework with the risk management framework;
- Assist in the development and application of risk management procedures across the university;
- Coordinate, monitor and report on progress in managing business/operational, enterprise-wide and specialist risks across the ANU;
- Report on progress of managing strategic risks to the Executive through the Executive Director Administration (or equivalent) and the Risk Management Committee;
- Provide advice to the relevant Deans/Directors on risk management issues affecting their area;
- Provide risk management reports to the Internal Audit Committee to inform the internal audit program as approved by Council;
- Implement campus wide risk management training;
- Raise the profile of risk management within the University and ensure a culture of risk management is developed.

The new ANU Audit Committee of Council that took office at the beginning of 2004 has adopted a risk monitoring approach to Audit planning. The Audit Committee anticipates in 2005 the availability of a University-wide risk profile that will inform the committee of the key risk exposures for the ANU in turn allowing better decision-making in relation to prescribed areas of audit focus for the ensuing year(s). The 2005 Audit Plan reflects this risk management approach.

ANU Annual Report into Occupational Health & Safety, 2004

This is a report into occupational health and safety matters of The Australian National University under the requirements of section 74 of the Occupational Health and Safety (Commonwealth Employment) Act 1991.

The University's Occupational Health and Safety Policy [1] was updated in March 2003. Additionally, schedule 6 of the ANU Enterprise Agreement 2003-2006 [2], contains the Occupational Health and Safety Agreement.

The 38 Designated Work Group OHS Committees [3] are generally aligned with the research, teaching and administrative areas of the University. There are however only a fraction of Health and Safety Representatives [4] in these DWGs, but a strong OHS committee membership [5].

During 2004, the OHS culture and function within the University were strengthened by:

1. 72 training courses, increasing the knowledge of 894 staff and students in hazard awareness and risk management principles and safe work processes and practices,
2. New, updated or draft OHS related Policies on –
 - i) Legal Liability (updated)

In addition, to the 50 existing ANU Hazard Management Procedures, the following has occurred:

- a) New, updated or draft Hazard Management Procedures covering –
 - i) Electrical safety (updated)
 - ii) OHS requirements for manufacturers and suppliers of plant and substances,
- b) Audit and self assessment activities related to –
 - i) OHS management system compliance (trial)
 - ii) High pressure systems
 - iii) Pressure vessels
 - iv) Chemicals

Arising from the conduct of undertakings of the University (ie excluding commuting and sporting), the following incidents were reported to Comcare –

- 0 Deaths
- 44 Serious Personal Injuries
- 30 Dangerous Occurrences

with appropriate corrective action having been taken or currently underway.

During 2004, Comcare conducted 2 investigations/audits into –

- i) Llewellyn Hall's acoustic baffles
- ii) Compliance with Plant/Equipment regulations

Comcare in carrying out its role as regulator issued the following notices –

- 0 Do not disturb notices, under section 45 of the Act,
- 0 Prohibition notices, under section 46 of the Act,
- 1 Provisional improvement notice, under section 47 of the Act, related to Llewellyn Hall

In general, The Australian National University endeavours to maintain a workplace that is, as far as reasonably practicable: safe and healthy for staff, students, and visitors, considering the complexities and range of hazards and risks undertaken in its research and teaching activities and supporting functions.

[1] Occupational Health and Safety Policy, http://info.anu.edu.au/policies/Policies/Human_Resources/ohs/OHS_Policy.asp

[2] ANU Australian National University Enterprise Agreement 2003-2006, Schedule 6 – Occupational Health and Safety Agreement

[3] ANU Designated Work Groups, DWGs
http://info.anu.edu.au/hr/OHS/OHS_Networks/Designated_Work_Groups.asp

[4] Designated Health and Safety Representatives,
http://info.anu.edu.au/hr/OHS/OHS_Networks/Health_and_Safety_Representatives.asp

[5] OHS Committee membership, http://info.anu.edu.au/hr/OHS/OHS_Networks/DWG_OHS_Committee_Members.asp

Freedom of Information Act 1982 Statement

This statement has been prepared to comply with section 8 of the Freedom of Information Act 1982 and is correct as at 31 December 2004.

1. Organisation and Functions of the University's decision-making Council and Boards are as follows:

Council

In accordance with The Australian National University Act 1991(Cth), the Council is the governing authority of the University. The Act provides that the Council has the control and management of the University and is to act in all matters concerning the University in such manner as it thinks will best promote the interests of the University. The Council may enact delegated legislation, subject to the scrutiny of the Australian Parliament, known as Statutes, Rules and Orders.

The Council is chaired by the Chancellor and comprises 15 members which include elected officers of the University and other ex-officio members, persons appointed by the Minister for Education, Science and Training, representatives of various groups of the University's academic staff, representatives of the general staff, graduate and undergraduate students.

Academic Structure of the University

The University's formal academic organisational structure consists of the Institute of Advanced Studies, The Faculties and University Schools and Centres.

The Institute of Advanced Studies comprises The John Curtin School of Medical Research and the Research Schools of Astronomy and Astrophysics, Biological Sciences, Chemistry, Earth Sciences, Pacific and Asian Studies, Physical Sciences and Engineering, and Social Sciences. It incorporates the Centre for Resource and Environmental Studies, the School of Mathematical Sciences (IAS component), the ANU Institute of Information Sciences and Engineering (IAS component) and a number of mainly multidisciplinary academic centres.

The Faculties offer undergraduate and graduate programs in arts, Asian studies, economics and commerce, engineering and information technology, law, medicine, science, art and music. The Council has also established a number of organisational structures called University Centres which include members of staff from the Institute and The Faculties, or in some other way draw their resources from the Institute and The Faculties. These Centres comprise the Asia-Pacific College of Diplomacy, Asia Pacific School of Economics and Government, Australian Primary Health Care Research Institute, Mathematical Sciences Institute, Centre for Cross Cultural Research, Humanities Research Centre,

National Centre for Epidemiology and Population Health, National Graduate School of Management, Centre for Educational Development and Academic Methods, Centre for Mental Health Research, the Centre for Aboriginal Economic Policy Research and the National Europe Centre.

The University Academic structure can be viewed at <http://pqa.anu.edu.au/plan/AcadOrg/>

Boards and Committees of the Council

Council is assisted in its functions by a number of Boards and Committees:

Academic Board

The Academic Board reports to, or advises, the Council on all aspects of the academic policy of the University, including the strategic academic direction of the University and the development of teaching, learning, scholarship, research and research training in all parts of the University.

The Board comprises the Vice-Chancellor, as Chair, the Deputy Vice-Chancellors (Education) and (Research), the Pro Vice-Chancellor, a Head of a Research School, a Dean of a Faculty and a Director of a University Centre from each of the two academic Divisions, three members of general staff, two members of the academic staff of the Institute of Advanced Studies, two members of the academic staff of The Faculties, the President of the Postgraduate and Research Students' Association Inc., and the President of The Australian National University Students' Association.

The Academic Board is assisted by the following committees:

- University Committee on Educational Policy
- University Committee on Research Policy
- University Committee on Information Strategy Policy

Finance Committee

The Finance Committee considers all matters relating to the financial affairs of the University and makes recommendations on these matters to the Council or, where the Committee holds the requisite delegations from the Council, it determines these matters on behalf of the Council. The Chair and members of the Finance Committee are appointed by the Council.

Audit Committee

The Audit Committee assists the University Council by assessing the quality of audits (both internal and external), advising on the efficiency and adequacy of University administrative, operating and accounting controls and appraises risk management planning

and implementation within the University. Audit Committee comprises 5 members, of whom at least one must be a member of Council, and a Chair who is not a member of Council.

Honorary Degrees Committee

The Honorary Degrees Committee invites persons, within the terms of the Honorary Degree Rules, to accept nomination for honorary degrees and to recommend the names of those who accept nomination to the Council for admission.

Executive Committee

The Executive Committee considers any matter relating to the University referred to it by the Council or, if Council is not sitting, transacts the business of the University except for matters solely within the competence of the Council. The Executive Committee comprises seven members of Council and is chaired by the Chancellor.

Other Committees

Other committees of Council that meet as required are the Committee on Conditions and Appointment of the Vice-Chancellor and Deputy Vice-Chancellors and the Emergency Appointment (Vice-Chancellor) Committee.

2. The functions of the University's Statutory Officers are as follows:

Chancellor

The Chancellor presides at all meetings of Council and on all ceremonial occasions when available to do so. The Chancellor and the Vice-Chancellor sign the Annual Report of the University to the Parliament.

Pro-Chancellor

In the absence of the Chancellor, the Pro-Chancellor presides at meetings of the Council and on ceremonial occasions.

Vice-Chancellor

The Vice-Chancellor is the Chief Executive Officer of the University and has the responsibility of controlling and managing the affairs and concerns of the University including the control and management of real and personal property vested in or acquired by the University. The Vice-Chancellor has, and may exercise, such powers as are necessary or desirable to discharge those duties. The Vice-Chancellor also represents and acts for the University in its relations with the Commonwealth Government and other bodies.

3. Powers of the University

The University's powers are based on The Australian National University Act 1991. Subject to the Act, the University has power to do all things that are necessary or convenient

to be done for, or in connection with, the performance of its functions. The University has made Statutes, Rules and Orders which can be viewed at www.anu.edu.au/cabs/

The only delegated legislation that affects members of the public who are not members of the University community are Statutes made concerning the management of traffic and parking on campus, which can also be found at <http://info.anu.edu.au/policies/Legislation>

4. Documents available for purchase by the public or otherwise accessible in terms of the Freedom of Information Act 1982 are:

- Council statutes, rules and orders
- Annual Report of the ANU to Parliament
- Annual reports of Schools, faculties, Centres and Units to the Council
- Undergraduate Handbook
- Graduate School Handbook
- Student Enrolment and Administrative Procedures Guide
- Purchasing Policy and Procedures (electronic version only)
- Finance and Business Manual (electronic version only)

Documents which are customarily made available to the public otherwise than under the Freedom of Information Act 1982, free of charge upon request, are the *ANU Reporter*, information pamphlets and booklets on courses and academic requirements in various disciplines, information on external scholarships, leaflets on academic appointments in the Institute of Advanced Studies and in The Faculties, Library Guides, and an accommodation brochure.

Internal working documents include internal user manuals, Financial Authorisations, Personnel and Payroll (General) Manuals and other policy and procedural documents.

5. Facilities for access

Limited facilities for the perusal of documents applicable to individual areas are available at the Human Resources Division and/or Student and Academic Services. Many documents including the University's codes, guidelines, policies and procedures are also readily available through the internet at the University website www.anu.edu.au

6. FOI procedures and initial contact points

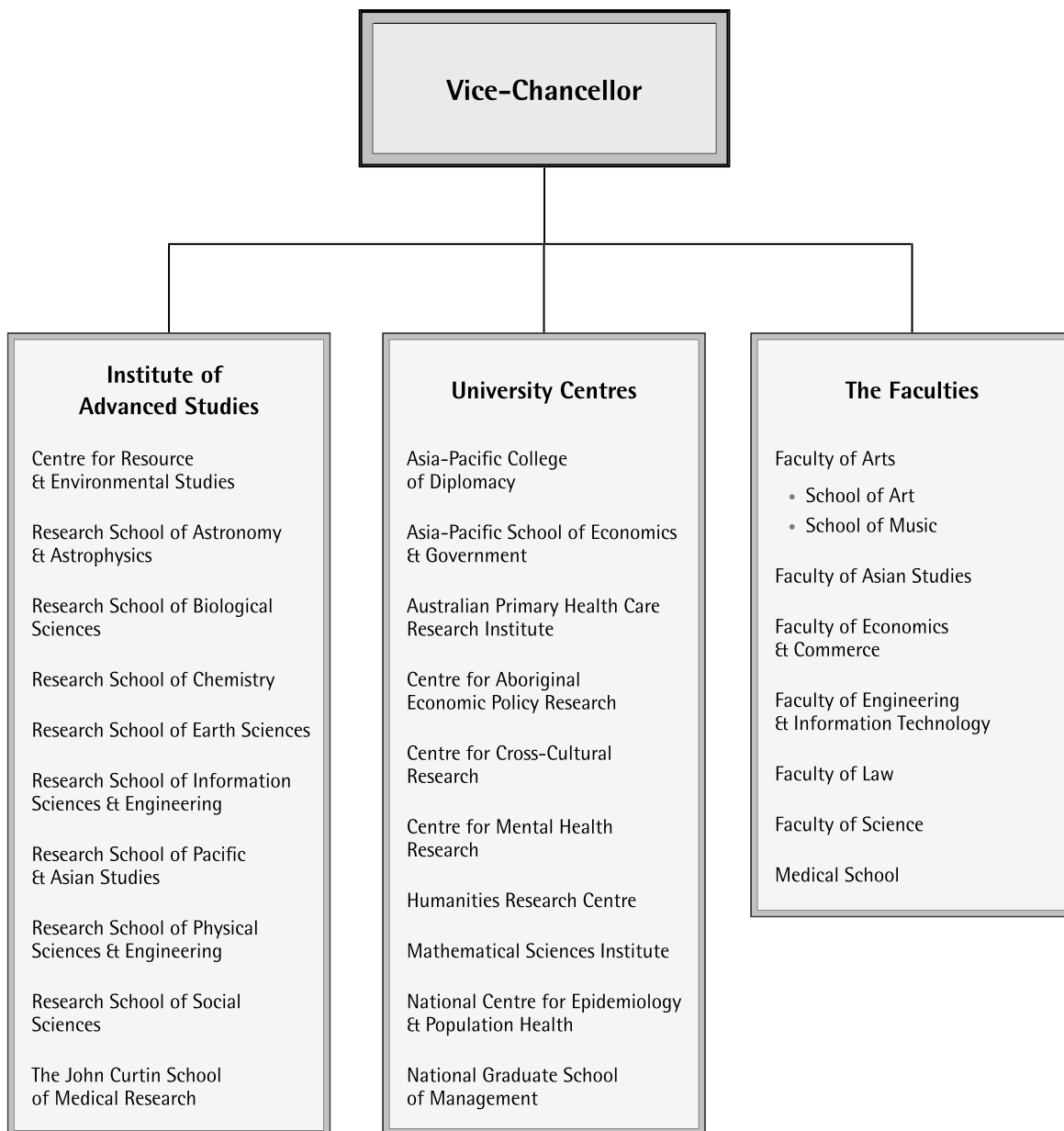
Applications for access to documents under the Freedom of Information Act 1982 (Cth) should be lodged in writing to the Manager, University Records. The written application should include details of the documents or information sought, the application fee (currently \$30.00) or a request

for its remission, an address to which notices may be sent and, to facilitate contact with the applicant, a telephone number effective during normal business hours. Lodged applications for access to documents will be acknowledged and a decision notified to the applicant as quickly as possible in accordance with the FOI Act.

Enquiries regarding freedom of information and access to documents may be made at:

University Records
Lower Ground Floor
Chancelry, Building No. 10a
The Australian National University
CANBERRA ACT 0200
T: (02) 6125 4237

Academic Structure



ANU acronyms

ACEL	Australian Centre for Environmental Law	GSSD	Graduate Studies in Strategy and Defence
ACORE	Australian Centre of Regulatory Economics	HECS	Higher Education Contribution Scheme
ACSPRI	Australian Consortium for Social and Political Research Inc.	HRC	Humanities Research Centre
ACSR	ACSPRI Centre for Social Research	IAS	Institute of Advanced Studies
AJRC	Australia Japan Research Centre	ICEAPS	International Centre of Excellence in Asia Pacific Studies
AMPL	Atomic and Molecular Physics Laboratories	IIS	Information Infrastructure Services
ANUSF	ANU Supercomputer Facility	JCSMR	The John Curtin School of Medical Research
APCD	Asia-Pacific College of Diplomacy	MAC	Marketing and Communications Division
APF	Australian Phenomics Facility	MSI	Mathematical Sciences Institute
APHCRI	Australian Primary Health Care Research Institute	NARU	North Australia Research Unit
APSEG	Asia Pacific School of Economics and Government	NCEPH	National Centre for Epidemiology and Population Health
ARC	Australian Research Council	NCIS	National Centre for Indigenous Studies
BaMBi	School of Biochemistry and Molecular Biology	NEC	National Europe Centre
BoZo	School of Botany and Zoology	NGSM	National Graduate School of Management
CABS	Council and Academic Board Secretariat	NHMRC	National Health and Medical Research Council
CAEPR	Centre for Aboriginal Economic Policy Research	OSC	Optical Sciences Group (RSPHysSE)
CAIS	Centre for Arab and Islamic Studies (The Middle East & Central Asia)	PELS	Postgraduate Education Loans Scheme
CBiS	Centre for Bioinformation Science	PRL	Plasma Research Laboratory (RSPHysSE)
CCE	Centre for Continuing Education	RegNet	Regulatory Institutions Network
CCR	Centre for Cross-Cultural Research	RFCD	Research Fields, Courses and Disciplines Classification
CEDAM	Centre for Educational Development and Academic Methods	RSAA	Research School of Astronomy and Astrophysics
CIPL	Centre for International and Public Law	RSBS	Research School of Biological Sciences
CMA	Centre for Mathematics and its Applications	RSC	Research School of Chemistry
CMHR	Centre for Mental Health Research	RSES	Research School of Earth Sciences
CNMA	Centre for New Media Arts	RSISE	Research School of Information Sciences and Engineering
CPAS	National Centre for the Public Awareness of Science	RSPAS	Research School of Pacific and Asian Studies
CRC	Cooperative Research Centre	RSPHysSE	Research School of Physical Sciences and Engineering
CRES	Centre for Resource and Environmental Studies	RSSS	Research School of Social Sciences
CSES	Centre for Sustainable Energy Systems	SA	School of Art (Faculty of Arts)
CSIT	Computer Science and Information Technology	SAS	Student and Academic Services
DOI	Division of Information	SM	School of Music (Faculty of Arts)
EcComm	Faculty of Economics and Commerce	SRES	School of Resources, Environment and Society
FACS	Flourescent Activated Cell Sorta, JCSMR		
FEIT	Faculty of Engineering and Information Technology		
GSIA	Graduate Studies in International Affairs		

www.anu.edu.au